

# Potomac Ministry Network of the AG

## 31 Day Prayer Guide



### Volume II

Dear Friends of Collegiate Student Ministry,

Greetings once again. This is volume II in a five-volume set of prayer guides targeted for the Potomac Ministry Network (PMN). The purpose of these prayer guides is simple. We want to put into as many hands as possible, tools to encourage and equip people to pray for college and universities across the PMN. It is our intention to eventually provide every Assembly of God church in the USA, district by district, the opportunity and tools to pray for college students, staff and faculty.

It is our desire to see a move of God across every campus in the USA. We need your help. Would you pray with us? We are believing for an out pouring of the Holy Spirit to grip the lives of men and women, young and old. Please believe with us as we move forward.

In this prayer guide, you will find statistics for each school, starting in Maryland and moving into Virginia. We tried to provide you with enough information to make your prayers more precise, but not over-whelming. For example, each prayer guide has information on the known Christian groups on campus. When possible, we have supplied the names of the individual students who are listed as the “first contact” of each group.

Some schools do not show student leader’s names. When that was the case, we have looked for the group’s faculty advisor. That name appears and is so marked. Often, we could not find a contact person at all. When that happened, we inserted a question mark.

Many schools have chaplains or spiritual life offices. Please pray for these men and women, that they too will be sensitive to the leading of the Holy Spirit. The Holy Spirit is not bound by denominations or back grounds. He is able to reach into the seeking heart.

Sadly, you will notice that many schools have no known gospel witness at all. We are believing God to raise up workers for these schools.

As you pray, please remember to pray for the students who live in student housing. You will notice that each school listed below will have a spot to show whether they have student housing or not. A lot of really crazy stuff happens in dorms, especially co-ed dorms!

There is a section on each page for “generic” recommended prayer requests. Please see this as springboard for prayer. Allow the Holy Spirit to lead you beyond what has been recommended.

We have included a section on international students. We are using the [College Factual](#) website for all pertinent data. The international student information is under the “Student Life” tab.

Finally, we wanted to let you know that this prayer guide was compiled with data from each school’s individual website, as well as the National Center for Education Statistics ([NCES](#)). We only included schools which offer at least an associate’s degree and have a student population of over 350.

Thank you in advance, for investing time into this next generation. Only eternity will tell what we helped along and what we were able to hinder with our prayers.

Be Blessed,

Joe and Heidi Barrale

[Assemblies of God U.S. Missionaries](#)

[Chi Alpha](#) / [Adopt-A-Campus.org](#)

## A List of Schools Included in this Prayer Guide

Day 1 Prince George's Community College

Day 2 Salisbury University

Day 3 SANS Technology Institute

Day 4 St. John's College

Day 5 St. Mary's College of Maryland

Day 6 Stevenson University

Day 7 Towson University

Day 8 United States Naval Academy

Day 9 University of Baltimore

Day 10 University of Maryland Eastern Shore

Day 11 University of Maryland Global Campus

Day 12 University of Maryland, Baltimore

Day 13 University of Maryland-Baltimore County

Day 14 University of Maryland-College Park

Day 15 Washington Adventist University

Day 16 Washington College

Day 17 Wor-Wic Community College

Day 18 Advanced Technology Institute

Day 19 American National University

Day 20 Averett University

Day 21 Blue Ridge Community College

Day 22 Bluefield University

Day 23 Bon Secours Memorial College of Nursing

Day 24 Bridgewater College

Day 25 Bryant & Stratton College-Virginia Beach

Day 26 Central Virginia Community College

Day 27 Chamberlain University-Virginia

Day 28 Christopher Newport University

Day 29 Columbia College

Day 30 Dabney S Lancaster Community College

Day 31 Danville Community College

# Prince George's Community College

Largo, MD



This Campus Has NOT Been Adopted

Known Christian Groups on Campus:

No Known Gospel Witness

DAY

1

President..... Falecia Williams

Type..... 2-year Public

Campus Housing ..... No

Student Population ..... 11,357

Student-to-Faculty Ratio ..... 18 to 1

“There are approximately 372 international students at Prince George's Community College; they make up 3.1% of all total students.”



## Prayer Requests:

- 1) Jesus said in Luke 10.2 “*The harvest is plentiful, but the laborers are few; therefore beseech the Lord of the harvest to send out laborers into His harvest.*”
- 2) Please pray for all Christian groups who may be on campus. Pray for unity, revival, and boldness.
- 3) Please pray that revival among Christians will develop into an awakening on campus.
- 4) Please pray for Christian staff, faculty, and administration.
- 5) Please pray for the power of the Holy Spirit to fall on campuses across the United States.



## Mission Statement:

“Student Success. This is the highest priority at Prince George’s Community College (PGCC). The College serves all who seek a degree, want to boost a career, or are looking to learn new skills. Your success through the transformative power of education is a big part of the PGCC mission.”





# Salisbury University

## Salisbury, MD



President .....Charles A. Wight  
Type .....4-year, Public  
Campus Housing.....Yes  
Student Population.....8,124  
Student-to-Faculty Ratio.....15 to 1  
International Students (2019) .....98 from at least 27 Countries.

China, Colombia, India, Japan, Jordan, Nigeria, Philippines,  
Saudi Arabia, South Korea, Taiwan, Turkey, United Kingdom,  
Vietnam.



### Prayer Requests:

- 1) Jesus said in Luke 10.2 *“The harvest is plentiful, but the laborers are few; therefore beseech the Lord of the harvest to send out laborers into His harvest.”*
- 2) Please pray for all Christian groups who may be on campus. Pray for unity, revival, and boldness.
- 3) Please pray that revival among Christians will develop into an awakening on campus.
- 4) Please pray for Christian staff, faculty, and administration.
- 5) Please pray for the power of the Holy Spirit to fall on campuses across the United States.

### This Campus Has NOT Been Adopted

#### Known Christian Groups on Campus:

All Nations For Christ.....?  
Bethel Campus Fellowship .....?  
Catholic Campus Ministry .....?  
CRU .....?  
Fellowship of Christian Athletes .....?  
Young Life .....?

DAY  
2



### Mission Statement:

“Salisbury University is a premier comprehensive Maryland public university offering excellent, affordable education in undergraduate liberal arts, sciences, business, nursing, health sciences, social work, and education and applied master’s and doctoral programs. Our highest purpose is to empower our students with the knowledge, skills, and core values that contribute to active citizenship, gainful employment, and life-long learning in a democratic society and interdependent world.”



# SANS Technology Institute

North Bethesda, MD

President..... Ed Skoudis  
Type..... 4-year, Private For-Profit  
Campus Housing ..... No  
Student Population ..... 567  
Student-to-Faculty Ratio ..... 5 to 1  
International S ..... 0



## Prayer Requests:

- 1) Jesus said in Luke 10.2 *“The harvest is plentiful, but the laborers are few; therefore beseech the Lord of the harvest to send out laborers into His harvest.”*
- 2) Please pray for all Christian groups who may be on campus. Pray for unity, revival, and boldness.
- 3) Please pray that revival among Christians will develop into an awakening on campus.
- 4) Please pray for Christian staff, faculty, and administration.
- 5) Please pray for the power of the Holy Spirit to fall on campuses across the United States.



This Campus Has NOT Been Adopted

Known Christian Groups on Campus:

No Known Gospel Witness

DAY

3



## Mission Statement:

“The SANS Technology Institute develops technically skilled professionals and leaders who strengthen global information security through innovative and flexible approaches to learning. We prepare our students to master advanced practices through experiential and project-based learning which is delivered by faculty who are top scholar-practitioners in the industry, and our graduates implement and execute state-of-the-art cybersecurity.”





# St. John's College Annapolis, MD

President..... Nora Demleitner  
Type..... 4-year, Private Non-Profit  
Campus Housing ..... Yes  
Student Population ..... 446  
Student-to-Faculty Ratio ..... 7 to 1  
International Students (2019)..... 108 from at least 19 Countries.  
Australia, Bangladesh, China, Greece, Hong Kong, India,  
Jamaica, Japan, Mexico, Mongolia, Nepal, Netherlands, Pakistan,  
Philippines, Russia, South Korea, Taiwan, Turkey, Vietnam.



## **Prayer Requests:**

- 1) Jesus said in Luke 10.2 *“The harvest is plentiful, but the laborers are few; therefore beseech the Lord of the harvest to send out laborers into His harvest.”*
- 2) Please pray for all Christian groups who may be on campus. Pray for unity, revival, and boldness.
- 3) Please pray that revival among Christians will develop into an awakening on campus.
- 4) Please pray for Christian staff, faculty, and administration.
- 5) Please pray for the power of the Holy Spirit to fall on campuses across the United States.



**This Campus Has NOT been Adopted**

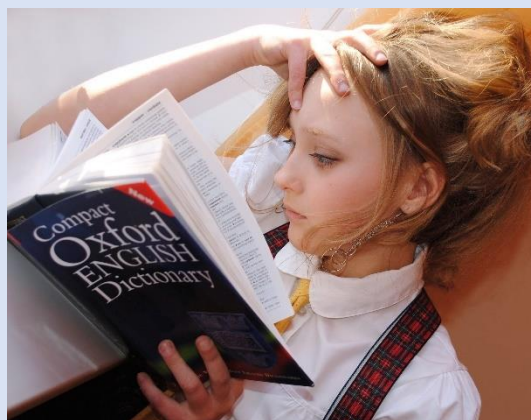
## **Known Christian Groups on Campus:**

Christian Prayer Group .....?  
Orthodox Christian Fellowship.....?

DAY  
4

## **Mission Statement:**

“St. John's College is a community dedicated to liberal education. Such education seeks to free human beings from prejudice and unexamined opinion, to help them reflect on the nature of things and on the ends and means of human endeavors, to prepare them to meet the known and unknown challenges the future will present, and to enable them to make thoughtful choices in public and private life. Students at St. John's engage in this education by participating in the activities of its community of learning. The central activity is the reading and discussion, in small classes, of the great works of the West. This study is supported by and intertwined with the study of the elements of languages, mathematics, science, and music. In Santa Fe there is also a program that focuses on the great works of the East. Through this singular discussion-based classroom experience, anchored in the rigor of the subject matters, we seek to develop in our students an ability to deal with complex issues through both cooperative inquiry and independent thinking. We hope to open the world to them in such a way that they become excellent citizens, parents, partners, colleagues, and friends.”



# St. Mary's College of Maryland

## St. Mary's City, MD

President..... Tuajuanda C. Jordan  
Type..... 4-year, Public  
Campus Housing ..... Yes  
Student Population ..... 1,508  
Student-to-Faculty Ratio ..... 9 to 1  
International Students (2019)..... 12 from at least 4 Countries.  
China, Indonesia, Japan, Norway.



### Prayer Requests:

- 1) Jesus said in Luke 10.2 *“The harvest is plentiful, but the laborers are few; therefore beseech the Lord of the harvest to send out laborers into His harvest.”*
- 2) Please pray for all Christian groups who may be on campus. Pray for unity, revival, and boldness.
- 3) Please pray that revival among Christians will develop into an awakening on campus.
- 4) Please pray for Christian staff, faculty, and administration.
- 5) Please pray for the power of the Holy Spirit to fall on campuses across the United States.



### This Campus Has NOT Been Adopted

#### Known Christian Groups on Campus:

Catholic Seahawks ..... ?  
InterVarsity..... ?

DAY  
5



### Mission Statement:

“St. Mary’s College of Maryland is Maryland’s honors college, a selective, public liberal arts college-a vibrant community of scholars and learners. We foster a rigorous and innovative curriculum; experiential learning; scholarship and creativity; close mentoring relationships; and a community dedicated to honesty, civility, and integrity. We are committed to diversity, access, and affordability. Our students, faculty and staff serve local, national, and global communities and cultivate and promote social responsibility.”





# Stevenson University

Stevenson, MD

President ..... Elliot Hirshman  
Type ..... 4-year, Private Non-Profit  
Campus Housing ..... Yes  
Student Population ..... 3,492  
Student-to-Faculty Ratio ..... 15 to 1  
International Students (2019) ..... 23 from at least 11 Countries.  
Australia, Canada, China, Germany, Ghana, Nepal, Nigeria,  
Saudi Arabia, Sri Lanka, Sweden, United Kingdom.



**This Campus Has NOT Been Adopted**

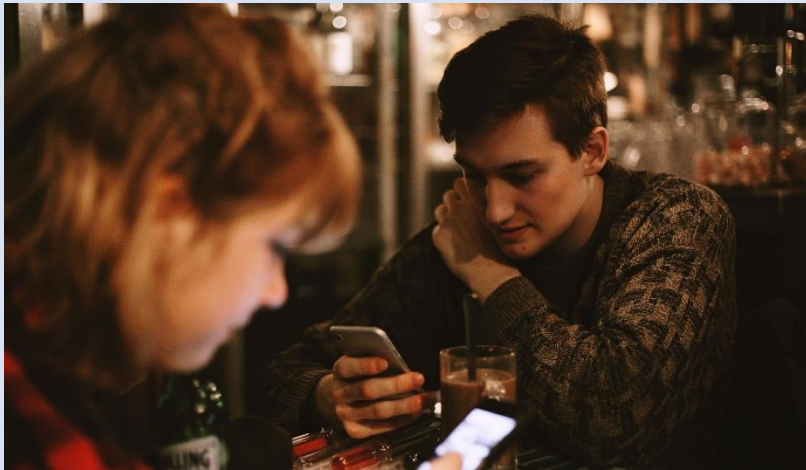
**Known Christian Groups on Campus**

Cru ..... ?

Fellowship of Christian Athletes ..... ?

DAY

6



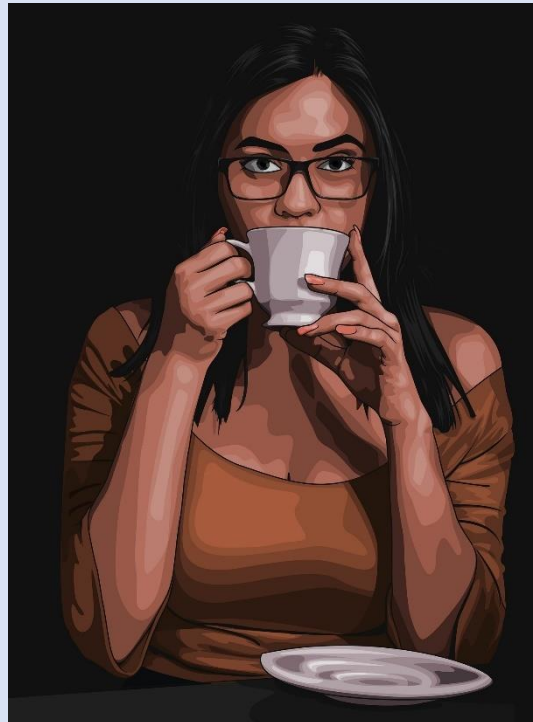
## **Prayer Requests:**

- 1) Jesus said in Luke 10.2 *“The harvest is plentiful, but the laborers are few; therefore beseech the Lord of the harvest to send out laborers into His harvest.”*
- 2) Please pray for all Christian groups who may be on campus. Pray for unity, revival, and boldness.
- 3) Please pray that revival among Christians will develop into an awakening on campus.
- 4) Please pray for Christian staff, faculty, and administration.
- 5) Please pray for the power of the Holy Spirit to fall on campuses across the United States.



## **Mission Statement:**

“The University is an innovative, coeducational, independent institution offering undergraduate and graduate students a career-focused education marked by individualized attention, civility, and respect for difference. The University blends the liberal arts with career exploration and planning, complementing a traditional education with applied learning beyond the classroom. The University meets students where they are and supports and challenges them to become reflective and accomplished individuals committed to a lifetime of learning and contribution. Students graduate with the competence and confidence needed to address creatively the opportunities and problems facing their communities, the nation, and the world.”



# Towson University

Towson, MD

President.....Kim Schatzel  
Type .....4-year, Public  
Campus Housing .....Yes  
Student Population .....21,917  
Student-to-Faculty Ratio .....16 to 1  
International Students (2019).....504 from at least 47 Countries.

Australia, Bahamas, Bangladesh, Brazil, Canada, China, Colombia, Ecuador, Egypt, France, Germany, Ghana, Greece, Hong Kong, India, Indonesia, Iran, Israel, Italy, Jamaica, Japan, Jordan, Kenya, Kuwait, Malaysia, Mexico, Mongolia, Nepal, Netherlands, Nigeria, Norway, Pakistan, Peru, Philippines, Russia, Saudi Arabia, South Korea, Spain, Sri Lanka, Sweden, Taiwan, Thailand, Turkey, Ukraine, United Arab Emirates, United Kingdom, Venezuela, Vietnam.



## **Prayer Requests:**

- 1) Jesus said in Luke 10.2 *“The harvest is plentiful, but the laborers are few; therefore beseech the Lord of the harvest to send out laborers into His harvest.”*
- 2) Please pray for all Christian groups who may be on campus. Pray for unity, revival, and boldness.
- 3) Please pray that revival among Christians will develop into an awakening on campus.
- 4) Please pray for Christian staff, faculty, and administration.
- 5) Please pray for the power of the Holy Spirit to fall on campuses across the United States.



## **This Campus Has Not Been Adopted**

### **Known Christian Groups on Campus:**

#### **Campus Ministry Staff**

Agape Campus Christian Fellowship ..... Jane and Steve Liu  
Lutheran/Episcopal Campus Ministry ..... Rev. Laura Sinche  
Baptist..... Mike McQuitty  
CRU..... Larry Kelly  
International Christian Fellowship ..... Sung Yoon Kim  
Catholic Campus Minister..... Fr. Kevin Ewing  
Disciples on Campus ..... Stephen Oguagha

#### **Student Clubs**

100% Triumph Campus Ministry ..... Osman Kamara  
Action Chapel: Dominion Campus Ministry  
..... Eyram Fiakpoe  
Alpha Omega Campus Ministry..... David Chukwueke  
Bethel Campus Fellowship ..... Hannah Uche  
Delight Ministries ..... Caroline Wanat  
Grace Life Collegiate ..... Rachel Jones  
InterVarsity ..... Faythe Johnson  
One Accord Campus Ministry ..... Abby High  
Students for Christ ..... Nathan Sugang  
Towson Bible Study Fellowship ..... Paul Magege  
Towson Fellowship of Christian Athletes ..... Nicole Kidwiler  
Towson University Young Life College ..... Alli Briley  
University Bible Fellowship ..... Hans Kuma

## **Mission Statement:**

“Towson University fosters intellectual inquiry and critical thinking preparing graduates who will serve as effective, ethical leaders and engaged citizens. Through a foundation in the liberal arts, an emphasis on rigorous academic standards, and the creation of small learning environments, we are committed to providing a collaborative, interdisciplinary and inter-professional atmosphere, excellence in teaching, leadership development, civic engagement, and applied and sponsored research opportunities at the undergraduate and graduate levels. Our graduates leave Towson University with the vision, creativity and adaptability to craft solutions that enrich the culture, society, economy, and environment of Maryland, the region, and beyond.”



DAY

7



# United States Naval Academy

Annapolis, MD

Superintendent ..... Vice Admiral Sean Buck  
Type ..... 4-year Public  
Campus Housing ..... Yes  
Student Population ..... 4,594  
Student-to-Faculty Ratio ..... 8 to 1  
International Students (2019) ..... 54 from at least 14 Countries.

Bangladesh, Jamaica, Malaysia, Mexico, Mongolia, Nigeria, Pakistan, Philippines, Singapore, South Korea, Taiwan, Thailand, United Arab Emirates.



## **Prayer Requests:**

- 1) Jesus said in Luke 10.2 *"The harvest is plentiful, but the laborers are few; therefore beseech the Lord of the harvest to send out laborers into His harvest."*
- 2) Please pray for all Christian groups who may be on campus. Pray for unity, revival, and boldness.
- 3) Please pray that revival among Christians will develop into an awakening on campus.
- 4) Please pray for Christian staff, faculty, and administration.
- 5) Please pray for the power of the Holy Spirit to fall on campuses across the United States.



## Chaplains

Command Chaplain ..... CPT Richard Bonnette  
Deputy Command Chaplain ..... LCDR Jason D. Weatherwax  
Operations Chaplain ..... Fr. Curtiss Dwyer  
1<sup>st</sup> Battalion Chaplain ..... LT Vanessa Platek  
3<sup>rd</sup> Battalion Chaplain ..... LCDR Loren Crone  
4<sup>th</sup> Battalion Chaplain ..... LT Joshua Jackson  
5<sup>th</sup> Battalion Chaplain ..... LT Ryan E. Whitfield  
6<sup>th</sup> Battalion Chaplain ..... LCDR Jennifer Howe

## Student Clubs

Baptist Collegiate Ministry ..... ?  
CRU ..... ?  
Catholic Chapel Choir ..... ?  
Catholic Daughters of America ..... ?  
Catholic Midshipman Club ..... ?  
Fellowship of Christian Athletes ..... ?  
Navigators ..... ?  
Officer Christian Fellowship ..... ?  
Protestant Midshipman Club ..... ?



## **Mission Statement:**

"To develop Midshipmen morally, mentally and physically and to imbue them with the highest ideals of duty, honor and loyalty in order to graduate leaders who are dedicated to a career of naval service and have potential for future development in mind and character to assume the highest responsibilities of command, citizenship and government."



**This Campus Has NOT Been Adopted**

**Known Christian Groups on Campus:**

DAY

8

# University of Baltimore

## Baltimore, MD

President..... Kurt L. Schmoke  
Type..... 4-year, Public  
Campus Housing ..... No  
Student Population ..... 4,169  
Student-to-Faculty Ratio ..... 13 to 1  
International Students (2019)..... 126 from at least 37 Countries.  
Bahamas, Bangladesh, Brazil, China, Ghana, India, Iran, Jamaica,  
Kenya, Kuwait, Nepal, Nigeria, Pakistan, Saudi Arabia, South Korea,  
Sweden, Taiwan, Thailand, Ukraine, United Kingdom, Vietnam.



### **Prayer Requests:**

- 1) Jesus said in Luke 10.2 *“The harvest is plentiful, but the laborers are few; therefore beseech the Lord of the harvest to send out laborers into His harvest.”*
- 2) Please pray for all Christian groups who may be on campus. Pray for unity, revival, and boldness.
- 3) Please pray that revival among Christians will develop into an awakening on campus.
- 4) Please pray for Christian staff, faculty, and administration.
- 5) Please pray for the power of the Holy Spirit to fall on campuses across the United States.



**This Campus Has NOT Been Adopted**  
**Known Christian Groups on Campus:**  
Disciples on Campus..... ?

DAY  
9



### **Mission Statement:**

“The University of Baltimore offers career-focused education for aspiring and current professionals, providing the region with highly educated leaders who make distinctive contributions to the broader community. “





# University of Maryland Eastern Shore

## Princess Anne, MD

President.....Heidi M. Anderson  
 Type .....4-year, Public  
 Campus Housing.....Yes  
 Student Population .....2,646  
 Student-to-Faculty Ratio.....10 to 1

International Students (2019).....119 from at least 25 Countries.

Bahamas, Bangladesh, Brazil, Canada, China, Egypt, France, Ghana, India, Jamaica, Jordan, Kenya, Mongolia, Netherlands, Nigeria, Russia, South Korea, Spain, Sri Lanka, Taiwan, Thailand, Ukraine, Venezuela, Vietnam.



### Prayer Requests:

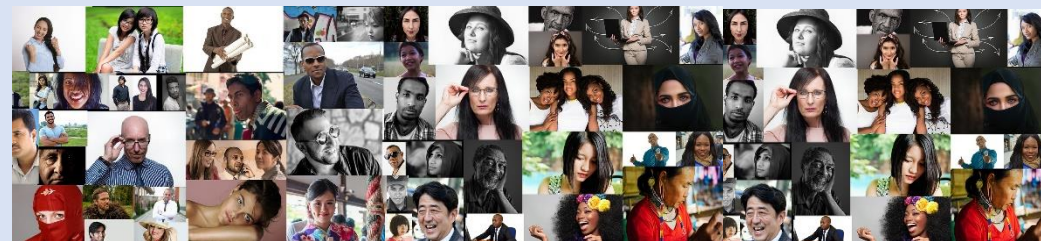
- 1) Jesus said in Luke 10.2 *“The harvest is plentiful, but the laborers are few; therefore beseech the Lord of the harvest to send out laborers into His harvest.”*
- 2) Please pray for all Christian groups who may be on campus. Pray for unity, revival, and boldness.
- 3) Please pray that revival among Christians will develop into an awakening on campus.
- 4) Please pray for Christian staff, faculty, and administration.
- 5) Please pray for the power of the Holy Spirit to fall on campuses across the United States.



### This Campus Has NOT Been Adopted

### Known Christian Groups on Campus:

Bethel Campus Fellowship..... ?  
 Gospel Choir..... ?  
 New Creation Fellowship..... ?  
 Praise Fellowship ..... ?



### Mission Statement:

“The University of Maryland Eastern Shore (UMES), the State's Historically Black 1890 Land Grant institution, has its purpose and uniqueness grounded in distinctive learning, discovery, and engagement opportunities in the arts and sciences, education, technology, engineering, agriculture, business, and health professions. UMES is a student-centered, doctoral research degree-granting university known for its nationally accredited undergraduate and graduate programs, applied research, and highly valued graduates. UMES provides individuals, including first generation college students, access to a holistic learning environment that fosters multicultural diversity, academic success, and intellectual and social growth. UMES prepares graduates to address challenges in a global knowledge-based economy, while maintaining its commitment to meeting the workforce and economic development needs of the Eastern Shore, the State, the Nation, and the World.”



DAY  
10



# University of Maryland Global Campus

## Adelphi, MD

President ..... Gregory Fowler  
Type ..... 4-year, Public  
Campus Housing ..... No  
Student Population ..... 58,526  
Student-to-Faculty Ratio ..... 19 to 1  
“There are approximately 1,045 [international](#) students at UMGC; they make up 1.7% of all total students.”



### **Prayer Requests:**

- 1) Jesus said in Luke 10.2 “*The harvest is plentiful, but the laborers are few; therefore beseech the Lord of the harvest to send out laborers into His harvest.*”
- 2) Please pray for all Christian groups who may be on campus. Pray for unity, revival, and boldness.
- 3) Please pray that revival among Christians will develop into an awakening on campus.
- 4) Please pray for Christian staff, faculty, and administration.
- 5) Please pray for the power of the Holy Spirit to fall on campuses across the United States.



**This Campus Has NOT Been Adopted**

**Known Christian Groups on Campus:**

No Known Gospel Witness

DAY  
11



### **Mission Statement:**

“The mission of UMGC is improving the lives of adult learners. We accomplish this by:

- Operating as Maryland's open university, serving working adults, military servicemen and servicewomen and their families, and veterans who reside in Maryland, across the United States, and around the world
- Providing our students with affordable, open access to valued, quality higher education
- Serving as a recognized leader in career-relevant education, embracing innovation and change aligned with our purpose, and sharing our perspectives and expertise”





# University of Maryland - Baltimore

## Baltimore, MD

President .....Bruce E. Jarrell  
Type .....4-year, Public  
Campus Housing.....Yes  
Student Population.....7,137  
Student-to-Faculty Ratio.....7 to 1  
“There are approximately 291 [international](#) students at UMB; they make up 4.3% of all total students.”



### **Prayer Requests:**

- 1) Jesus said in Luke 10.2 “*The harvest is plentiful, but the laborers are few; therefore beseech the Lord of the harvest to send out laborers into His harvest.*”
- 2) Please pray for all Christian groups who may be on campus. Pray for unity, revival, and boldness.
- 3) Please pray that revival among Christians will develop into an awakening on campus.
- 4) Please pray for Christian staff, faculty, and administration.
- 5) Please pray for the power of the Holy Spirit to fall on campuses across the United States.



### **This Campus Has NOT Been Adopted**

### **Known Christian Groups on Campus:**

Christian Medical and Dental Association.....?  
Christian Legal Society .....?  
Catholic Medical Student Association .....?  
Christian Medical Society .....?  
Nurses Christian Fellowship .....Brianna Steelman  
Christian Pharmacists Fellowship International....?  
Christian Social Work Fellowship .....?



### **Mission Statement:**

“To improve the human condition and serve the public good of Maryland and society at large through education, research, clinical care, and service.”

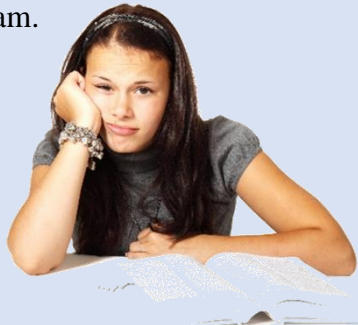


# University of Maryland-Baltimore County Baltimore, MD

President (As of August 2022) ..... Valerie Sheares Ashby  
Type ..... 4-year, Public  
Campus Housing ..... Yes  
Student Population ..... 13,497  
Student-to-Faculty Ratio ..... 17 to 1

International Students (2019) ..... 1,075 from at least 45 Countries.

Australia, Bangladesh, Brazil, Canada, China, Colombia, Egypt, France, Germany, Ghana, Greece, Hong Kong, India, Indonesia, Iran, Israel, Italy, Jamaica, Japan, Jordan, Kenya, Kuwait, Malaysia, Mexico, Nepal, Netherlands, Nigeria, Pakistan, Peru, Philippines, Russia, Saudi Arabia, Singapore, South Korea, Spain, Sri Lanka, Sweden, Taiwan, Thailand, Turkey, Ukraine, United Arab Emirates, United Kingdom, Venezuela, Vietnam.



## **Prayer Requests:**

- 1) Jesus said in Luke 10.2 *"The harvest is plentiful, but the laborers are few; therefore beseech the Lord of the harvest to send out laborers into His harvest."*
- 2) Please pray for all Christian groups who may be on campus. Pray for unity, revival, and boldness.
- 3) Please pray that revival among Christians will develop into an awakening on campus.
- 4) Please pray for Christian staff, faculty, and administration.
- 5) Please pray for the power of the Holy Spirit to fall on campuses across the United States.



## **This Campus Has NOT Been Adopted**

### **Known Christian Groups on Campus:**

Agape Campus Christian Fellowship ..... Bethel Ghezai  
Alpha Omega Campus Ministry ..... Joshua Richards  
Bethel Campus Fellowship ..... Ndeh Tadzong  
Campus Disciples ..... Kristine Woo  
Catholic Retrievers ..... Thomas Maddox  
Chinese Bible Study ..... Zhou Feng  
Coptic Club ..... Barbara Ebied  
CRU Club ..... Kathryn Crummitt  
International Student Connect ..... Shaniah Reece  
InterVarsity Christian Fellowship ..... Sierra Barber  
Living Water Christian Fellowship ..... Rachel Kim  
Lutheran-Episcopal Campus Ministry ..... Eunice Aninakwa  
Students for Christ Campus Ministry ..... Coby Dolorfino  
Young Life ..... Jillian Taylor

### **Mission Statement:**

"UMBC is a dynamic public research university integrating teaching, research and service to benefit the citizens of Maryland. As an Honors University, the campus offers academically talented students a strong undergraduate liberal arts foundation that prepares them for graduate and professional study, entry into the workforce, and community service and leadership. UMBC emphasizes science, engineering, information technology, human services and public policy at the graduate level. UMBC contributes to the economic development of the State and the region through entrepreneurial initiatives, workforce training, K-16 partnerships, and technology commercialization in collaboration with public agencies and the corporate community. UMBC is dedicated to cultural and ethnic diversity, social responsibility and lifelong learning."



DAY  
13



# University of Maryland-College Park

## College Park, MD



President ..... Darryll J. Pines

Type ..... 4-year, Public

Campus Housing ..... Yes

Student Population ..... 40,709

Student-to-Faculty Ratio ..... 17 to 1

International Students (2019) ..... 5,173 from at least 49 Countries.

Australia, Bahamas, Bangladesh, Brazil, Canada, China, Colombia, Ecuador, Egypt, France, Germany, Ghana, Greece, Hong Kong, India, Indonesia, Iran, Israel, Italy, Jamaica, Japan, Jordan, Kenya, Kuwait, Malaysia, Mexico, Mongolia, Nepal, Netherlands, Nigeria, Norway, Pakistan, Peru, Philippines, Russia, Saudi Arabia, Singapore, South Korea, Spain, Sri Lanka, Sweden, Taiwan, Thailand, Turkey, Ukraine, United Arab Emirates, United Kingdom, Venezuela, Vietnam.

### Mission Statement:

“Achieving excellence in teaching, research, and public service within a supportive, respectful and inclusive environment is central to the mission and identity of the University of Maryland, College Park (UMD)...”



### Prayer Requests:

- 1) Jesus said in Luke 10.2 “*The harvest is plentiful, but the laborers are few; therefore beseech the Lord of the harvest to send out laborers into His harvest.*”
- 2) Please pray for all Christian groups who may be on campus. Pray for unity, revival, and boldness.
- 3) Please pray that revival among Christians will develop into an awakening on campus.
- 4) Please pray for Christian staff, faculty, and administration.
- 5) Please pray for the power of the Holy Spirit to fall on campuses across the United States.

## This Campus Has NOT Been Adopted

### Known Christian Groups on Campus:

#### University Chaplains

Baptist .....	Jessica Senasack
Black Student Ministries .....	Haywood Robinson, III
Eastern Orthodox .....	Kosmos Karavellas
Episcopal/Anglican .....	Sarah Akers-Cardwell
Lutheran .....	Ray Ranker
Roman Catholic .....	Fr. Conrad Murphy
United Campus Ministry .....	Holly Ulmer
United Methodist .....	Michelle Mejia

#### Student Groups

100% Triumph .....	Katarina Boutselis
4Corners International Group .....	Nianyang Wang
Agape Campus Christian Fellowship .....	Itenia Quezada
Aletheia at the University of Maryland .....	Stephen James Duranske
Alpha Omega Maryland .....	Jamie Loren Perry
Apostolic Campus Ministry .....	Joshua Lewis
Apostolos Missions at UMD .....	Garrett Woods
Asian American InterVarsity Christian Fellowship .....	Samuel Chen
Asian Baptist Student Koinonia .....	Luke Misumi
Bethel Collegiate Ministries .....	Eseose Azobua
Campus Disciples .....	Irene Doyeon Kwak
Catholic Terps .....	Owen Falco
CBCM .....	Virginia Cheng
Chinese Christian Bible Study Group .....	Esther Rung-Chian Lo
Christ In Culture .....	Derreck Boateng-Agyemang
Christians on Campus .....	Phoebe Chan
CRU .....	Angela Bruce
Delight Ministries .....	Jalyn Mathis
Design Movement .....	Samantha Kurapaty
Episcopal Terps .....	Clark Abbott
G1: God First .....	Elizabeth Philogene
GRA Maryland .....	Brittney Adinuba
Greek InterVarsity .....	Emma Meverden
Kairos Christian Fellowship .....	Stephanie Treat
Kharis Campus Ministry .....	Emily Son
KOINONIA .....	Luke Kim
Leadership International (A.K.A. First Love) .....	Cedrick Ofori
MARYLAND CHRISTIAN FELLOWSHIP .....	Ian Rosario
Multiethnic InterVarsity Christian Fellowship .....	Adam Flesher
OneU College Park .....	Abigail Eberhard
REFORMED UNIVERSITY FELLOWSHIP .....	Joshua Peyton Bates
Roots Christian Fellowship .....	Maria Mao
Royalhouse Students and Associates .....	Benjamin Adarkwa
United Methodist Campus Ministry .....	Numbi Lutebula
University Christian Outreach .....	Rachel Heuver

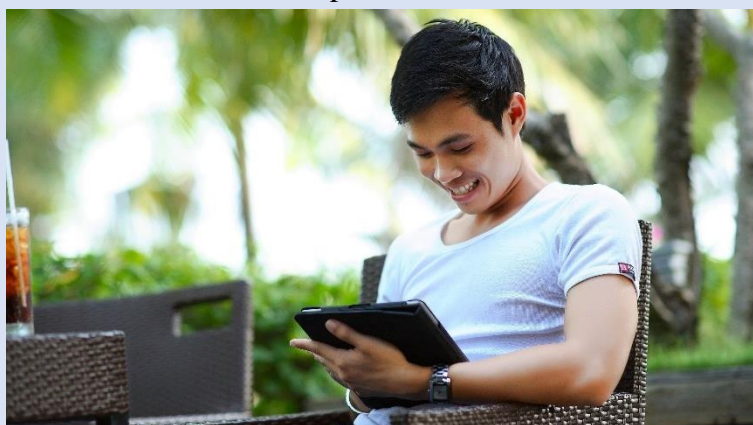
DAY  
14



# Washington Adventist University

Takoma Park, MD

President.....Weymouth Spence  
Type .....4-year, Private Non-Profit  
Campus Housing .....Yes  
Student Population .....968  
Student-to-Faculty Ratio .....11 to1  
International Students (2019).....162 from at least 19 countries.  
Bahamas, Brazil, Canada, China, Egypt, Germany, Ghana, India,  
Jamaica, Kenya, Malaysia, Mexico, Nigeria, Philippines, Russia,  
Saudi Arabia, South Korea, Spain, Sri Lanka.



## Prayer Requests:

- 1) Jesus said in Luke 10.2 *“The harvest is plentiful, but the laborers are few; therefore beseech the Lord of the harvest to send out laborers into His harvest.”*
- 2) Please pray for all Christian groups who may be on campus. Pray for unity, revival, and boldness.
- 3) Please pray that revival among Christians will develop into an awakening on campus.
- 4) Please pray for Christian staff, faculty, and administration.
- 5) Please pray for the power of the Holy Spirit to fall on campuses across the United States.



**This Campus Has NOT Been Adopted**

**Known Christian Groups on Campus:**

## **Office of Ministry**

### **Mission Statement**

“To foster a spiritual community that exemplifies a Christ-centered Biblical lifestyle through discipleship, worship, fellowship, leadership, and service in order to make a difference in the local and global community.”

### **Vision Statement**

“To cultivate a spiritually viable environment that is Biblically rooted in the Seventh-Day-Adventist beliefs that would make Washington Adventist University the most sought-after Christian community of higher learning.”



### **Mission Statement:**

“Washington Adventist University is a learning community committed to the Seventh-day Adventist Christian vision of excellence and service. This cosmopolitan institution challenges students to seize the opportunities for learning in the nation's capital in order to become moral leaders in communities throughout the world.”



DAY  
15



# Washington College

## Chestertown, MD



President.....Michael J. Sosulski  
Type .....4-year, Private Non-Profit  
Campus Housing.....Yes  
Student Population .....1,089  
Student-to-Faculty Ratio.....9 to 1  
International Students (2019).....101 from at least 24 Countries.

Bahamas, Bangladesh, Canada, China, Colombia, France, Germany, India, Indonesia, Italy, Jamaica, Japan, Nigeria, Norway, Peru, Saudi Arabia, South Korea, Sweden, Taiwan, Thailand, United Kingdom, Venezuela, Vietnam.



### **Prayer Requests:**

- 1) Jesus said in Luke 10.2 *“The harvest is plentiful, but the laborers are few; therefore beseech the Lord of the harvest to send out laborers into His harvest.”*
- 2) Please pray for all Christian groups who may be on campus. Pray for unity, revival, and boldness.
- 3) Please pray that revival among Christians will develop into an awakening on campus.
- 4) Please pray for Christian staff, faculty, and administration.
- 5) Please pray for the power of the Holy Spirit to fall on campuses across the United States.

**This Campus Has NOT Been Adopted**

**Known Christian Groups on Campus:**  
InterVarsity .....Jude Souazoube

DAY  
16



### **Mission Statement:**

“Washington College challenges and inspires emerging citizen leaders to discover lives of purpose and passion.”





# Wor-Wic Community College

## Salisbury, MD



**This Campus Has NOT Been Adopted**

**Known Christian Groups on Campus:**

Wor-Wic Christian Community .....Parshall Shockley (Advisor)

DAY  
17

President .....Murray K. Hoy  
Type .....2-year, Public  
Campus Housing.....No  
Student Population.....2,705  
Student-to-Faculty Ratio.....14 to 1  
“There are approximately 19 [international](#) students at Wor-Wic Community College; they make up 0.6% of all total students.”



### **Mission Statement:**

“Wor-Wic Community College empowers a diverse population of students to achieve success by delivering high-quality, affordable education, professional training, workforce development opportunities, and comprehensive student services that strengthen economic growth and improve the quality of life on the Lower Eastern Shore. “

### **Prayer Requests:**

- 1) Jesus said in Luke 10.2 “*The harvest is plentiful, but the laborers are few; therefore beseech the Lord of the harvest to send out laborers into His harvest.*”
- 2) Please pray for all Christian groups who may be on campus. Pray for unity, revival, and boldness.
- 3) Please pray that revival among Christians will develop into an awakening on campus.
- 4) Please pray for Christian staff, faculty, and administration.
- 5) Please pray for the power of the Holy Spirit to fall on campuses across the United States.





# Advanced Technology Institute

## Virginia Beach, VA

Campus Director ..... Andrew Gladstein  
Type ..... 2-year, Private For-Profit  
Campus Housing ..... No  
Student Population ..... 461  
Student-to-Faculty Ratio ..... 14 to 1  
International Students ..... 0

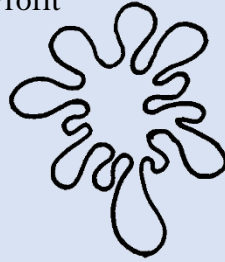
### **\*Additional Location:**

Norfolk, VA



### **Prayer Requests:**

- 1) Jesus said in Luke 10.2 *"The harvest is plentiful, but the laborers are few; therefore beseech the Lord of the harvest to send out laborers into His harvest."*
- 2) Please pray for all Christian groups who may be on campus. Pray for unity, revival, and boldness.
- 3) Please pray that revival among Christians will develop into an awakening on campus.
- 4) Please pray for Christian staff, faculty, and administration.
- 5) Please pray for the power of the Holy Spirit to fall on campuses across the United States.



**This Campus Has NOT Been Adopted**

**Known Christian Groups on Campus:**

No Known Gospel Witness

DAY  
18



### **Mission Statement:**

"Advanced Technology Institute is committed to offering associate degree and diploma programs that promote the student's ability to enter or strengthen a chosen career. The Institute is committed to being a premier institution of higher education with an innovative, student-centered learning environment. The student's learning experience and placement opportunities are enhanced through studies that provide a balance of general academics and technical skills. The Institute responds to the educational needs of the communities it serves through cooperative efforts with students, faculty, alumni, businesses, organizations, professional associations, and government. Advanced Technology Institute provides educational opportunities through curricula in practical technical programs that are designed to prepare a student for direct entry into the work place."





# American National University

## Salem, VA

President ..... Frank Longaker  
Type ..... 4-year, Private For-Profit  
Campus Housing ..... No  
Student Population ..... 931  
Student-to-Faculty Ratio ..... 39 to 1  
“There are approximately 7 [international](#) students at American National University; they make up 0.7% of all total students.”



### Prayer Requests:

- 1) Jesus said in Luke 10.2 “*The harvest is plentiful, but the laborers are few; therefore beseech the Lord of the harvest to send out laborers into His harvest.*”
- 2) Please pray for all Christian groups who may be on campus. Pray for unity, revival, and boldness.
- 3) Please pray that revival among Christians will develop into an awakening on campus.
- 4) Please pray for Christian staff, faculty, and administration.
- 5) Please pray for the power of the Holy Spirit to fall on campuses across the United States.



**This Campus Has NOT Been Adopted**  
**Known Christian Groups on Campus:**  
No Known Gospel Witness

DAY  
19



### Mission Statement:

“American National University provides opportunities for individuals who are seeking to achieve their career goals by offering credential and degree programs through distance education and blended learning. American National University is dedicated to ensuring adult students have access to quality programs in career focused disciplines that provide the skills needed to be competitive in today’s changing marketplace.”





# Averett University

## Danville, VA

President ..... Tiffany McKillip Franks  
Type ..... 4-year, Private Non-Profit  
Campus Housing ..... Yes  
Student Population ..... 887  
Student-to-Faculty Ratio ..... 12 to 1

International Students (2019) ..... 54 from at least 14 Countries.

Australia, Bahamas, Brazil, Canada, Colombia, Ecuador, France, Mexico, Netherlands, Norway, Russia, Spain, Sweden, United Kingdom.



### Prayer Requests:

- 1) Jesus said in Luke 10.2 *“The harvest is plentiful, but the laborers are few; therefore beseech the Lord of the harvest to send out laborers into His harvest.”*
- 2) Please pray for all Christian groups who may be on campus. Pray for unity, revival, and boldness.
- 3) Please pray that revival among Christians will develop into an awakening on campus.
- 4) Please pray for Christian staff, faculty, and administration.
- 5) Please pray for the power of the Holy Spirit to fall on campuses across the United States.



**This Campus Has NOT Been Adopted**

### **Known Christian Groups on Campus:**

University Chaplain ..... Skyler Daniel  
Catholic Campus Ministry ..... Kara Oaks  
Christian Student Fellowship ..... Jon Stephens  
Focus (Student driven worship) ..... ?



### **Mission Statement:**

“Averett University prepares students to serve and lead as catalysts for positive change. Averett fulfills this mission by educating students from diverse backgrounds, cultures, and nations through liberal arts-based undergraduate and graduate programs in a personal, collegial, interdisciplinary environment.”



DAY  
20



# Blue Ridge Community College

## Weyers Cave, VA

President..... John A. Downey  
Type..... 2-year, Public  
Campus Housing ..... No  
Student Population ..... 3,462  
Student-to-Faculty Ratio ..... 18 to 1  
“There are approximately 40 international students at Blue Ridge Community College; they make up 1.0% of all total students.”



### Prayer Requests:

- 1) Jesus said in Luke 10.2 “*The harvest is plentiful, but the laborers are few; therefore beseech the Lord of the harvest to send out laborers into His harvest.*”
- 2) Please pray for all Christian groups who may be on campus. Pray for unity, revival, and boldness.
- 3) Please pray that revival among Christians will develop into an awakening on campus.
- 4) Please pray for Christian staff, faculty, and administration.
- 5) Please pray for the power of the Holy Spirit to fall on campuses across the United States.



**This Campus Has NOT Been Adopted**

**Known Christian Groups on Campus:**

Blue Ridge Christian Fellowship ..... Seana Powell

DAY  
21



### **Mission Statement:**

“Blue Ridge Community College provides comprehensive certificate and associate degree programs, workforce development training, and continuing education courses, designed to meet the educational needs of Virginia’s central Shenandoah Valley. BRCC empowers students through academic rigor, quality student services, and affordable educational programs.”





# Bluefield University

Bluefield, VA

President ..... David W. Olive  
Type ..... 4-year, Private Non-Profit  
Campus Housing ..... Yes  
Student Population ..... 965  
Student-to-Faculty Ratio ..... 14 to 1  
International Students (2019) ..... 27 from at least 16 Countries.  
Australia, Brazil, Canada, Ecuador, Germany, Russia, Spain,  
Sweden, Ukraine, United Kingdom.



## Prayer Requests:

- 1) Jesus said in Luke 10.2 *“The harvest is plentiful, but the laborers are few; therefore beseech the Lord of the harvest to send out laborers into His harvest.”*
- 2) Please pray for all Christian groups who may be on campus. Pray for unity, revival, and boldness.
- 3) Please pray that revival among Christians will develop into an awakening on campus.
- 4) Please pray for Christian staff, faculty, and administration.
- 5) Please pray for the power of the Holy Spirit to fall on campuses across the United States.



## This Campus Has NOT Been Adopted

### Known Christian Groups on Campus:

Bluefield Collegiate Ministries  
Campus Pastor..... Robbie Gaines  
Elevate..... Student-led chapel

DAY  
22



### Mission Statement:

“Bluefield University is a Christ-centered learning community developing servant leaders to transform the world.”



# Bon Secours Memorial College of Nursing Richmond, VA

Dean .....Chris-Tenna M. Perkins  
Type .....4-year, Private Non-Profit  
Campus Housing.....No  
Student Population.....456  
Student-to-Faculty Ratio.....12 to 1  
International Students .....0



## Prayer Requests:

- 1) Jesus said in Luke 10.2 *“The harvest is plentiful, but the laborers are few; therefore beseech the Lord of the harvest to send out laborers into His harvest.”*
- 2) Please pray for all Christian groups who may be on campus. Pray for unity, revival, and boldness.
- 3) Please pray that revival among Christians will develop into an awakening on campus.
- 4) Please pray for Christian staff, faculty, and administration.
- 5) Please pray for the power of the Holy Spirit to fall on campuses across the United States.



**This Campus Has NOT Been Adopted**  
**Known Christian Groups on Campus:**  
No Known Gospel Witness

DAY  
23



## **Mission Statement:**

“The mission of Bon Secours Memorial College of Nursing is to foster holistic lifelong learning through innovative career education designed to cultivate servant leaders who are passionate about bringing people and communities to health and wholeness. “





# Bridgewater College

Bridgewater, VA



President ..... David W. Bushman  
Type ..... 4-year, Private Non-Profit  
Campus Housing ..... Yes  
Student Population ..... 1,597  
Student-to-Faculty Ratio ..... 13 to 1  
International Students (2019) ..... 36 from at least 11 Countries.  
Australia, Canada, Ecuador, Egypt, Ghana, Jamaica, Jordan,  
Mexico, Peru, United Kingdom, Vietnam.



## Prayer Requests:

- 1) Jesus said in Luke 10.2 *"The harvest is plentiful, but the laborers are few; therefore beseech the Lord of the harvest to send out laborers into His harvest."*
- 2) Please pray for all Christian groups who may be on campus. Pray for unity, revival, and boldness.
- 3) Please pray that revival among Christians will develop into an awakening on campus.
- 4) Please pray for Christian staff, faculty, and administration.
- 5) Please pray for the power of the Holy Spirit to fall on campuses across the United States.

## This Campus Has NOT Been Adopted

### Known Christian Groups on Campus:

College Chaplain ..... Robbie Miller  
Brethren Student Movement ..... Chris Zepp (Advisor)  
Campus Crusade for Christ ..... John Manson (Advisor)  
Catholic Campus Ministry ..... ?  
Fellowship of Christian Athletes ..... Jennie Carr (Advisor)



### Mission Statement:

"Bridgewater College empowers students to lead principled lives of purpose and consequence marked by professional accomplishment and personal fulfillment. Our graduates are distinguished by their collaborative spirit, reason, and resilience of mind in service to a diverse and global community."



DAY  
24



# Bryant & Stratton College

## Virginia Beach

### Virginia Beach, VA



This Campus Has NOT Been Adopted

Known Christian Groups on Campus:

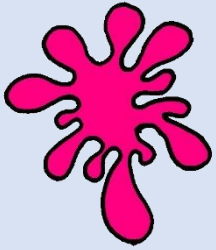
No Known Gospel Witness

DAY  
25

President & CEO ..... Francis J. Felser  
President - Elect & COO ..... David Vaden  
Type ..... 4-year, Private For-Profit  
Campus Housing ..... No  
Student Population ..... 1,515  
Student-to-Faculty Ratio ..... 18 to 1  
International Students ..... 0

#### **\*Additional Locations**

Hampton, VA  
Richmond, VA



#### **Prayer Requests:**

- 1) Jesus said in Luke 10.2 *“The harvest is plentiful, but the laborers are few; therefore beseech the Lord of the harvest to send out laborers into His harvest.”*
- 2) Please pray for all Christian groups who may be on campus. Pray for unity, revival, and boldness.
- 3) Please pray that revival among Christians will develop into an awakening on campus.
- 4) Please pray for Christian staff, faculty, and administration.
- 5) Please pray for the power of the Holy Spirit to fall on campuses across the United States.



#### **Mission Statement:**

“Bryant & Stratton College offers a personalized career education and experience leading to high-demand professions so graduates are prepared for their careers and life pursuits.”





# Central Virginia Community College

## Lynchburg, VA



**This Campus Has NOT Been Adopted**

**Known Christian Groups on Campus:**

CRU ..... Stephen Perry (Advisor)

DAY  
26

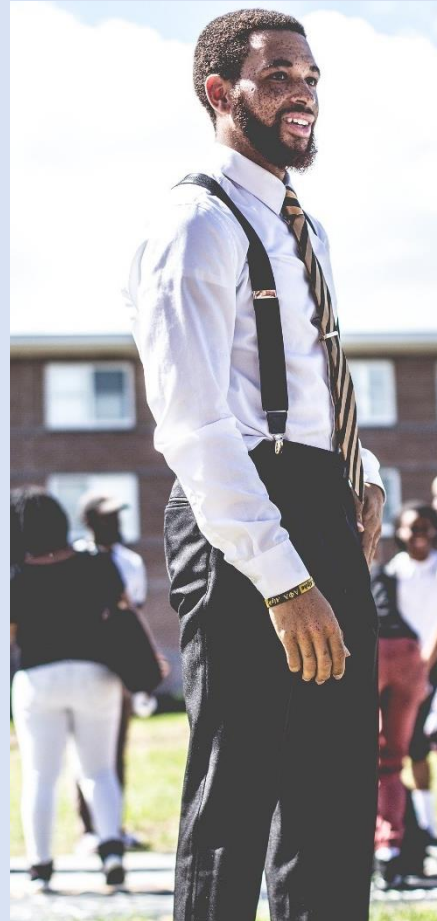
President ..... John Capps  
Type ..... 2-year, Public  
Campus Housing ..... No  
Student Population ..... 3,370  
Student-to-Faculty Ratio ..... 19 to 1

“There are approximately 16 international students at Central Virginia Community College; they make up 0.4% of all total students.”



### **Prayer Requests:**

- 1) Jesus said in Luke 10.2 “*The harvest is plentiful, but the laborers are few; therefore beseech the Lord of the harvest to send out laborers into His harvest.*”
- 2) Please pray for all Christian groups who may be on campus. Pray for unity, revival, and boldness.
- 3) Please pray that revival among Christians will develop into an awakening on campus.
- 4) Please pray for Christian staff, faculty, and administration.
- 5) Please pray for the power of the Holy Spirit to fall on campuses across the United States.



### **Mission Statement:**

“Central Virginia Community College is an accessible, comprehensive, public, two-year, higher education institution that is dedicated to:

- Providing open, flexible, affordable, quality learning opportunities for personal growth and the acquisition of knowledge and skills necessary for productive and meaningful life,
- Providing general education, transfer, applied science, certificate, and diploma programs,
- Determining and addressing the training needs of business, industry, and government to benefit the service area,
- Supporting workforce and economic development through participation in regional organizations and training for new and/or expanding businesses.
- Providing support services for education, training, technology infrastructure, and workforce development.”





# Chamberlain University-Virginia

Vienna, VA



President..... Karen Cox  
Campus Director ..... Lindsey Bradbury  
Type..... 4-year, Private For-Profit  
Campus Housing ..... No  
Student Population ..... 622  
Student-to-Faculty Ratio ..... 13 to 1  
“There are approximately 3 [international](#) students at Chamberlain - Virginia; they make up 0.6% of all total students.”



## **Prayer Requests:**

- 1) Jesus said in Luke 10.2 “*The harvest is plentiful, but the laborers are few; therefore beseech the Lord of the harvest to send out laborers into His harvest.*”
- 2) Please pray for all Christian groups who may be on campus. Pray for unity, revival, and boldness.
- 3) Please pray that revival among Christians will develop into an awakening on campus.
- 4) Please pray for Christian staff, faculty, and administration.
- 5) Please pray for the power of the Holy Spirit to fall on campuses across the United States.

**This Campus Has NOT Been Adopted**

**Known Christian Groups on Campus:**

No Known Gospel Witness

DAY  
27



## **Mission Statement:**

“To educate, empower and embolden diverse healthcare professionals who advance the health of people, families, communities and nations.”





# Christopher Newport University

## Newport News, VA

President ..... Paul S. Tribble Jr.  
Type ..... 4-year, Public  
Campus Housing ..... Yes  
Student Population ..... 4,868  
Student-to-Faculty Ratio ..... 14 to 1  
International Students (2019) ..... 18 from at least 9 Countries.  
Canada, China, Germany, India, Malaysia, Russia, Spain, Thailand, United Kingdom.



### Prayer Requests:

- 1) Jesus said in Luke 10.2 *“The harvest is plentiful, but the laborers are few; therefore beseech the Lord of the harvest to send out laborers into His harvest.”*
- 2) Please pray for all Christian groups who may be on campus. Pray for unity, revival, and boldness.
- 3) Please pray that revival among Christians will develop into an awakening on campus.
- 4) Please pray for Christian staff, faculty, and administration.
- 5) Please pray for the power of the Holy Spirit to fall on campuses across the United States.



### This Campus Has NOT Been Adopted

#### Known Christian Groups on Campus:

Catholic Campus Ministry..... Emily Louis  
Christian Student Fellowship ..... Thomas Ryerse  
CRU ..... Elijah Fox  
Delight Ministries..... Hart Emily  
Fellowship of Christian Athletes ..... Scott Forbes  
Greek CRU ..... Noah Maertes  
InterVarsity Fellowship ..... Quel Faith  
Reformed University Fellowship ..... Anna Plaia  
Sigma Alpha Omega ..... Emma Donovan  
THRIVE Organization ..... ?  
Young Life ..... Andrew Nicolaus

DAY  
28



### Mission Statement:

“The mission of Christopher Newport University is to provide educational and cultural opportunities that benefit CNU students, the residents of the Commonwealth of Virginia and the nation. Christopher Newport provides outstanding academic programs, encourages service and leadership within the community, and provides opportunities for student involvement in nationally and regionally recognized research and arts programs...”





# Columbia College

Vienna, VA

President/Founder .....Richard K. Kim  
Type .....2-year, Private For-Profit  
Campus Housing .....No  
Student Population .....371  
Student-to-Faculty Ratio.....18 to 1  
“There are approximately 118 [international](#) students at Columbia College; they make up 33.0% of all total students.”



## **Prayer Requests:**

- 1) Jesus said in Luke 10.2 “*The harvest is plentiful, but the laborers are few; therefore beseech the Lord of the harvest to send out laborers into His harvest.*”
- 2) Please pray for all Christian groups who may be on campus. Pray for unity, revival, and boldness.
- 3) Please pray that revival among Christians will develop into an awakening on campus.
- 4) Please pray for Christian staff, faculty, and administration.
- 5) Please pray for the power of the Holy Spirit to fall on campuses across the United States.



**This Campus Has NOT Been Adopted**

**Known Christian Groups on Campus:**  
No Known Gospel Witness

DAY  
29



## **Missions Statement:**

“Columbia College provides high-quality, relevant, and varied educational programs and opportunities for the intellectual, cultural, and personal growth of all members of its community. The College values its role as an educational institution, embracing change and responding to the complex needs of those it serves.”





# Dabney S Lancaster Community College

Clifton Forge, VA

President ..... John J. Rainone  
Type ..... 2-year, Public  
Campus Housing ..... No  
Student Population ..... 1,075  
Student-to-Faculty Ratio ..... 17 to 1  
International Students ..... 0



## Prayer Requests:

- 1) Jesus said in Luke 10.2 *“The harvest is plentiful, but the laborers are few; therefore beseech the Lord of the harvest to send out laborers into His harvest.”*
- 2) Please pray for all Christian groups who may be on campus. Pray for unity, revival, and boldness.
- 3) Please pray that revival among Christians will develop into an awakening on campus.
- 4) Please pray for Christian staff, faculty, and administration.
- 5) Please pray for the power of the Holy Spirit to fall on campuses across the United States.



This Campus Has NOT Been Adopted

Known Christian Groups on Campus:

Fellowship of Faith ..... Tina Dressler

DAY  
30



## Mission Statement:

“Dabney S. Lancaster Community College provides an opportunity for the extension of knowledge, skills and personal enrichment in a forum that maintains high academic standards, is financially and geographically accessible and respects students’ diverse backgrounds, rights, responsibilities, and abilities. In partnership with local business, industry, government, professions and other educational institutions, DSLCC provides programs and services that prepare members of the community to reach their potential as engaged and learned citizens (March 2015).”





# Danville Community College

Danville, VA

Interim President ..... Muriel Mickles  
Type ..... 2-year, Public  
Campus Housing ..... No  
Student Population ..... 2,411  
Student-to-Faculty Ratio ..... 20 to 1  
“There are approximately 15 [international](#) students at Danville Community College; they make up 0.5% of all total students.”



## **Prayer Requests:**

- 1) Jesus said in Luke 10.2 “*The harvest is plentiful, but the laborers are few; therefore beseech the Lord of the harvest to send out laborers into His harvest.*”
- 2) Please pray for all Christian groups who may be on campus. Pray for unity, revival, and boldness.
- 3) Please pray that revival among Christians will develop into an awakening on campus.
- 4) Please pray for Christian staff, faculty, and administration.
- 5) Please pray for the power of the Holy Spirit to fall on campuses across the United States.



**This Campus Has NOT Been Adopted**

**Known Christian Groups on Campus:**

No Known Gospel Witness

DAY  
31



## **Mission Statement:**

“Danville Community College is committed to providing quality comprehensive higher education and workforce programs and services to promote student success and to enhance business and community development.”

