

Peninsular Florida District Council of the A.G. 31 Day Prayer Guide



Volume I

Dear Friends of Collegiate Student Ministry,

The document you have before you is the first of a four volume prayer guide targeted for the Peninsular Florida District Council of the A.G. (PenFlorida). The purpose of these prayer guides is simple. We want to put into as many hands as possible, tools to encourage and equip people to pray for college and universities across PenFlorida. Ultimately, it is our intention to provide every Assembly of God church in the USA, district by district, the opportunity and tools to pray for college students, staff and faculty.

We are praying for a move of God to shake our campuses, the likes of which we have not seen in our generation. We are believing for an out pouring of the Holy Spirit to grip the lives of men and women, young and old. Please believe with us as we move forward.

In these prayer guides, you will find statistics for each school in PenFlorida with a student population of over 300. The list is in alphabetical order and based on the information from the National Center for Education Statistics ([NCES](#)). We tried to provide you with enough information to make your prayers more precise, but not overwhelming. For example, each prayer guide has information on the known Christian groups on campus. When possible, we have supplied the names of the individual students who are listed as the “first contact” of each group.

Some schools do not show student leader’s names. When that happens, we have looked for the group’s faculty advisor. That name appears and is so marked. Often, we could not find a contact person at all. When that happened, we inserted a question mark.

Many schools have chaplains or spiritual life offices. Please pray for these men and women, that they too will be sensitive to the leading of the Holy Spirit. The Holy Spirit is not bound by denominations or back grounds. He is able to reach into the seeking heart.

As you pray, please remember to pray for the students who live in student housing. You will notice that each school listed below will have a spot to show whether they have student housing or not. A lot of really crazy stuff happens in dorms, especially co-ed dorms!

There is a section on each page titled prayer requests. Please see this as springboard to prayer. Allow the Holy Spirit to lead you beyond what has been recommended.

We have included a section on international students. We are using the [College Factual](#) website for all pertinent data. The international student information is under the “student Life” tab.

Finally, in addition to the data supplied from the National Center for Education Statistics ([NCES](#)), we have also accessed each school’s individual website. And, as mentioned earlier, we only included schools with a student population of over 300. But, each school listed does grant at least a 2yr Associate’s degree.

Thank you in advance, for investing time into this next generation. Only eternity will tell what we helped along and what we were able to hinder through our prayers.

Be Blessed,
Joe and Heidi Barrale
[Assemblies of God U.S. Missionaries](#)
[Chi Alpha](#) / [Adopt-A-Campus.org](#)

A List of Schools Included in this Prayer Guide

Day 1 Academy for Nursing and Health Occupations

Day 2 AdventHealth University

Day 3 AI Miami International University of Art and
Design

Day 4 Albizu University-Miami

Day 5 Altierus Career College-Tampa

Day 6 American Medical Academy

Day 7 Atlantis University

Day 8 Ave Maria University

Day 9 Barry University

Day 10 Beacon College

Day 11 Bethune-Cookman University

Day 12 Broward College

Day 13 Cambridge College of Healthcare & Technology

Day 14 Cambridge Institute of Allied Health &
Technology

Day 15 Chamberlain University-Florida

Day 16 College of Central Florida

Day 17 Concorde Career Institute-Jacksonville

Day 18 Concorde Career Institute-Miramar

Day 19 Concorde Career Institute-Tampa

Day 20 Daytona State College

Day 21 Eastern Florida State College

Day 22 Eckerd College

Day 23 Edward Waters University

Day 24 Embry-Riddle Aeronautical University

Daytona Beach

Day 25 Everglades University

Day 26 Flagler College

Day 27 Florida Atlantic University

Day 28 Florida Career College-Boynton Beach

Day 29 Florida Career College-Hialeah

Day 30 Florida Career College-Jacksonville

Day 31 Florida Career College-Lauderdale Lakes

Academy for Nursing and Health Occupations West Palm Beach, FL

Executive Director & President.....Lois M. Gackenheimer Richards
Type.....2-year Private Non-Profit
Campus HousingNo
Student Population.....703
Student-to-Faculty Ratio36 to 1
International Students.....0



Prayer Requests:

1. Please pray according to Luke 10.2 *"The harvest is plentiful, but the laborers are few; therefore beseech the Lord of the harvest to send out laborers into His harvest."*
2. Pray for unity within the Christian community on campuses,
3. Ask God to send a student awakening to our university campuses.
4. Pray that the Holy Spirit will bring conviction of "sin, righteousness and judgment" (Jn 16.8).
5. Pray for the school administrators, staff and faculty.
6. Pray for local churches to be involved in the lives of students, especially the community campuses and schools in small towns.



This Campus Has NOT Been Adopted
Known Christian Groups on Campus:
No Known Gospel Witness

DAY
1



Mission Statement:

"To teach underprivileged, unemployed and underemployed men and women of Palm Beach County the knowledge, skills, and competencies needed to be employed in the Healthcare Profession. Contributing Objectives: 1. To network with existing available resources in order to assist students in completing their education, and in obtaining and retaining employment. 2. To meet the employment needs of the healthcare community of Palm Beach County by contributing to a well-prepared workforce. 3. To offer healthcare employees continuing educational opportunities for upgrading knowledge, skills, and competencies in order to retain employment."



AdventHealth University

Orlando, FL



President..... Edwin I. Hernández
Type..... 4year, Private Non-Profit
Campus Housing Yes
Student Population 1,802
Student-to-Faculty Ratio 7 to 1
International Students (2019)..... 21 from at least 12 Countries.
Bahamas, Brazil, Canada, China, India, Jamaica, Nigeria,
Philippines, South Korea, United Kingdom, Venezuela, Vietnam.



Prayer Requests:

1. Please pray according to Luke 10.2 “The harvest is plentiful, but the laborers are few; therefore beseech the Lord of the harvest to send out laborers into His harvest.”
2. Pray for unity within the Christian community on campuses,
3. Ask God to send a student awakening to our university campuses.
4. Pray that the Holy Spirit will bring conviction of “sin, righteousness and judgment” (Jn 16.8).
5. Pray for the school administrators, staff and faculty.
6. Pray for local churches to be involved in the lives of students, especially the community campuses and schools in small towns.

This Campus Has NOT Been Adopted

Known Christian Groups on Campus:

Chaplain Reynold Acosta
Chaplain Niesha Steinke
Circle-up (daily prayer)..... Chaplains
Ecclesia (student-led Vespers, every Friday night.
Once a week prayer breakfast.

DAY
2



Mission Statement:

“AdventHealth University is a Seventh-day Adventist institution specializing in healthcare education in a faith-affirming environment. Service-oriented and guided by the values of nurture, excellence, spirituality, and stewardship, the University seeks to develop leaders who will practice healthcare as a ministry.”



AI Miami International University of Art and Design Miami, FL

President..... Leslie Baughman
Type..... 4-year, Private For-Profit
Campus Housing No
Student Population 934
Student-to-Faculty Ratio 17 to 1
“There are approximately 340 international students at International Fine Arts College; they make up 24.6% of all total students.”



Prayer Requests:

1. Please pray according to Luke 10.2 “The harvest is plentiful, but the laborers are few; therefore beseech the Lord of the harvest to send out laborers into His harvest.”
2. Pray for unity within the Christian community on campuses,
3. Ask God to send a student awakening to our university campuses.
4. Pray that the Holy Spirit will bring conviction of “sin, righteousness and judgment” (Jn 16.8).
5. Pray for the school administrators, staff and faculty.
6. Pray for local churches to be involved in the lives of students, especially the community campuses and schools in small towns.



This Campus Has NOT Been Adopted

Known Christian Groups on Campus:

No Known Gospel Witness

DAY

3



Mission Statement:

“Miami International University of Art & Design is a multi-campus, career-oriented institution that provides students with academic preparation and practical skills through programs in the applied arts and design industries. The institution prepares its undergraduate students for entry-level positions and its graduate students for advancement in their chosen fields. The University is dedicated to fostering a culture that encourages creativity, research, and learning-centered endeavors.”



Albizu University-Miami
Miami, FL

Chancellor Tilokie Depoo
Type..... 4-year, Private Non-Profit
Campus Housing No
Student Population 802
Student-to-Faculty Ratio 12 to 1
“There are approximately 28 international students at Carlos Albizu University - Miami; they make up 3.8% of all total students.”



Prayer Requests:

1. Please pray according to Luke 10.2 “The harvest is plentiful, but the laborers are few; therefore beseech the Lord of the harvest to send out laborers into His harvest.”
2. Pray for unity within the Christian community on campuses,
3. Ask God to send a student awakening to our university campuses.
4. Pray that the Holy Spirit will bring conviction of “sin, righteousness and judgment” (Jn 16.8).
5. Pray for the school administrators, staff and faculty.
6. Pray for local churches to be involved in the lives of students, especially the community campuses and schools in small towns.



This Campus Has NOT been Adopted
Known Christian Groups on Campus:
Catholic Club Anabel Jabiles

DAY
4



Mission Statement:

“Albizu University educates professionals in behavioral sciences, speech pathology and other disciplines, committed to research, to improve quality of life, and to serve diverse communities.”



Altierus Career College-Tampa

Tampa, FL

Campus Director Timothy Dengler
Type..... 2-year, Private Non-Profit
Campus Housing No
Student Population 397
Student-to-Faculty Ratio 21 to 1
International Students..... 0



Prayer Requests:

1. Please pray according to Luke 10.2 “The harvest is plentiful, but the laborers are few; therefore beseech the Lord of the harvest to send out laborers into His harvest.”
2. Pray for unity within the Christian community on campuses,
3. Ask God to send a student awakening to our university campuses.
4. Pray that the Holy Spirit will bring conviction of “sin, righteousness and judgment” (Jn 16.8).
5. Pray for the school administrators, staff and faculty.
6. Pray for local churches to be involved in the lives of students, especially the community campuses and schools in small towns.



This Campus Has NOT Been Adopted

Known Christian Groups on Campus:

No Known Gospel Witness

DAY

5



Mission Statement:

“The mission of the College is to prepare students to enter, prosper in, and meet the needs of the employment community served. To accomplish this purpose, the College offers a variety of career-oriented instructional programs and academic counseling services. The College believes that preparing students for participation in the working community is an important mission and a service to society. The College is dedicated to the ideal that all students should have the opportunity to reach their full potential. The College is concerned with developing, in all students, the quest for knowledge and skills necessary for life-long learning in their chosen field.”



American Medical Academy

Miami, FL



President Angie Gutierrez
Type 4-year, Private For-Profit
Campus Housing No
Student Population..... 527
Student-to-Faculty Ratio 6 to 1
International Students 0



This Campus Has NOT Been Adopted

Known Christian Groups on Campus

No Known Gospel Witness

DAY

6



YOUR FUTURE, OUR FOCUS:

“AMA has quickly developed a reputation for high quality education, through modern educational methodologies by incorporating web-based technology and study material. Offering student[s] a non- traditional approach to education. Today, AMA has over 400 students from all diverse backgrounds and offers programs in EMS (EMT- Basic, Paramedic and Associates Degree in EMS) and Associates Degree in Nursing.”

Prayer Requests:

1. Please pray according to Luke 10.2 “The harvest is plentiful, but the laborers are few; therefore beseech the Lord of the harvest to send out laborers into His harvest.”
2. Pray for unity within the Christian community on campuses,
3. Ask God to send a student awakening to our university campuses.
4. Pray that the Holy Spirit will bring conviction of “sin, righteousness and judgment” (Jn 16.8).
5. Pray for the school administrators, staff and faculty.
6. Pray for local churches to be involved in the lives of students, especially the community campuses and schools in small towns.



Atlantis University

Miami, FL

President..... Unavailable
Type 4-year, Private For-Profit
Campus Housing No
Student Population 550
Student-to-Faculty Ratio 25 to 1
“There are approximately 107 [international](#) students at Atlantis University; they make up 31.4% of all total students.”



This Campus Has Not Been Adopted

Known Christian Groups on Campus:

No Known Gospel Witness

DAY

7



Mission Statement:

“Atlantis University is a private institution of higher learning that provides career-minded students with a quality education that encourages both professional and personal development.”

Prayer Requests:

1. Please pray according to Luke 10.2 “The harvest is plentiful, but the laborers are few; therefore beseech the Lord of the harvest to send out laborers into His harvest.”
2. Pray for unity within the Christian community on campuses,
3. Ask God to send a student awakening to our university campuses.
4. Pray that the Holy Spirit will bring conviction of “sin, righteousness and judgment” (Jn 16.8).
5. Pray for the school administrators, staff and faculty.
6. Pray for local churches to be involved in the lives of students, especially the community campuses and schools in small towns.



Ave Maria University

Ave Maria, FL

PresidentMark Middendorf
Type4-year Private Non-Profit
Campus Housing..... Yes
Student Population.....1,108
Student-to-Faculty Ratio.....13 to 1
International Students (2019)25 from at least 12 Countries.
Brazil, Canada, Colombia, Ecuador, Germany, India, Italy,
Malaysia, Philippines, Spain, United Kingdom, Venezuela.



This Campus Has NOT Been Adopted

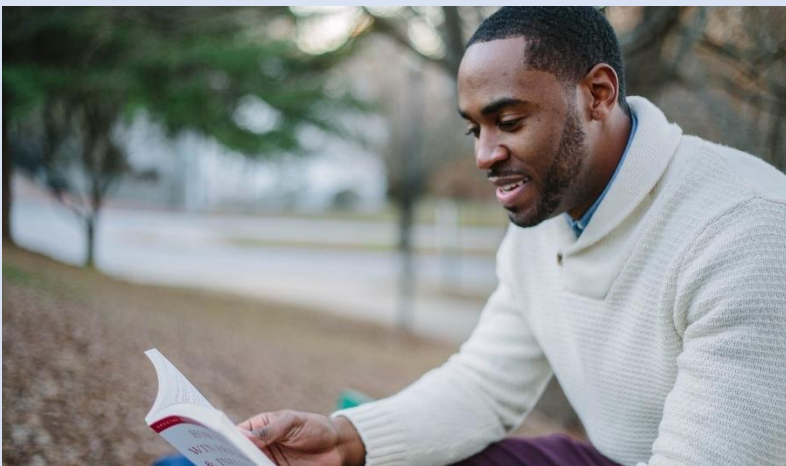
Known Christian Groups on Campus:

Campus Ministry

Director Fr. Rick Martignetti
Director of Mission Outreach Kerry Estes
Spiritual Director..... Fr. Joseph Lugalambu
Spiritual Director..... Fr. Eamon McManus
Spiritual Director..... Fr. Romanus Cessario
Spiritual Director..... Fr. Robert Garrity
Spiritual Director..... Fr. Guy Mansini

Mission Statement:

“Founded in fidelity to Christ and His Church in response to the call of Vatican II for greater lay witness in contemporary society, Ave Maria University exists to further teaching, research, and learning at the undergraduate and graduate levels in the abiding tradition of Catholic thought in both national and international settings. The University takes as its mission the sponsorship of a liberal arts education curriculum dedicated, as articulated in the apostolic constitution Ex Corde Ecclesiae, to the advancement of human culture, the promotion of dialogue between faith and reason, the formation of men and women in the intellectual and moral virtues of the Catholic faith, and to the development of professional and pre-professional programs in response to local and societal needs...”



Prayer Requests:

1. Please pray according to Luke 10.2 “The harvest is plentiful, but the laborers are few; therefore beseech the Lord of the harvest to send out laborers into His harvest.”
2. Pray for unity within the Christian community on campuses,
3. Ask God to send a student awakening to our university campuses.
4. Pray that the Holy Spirit will bring conviction of “sin, righteousness and judgment” (Jn 16.8).
5. Pray for the school administrators, staff and faculty.
6. Pray for local churches to be involved in the lives of students, especially the community campuses and schools in small towns.



DAY

8

Barry University

Miami, FL

President..... Mike Allen
Type..... 4-year, Private Non-Profit
Campus Housing Yes
Student Population 7,515
Student-to-Faculty Ratio 15 to 1
International Students (2019)..... 425 from at least 35 Countries.

Australia, Bahamas, Bangladesh, Brazil, Canada, China, Colombia, Ecuador, France, Germany, Ghana, Hong Kong, India, Italy, Jamaica, Japan, Kenya, Kuwait, Mexico, Netherlands, Nigeria, Norway, Peru, Russia, Saudi Arabia, South Korea, Spain, Sweden, Taiwan, Thailand, Turkey, United Arab Emirates, United Kingdom, Venezuela, Vietnam.



Prayer Requests:

1. Please pray according to Luke 10.2 “The harvest is plentiful, but the laborers are few; therefore beseech the Lord of the harvest to send out laborers into His harvest.”
2. Pray for unity within the Christian community on campuses,
3. Ask God to send a student awakening to our university campuses.
4. Pray that the Holy Spirit will bring conviction of “sin, righteousness and judgment” (Jn 16.8).
5. Pray for the school administrators, staff and faculty.
6. Pray for local churches to be involved in the lives of students, especially the community campuses and schools in small towns.



This Campus Has NOT Been Adopted

Known Christian Groups on Campus:

Campus Ministry

Director..... Karen J. Stalnaker
University Chaplain..... Fr. Cristobal Torres
Coordinator of Worship & Music
..... Hamilton Gutierrez

DAY
9



Mission Statement:

“A Catholic institution of higher education, Barry University was founded in 1940 by the Adrian Dominican Sisters. Grounded in the liberal arts tradition, we are a scholarly community committed to the highest academic standards in undergraduate, graduate, and professional education...”



Beacon College Leesburg, FL

President.....George Hagerty
Type4-year, Private Non-Profit
Campus Housing.....Yes
Student Population.....427
Student-to-Faculty Ratio.....11 to 1
International Students (2019).....6 from at least 5 Countries.
Bahamas, Canada, Netherlands, Nigeria, United Kingdom.



Prayer Requests:

1. Please pray according to Luke 10.2 “The harvest is plentiful, but the laborers are few; therefore beseech the Lord of the harvest to send out laborers into His harvest.”
2. Pray for unity within the Christian community on campuses,
3. Ask God to send a student awakening to our university campuses.
4. Pray that the Holy Spirit will bring conviction of “sin, righteousness and judgment” (Jn 16.8).
5. Pray for the school administrators, staff and faculty.
6. Pray for local churches to be involved in the lives of students, especially the community campuses and schools in small towns.



This Campus Has NOT Been Adopted

Known Christian Groups on Campus:

No Known Gospel Witness

DAY
10



Mission Statement:

“Beacon College is an accredited, liberal arts institution of higher education, which uniquely serves the educational needs of students with Learning Disabilities, Attention Deficit Hyperactivity Disorder and other Learning Differences.”



Bethune-Cookman University

Daytona Beach, FL



Interim President.....Hiram Powell
Type4-year, Private Non-Profit
Campus Housing.....Yes
Student Population2,845
Student-to-Faculty Ratio.....15 to 1
“There are approximately 68 international students at Bethune - Cookman University; they make up 1.8% of all total students.”



Prayer Requests:

1. Please pray according to Luke 10.2 “The harvest is plentiful, but the laborers are few; therefore beseech the Lord of the harvest to send out laborers into His harvest.”
2. Pray for unity within the Christian community on campuses,
3. Ask God to send a student awakening to our university campuses.
4. Pray that the Holy Spirit will bring conviction of “sin, righteousness and judgment” (Jn 16.8).
5. Pray for the school administrators, staff and faculty.
6. Pray for local churches to be involved in the lives of students, especially the community campuses and schools in small towns.

This Campus Has NOT Been Adopted

Known Christian Groups on Campus:

University Chaplain & Director of Religious Life

..... Kenya M. Lovell
Wildcat Worship Team..... ?

DAY

11



Mission Statement:

“The mission of Bethune-Cookman University is to educate a diverse community of learners to become responsible, productive citizens and solution seekers through the promotion of faith, scholarship, creative endeavors, leadership and service.”



Broward College Fort Lauderdale, FL



This Campus Has NOT Been Adopted

Known Christian Groups on Campus:

Campus Christian Ministries (Central)..... Dorothy Easley (Advisor)
Campus Christian Ministries (North) Christina Wright (Advisor)

DAY
12

PresidentGregory Adam Haile
Type4-year, Public
Campus Housing.....No
Student Population.....33,243
Student-to-Faculty Ratio.....26 to 1
“There are approximately 1,937 international students at Broward College; they make up 4.7% of all total students.”

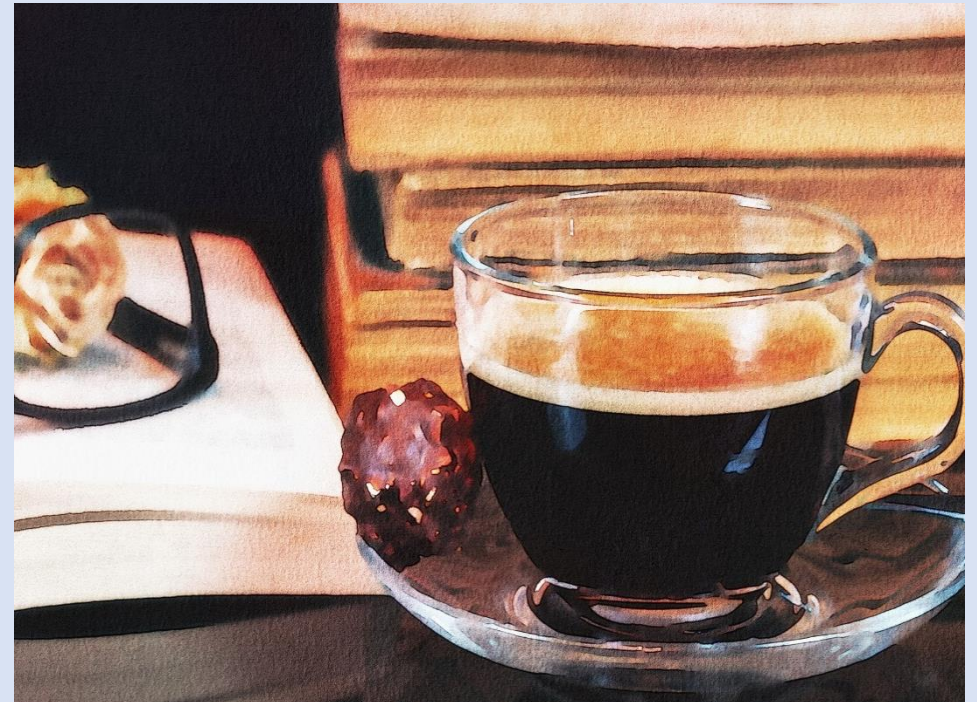


STUDENT SUCCESS IS OUR PASSION

“Our mission at Broward College is *Transforming students’ lives and enriching our diverse community through academic excellence, innovation, and meaningful career opportunities.*”

Prayer Requests:

1. Please pray according to Luke 10.2 “The harvest is plentiful, but the laborers are few; therefore beseech the Lord of the harvest to send out laborers into His harvest.”
2. Pray for unity within the Christian community on campuses,
3. Ask God to send a student awakening to our university campuses.
4. Pray that the Holy Spirit will bring conviction of “sin, righteousness and judgment” (Jn 16.8).
5. Pray for the school administrators, staff and faculty.
6. Pray for local churches to be involved in the lives of students, especially the community campuses and schools in small towns.



Cambridge College of Healthcare & Technology Delray Beach, FL

Chancellor & CEO.....Terrence LaPier
Type2-year, Private For-Profit
Campus Housing.....No
Student Population654
Student-to-Faculty Ratio.....25 to 1
International Students0



Prayer Requests:

1. Please pray according to Luke 10.2 “The harvest is plentiful, but the laborers are few; therefore beseech the Lord of the harvest to send out laborers into His harvest.”
2. Pray for unity within the Christian community on campuses,
3. Ask God to send a student awakening to our university campuses.
4. Pray that the Holy Spirit will bring conviction of “sin, righteousness and judgment” (Jn 16.8).
5. Pray for the school administrators, staff and faculty.
6. Pray for local churches to be involved in the lives of students, especially the community campuses and schools in small towns.



This Campus Has NOT Been Adopted

Known Christian Groups on Campus:

No Known Gospel Witness

DAY
13



Mission Statement:

“Cambridge College of Healthcare & Technology is a private, academic and student-centered institution of higher education that is dedicated to providing excellent pedagogical teaching and hands on training to traditional and nontraditional students. With Cambridge’s significant history, the emphasis on an outstanding student culture continues with focusing on in demand programs, dynamic curriculum, general education skills and a strong commitment to being a leader in the field of career-focused education.”



Cambridge Institute of Allied Health & Technology Altamonte Springs, FL



This Campus Has NOT Been Adopted
Known Christian Groups on Campus:
No Known Gospel Witness

DAY
14

Chancellor & CEO Terrence LaPier
Type..... 2-year, Private For-Profit
Campus Housing No
Student Population 377
Student-to-Faculty Ratio 25 to 1
International Students..... 0



Prayer Requests:

1. Please pray according to Luke 10.2 “The harvest is plentiful, but the laborers are few; therefore beseech the Lord of the harvest to send out laborers into His harvest.”
2. Pray for unity within the Christian community on campuses,
3. Ask God to send a student awakening to our university campuses.
4. Pray that the Holy Spirit will bring conviction of “sin, righteousness and judgment” (Jn 16.8).
5. Pray for the school administrators, staff and faculty.
6. Pray for local churches to be involved in the lives of students, especially the community campuses and schools in small towns.

Mission Statement:

“Cambridge College of Healthcare & Technology is a private, academic and student-centered institution of higher education that is dedicated to providing excellent pedagogical teaching and hands on training to traditional and nontraditional students. With Cambridge’s significant history, the emphasis on an outstanding student culture continues with focusing on in demand programs, dynamic curriculum, general education skills and a strong commitment to being a leader in the field of career-focused education.”



Chamberlain University-Florida

Jacksonville, FL

President Karen Cox
Type 4-year, Private For-Profit
Campus Housing No
Student Population 1,084
Student-to-Faculty Ratio 10 to 1
International Students 0



This Campus Has NOT Been Adopted

Known Christian Groups on Campus:

No Known Gospel Witness

DAY
15



Mission Statement:

“To educate, empower and embolden diverse healthcare professionals who advance the health of people, families, communities and nations.”

Prayer Requests:

1. Please pray according to Luke 10.2 “The harvest is plentiful, but the laborers are few; therefore beseech the Lord of the harvest to send out laborers into His harvest.”
2. Pray for unity within the Christian community on campuses,
3. Ask God to send a student awakening to our university campuses.
4. Pray that the Holy Spirit will bring conviction of “sin, righteousness and judgment” (Jn 16.8).
5. Pray for the school administrators, staff and faculty.
6. Pray for local churches to be involved in the lives of students, especially the community campuses and schools in small towns.



College of Central Florida

Ocala, FL



This Campus Has NOT Been Adopted

Known Christian Groups on Campus:

Realizing Our Cause Brandy Currie (Advisor)

DAY
16

President James Henningsen

Type 4-year, Public

Campus Housing No

Student Population 6,150

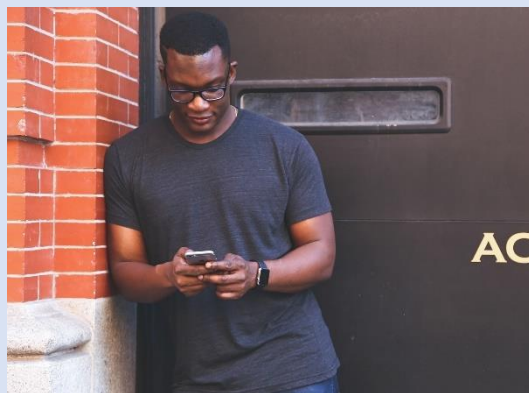
Student-to-Faculty Ratio 19 to 1

“There are approximately 116 international students at College of Central Florida; they make up 1.7% of all total students.”

***Additional Locations:**

Citrus Campus, Lecanto, FL

Levy Campus, Chiefland, FL



Mission Statement:

“We transform lives and enrich our community by providing a supportive, high-quality learning environment that prepares individuals to excel in work and life.”

Prayer Requests:

1. Please pray according to Luke 10.2 “The harvest is plentiful, but the laborers are few; therefore beseech the Lord of the harvest to send out laborers into His harvest.”
2. Pray for unity within the Christian community on campuses,
3. Ask God to send a student awakening to our university campuses.
4. Pray that the Holy Spirit will bring conviction of “sin, righteousness and judgment” (Jn 16.8).
5. Pray for the school administrators, staff and faculty.
6. Pray for local churches to be involved in the lives of students, especially the community campuses and schools in small towns.



Concorde Career Institute-Jacksonville

Jacksonville, FL

Campus PresidentNed Snyder, Jr.
Type2-year, Private For-Profit
Campus Housing.....No
Student Population.....555
Student-to-Faculty Ratio.....23 to 1
International Students0



Prayer Requests:

1. Please pray according to Luke 10.2 “The harvest is plentiful, but the laborers are few; therefore beseech the Lord of the harvest to send out laborers into His harvest.”
2. Pray for unity within the Christian community on campuses,
3. Ask God to send a student awakening to our university campuses.
4. Pray that the Holy Spirit will bring conviction of “sin, righteousness and judgment” (Jn 16.8).
5. Pray for the school administrators, staff and faculty.
6. Pray for local churches to be involved in the lives of students, especially the community campuses and schools in small towns.



This Campus Has NOT Been Adopted
Known Christian Groups on Campus:
No Known Gospel Witness

DAY
17



Mission Statement:

“Concorde Career Colleges prepares committed students for successful employment in a rewarding health care profession through high-caliber training, real world experience and student-centered support.”



Concorde Career Institute-Miramar

Miramar, FL



This Campus Has NOT Been Adopted

Known Christian Groups on Campus:
No Known Gospel Witness

DAY
18

Interim Campus President.....Cynthia Quiñones
Type2-year, Private For-Profit
Campus Housing.....No
Student Population.....434
Student-to-Faculty Ratio.....33 to 1
International Students0

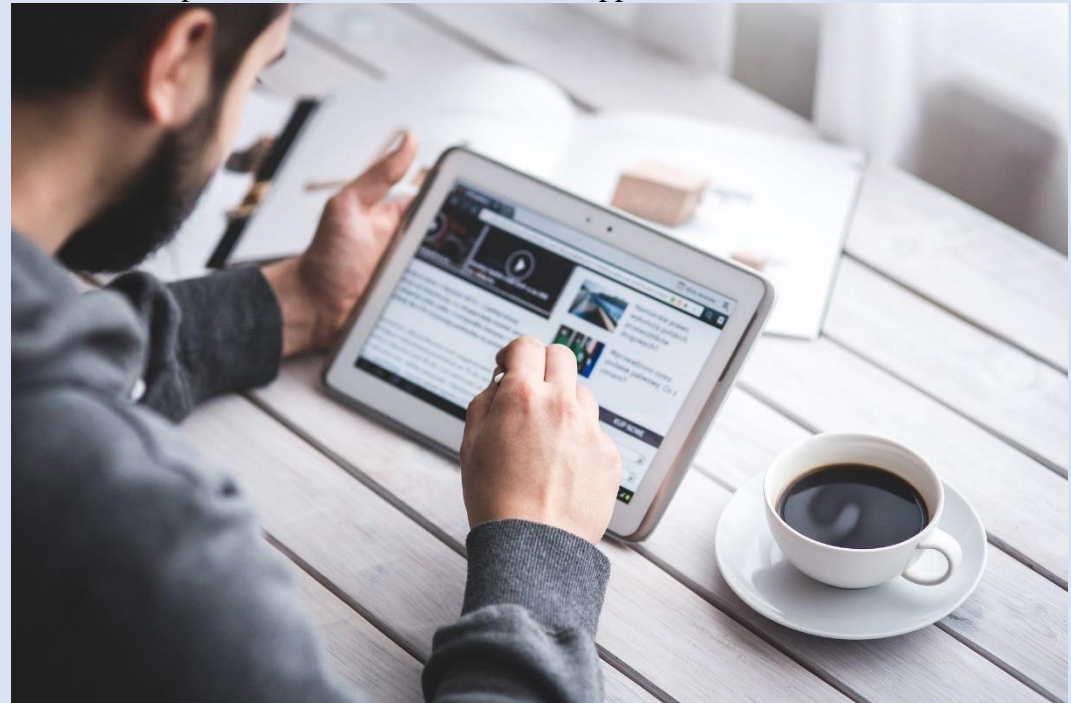


Mission Statement:

“Concorde Career Colleges prepares committed students for successful employment in a rewarding health care profession through high-caliber training, real world experience and student-centered support.”

Prayer Requests:

1. Please pray according to Luke 10.2 “The harvest is plentiful, but the laborers are few; therefore beseech the Lord of the harvest to send out laborers into His harvest.”
2. Pray for unity within the Christian community on campuses,
3. Ask God to send a student awakening to our university campuses.
4. Pray that the Holy Spirit will bring conviction of “sin, righteousness and judgment” (Jn 16.8).
5. Pray for the school administrators, staff and faculty.
6. Pray for local churches to be involved in the lives of students, especially the community campuses and schools in small towns.



Concorde Career Institute-Tampa

Tampa, FL



This Campus Has NOT Been Adopted

Known Christian Groups on Campus:

No Known Gospel Witness

DAY
19

Campus President..... Debra Weninger
Type..... 2-year, Private For-Profit
Campus Housing No
Student Population 405
Student-to-Faculty Ratio 37 to 1
International Students..... 0



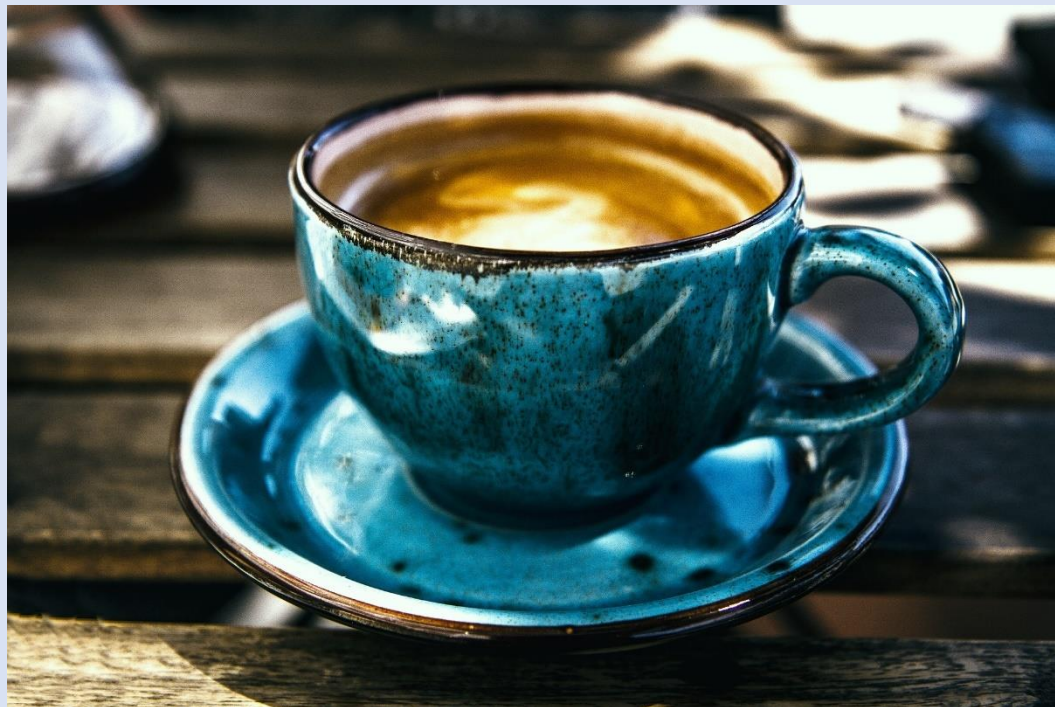
Prayer Requests:

1. Please pray according to Luke 10.2 “The harvest is plentiful, but the laborers are few; therefore beseech the Lord of the harvest to send out laborers into His harvest.”
2. Pray for unity within the Christian community on campuses,
3. Ask God to send a student awakening to our university campuses.
4. Pray that the Holy Spirit will bring conviction of “sin, righteousness and judgment” (Jn 16.8).
5. Pray for the school administrators, staff and faculty.
6. Pray for local churches to be involved in the lives of students, especially the community campuses and schools in small towns.



Mission Statement:

“Concorde Career Colleges prepares committed students for successful employment in a rewarding health care profession through high-caliber training, real world experience and student-centered support.”



Daytona State College

Daytona Beach, FL

President.....Thomas LoBasso
Type4-year, Public
Campus Housing.....No
Student Population.....12,728
Student-to-Faculty Ratio.....19 to 1
“There are approximately 33 international students at Daytona State College; they make up 0.2% of all total students.”



Prayer Requests:

1. Please pray according to Luke 10.2 “The harvest is plentiful, but the laborers are few; therefore beseech the Lord of the harvest to send out laborers into His harvest.”
2. Pray for unity within the Christian community on campuses,
3. Ask God to send a student awakening to our university campuses.
4. Pray that the Holy Spirit will bring conviction of “sin, righteousness and judgment” (Jn 16.8).
5. Pray for the school administrators, staff and faculty.
6. Pray for local churches to be involved in the lives of students, especially the community campuses and schools in small towns.



This Campus Has NOT Been Adopted

DAY
20

Known Christian Groups on Campus:

Baptist Collegiate Ministries..... Vickie Brown (Advisor)
Campus Crusade for Christ..... ?
InterVarsity ?



Mission Statement:

“Daytona State College, a comprehensive public college, provides access to a range of flexible programs, from community enrichment to the baccalaureate degree, emphasizing student success, embracing excellence and diversity, as well as fostering innovation to enhance teaching and learning.”



Eastern Florida State College Cocoa, FL



This Campus Has NOT Been Adopted

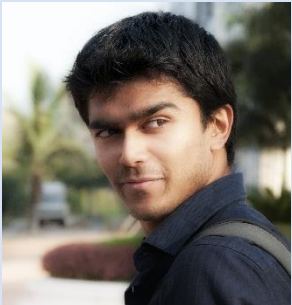
Known Christian Groups on Campus:
CRU..... Anastasia Harris

DAY
21

President.....James H. Richey
Type4-year, Public
Campus Housing.....Yes
Student Population.....13,937
Student-to-Faculty Ratio.....17 to 1
“There are approximately 175 international students at Eastern Florida State College; they make up 1.1% of all total students.”

***Additional Locations:**

Melbourne, FL
Palm Bay, FL
Titusville, FL



Prayer Requests:

1. Please pray according to Luke 10.2 “The harvest is plentiful, but the laborers are few; therefore beseech the Lord of the harvest to send out laborers into His harvest.”
2. Pray for unity within the Christian community on campuses,
3. Ask God to send a student awakening to our university campuses.
4. Pray that the Holy Spirit will bring conviction of “sin, righteousness and judgment” (Jn 16.8).
5. Pray for the school administrators, staff and faculty.
6. Pray for local churches to be involved in the lives of students, especially the community campuses and schools in small towns.



Mission Statement:

“Eastern Florida State College is committed to engaging our diverse population in quality, accessible learning opportunities that successfully meet individual and community needs.”



Eckerd College Saint Petersburg, FL



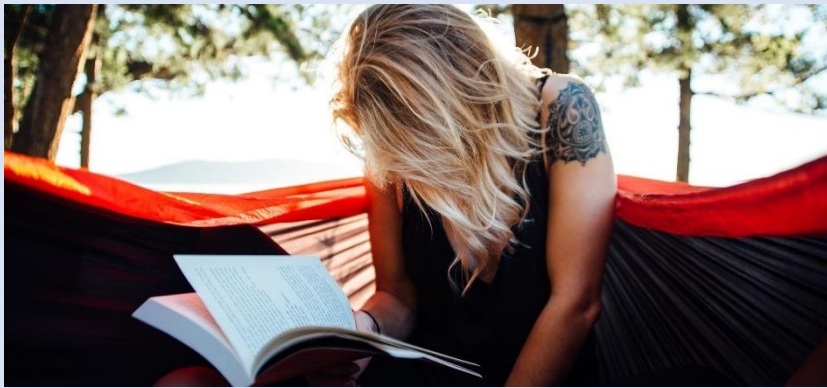
This Campus Has NOT Been Adopted

Known Christian Groups on Campus:

DAY
22

President..... Damián J. Fernández
Type 4-year, Private Non-Profit
Campus Housing..... Yes
Student Population 1,822
Student-to-Faculty Ratio..... 12 to 1
International Students (2019)..... 84 from at least 28 Countries.

Australia, Bahamas, Brazil, Canada, China, Colombia, Egypt, France, Germany, Ghana, India, Indonesia, Israel, Italy, Japan, Mexico, Netherlands, Nigeria, Pakistan, Peru, South Korea, Spain, Sri Lanka, Sweden, Taiwan, Turkey, United Kingdom, Venezuela.



Prayer Requests:

1. Please pray according to Luke 10.2 “The harvest is plentiful, but the laborers are few; therefore beseech the Lord of the harvest to send out laborers into His harvest.”
2. Pray for unity within the Christian community on campuses,
3. Ask God to send a student awakening to our university campuses.
4. Pray that the Holy Spirit will bring conviction of “sin, righteousness and judgment” (Jn 16.8).
5. Pray for the school administrators, staff and faculty.
6. Pray for local churches to be involved in the lives of students, especially the community campuses and schools in small towns.

Religious Life

Chaplain Douglas McMahon Jr.

Catholic Campus Ministries Fr. Stephan Brown

Student Group

InterVarsity ?



Mission Statement:

“The mission of Eckerd College is to provide excellent, innovative undergraduate liberal arts education and lifelong learning programs in the unique Florida environment, within the context of a covenant relationship with the Presbyterian Church (USA).”



Edward Waters University

Jacksonville, FL



This Campus Has NOT Been Adopted

Known Christian Groups on Campus:
Director of Campus Ministry...Jared Williams

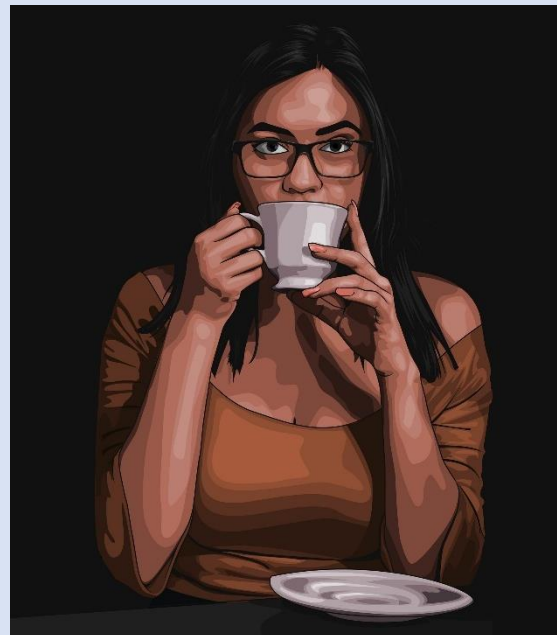
DAY
23

President..... A. Zachary Faison, Jr.
Type 4-year, Private Non-Profit
Campus Housing Yes
Student Population 2,273
Student-to-Faculty Ratio 17 to 1
“Edward Waters College was (2019) home to approximately 4
[international](#) students...[from] the Bahamas, Venezuela, and Canada.”



Prayer Requests:

1. Please pray according to Luke 10.2 “The harvest is plentiful, but the laborers are few; therefore beseech the Lord of the harvest to send out laborers into His harvest.”
2. Pray for unity within the Christian community on campuses,
3. Ask God to send a student awakening to our university campuses.
4. Pray that the Holy Spirit will bring conviction of “sin, righteousness and judgment” (Jn 16.8).
5. Pray for the school administrators, staff and faculty.
6. Pray for local churches to be involved in the lives of students, especially the community campuses and schools in small towns.



Mission Statement:

“Edward Waters University is a Christian, Historically Black, urban liberal arts institution that offers quality academic programs. The University strives to prepare students holistically to advance in a global society through the provision of intellectually stimulating programs, and an environment that emphasizes high moral and spiritual values in keeping with the African Methodist Episcopal Church. Edward Waters University seeks to develop excellence in scholarship, research and service for the betterment of humanity.”

Embry-Riddle Aeronautical University

Daytona Beach

Daytona Beach, FL



This Campus Has NOT Been Adopted

Known Christian Groups on Campus:

ChaplainDavid Keck

Student Organization information was unavailable

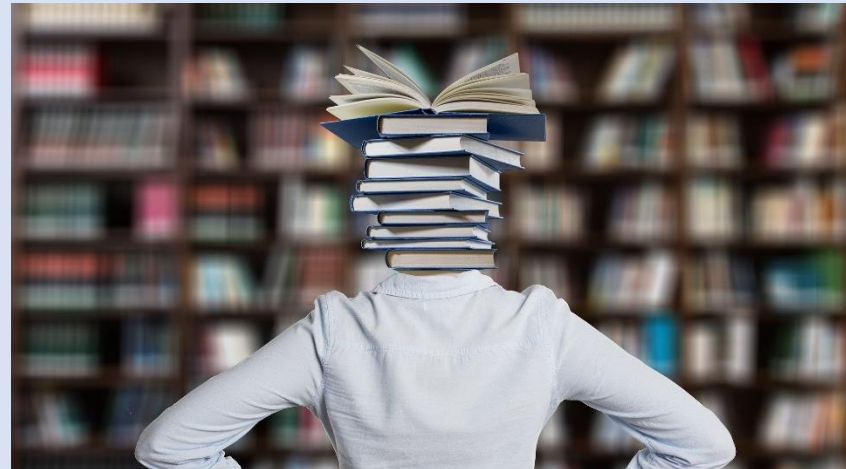
DAY
24

President.....P. Barry Butler
Type4-year, Private Non-Profit
Campus Housing.....Yes
Student Population.....8,797
Student-to-Faculty Ratio.....18 to 1
“There are approximately 1,115 [international](#) students at Embry-Riddle
Daytona Beach; they make up 16.9% of all total students.”



Prayer Requests:

1. Please pray according to Luke 10.2 “The harvest is plentiful, but the laborers are few; therefore beseech the Lord of the harvest to send out laborers into His harvest.”
2. Pray for unity within the Christian community on campuses,
3. Ask God to send a student awakening to our university campuses.
4. Pray that the Holy Spirit will bring conviction of “sin, righteousness and judgment” (Jn 16.8).
5. Pray for the school administrators, staff and faculty.
6. Pray for local churches to be involved in the lives of students, especially the community campuses and schools in small towns.



Mission Statement:

“Embry-Riddle Aeronautical University is the world leader in aviation and aerospace higher education. Our mission is to teach the science, practice and business necessary to prepare students for productive careers and leadership roles in business, government agencies and the military. Embry-Riddle’s reputation as a leader in aviation and aerospace higher education is grounded in its aviation roots dating back to 1926.”



Everglades University

Boca Raton, FL



This Campus Has NOT Been Adopted

Known Christian Groups on Campus:

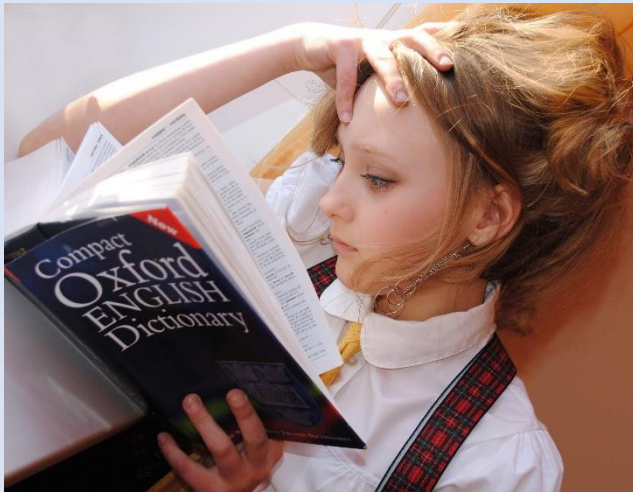
No Known Gospel Witness

DAY
25

President/CEO Kristi L. Mollis
Type 4-year, Private Non-Profit
Campus Housing No
Student Population..... 2,247
Student-to-Faculty Ratio 16 to 1
“Everglades U was home [2019] to approximately 2 [international](#) students.”

***Additional Locations**

Miami Campus
Tampa Campus
Orlando Campus
Sarasota Campus



Mission Statement:

“The mission of Everglades University is to provide quality education to adult learners of diverse backgrounds in a collaborative environment where each individual has the opportunity to achieve personal growth. The University seeks to accomplish its mission by combining small class sizes and innovative programs with traditional academic values. The University supports the academic endeavor and service, to deliver graduate and undergraduate programs both on campus and online.”

Prayer Requests:

1. Please pray according to Luke 10.2 “The harvest is plentiful, but the laborers are few; therefore beseech the Lord of the harvest to send out laborers into His harvest.”
2. Pray for unity within the Christian community on campuses,
3. Ask God to send a student awakening to our university campuses.
4. Pray that the Holy Spirit will bring conviction of “sin, righteousness and judgment” (Jn 16.8).
5. Pray for the school administrators, staff and faculty.
6. Pray for local churches to be involved in the lives of students, especially the community campuses and schools in small towns.



Flagler College Saint Augustine, FL

President..... John A. Delaney
Type..... 4-year, Private Non-Profit
Campus Housing Yes
Student Population 2,687
Student-to-Faculty Ratio 16 to 1
“There are approximately 116 international students at Flagler St. Augustine; they make up 4.4% of all total students.”

***Additional Location**

Tallahassee Campus



Prayer Requests:

1. Please pray according to Luke 10.2 “The harvest is plentiful, but the laborers are few; therefore beseech the Lord of the harvest to send out laborers into His harvest.”
2. Pray for unity within the Christian community on campuses,
3. Ask God to send a student awakening to our university campuses.
4. Pray that the Holy Spirit will bring conviction of “sin, righteousness and judgment” (Jn 16.8).
5. Pray for the school administrators, staff and faculty.
6. Pray for local churches to be involved in the lives of students, especially the community campuses and schools in small towns.



This Campus Has NOT Been Adopted

Known Christian Groups on Campus:

CRU?
Campus to City Wesley Foundation?
Catholic College Fellowship?

DAY
26



Mission Statement:

“Flagler College offers an exceptional education through a challenging, inclusive, and supportive academic community integrated with the thriving culture and history of this unique place, St. Augustine. We foster intellectual, social, and personal transformation in our students. We prepare them for a diverse world that will always need discerning individuals, responsible citizens, and visionary leaders. The College is committed to the preservation of the former Hotel Ponce de Leon and other historic structures that grace its campus.”



Florida Atlantic University

Boca Raton, FL



President John Kelly
Type 4-year, Public
Campus Housing Yes
Student Population 30,805
Student-to-Faculty Ratio 22 to 1
International Students (2019) 1,194 from at least 48 Countries.

Australia, Bahamas, Bangladesh, Brazil, Canada, China, Colombia, Ecuador, Egypt, France, Germany, Ghana, Greece, Hong Kong, India, Indonesia, Iran, Israel, Italy, Jamaica, Japan, Jordan, Kenya, Kuwait, Malaysia, Mexico, Nepal, Netherlands, Nigeria, Norway, Oman, Pakistan, Peru, Philippines, Russia, Saudi Arabia, South Korea, Spain, Sri Lanka, Sweden, Taiwan, Thailand, Turkey, Ukraine, United Arab Emirates, United Kingdom, Venezuela, Vietnam.

***Additional Locations**

Dania Beach, FL
Davie, FL
Fort Lauderdale, FL
Harbor Branch, Fort Pierce, FL
John D. MacArthur Campus at Jupiter, FL



Prayer Requests:

1. Please pray according to Luke 10.2 “The harvest is plentiful, but the laborers are few; therefore beseech the Lord of the harvest to send out laborers into His harvest.”
2. Pray for unity within the Christian community on campuses,
3. Ask God to send a student awakening to our university campuses.
4. Pray that the Holy Spirit will bring conviction of “sin, righteousness and judgment” (Jn 16.8).
5. Pray for the school administrators, staff and faculty.
6. Pray for local churches to be involved in the lives of students, especially the community campuses and schools in small towns.

This Campus Has NOT Been Adopted

Known Christian Groups on Campus:

Black Campus Ministries Rachel Goff
Black Sister in Christ Alani Valdez
Calvary FAU Noah Brown
CRU Knox Johnson
Catholic Newman Club Raphael Robles-Rivera
Devoted Marissa Shank
Equipped Sisters in Christ Bri Wiggins
Living Water Chinese Bible Study Enze Qian
MacArthur Campus Catholic Newman Johann Cifuentes
Nurses Christian Fellowship Caroline Brodi
Reformed University Fellowship Jeff Lee

DAY
27



Mission Statement:

“Florida Atlantic University is a multi-campus public research university that pursues excellence in its missions of research, scholarship, creative activity, teaching, and active engagement with its communities.”



Florida Career College Boynton Beach Boynton Beach, FL

Regional Vice President Operations.....Tim Moscato
Campus President / Executive Director.....Aaron Morris
Type2-year, Private For-Profit
Campus Housing.....No
Student Population.....681
Student-to-Faculty Ratio.....15 to 1
International Students0



Prayer Requests:

1. Please pray according to Luke 10.2 “The harvest is plentiful, but the laborers are few; therefore beseech the Lord of the harvest to send out laborers into His harvest.”
2. Pray for unity within the Christian community on campuses,
3. Ask God to send a student awakening to our university campuses.
4. Pray that the Holy Spirit will bring conviction of “sin, righteousness and judgment” (Jn 16.8).
5. Pray for the school administrators, staff and faculty.
6. Pray for local churches to be involved in the lives of students, especially the community campuses and schools in small towns.



This Campus Has NOT Been Adopted

Known Christian Groups on Campus:

No Known Gospel Witness

DAY
28



Mission Statement:

“Driving personal and community transformation by empowering students to make a positive and enduring life change.”



Florida Career College - Hialeah

Hialeah, FL

Regional Vice President OperationsLynn Mulehrin
Executive Director in ResidenceGeorge Hardy II
Type2-year, Private For-Profit
Campus Housing.....No
Student Population.....809
Student-to-Faculty Ratio.....15 to 1
International Students0



Prayer Requests:

1. Please pray according to Luke 10.2 “The harvest is plentiful, but the laborers are few; therefore beseech the Lord of the harvest to send out laborers into His harvest.”
2. Pray for unity within the Christian community on campuses,
3. Ask God to send a student awakening to our university campuses.
4. Pray that the Holy Spirit will bring conviction of “sin, righteousness and judgment” (Jn 16.8).
5. Pray for the school administrators, staff and faculty.
6. Pray for local churches to be involved in the lives of students, especially the community campuses and schools in small towns.



This Campus Has NOT Been Adopted

Known Christian Groups on Campus:

No Known Gospel Witness

DAY
29



Mission Statement:

“Driving personal and community transformation by empowering students to make a positive and enduring life change.”



Florida Career College - Jacksonville

Jacksonville, FL

Regional Vice President OperationsTim Moscato
Campus President/Executive DirectorJose Davila
Type2-year, Private For-Profit
Campus HousingNo
Student Population684
Student-to-Faculty Ratio15 to 1
International Students0



Prayer Requests:

1. Please pray according to Luke 10.2 “The harvest is plentiful, but the laborers are few; therefore beseech the Lord of the harvest to send out laborers into His harvest.”
2. Pray for unity within the Christian community on campuses,
3. Ask God to send a student awakening to our university campuses.
4. Pray that the Holy Spirit will bring conviction of “sin, righteousness and judgment” (Jn 16.8).
5. Pray for the school administrators, staff and faculty.
6. Pray for local churches to be involved in the lives of students, especially the community campuses and schools in small towns.



This Campus Has NOT Been Adopted

Known Christian Groups on Campus:

No Known Gospel Witness

DAY
30



Mission Statement:

“Driving personal and community transformation by empowering students to make a positive and enduring life change.”



Florida Career College Lauderdale Lakes Lauderdale Lakes, FL

Regional Vice President of OperationsLynn Mulherin
Campus President “To Be Determined”
Type 2-year, Private For-Profit
Campus Housing No
Student Population..... 1,048
Student-to-Faculty Ratio 15 to 1
International Students..... 0



Prayer Requests:

1. Please pray according to Luke 10.2 “The harvest is plentiful, but the laborers are few; therefore beseech the Lord of the harvest to send out laborers into His harvest.”
2. Pray for unity within the Christian community on campuses,
3. Ask God to send a student awakening to our university campuses.
4. Pray that the Holy Spirit will bring conviction of “sin, righteousness and judgment” (Jn 16.8).
5. Pray for the school administrators, staff and faculty.
6. Pray for local churches to be involved in the lives of students, especially the community campuses and schools in small towns.

This Campus Has NOT Been Adopted

Known Christian Groups on Campus:

No Known Gospel Witness

DAY
31



Mission Statement:

“Driving personal and community transformation by empowering students to make a positive and enduring life change.”

