

Potomac Ministry Network of the AG

31 Day Prayer Guide



Volume I

Dear Friends of Collegiate Student Ministry,

The document you have before you is the first of a five volume set of prayer guides targeted for the Potomac Ministry Network (PMN). The purpose of these prayer guides is simple. We want to put into as many hands as possible, tools to encourage and equip people to pray for college and universities across the PMN. It is our intention to provide every Assembly of God church in the USA, district by district, the opportunity and tools to pray for college students, staff and faculty.

We are praying for a move of God to shake our campuses, the likes of which we have not seen in our generation. We are believing for an out pouring of the Holy Spirit to grip the lives of men and women, young and old. Please believe with us as we move forward.

In these prayer guides, you will find statistics for each school, starting in Maryland. We tried to provide you with enough information to make your prayers more precise, but not overwhelming. For example, each prayer guide has information on the known Christian groups on campus. When possible, we have supplied the names of the individual students who are listed as the “first contact” of each group.

Some schools do not show student leader’s names. When that was the case, we have looked for the group’s faculty advisor. That name appears and is so marked. Often, we could not find a contact person at all. When that happened, we inserted a question mark.

Many schools have chaplains or spiritual life offices. Please pray for these men and women, that they too will be sensitive to the leading of the Holy Spirit. The Holy Spirit is not bound by denominations or back grounds. He is able to reach into the seeking heart.

As you pray, please remember to pray for the students who live in student housing. You will notice that each school listed below will have a spot to show whether they have student housing or not. A lot of really crazy stuff happens in dorms, especially co-ed dorms!

There is a section on each page for recommended prayer requests. Please see this as springboard to prayer. Allow the Holy Spirit to lead you beyond what has been recommended.

We have included a section on international students. We are using the [College Factual](#) website for all pertinent data. The international student information is under the “Student Life” tab.

Finally, we wanted to let you know that this prayer guide was compiled with data from each school’s individual website, as well as the National Center for Education Statistics ([NCES](#)). We only included schools which offer at least an associate’s degree and have a student population of over 350.

Thank you in advance, for investing time into this next generation. Only eternity will tell what we helped along and what we were able to hinder with our prayers.

Be Blessed,
Joe and Heidi Barrale
[Assemblies of God U.S. Missionaries](#)
[Chi Alpha](#) / [Adopt-A-Campus.org](#)

A List of Schools Included in this Prayer Guide

Day 1 Allegany College of Maryland

Day 2 Anne Arundel Community College

Day 3 Baltimore City Community College

Day 4 Bowie State University

Day 5 Capitol Technology University

Day 6 Carroll Community College

Day 7 Cecil College

Day 8 Chesapeake College

Day 9 College of Southern Maryland

Day 10 Community College of Baltimore County

Day 11 Coppin State University

Day 12 Fortis College-Landover

Day 13 Frederick Community College

Day 14 Frostburg State University

Day 15 Garrett College

Day 16 Goucher College

Day 17 Hagerstown Community College

Day 18 Harford Community College

Day 19 Hood College

Day 20 Howard Community College

Day 21 Johns Hopkins University

Day 22 Lincoln College of Technology-Columbia

Day 23 Loyola University Maryland

Day 24 Maryland Institute College of Art

Day 25 Maryland University of Integrative Health

Day 26 McDaniel College

Day 27 Montgomery College

Day 28 Morgan State University

Day 29 Mount St. Mary's University

Day 30 Ner Israel Rabbinical College

Day 31 Notre Dame of Maryland University

Allegany College of Maryland Cumberland, MD



This Campus Has NOT Been Adopted

Known Christian Groups on Campus:

Advocates 4 Christ Levi Feaster (Advisor)

DAY
1

President..... Cynthia S. Bambara
Type..... 2-year Public
Campus Housing Yes
Student Population 2,523
Student-to-Faculty Ratio 11 to 1
“There are approximately 26 international students at Allegany College of Maryland; they make up 1.0% of all total students.”



Mission Statement:

“We deliver diverse and relevant education centered around student success in a supportive and engaging community.”

Prayer Requests:

- 1) Jesus said in Luke 10.2 “*The harvest is plentiful, but the laborers are few; therefore beseech the Lord of the harvest to send out laborers into His harvest.*”
- 2) Please pray for all Christian groups who may be on campus. Pray for unity, revival, and boldness.
- 3) Please pray that revival among Christians will develop into an awakening on campus.
- 4) Please pray for Christian staff, faculty, and administration.
- 5) Please pray for the power of the Holy Spirit to fall on campuses across the United States.



Anne Arundel Community College

Arnold, MD



PresidentDawn Lindsay
Type2-year, Public
Campus Housing.....No
Student Population.....11,948
Student-to-Faculty Ratio.....17 to 1

“There are approximately 200 international students at Anne Arundel Community College; they make up 1.6% of all total students.”

*Additional Locations:

Hanover, MD
Fort Meade, MD
Glenn Burnie, MD



Prayer Requests:

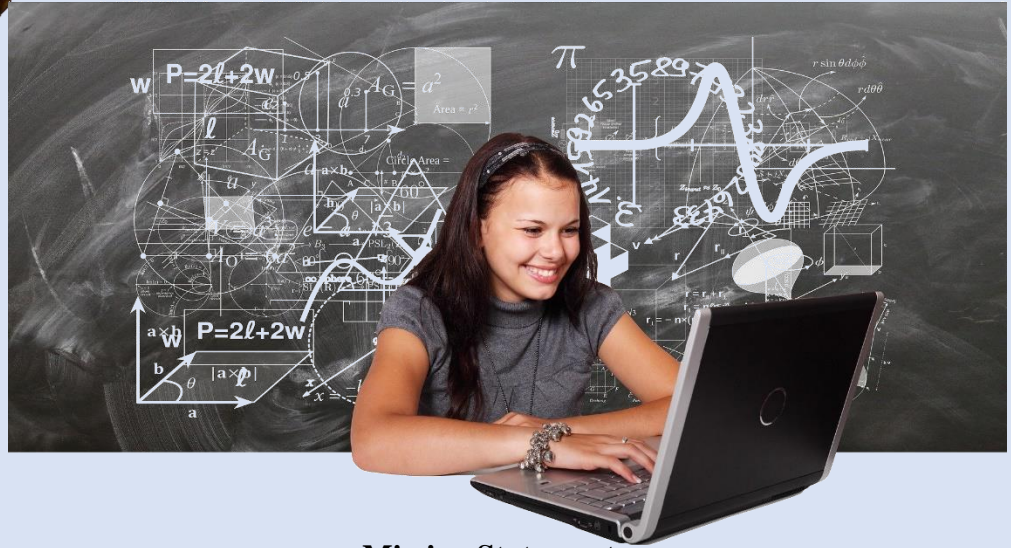
- 1) Jesus said in Luke 10.2 “*The harvest is plentiful, but the laborers are few; therefore beseech the Lord of the harvest to send out laborers into His harvest.*”
- 2) Please pray for all Christian groups who may be on campus. Pray for unity, revival, and boldness.
- 3) Please pray that revival among Christians will develop into an awakening on campus.
- 4) Please pray for Christian staff, faculty, and administration.
- 5) Please pray for the power of the Holy Spirit to fall on campuses across the United States.

This Campus Has NOT Been Adopted

Known Christian Groups on Campus:

Experience Apostolic Campus Ministry...Jonathon Boyer

DAY
2



Mission Statement:

“With learning as its central mission, Anne Arundel Community College responds to the needs of our diverse community by offering high quality, affordable, accessible and innovative lifelong learning opportunities.”



Baltimore City Community College Baltimore, MD



President..... Debra L. McCurdy
Type..... 2-year, Public
Campus Housing No
Student Population 4,181
Student-to-Faculty Ratio 14 to 1
“There are approximately 767 international students at Baltimore City Community College; they make up 17.0% of all total students.”



Prayer Requests:

- 1) Jesus said in Luke 10.2 “*The harvest is plentiful, but the laborers are few; therefore beseech the Lord of the harvest to send out laborers into His harvest.*”
- 2) Please pray for all Christian groups who may be on campus. Pray for unity, revival, and boldness.
- 3) Please pray that revival among Christians will develop into an awakening on campus.
- 4) Please pray for Christian staff, faculty, and administration.
- 5) Please pray for the power of the Holy Spirit to fall on campuses across the United States.

This Campus Has NOT Been Adopted

Known Christian Groups on Campus:
No Known Gospel Witness

DAY
3



Mission Statement:

“Baltimore City Community College provides quality, affordable, and accessible education meeting the professional and personal goals of a diverse population, changing lives, and building communities.”



Bowie State University

Bowie, MD

President..... Aminta H. Breaux
Type..... 4-year, Public
Campus Housing Yes
Student Population 6,250
Student-to-Faculty Ratio 16 to 1
International Students (2019)..... 253 from at least 14 Countries.

Bahamas, China, Colombia, Germany, Ghana, India, Jamaica, Kenya, Nepal, Nigeria, Philippines, Saudi Arabia, Sri Lanka, United Kingdom.



Prayer Requests:

- 1) Jesus said in Luke 10.2 *“The harvest is plentiful, but the laborers are few; therefore beseech the Lord of the harvest to send out laborers into His harvest.”*
- 2) Please pray for all Christian groups who may be on campus. Pray for unity, revival, and boldness.
- 3) Please pray that revival among Christians will develop into an awakening on campus.
- 4) Please pray for Christian staff, faculty, and administration.
- 5) Please pray for the power of the Holy Spirit to fall on campuses across the United States.



This Campus Has NOT been Adopted

Known Christian Groups on Campus:

Apostolic Campus Ministry ?
Campus Ministries ?
Lighthouse Campus Ministries ?

DAY
4



Mission Statement:

“As Maryland’s first historically black public university, Bowie State University empowers a diverse population of students to reach their potential by providing innovative academic programs and transformational experiences as they prepare for careers, lifelong learning, and civic responsibility. Bowie State University supports Maryland’s workforce and economy by engaging in strategic partnerships, research, and public service to benefit our local, state, national, and global communities.”



Capitol Technology University

Laurel, MD

President..... Bradford L. Sims
Type..... 4-year, Private Non-Profit
Campus Housing Yes
Student Population 754
Student-to-Faculty Ratio 15 to 1
“There are approximately 6 international students at Capitol Tech; they make up 0.8% of all total students.”



Prayer Requests:

- 1) Jesus said in Luke 10.2 “*The harvest is plentiful, but the laborers are few; therefore beseech the Lord of the harvest to send out laborers into His harvest.*”
- 2) Please pray for all Christian groups who may be on campus. Pray for unity, revival, and boldness.
- 3) Please pray that revival among Christians will develop into an awakening on campus.
- 4) Please pray for Christian staff, faculty, and administration.
- 5) Please pray for the power of the Holy Spirit to fall on campuses across the United States.



This Campus Has NOT Been Adopted

Known Christian Groups on Campus:

No Known Gospel Witness

DAY

5



Mission Statement:

“The mission of Capitol Technology University is to educate individuals for professional opportunities in engineering, computer and information sciences, and business. We provide relevant learning experiences that lead to success in the evolving global community.”



Carroll Community College Westminster, MD



This Campus Has NOT Been Adopted

Known Christian Groups on Campus

Cru?

DAY

6

President James D. Ball

Type 2-year, Public

Campus Housing No

Student Population..... 3,060

Student-to-Faculty Ratio 14 to 1

“There are approximately 12 international students at Carroll Community College; they make up 0.4% of all total students.”



Mission Statement:

“Empowering learners. Changing lives. Building community.

Carroll Community College provides accessible, high-quality educational opportunities to advance careers, enrich lives, and strengthen the community we serve.”

Prayer Requests:

- 1) Jesus said in Luke 10.2 “*The harvest is plentiful, but the laborers are few; therefore beseech the Lord of the harvest to send out laborers into His harvest.*”
- 2) Please pray for all Christian groups who may be on campus. Pray for unity, revival, and boldness.
- 3) Please pray that revival among Christians will develop into an awakening on campus.
- 4) Please pray for Christian staff, faculty, and administration.
- 5) Please pray for the power of the Holy Spirit to fall on campuses across the United States.



Cecil College North East, MD

President.....Mary Way Bolt
Type2-year, Public
Campus Housing.....No
Student Population.....2,090
Student-to-Faculty Ratio.....12 to 1
“There are approximately 45 international students at Cecil College;
they make up 1.9% of all total students.”

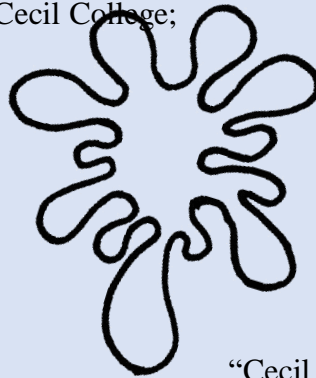
*Additional Location

Elkton Station, Elkton, MD



Prayer Requests:

- 1) Jesus said in Luke 10.2 “*The harvest is plentiful, but the laborers are few; therefore beseech the Lord of the harvest to send out laborers into His harvest.*”
- 2) Please pray for all Christian groups who may be on campus. Pray for unity, revival, and boldness.
- 3) Please pray that revival among Christians will develop into an awakening on campus.
- 4) Please pray for Christian staff, faculty, and administration.
- 5) Please pray for the power of the Holy Spirit to fall on campuses across the United States.



This Campus Has Not Been Adopted

Known Christian Groups on Campus:

Amazing Grace?

DAY

7



Mission Statement:

“Cecil College provides a supportive learning environment that focuses on innovation, student success, academic progress, and workforce development. We are committed to promoting opportunities that enrich the quality of life for the diverse communities we serve.”



Chesapeake College

Wye Mills, MD

President and CEO.....Cliff Coppersmith
Type2-year Public
Campus Housing.....No
Student Population.....1,904
Student-to-Faculty Ratio.....14 to 1
“There are approximately 31 international students at Chesapeake College; they make up 1.5% of all total students.”



Prayer Requests:

- 1) Jesus said in Luke 10.2 “*The harvest is plentiful, but the laborers are few; therefore beseech the Lord of the harvest to send out laborers into His harvest.*”
- 2) Please pray for all Christian groups who may be on campus. Pray for unity, revival, and boldness.
- 3) Please pray that revival among Christians will develop into an awakening on campus.
- 4) Please pray for Christian staff, faculty, and administration.
- 5) Please pray for the power of the Holy Spirit to fall on campuses across the United States.



This Campus Has NOT Been Adopted

Known Christian Groups on Campus:

No Known Gospel Witness



DAY
8

Mission Statement:

“Chesapeake College's core commitment is to prepare students from diverse communities to excel in further education and employment in a global society. We put students first, offering transformative educational experiences. Our programs and services are comprehensive, responsive and affordable...”



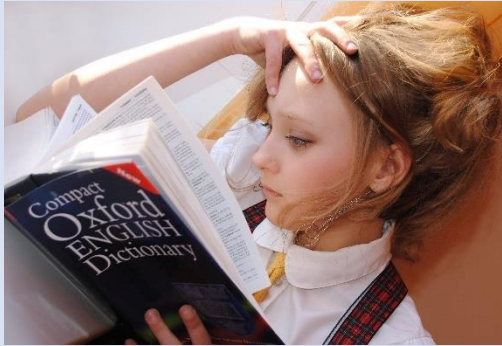
College of Southern Maryland

La Plata, MD

President..... Maureen Murphy
Type..... 2-year, Public
Campus Housing No
Student Population 6,164
Student-to-Faculty Ratio 17 to 1
“There are approximately 40 international students at College of Southern Maryland; they make up 0.6% of all total students.”

*Additional Locations:

Leonardtwn Campus
Prince Frederick Campus
Regional Hughesville Campus



Prayer Requests:

- 1) Jesus said in Luke 10.2 “*The harvest is plentiful, but the laborers are few; therefore beseech the Lord of the harvest to send out laborers into His harvest.*”
- 2) Please pray for all Christian groups who may be on campus. Pray for unity, revival, and boldness.
- 3) Please pray that revival among Christians will develop into an awakening on campus.
- 4) Please pray for Christian staff, faculty, and administration.
- 5) Please pray for the power of the Holy Spirit to fall on campuses across the United States.



This Campus Has NOT Been Adopted

Known Christian Groups on Campus:
Intervarsity Christian Fellowship...Kay Lee

DAY
9



Mission Statement:

“The College of Southern Maryland enhances lives and strengthens the economic vitality of a diverse and changing region by providing affordable postsecondary education, workforce development, and cultural and personal enrichment opportunities.”



Community College of Baltimore County Baltimore, MD

President..... Sandra L. Kurtinitis
Type 2-year, Public
Campus Housing No
Student Population 17,573
Student-to-Faculty Ratio 16 to 1
“There are approximately 1,096 international students at CCBC; they make up 5.8% of all total students.”

*Additional Locations:

CCBC - Dundalk
CCBC - Essex
Various Extension Centers



Prayer Requests:

- 1) Jesus said in Luke 10.2 “*The harvest is plentiful, but the laborers are few; therefore beseech the Lord of the harvest to send out laborers into His harvest.*”
- 2) Please pray for all Christian groups who may be on campus. Pray for unity, revival, and boldness.
- 3) Please pray that revival among Christians will develop into an awakening on campus.
- 4) Please pray for Christian staff, faculty, and administration.
- 5) Please pray for the power of the Holy Spirit to fall on campuses across the United States.



This Campus Has NOT Been Adopted

Known Christian Groups on Campus:

Bethel Campus Fellowship..... Susan Landry (Advisor-Essex)
Christian Fellowship..... Rose Henein (Advisor-Main)



Mission Statement:

“The Community College of Baltimore County transforms lives by providing an accessible, affordable, and high-quality education that prepares students for transfer and career success, strengthens the regional workforce, and enriches our community.”



DAY
10

Coppin State University Baltimore, MD



This Campus Has NOT Been Adopted

DAY
11

Known Christian Groups on Campus:

Bethel Campus Fellowship Denyce Watties-Daniels (Advisor)

President & CEO Anthony L. Jenkins
Type 4-year, Public
Campus Housing Yes
Student Population 2,348
Student-to-Faculty Ratio 12 to 1
“There are approximately 332 international students at Coppin State University; they make up 12.1% of all total students.”

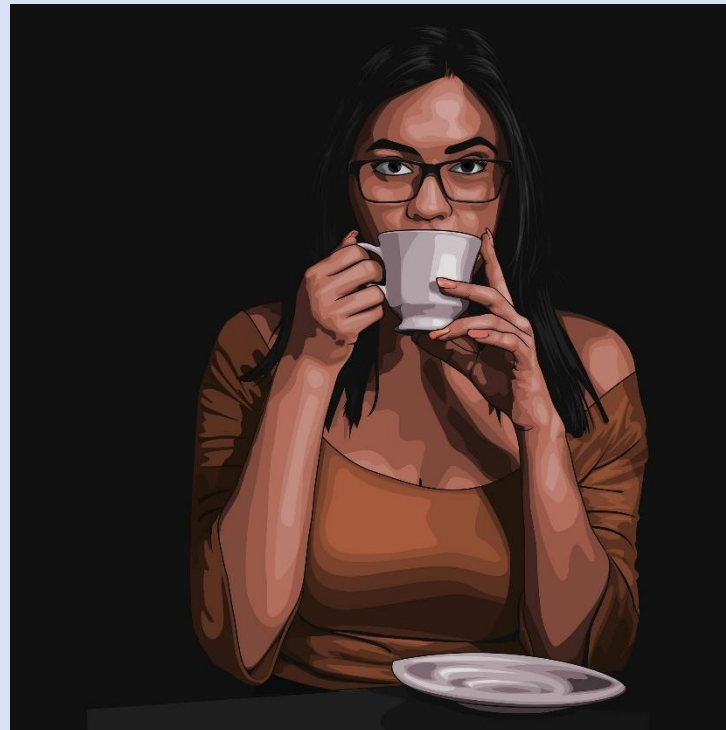


Prayer Requests:

- 1) Jesus said in Luke 10.2 “*The harvest is plentiful, but the laborers are few; therefore beseech the Lord of the harvest to send out laborers into His harvest.*”
- 2) Please pray for all Christian groups who may be on campus. Pray for unity, revival, and boldness.
- 3) Please pray that revival among Christians will develop into an awakening on campus.
- 4) Please pray for Christian staff, faculty, and administration.
- 5) Please pray for the power of the Holy Spirit to fall on campuses across the United States.

Mission Statement:

“Coppin State University, a Historically Black Institution in a dynamic urban setting, serves a multi-generational student population and provides education opportunities while promoting lifelong learning. The university fosters leadership, social responsibility, civic and community engagement, cultural diversity and inclusion, and economic development.”



Fortis College-Landover

Landover, MD

Campus PresidentCyndie Shadow
Type2-year, Private Non-Profit
Campus HousingYes
Student Population941
Student-to-Faculty Ratio9 to 1



Prayer Requests:

- 1) Jesus said in Luke 10.2 *“The harvest is plentiful, but the laborers are few; therefore beseech the Lord of the harvest to send out laborers into His harvest.”*
- 2) Please pray for all Christian groups who may be on campus. Pray for unity, revival, and boldness.
- 3) Please pray that revival among Christians will develop into an awakening on campus.
- 4) Please pray for Christian staff, faculty, and administration.
- 5) Please pray for the power of the Holy Spirit to fall on campuses across the United States.



This Campus Has NOT Been Adopted

Known Christian Groups on Campus:

No Known Gospel Witness

DAY
12



Mission Statement:

“Fortis College provides postsecondary career education to both traditional and nontraditional students through a variety of certificate and degree programs that assist adult students in enhancing their career opportunities and improving problem-solving abilities. Fortis College strives to develop within its students the desire for lifelong and continued education...”



Frederick Community College

Frederick, MD



President..... Annesa Cheek
Type..... 2-year, Public
Campus Housing No
Student Population 5,756
Student-to-Faculty Ratio..... 17 to 1

“There are approximately 57 international students at Frederick Community College; they make up 1.0% of all total students.”



Prayer Requests:

- 1) Jesus said in Luke 10.2 “*The harvest is plentiful, but the laborers are few; therefore beseech the Lord of the harvest to send out laborers into His harvest.*”
- 2) Please pray for all Christian groups who may be on campus. Pray for unity, revival, and boldness.
- 3) Please pray that revival among Christians will develop into an awakening on campus.
- 4) Please pray for Christian staff, faculty, and administration.
- 5) Please pray for the power of the Holy Spirit to fall on campuses across the United States.

This Campus Has NOT Been Adopted

Known Christian Groups on Campus:

CRU Club..... Joyce Ruane and Jonathan Orellana



Mission Statement:

“With teaching and learning as our primary focus, FCC prepares an increasingly diverse student body to complete their goals of workforce preparation, transfer career development and personal enrichment with quality, innovative lifelong learning. In traditional and alternative learning environments, we anticipate and respond to the needs of our local, regional and global communities.”



DAY
13

Frostburg State University

Frostburg, MD

President Ronald Nowaczyk
 Type 4-year, Public
 Campus Housing Yes
 Student Population 4,857
 Student-to-Faculty Ratio 14 to 1
International Students (2019) 310 from at least 11 Countries.
 Bahamas, Canada, China, Colombia, France, Ghana, India,
 Nigeria, Peru, Saudi Arabia, United Kingdom.



Prayer Requests:

- 1) Jesus said in Luke 10.2 *“The harvest is plentiful, but the laborers are few; therefore beseech the Lord of the harvest to send out laborers into His harvest.”*
- 2) Please pray for all Christian groups who may be on campus. Pray for unity, revival, and boldness.
- 3) Please pray that revival among Christians will develop into an awakening on campus.
- 4) Please pray for Christian staff, faculty, and administration.
- 5) Please pray for the power of the Holy Spirit to fall on campuses across the United States.



This Campus Has NOT Been Adopted

DAY
14

Known Christian Groups on Campus:

University Chaplain..... Cynthia (Cindy) Zirlott
 Baptist Student Ministry
 Student Leader..... Andii Taylor
 Pastor Ron Yost
 Bridges - International Student Ministry
 Non-Student Leader..... Johnny Lawrence
 Advisor Rebekah McCauley
 Catholic Campus Ministry..... ?
 Chi Alpha Campus Ministry
 Non-Student Leader..... David Warder
 Pastor Jessalyn Warder
 Student Leader..... Gabrielle Reed
 CRU
 Student Leader..... Jordan Beachy
 Staff Leader Daniel Sisler
 Advisor Peggy Biser
 Fellowship of Christian Athletes Connor Eberly
 Advisor Cynthia Zirlott
 First Love Frostburg
 Student Leader..... Kwabena Bofah
 Advisor James Saku
 United Campus Ministry
 Student Leader..... Logan Wesley
 Chaplain..... Cynthia Zirlott
 Unified Voices Under God’s Dominion (Gospel Choir)
 Advisor Shawn Jones
 Student President..... Reginald Morton, III



Mission Statement:

“Frostburg State University is a student-centered teaching and learning institution featuring experiential opportunities. The University offers students a distinctive and distinguished baccalaureate education along with a select set of applied master’s and doctoral programs. Frostburg serves regional and statewide economic and workforce development; promotes cultural enrichment, civic responsibility, and sustainability; and prepares future leaders to meet the challenges of a complex and changing global society.”

Garrett College McHenry, MD

President..... Richard Midcap
Type 2-year, Public
Campus Housing Yes
Student Population 624
Student-to-Faculty Ratio 13 to1

“There are approximately 11 [international](#) students at Garrett College; they make up 1.7% of all total students.”



Prayer Requests:

- 1) Jesus said in Luke 10.2 “*The harvest is plentiful, but the laborers are few; therefore beseech the Lord of the harvest to send out laborers into His harvest.*”
- 2) Please pray for all Christian groups who may be on campus. Pray for unity, revival, and boldness.
- 3) Please pray that revival among Christians will develop into an awakening on campus.
- 4) Please pray for Christian staff, faculty, and administration.
- 5) Please pray for the power of the Holy Spirit to fall on campuses across the United States.



This Campus Has NOT Been Adopted

Known Christian Groups on Campus:

CRU..... Carla Zeigler (Advisor)

DAY
15



Mission Statement:

“Garrett College provides an accessible, quality and comprehensive educational experience in a supportive environment to a diverse student population in both traditional and non-traditional settings. We offer associate degrees and certificate programs as well as continuing education to meet the transfer, career, workforce development, and lifelong learning needs of our students and the community. We are committed to the ongoing development of engaging, innovative, and sustainable curricula, programs, and initiatives that are responsive to a changing world. The College respects and cares for students as individuals and as members of diverse groups, and supports their aspirations for a better life.”



Goucher College Baltimore, MD



This Campus Has NOT Been Adopted

Known Christian Groups on Campus:

ChaplainMaeba Jonas

Goucher Christian FellowshipJuliana Ottomano

DAY
16

President.....Kent Devereaux
Type4-year, Private Non-Profit
Campus Housing.....Yes
Student Population.....2,015
Student-to-Faculty Ratio.....9 to 1
International Students (2019).....42 from at least 18 Countries.

Bangladesh, Canada, China, Ghana, Hong Kong, India, Indonesia, Iran, Jamaica, Japan, Mexico, Nepal, Russia, South Korea, Sweden, Turkey, United Kingdom, Vietnam.



Mission Statement:

“Goucher College provides an innovative liberal arts education that prepares students with a broad, humane perspective for a life of inquiry, creativity, and critical and analytical thinking.”

Prayer Requests:

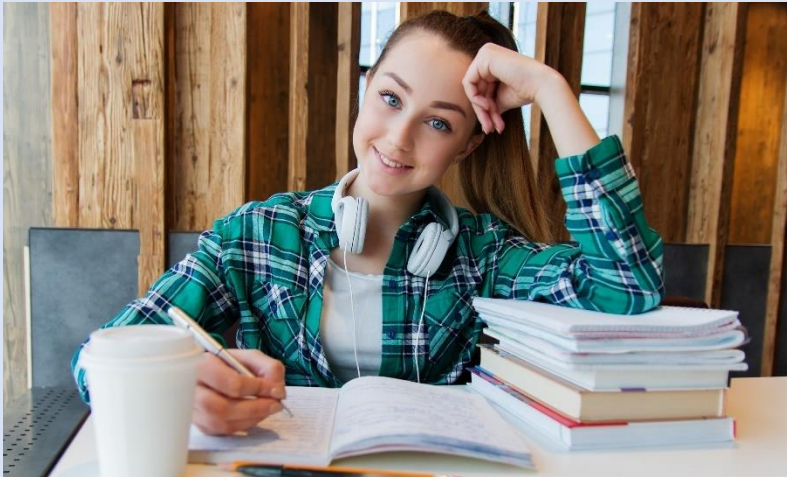
- 1) Jesus said in Luke 10.2 “*The harvest is plentiful, but the laborers are few; therefore beseech the Lord of the harvest to send out laborers into His harvest.*”
- 2) Please pray for all Christian groups who may be on campus. Pray for unity, revival, and boldness.
- 3) Please pray that revival among Christians will develop into an awakening on campus.
- 4) Please pray for Christian staff, faculty, and administration.
- 5) Please pray for the power of the Holy Spirit to fall on campuses across the United States.



Hagerstown Community College

Hagerstown, MD

PresidentJames Klauber
Type2-year, Public
Campus Housing.....No
Student Population.....3,433
Student-to-Faculty Ratio.....18 to 1
“There are approximately 48 international students at Hagerstown Community College; they make up 1.2% of all total students.”



Prayer Requests:

- 1) Jesus said in Luke 10.2 “*The harvest is plentiful, but the laborers are few; therefore beseech the Lord of the harvest to send out laborers into His harvest.*”
- 2) Please pray for all Christian groups who may be on campus. Pray for unity, revival, and boldness.
- 3) Please pray that revival among Christians will develop into an awakening on campus.
- 4) Please pray for Christian staff, faculty, and administration.
- 5) Please pray for the power of the Holy Spirit to fall on campuses across the United States.



This Campus Has NOT Been Adopted
Known Christian Groups on Campus:
Christian Fellowship Club Ed Bass

DAY
17



Mission Statement:

“HCC ensures equitable access to affordable, high-quality educational programs, while fostering workforce development and cultural vitality in the region.”



Harford Community College

Bel Air, MD



President.....Theresa B. Felder
Type4-year, Public
Campus Housing.....Yes
Student Population.....11,741
Student-to-Faculty Ratio.....16 to 1
“There are approximately 63 international students at Harford Community College; they make up 1.1% of all total students.”



Prayer Requests:

- 1) Jesus said in Luke 10.2 “*The harvest is plentiful, but the laborers are few; therefore beseech the Lord of the harvest to send out laborers into His harvest.*”
- 2) Please pray for all Christian groups who may be on campus. Pray for unity, revival, and boldness.
- 3) Please pray that revival among Christians will develop into an awakening on campus.
- 4) Please pray for Christian staff, faculty, and administration.
- 5) Please pray for the power of the Holy Spirit to fall on campuses across the United States.

This Campus Has NOT Been Adopted

Known Christian Groups on Campus:

CRU.....?
Fellowship of Christian Athletes.....?
Harvest Ministry.....?
Young Life.....?



Mission Statement:

“Grow. Achieve. Inspire. Contribute.”

Vision Statement

“Strive for:

Satisfaction: Demonstrate excellence in all we do as measured by those we serve.

Completion: Do what it takes for students to achieve their goals.

Success: Prepare all constituents to make a positive impact and inspire change in the world.”



Hood College Frederick, MD

President..... Andrea E. Chapdelaine
Type..... 4-year, Private Non-Profit
Campus Housing Yes
Student Population 2,042
Student-to-Faculty Ratio 11 to 1
International Students (2019)..... 139 from at least 20 Countries.
Bangladesh, China, Colombia, France, Germany, Ghana, India,
Nepal, Nigeria, Pakistan, Saudi Arabia, South Korea, Spain, United
Kingdom, Vietnam.



Prayer Requests:

- 1) Jesus said in Luke 10.2 *“The harvest is plentiful, but the laborers are few; therefore beseech the Lord of the harvest to send out laborers into His harvest.”*
- 2) Please pray for all Christian groups who may be on campus. Pray for unity, revival, and boldness.
- 3) Please pray that revival among Christians will develop into an awakening on campus.
- 4) Please pray for Christian staff, faculty, and administration.
- 5) Please pray for the power of the Holy Spirit to fall on campuses across the United States.



This Campus Has NOT Been Adopted

Known Christian Groups on Campus:

Fellowship of Christian Athletes..... ?

InterVarsity Christian Fellowship Emily Molino

DAY
19



Mission Statement:

“Through an integration of the liberal arts and the professions, Hood College provides an education that empowers students to use their hearts, minds and hands to meet personal, professional and global challenges and to lead purposeful lives of responsibility, leadership, service and civic engagement.”



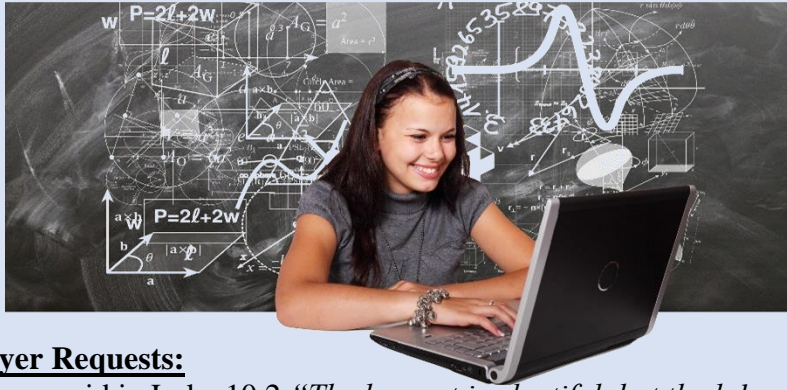
Howard Community College Columbia, MD

President..... Daria J. Willis
Type..... 2-year, Public
Campus Housing No
Student Population 9,566
Student-to-Faculty Ratio 15 to 1
“There are approximately 512 international students at Howard Community College; they make up 5.6% of all total students.”

*Additional Locations

Laurel College Center

“Training Development Solutions by Howard Community College
(located within the Maryland Innovation Center)”



Prayer Requests:

- 1) Jesus said in Luke 10.2 “*The harvest is plentiful, but the laborers are few; therefore beseech the Lord of the harvest to send out laborers into His harvest.*”
- 2) Please pray for all Christian groups who may be on campus. Pray for unity, revival, and boldness.
- 3) Please pray that revival among Christians will develop into an awakening on campus.
- 4) Please pray for Christian staff, faculty, and administration.
- 5) Please pray for the power of the Holy Spirit to fall on campuses across the United States.



This Campus Has NOT Been Adopted

Known Christian Groups on Campus:

Agape Campus Christian Fellowship ?
CRU ?
First Love Christian Fellowship ?
Campus Disciples ?

DAY
20



Mission Statement:

“Providing pathways to success”

Vision Statement

“A place to discover greatness in yourself and others.”



Johns Hopkins University Baltimore, MD

President..... Ronald J. Daniels
 Type..... 4-year, Private Non-Profit
 Campus Housing Yes
 Student Population 28,890
 Student-to-Faculty Ratio 6 to 1

International Students (2019)..... 5,233 from at least 48 Countries.

Australia, Bahamas, Bangladesh, Brazil, Canada, China, Colombia, Ecuador, Egypt, France, Germany, Ghana, Greece, Hong Kong, India, Indonesia, Iran, Israel, Jamaica, Japan, Jordan, Kenya, Kuwait, Malaysia, Mexico, Nepal, Netherlands, Nigeria, Norway, Pakistan, Peru, Philippines, Russia, Saudi Arabia, South Korea, Spain, Sri Lanka, Sweden, Taiwan, Thailand, Turkey, Ukraine, United Kingdom, Venezuela, Vietnam.



Prayer Requests:

- 1) Jesus said in Luke 10.2 *“The harvest is plentiful, but the laborers are few; therefore beseech the Lord of the harvest to send out laborers into His harvest.”*
- 2) Please pray for all Christian groups who may be on campus. Pray for unity, revival, and boldness.
- 3) Please pray that revival among Christians will develop into an awakening on campus.
- 4) Please pray for Christian staff, faculty, and administration.
- 5) Please pray for the power of the Holy Spirit to fall on campuses across the United States.



This Campus Has NOT Been Adopted

Known Christian Groups on Campus:

Religious & Spiritual Life

Chaplain..... Kathy Schnurr

Religious & Spiritual Life Advisory Board

Catholic..... Fr. Mannes Matous
 Orthodox Fr. Dean Moralis
 Orthodox Trevor Bullock
 Presbyterian Jenn DiFrancesco
 Lutheran..... Sandra Carlson Alexis
 AME-Methodist..... Adriene Breckenridge
 Baptist..... Josh Raskin
 Interdenominational Christian Allen Jiang
 Evangelical Non-Denom Christian..... Ellie Roper
 Natalie Guajardo

Student Groups

Adventist Student Fellowship..... ?
 Agape Campus Christian Fellowship ?
 Beloved College Community Fellowship.?
 Catholic Community..... Cassie Mitsinikos
 Graduate Chinese-Speaking Christian Fellowship
 ?
 Orthodox Christian Fellowship ?
 Episcopal Campus Ministries ?
 Graduate Christian Fellowship ?
 Hopkins Christian Fellowship ?
 Hopkins Gospel Choir ?
 Kross Campus Ministry Christine Hwang
 Methodist Students ?
 Stepping Stones Ministries Richard Meehan
 University Christian Fellowship ?



Mission Statement:

“Johns Hopkins University's mission is to educate its students and cultivate their capacity for life-long learning, to foster independent and original research, and to bring the benefits of discovery to the world.”

DAY
21

Lincoln College of Technology- Columbia Columbia, MD

CEO & President..... Scott M. Shaw
Type..... 2-year, Private Non-Profit
Campus Housing No
Student Population 870
Student-to-Faculty Ratio 20 to 1



Prayer Requests:

- 1) Jesus said in Luke 10.2 *"The harvest is plentiful, but the laborers are few; therefore beseech the Lord of the harvest to send out laborers into His harvest."*
- 2) Please pray for all Christian groups who may be on campus. Pray for unity, revival, and boldness.
- 3) Please pray that revival among Christians will develop into an awakening on campus.
- 4) Please pray for Christian staff, faculty, and administration.
- 5) Please pray for the power of the Holy Spirit to fall on campuses across the United States.



This Campus Has NOT Been Adopted

Known Christian Groups on Campus:

No Known Gospel Witness

DAY
22



Mission Statement:

"Lincoln's mission is to provide superior education and training to our students for in-demand careers in a supportive, accessible learning environment, transforming student's lives and adding value to their communities."



Loyola University Maryland

Baltimore, MD

President..... Terrence M. Sawyer
 Type..... 4-year, Private Non-Profit
 Campus Housing Yes
 Student Population 5,282
 Student-to-Faculty Ratio 12 to 1

International Students (2019)..... 64 from at least 29 Countries.

Australia, Canada, China, Egypt, France, Germany, Ghana, Hong Kong, India, Italy, Japan, Kuwait, Malaysia, Mexico, Mongolia, Netherlands, Nigeria, Philippines, Saudi Arabia, Singapore, South Korea, Spain, Sweden, Taiwan, Thailand, Ukraine, United Kingdom, Venezuela, Vietnam.



Prayer Requests:

- 1) Jesus said in Luke 10.2 *“The harvest is plentiful, but the laborers are few; therefore beseech the Lord of the harvest to send out laborers into His harvest.”*
- 2) Please pray for all Christian groups who may be on campus. Pray for unity, revival, and boldness.
- 3) Please pray that revival among Christians will develop into an awakening on campus.
- 4) Please pray for Christian staff, faculty, and administration.
- 5) Please pray for the power of the Holy Spirit to fall on campuses across the United States.



This Campus Has NOT Been Adopted

Known Christian Groups on Campus:

Campus Ministry

DirectorSeán Bray
 Assistant DirectorMegan Linz Dickinson
 Program AssistantValentin Mudiay
 Associate Director.....George Miller
 Assistant DirectorScott Adams
 Assistant DirectorEmily Kane
 University ChaplainFr. Jack Dennis
 Assistant ChaplainFr. Thomas Roach
 GA for Intentional Community
Chanali Sweeper
 GA for Program Operations
Ebo Quainoo
 InterVarsity?



Mission Statement:

“Loyola University Maryland is a Jesuit, Catholic university committed to the educational and spiritual traditions of the Society of Jesus and to the ideals of liberal education and the development of the whole person. Accordingly, the University will inspire students to learn, lead, and serve in a diverse and changing world. Loyola seeks to prepare students at both the undergraduate and graduate levels for lives of meaningful professional service and leadership. At Loyola, this means the curriculum is rigorous and faculty expectations are high. Students are challenged to understand the ethical dimensions of personal and professional life and to examine their own values, attitudes, and beliefs.”

DAY
23

Maryland Institute College of Art Baltimore, MD



This Campus Has NOT Been Adopted

Known Christian Groups on Campus:

Koinonia Christian Fellowship.....?

Mission In Christian Artists.....?

DAY
24

PresidentSamuel Hoi
Type4-year, Private Non-Profit
Campus Housing..... Yes
Student Population.....1,892
Student-to-Faculty Ratio.....8 to 1
International Students (2019)596 from at least 31 Countries.

Australia, Bangladesh, Brazil, Canada, China, Ecuador, Egypt, Hong Kong, India, Indonesia, Iran, Israel, Italy, Japan, Kuwait, Malaysia, Mexico, Nigeria, Pakistan, Philippines, Russia, Saudi Arabia, Singapore, South Korea, Taiwan, Thailand, Turkey, United Kingdom, Venezuela, Vietnam.



Prayer Requests:

- 1) Jesus said in Luke 10.2 *“The harvest is plentiful, but the laborers are few; therefore beseech the Lord of the harvest to send out laborers into His harvest.”*
- 2) Please pray for all Christian groups who may be on campus. Pray for unity, revival, and boldness.
- 3) Please pray that revival among Christians will develop into an awakening on campus.
- 4) Please pray for Christian staff, faculty, and administration.
- 5) Please pray for the power of the Holy Spirit to fall on campuses across the United States.



Mission Statement:

“EMPOWER students to forge creative, purposeful lives and careers in a diverse and changing world. THRIVE with Baltimore. MAKE the world we imagine.”



Maryland University of Integrative Health Laurel, MD

President Marc Levin,
Type 4-year, Private Non-Profit
Campus Housing No
Student Population..... 815
Student-to-Faculty Ratio Unavailable
“There are approximately 42 international students at MUIH; they make up 3.9% of all total students.”



Prayer Requests:

- 1) Jesus said in Luke 10.2 “*The harvest is plentiful, but the laborers are few; therefore beseech the Lord of the harvest to send out laborers into His harvest.*”
- 2) Please pray for all Christian groups who may be on campus. Pray for unity, revival, and boldness.
- 3) Please pray that revival among Christians will develop into an awakening on campus.
- 4) Please pray for Christian staff, faculty, and administration.
- 5) Please pray for the power of the Holy Spirit to fall on campuses across the United States.



This Campus Has NOT Been Adopted

Known Christian Groups on Campus:

No Known Gospel Witness

DAY
25



Mission Statement:

“MUIH promotes whole-person and community health and wellness through relationship centered integrative health education, care, and leadership.”



McDaniel College

Westminster, MD



President..... Julia Jasken
Type..... 4-year, Private Non-Profit
Campus Housing Yes
Student Population 2,931
Student-to-Faculty Ratio 13 to 1
International Students (2019)..... 20 from at least 20 Countries.
Australia, Canada, China, France, Germany, South Korea, United Kingdom, Vietnam.



Prayer Requests:

- 1) Jesus said in Luke 10.2 *“The harvest is plentiful, but the laborers are few; therefore beseech the Lord of the harvest to send out laborers into His harvest.”*
- 2) Please pray for all Christian groups who may be on campus. Pray for unity, revival, and boldness.
- 3) Please pray that revival among Christians will develop into an awakening on campus.
- 4) Please pray for Christian staff, faculty, and administration.
- 5) Please pray for the power of the Holy Spirit to fall on campuses across the United States.

This Campus Has NOT Been Adopted

Known Christian Groups on Campus:

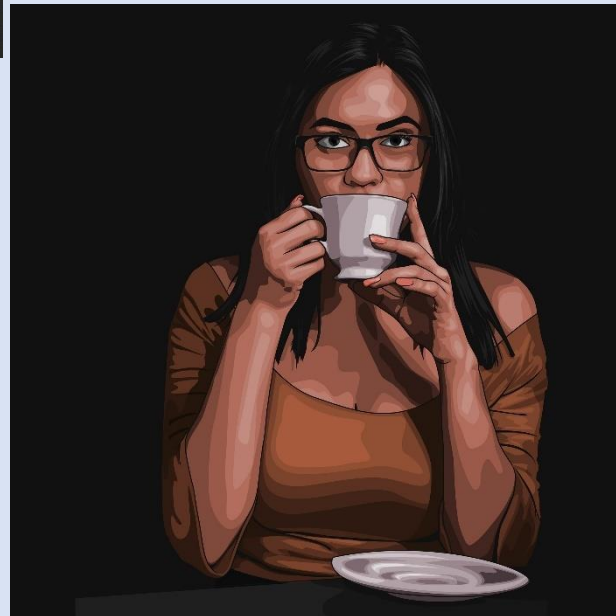
Catholic Campus Ministry..... Cassie Little
Fellowship of Christian Athletes Catherina Park
InterVarsity Christian Fellowship Audrey Perrin

DAY
26



Mission Statement:

“McDaniel College is a diverse student-centered community committed to excellence in the liberal arts and sciences and professional studies. With careful mentoring and attention to the individual, McDaniel changes lives. We challenge students to develop their unique potentials with reason, imagination, and human concern. Through flexible academic programs, collaborative and experiential learning, and global engagement, McDaniel prepares students for successful lives of leadership, service, and social responsibility.”



Montgomery College Rockville, MD

President Jermaine F. Williams
Type 2-year, Public
Campus Housing No
Student Population..... 20,037
Student-to-Faculty Ratio 17 to 1
“There are approximately 2,142 international students at Montgomery College; they make up 9.9% of all total students.”

*Additional Locations

Germantown Campus

Vice President/Provost Margaret Latimer

“[M]ore than 7,500 students”

Takoma Park/Silver Springs Campus

Vice President/Provost: Bradley Stewart

“7,800 students from over 140 countries”



Prayer Requests:

- 1) Jesus said in Luke 10.2 “*The harvest is plentiful, but the laborers are few; therefore beseech the Lord of the harvest to send out laborers into His harvest.*”
- 2) Please pray for all Christian groups who may be on campus. Pray for unity, revival, and boldness.
- 3) Please pray that revival among Christians will develop into an awakening on campus.
- 4) Please pray for Christian staff, faculty, and administration.
- 5) Please pray for the power of the Holy Spirit to fall on campuses across the United States.



This Campus Has NOT Been Adopted

Known Christian Groups on Campus:

Rockville Campus

Agape Campus Christian Fellowship

Montgomery College Christian Fellowship ..?

Takoma Park/Silver Springs Campus

Beacon of Light



Mission Statement:

“We empower our students to change their lives, and we enrich the life of our community. We are accountable for our results.”



DAY
27

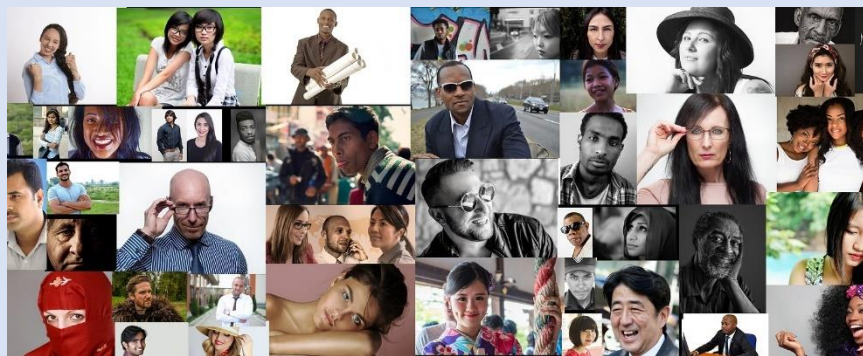
Morgan State University Baltimore, MD



President.....David Wilson
Type4-year, Public
Campus HousingYes
Student Population.....7,634
Student-to-Faculty Ratio.....13 to 1

International Students (2019).....738 from at least 29 Countries.

Australia, Bahamas, Bangladesh, Brazil, Canada, China, Colombia, Egypt, France, Ghana, Greece, India, Iran, Jamaica, Jordan, Kenya, Kuwait, Nepal, Nigeria, Pakistan, Philippines, Russia, Saudi Arabia, Sweden, Turkey, United Kingdom, Vietnam.



Prayer Requests:

- 1) Jesus said in Luke 10.2 *“The harvest is plentiful, but the laborers are few; therefore beseech the Lord of the harvest to send out laborers into His harvest.”*
- 2) Please pray for all Christian groups who may be on campus. Pray for unity, revival, and boldness.
- 3) Please pray that revival among Christians will develop into an awakening on campus.
- 4) Please pray for Christian staff, faculty, and administration.
- 5) Please pray for the power of the Holy Spirit to fall on campuses across the United States.

This Campus Has NOT Been Adopted

Known Christian Groups on Campus:

University Memorial Chapel

DeanBernard Keels
Episcopal/Anglican ChaplainNeva Brown
InterVarsity Chaplain.....Alexis Garrett
Lutheran ChaplainReggie Price
Roman Catholic Chaplain.....Wardell Barksdale
Young Life MinistryJosh Goodman
Navigators MinistryJacqueline Holland
Apostolic Faith Ministry.....Oludare Owolabi



Mission Statement:

“Morgan State University serves the community, region, state, nation, and world as an intellectual and creative resource by supporting, empowering and preparing high-quality, diverse graduates to lead the world. The University offers innovative, inclusive, and distinctive educational experiences to a broad cross section of the population in a comprehensive range of disciplines at the baccalaureate, master's, doctoral, and professional degree levels. Through collaborative pursuits, scholarly research, creative endeavors, and dedicated public service, the University gives significant priority to addressing societal problems, particularly those prevalent in urban communities.”



DAY
28

Mount St. Mary's University

Emmitsburg, MD



This Campus Has NOT Been Adopted

Known Christian Groups on Campus:

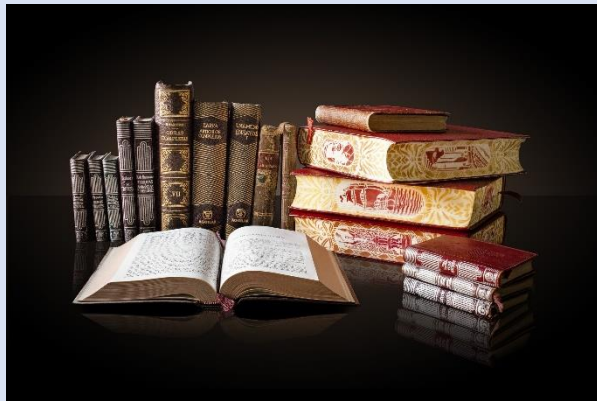
DAY
29

President Retired Brig. Gen. Timothy E. Trainor
 Type 4-year, Private Non-Profit
 Campus Housing Yes
 Student Population..... 2,560
 Student-to-Faculty Ratio 14 to 1

International Students (2019) 44 from at least 17 Countries.

Australia, Bangladesh, Canada, China, Colombia, India, Mexico, Nigeria, Pakistan, Philippines, Russia, Saudi Arabia, South Korea, Taiwan, United Kingdom, Vietnam.

***Additional Location**
 Frederick, MD



Center for Campus Ministry

Director and Chaplain Martin Moran

Assistant Director Brendan Johnson

Student groups

Mount Students for Life Anne Marie Hallinan

Knights of Columbus Brendan Johnson

Fellowship of Catholic University Students

..... Claire Whitehead

Kairos Retreat Leaders Anne Marie Hallinan

Interdenominational Ministry Dwayne Brown



Mission Statement:

“As a Catholic university, Mount St. Mary’s graduates ethical leaders who are inspired by a passion for learning and lead lives of significance in service to God and others.”

Prayer Requests:

- 1) Jesus said in Luke 10.2 “*The harvest is plentiful, but the laborers are few; therefore beseech the Lord of the harvest to send out laborers into His harvest.*”
- 2) Please pray for all Christian groups who may be on campus. Pray for unity, revival, and boldness.
- 3) Please pray that revival among Christians will develop into an awakening on campus.
- 4) Please pray for Christian staff, faculty, and administration.
- 5) Please pray for the power of the Holy Spirit to fall on campuses across the United States.



Ner Israel Rabbinical College

Baltimore, MD

DeanHarav Aharon Feldman
Type4-year, Private Non-Profit
Campus HousingYes
Student Population471
Student-to-Faculty Ratio19 to 1
“There are approximately 33 international students at Ner Israel Rabbinical College; they make up 7.9% of all total students.”



Prayer Requests:

- 1) Jesus said in Luke 10.2 “*The harvest is plentiful, but the laborers are few; therefore beseech the Lord of the harvest to send out laborers into His harvest.*”
- 2) Please pray for all Christian groups who may be on campus. Pray for unity, revival, and boldness.
- 3) Please pray that revival among Christians will develop into an awakening on campus.
- 4) Please pray for Christian staff, faculty, and administration.
- 5) Please pray for the power of the Holy Spirit to fall on campuses across the United States.



This Campus Has NOT Been Adopted

Known Christian Groups on Campus:
No Known Gospel Witness

DAY
30



Missions Statement:

“The mission of Ner Israel Rabbinical College is to train our students to become outstanding Talmidei Chachomim who through their knowledge, teaching and steadfast commitment to Torah and Mitzvos, will pass on our Mesorah to the next generation. We teach the skills of Talmudic Torah scholarship and encourage the centrality of Torah centered Jewish living. It is our belief that all will be more successful at their chosen course, due to this education. Whatever career path our students choose, they will serve in those roles better and be active members of their communities because of their Yeshiva educational experience.”



Notre Dame of Maryland University Baltimore, MD

President Marylou Yam
Type 4-year, Private Non-Profit
Campus Housing Yes
Student Population 2,233
Student-to-Faculty Ratio 7 to 1
International Students (2019) 17 from at least 8 Countries.
China, Japan, Mexico, Nigeria, Saudi Arabia, South Korea, Taiwan, Thailand.



Prayer Requests:

- 1) Jesus said in Luke 10.2 *“The harvest is plentiful, but the laborers are few; therefore beseech the Lord of the harvest to send out laborers into His harvest.”*
- 2) Please pray for all Christian groups who may be on campus. Pray for unity, revival, and boldness.
- 3) Please pray that revival among Christians will develop into an awakening on campus.
- 4) Please pray for Christian staff, faculty, and administration.
- 5) Please pray for the power of the Holy Spirit to fall on campuses across the United States.



This Campus Has NOT Been Adopted

Known Christian Groups on Campus:

Mission & Ministry

Director Julia Campagna
Chaplain Fr. Joe Muth
Campus Minister Rudy Dehaney

DAY
31



Mission Statement:

“Notre Dame of Maryland University educates leaders to transform the world.”

