

# New York Ministry Network

## 30 Day Prayer Guide



**Volume VII**

Dear Friends,

Once again, we want to thank you for your participation in this vital ministry. We know that prayer still changes “things”. God answers prayer! In the past ten years we have seen an increase of over 169% in Chi Alpha workers. That is awesome! But we have much more ground to cover. According to the [everycampus.com](http://everycampus.com) website more than 2,000 campuses in the USA still have no known Gospel Witness.

You have before you the seventh Prayer Guide, in a series of eight, created specifically for the New York Ministry Network. Our simple goal with each of these prayer guides, is to do what Jesus asked us to do, pray for laborers: Luke 10.2 *“The harvest is plentiful, but the laborers are few; therefore, plead with the Lord of the harvest to send out laborers into His harvest”* (NASB). We, at Chi Alpha, are asking you to “*plead*” with the Lord of the harvest for laborers. We believe that God wants to send a revival to the campuses of America and we need the workers to be in place! We need your help.

In this guide, like the last, we have tried to find all the Christian organizations on each campus. (It is likely that we missed a few.) Please pray for the student leaders of the Christian groups listed. They are the “soldiers on the front lines”. Some of them may not even know that they are in spiritual warfare. Pray that the Holy Spirit awakens them to that fact. (Some student groups show a question mark instead of a student leader. This happens only when a student leader or advisor could not be located.)

You will notice that several schools have chaplains and ministry staff. We never know where they stand on Christ, Sin, Biblical Authority, etc. Pray that, regardless of where they stand, that God works in them and through them.

Also, please notice, that on each page, we have included several prayer requests. These prayer requests are provided as a template. Ask God to show you how to pray for each school. Do not be “hemmed in” by the prayer requests listed.

This prayer guide was compiled with data from the list found at “The National Center for Education Statistics” ([NCES](http://nces.edu)) and from each school’s own website. For the international student statistics, we used a website called “[College Factual](http://CollegeFactual.com)”. The international statistics are under the “Student Life” tab.

Thank You again for investing time into this next generation. Only eternity will tell what we helped along and what we were able to hinder.

Be Blessed,  
Joe and Heidi Barrale  
[Assemblies of God U.S. Missionaries](http://AssembliesofGodU.S.Missionaries.org)  
[Chi Alpha](http://ChiAlpha.org) / [Adopt-A-Campus.org](http://Adopt-A-Campus.org)  
[Blog at Adopt-A-Campus](http://BlogatAdopt-A-Campus.org)

## A List of Schools Included in this Prayer Guide

Day 1 SUNY College at Old Westbury

Day 2 SUNY College at Oswego

Day 3 SUNY College at Plattsburgh

Day 4 SUNY College at Potsdam

Day 5 SUNY College of Agriculture and Technology  
at Cobleskill

Day 6 SUNY College of Environmental Science  
and Forestry

Day 7 SUNY College of Optometry

Day 8 SUNY College of Technology at Alfred

Day 9 SUNY College of Technology at Canton

Day 10 SUNY College of Technology at Delhi

Day 11 SUNY Corning Community College

Day 12 SUNY Cortland

Day 13 SUNY Downstate Health Sciences University

Day 14 SUNY Empire State College

Day 15 SUNY Maritime College

Day 16 SUNY Morrisville

Day 17 SUNY Oneonta

Day 18 SUNY Polytechnic Institute

Day 19 SUNY Westchester Community College

Day 20 Swedish Institute a College of Health Sciences

Day 21 Syracuse University

Day 22 Talmudical Seminary of Bobov

Day 23 Talmudical Seminary Oholei Torah

Day 24 Teachers College at Columbia University

Day 25 The College of Saint Rose

Day 26 The College of Westchester

Day 27 The Juilliard School

Day 28 The King's College

Day 29 The New School

Day 30 Tompkins Cortland Community College

# SUNY College at Old Westbury

## Old Westbury, NY



**This Campus Has NOT Been Adopted**

**Known Christian Groups on Campus:**

No Known Gospel Witness

DAY  
1

President ..... Timothy E. Sams  
Type ..... 4-year, Public  
Campus Housing ..... Yes  
Student Population ..... 5,007  
Student-to-Faculty Ratio ..... 17 to 1  
International Students (2019) ..... 63 from at least 15 Countries

Australia, Canada, China, Egypt, France, Hong Kong, India, Japan, Nigeria, Pakistan, South Korea, Sri Lanka, Turkey, United Kingdom, Vietnam.



### **Prayer Request:**

1. Luke 10.2 Jesus said to them: “The harvest is plentiful, but the laborers are few; therefore beseech the Lord of the harvest to send out laborers into His harvest.”
2. Please continue to pray for a revival among the Christians students, faculty, and staff.
3. Pray that the revival will turn into an awakening among the non-Christian student, faculty, and staff.
4. Please pray for the students who may be living on campus. Pray for sexual purity in the dorms and on campus.
5. Please remember to pray for any international students who may be on campus. We are praying that they would be exposed to the gospel and receive Jesus as their savior. Pray for those who make a commitment to Christ, that when they return home, they would stand strong as a witness for Christ.



### **Mission Statement**

“SUNY Old Westbury is a dynamic and diverse public liberal arts college that fosters academic excellence through close interaction among students, faculty and staff. Old Westbury weaves the values of integrity, community engagement, and global citizenship into the fabric of its academic programs and campus life. In an environment that cultivates critical thinking, empathy, creativity and intercultural understanding, we endeavor to stimulate a passion for learning and a commitment to building a more just and sustainable world. The College is a community of students, teachers, staff, and alumni bound together in mutual support, respect, and dedication to the Mission.”



# SUNY College at Oswego

## Oswego, NY

President ..... Deborah F. Stanley  
 Type ..... 4-year, Public  
 Campus Housing ..... Yes  
 Student Population..... 7,636  
 Student-to-Faculty Ratio ..... 16 to 1  
International Students (2019) ..... 212 from at least 29 Countries  
 Australia, Bahamas, Brazil, Canada, China, Colombia, Ecuador,  
 France, India, Israel, Italy, Japan, Malaysia, Mexico, Nepal,  
 Pakistan, Peru, Russia, Saudi Arabia, South Korea, Spain, Sri Lanka,  
 Sweden, Taiwan, Thailand, Turkey, Venezuela, Vietnam.



### Prayer Request:

1. Luke 10.2 Jesus said to them: "The harvest is plentiful, but the laborers are few; therefore beseech the Lord of the harvest to send out laborers into His harvest."
2. Please continue to pray for a revival among the Christians students, faculty, and staff.
3. Pray that the revival will turn into an awakening among the non-Christian student, faculty, and staff.
4. Please pray for the students who may be living on campus. Pray for sexual purity in the dorms and on campus.
5. Please remember to pray for any international students who may be on campus. We are praying that they would be exposed to the gospel and receive Jesus as their savior. Pray for those who make a commitment to Christ, that when they return home, they would stand strong as a witness for Christ.



**This Campus Has NOT Been Adopted**

**Known Christian Groups on Campus:**

This Information Was Unavailable

DAY  
2



### Mission Statement

"SUNY Oswego contributes to the common good by lighting the path to wisdom and empowering every person in the college community to pursue a meaningful life as a productive, responsible member of society."



# SUNY College at Plattsburgh

## Plattsburgh, NY



**This Campus Has NOT Been Adopted**

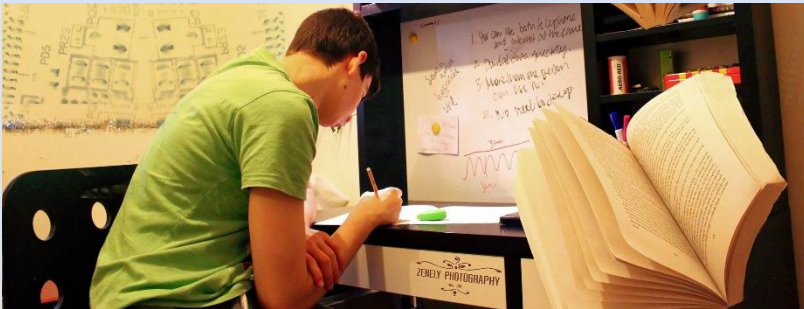
DAY  
3

### **Known Christian Groups on Campus:**

Learning & Experiencing God.....Francine Francis (Advisor)  
Newman Association .....Monica Jerry

President..... Alexander Enyedi  
Type..... 4-year, Public  
Campus Housing ..... Yes  
Student Population ..... 5,109  
Student-to-Faculty Ratio ..... 15 to 1  
International Students (2019)..... 343 from at least 38 Countries

Australia, Bangladesh, Canada, China, Colombia, Ecuador, Egypt, Germany, Ghana, Hong Kong, India, Indonesia, Iran, Jamaica, Japan, Kenya, Malaysia, Mexico, Mongolia, Nepal, Netherlands, Nigeria, Norway, Pakistan, Peru, Philippines, Russia, Saudi Arabia, South Korea, Spain, Sri Lanka, Sweden, Taiwan, Thailand, United Arab Emirates, United Kingdom, Venezuela, Vietnam.



### **Mission Statement**

“SUNY Plattsburgh is a public, comprehensive college that prepares students for academic, professional and personal success.”

### **Prayer Request:**

1. Luke 10.2 Jesus said to them: “The harvest is plentiful, but the laborers are few; therefore beseech the Lord of the harvest to send out laborers into His harvest.”
2. Please continue to pray for a revival among the Christians students, faculty, and staff.
3. Pray that the revival will turn into an awakening among the non-Christian student, faculty, and staff.
4. Please pray for the students who may be living on campus. Pray for sexual purity in the dorms and on campus.
5. Please remember to pray for any international students who may be on campus. We are praying that they would be exposed to the gospel and receive Jesus as their savior. Pray for those who make a commitment to Christ, that when they return home, they would stand strong as a witness for Christ.



# SUNY College at Potsdam

## Potsdam, NY



**This Campus Has NOT been Adopted**

DAY  
4

### **Known Christian Groups on Campus:**

Brothers and Sisters in Christ..... Luke Boyle  
InterVarsity..... Isabelle Bailey  
Newman Club..... Kevin McCullouch

### **Mission Statement**

“The State University of New York at Potsdam prepares students to act as engaged global citizens and to lead lives enriched by critical thought, creativity and discovery. As an inclusive scholarly community, rooted in our historic role in providing exemplary teacher and music education and our leadership in the fine and performing arts, we are committed to the liberal arts and sciences as an academic foundation for all students. With an abiding sense of responsibility to our region and to the world beyond, SUNY Potsdam fosters an appreciation of and respect for the variety of human experience.”

President..... John L. Graham  
Type ..... 4-year, Public  
Campus Housing..... Yes  
Student Population..... 3,084  
Student-to-Faculty Ratio..... 11 to 1  
International Students (2019)..... 20 from at least 12 Countries  
Canada, China, Germany, Mexico, United Kingdom.



### **Prayer Request:**

1. Luke 10.2 Jesus said to them: “The harvest is plentiful, but the laborers are few; therefore beseech the Lord of the harvest to send out laborers into His harvest.”
2. Please continue to pray for a revival among the Christians students, faculty, and staff.
3. Pray that the revival will turn into an awakening among the non-Christian student, faculty, and staff.
4. Please pray for the students who may be living on campus. Pray for sexual purity in the dorms and on campus.
5. Please remember to pray for any international students who may be on campus. We are praying that they would be exposed to the gospel and receive Jesus as their savior. Pray for those who make a commitment to Christ, that when they return home, they would stand strong as a witness for Christ.



# SUNY College of Agriculture and Technology at Cobleskill

## Cobleskill, NY

President .....Marion A. Terenzio  
Type .....4-year, Public  
Campus Housing.....Yes  
Student Population.....2,079  
Student-to-Faculty Ratio.....16 to 1  
“There are approximately 9 international students at SUNY Cobleskill; they make up 0.4% of all total students.”



### Prayer Request:

1. Luke 10.2 Jesus said to them: “The harvest is plentiful, but the laborers are few; therefore beseech the Lord of the harvest to send out laborers into His harvest.”
2. Please continue to pray for a revival among the Christians students, faculty, and staff.
3. Pray that the revival will turn into an awakening among the non-Christian student, faculty, and staff.
4. Please pray for the students who may be living on campus. Pray for sexual purity in the dorms and on campus.
5. Please remember to pray for any international students who may be on campus. We are praying that they would be exposed to the gospel and receive Jesus as their savior. Pray for those who make a commitment to Christ, that when they return home, they would stand strong as a witness for Christ.



**This Campus Has NOT Been Adopted**

**Known Christian Groups on Campus:**

Cobleskill Christian Fellowship.....Ray Richards (Advisor)

DAY  
5



### **Mission Statement**

“SUNY Cobleskill sets the standard for applied education that extends theory into practice. We cultivate our students to positively affect the cultural, economic, natural and technological forces in their lives.

In pursuit of our mission we strive to honor our history, teach by doing, forge pathways for success, think globally and across disciplines, cultivate sustainability, embrace and support our community, and promote personal growth.”



# SUNY College of Environmental Science and Forestry Syracuse, NY

President.....Joanie Mahoney  
Type .....4-year, Public  
Campus Housing.....Yes  
Student Population.....2,127  
Student-to-Faculty Ratio.....14 to 1  
“There are approximately 169 international students at ESF; they make up 7.6% of all total students.”

**\*Additional Campus**  
Newcomb



## **Prayer Request:**

1. Luke 10.2 Jesus said to them: “The harvest is plentiful, but the laborers are few; therefore beseech the Lord of the harvest to send out laborers into His harvest.”
2. Please continue to pray for a revival among the Christians students, faculty, and staff.
3. Pray that the revival will turn into an awakening among the non-Christian student, faculty, and staff.
4. Please pray for the students who may be living on campus. Pray for sexual purity in the dorms and on campus.
5. Please remember to pray for any international students who may be on campus. We are praying that they would be exposed to the gospel and receive Jesus as their savior. Pray for those who make a commitment to Christ, that when they return home, they would stand strong as a witness for Christ.



**This Campus Has NOT Been Adopted**

**Known Christian Groups on Campus:**  
CRU..... ?

**DAY**  
**6**



## **Mission Statement**

“The mission of the College of Environmental Science and Forestry is to advance knowledge and skills and to promote the leadership necessary for the stewardship of both the natural and designed environments.”



# SUNY College of Optometry

## New York, NY



**This Campus Has NOT Been Adopted**

DAY

7

**Known Christian Groups on Campus:**

Fellowship of Christian Optometrists ..... Cori Robinson

President.....David A. Heath  
Type .....4-year, Public  
Campus Housing.....No  
Student Population.....402  
Student-to-Faculty Ratio.....Not Available  
“There are approximately 27 international students at SUNY Optometry; they make up 6.6% of all total students.”



### **Mission Statement**

“The State University of New York College of Optometry advances visual health and patient care through leadership in education, research and service.”

### **Prayer Request:**

1. Luke 10.2 Jesus said to them: “The harvest is plentiful, but the laborers are few; therefore beseech the Lord of the harvest to send out laborers into His harvest.”
2. Please continue to pray for a revival among the Christians students, faculty, and staff.
3. Pray that the revival will turn into an awakening among the non-Christian student, faculty, and staff.
4. Please pray for the students who may be living on campus. Pray for sexual purity in the dorms and on campus.
5. Please remember to pray for any international students who may be on campus. We are praying that they would be exposed to the gospel and receive Jesus as their savior. Pray for those who make a commitment to Christ, that when they return home, they would stand strong as a witness for Christ.



# SUNY College of Technology at Alfred

## Alfred, NY



Officer-in-Charge..... John Anderson  
Type..... 4-year, Public  
Campus Housing..... Yes  
Student Population..... 3,667  
Student-to-Faculty Ratio..... 17 to 1  
International Students (2019)..... 25 from at least 13 Countries  
Bahamas, China, India, Indonesia, Japan, Kuwait, Nepal, Saudi Arabia.



### Prayer Request:

1. Luke 10.2 Jesus said to them: “The harvest is plentiful, but the laborers are few; therefore beseech the Lord of the harvest to send out laborers into His harvest.”
2. Please continue to pray for a revival among the Christians students, faculty, and staff.
3. Pray that the revival will turn into an awakening among the non-Christian student, faculty, and staff.
4. Please pray for the students who may be living on campus. Pray for sexual purity in the dorms and on campus.
5. Please remember to pray for any international students who may be on campus. We are praying that they would be exposed to the gospel and receive Jesus as their savior. Pray for those who make a commitment to Christ, that when they return home, they would stand strong as a witness for Christ.

### This Campus Has NOT Been Adopted Known Christian Groups on Campus:

CRU..... Paul Welker (Advisor)  
InterVarsity..... Peter McClain  
Lighthouse Christian Fellowship ..... Travis Raab  
New Club..... Grace Feely

DAY  
8



### Mission Statement

“Alfred State delivers outstanding associate and baccalaureate degree programs through hands-on learning, preparing in-demand and involved students in a caring community.”



# SUNY College of Technology at Canton

## Canton, NY



**This Campus Has NOT Been Adopted**

**Known Christian Groups on Campus:**

DAY

9

President .....Zvi Szafran

Type .....4-year, Public

Campus Housing ..... Yes

Student Population.....3.135

Student-to-Faculty Ratio ..... 19 to 1

“There are approximately 49 international students at SUNY Canton; they make up 1.5% of all total students.”



Campus Ministries Volunteer Clergy

Catholic .....Fr. Bryan Stitt

Baptist .....Rev. Fred Sykes

Presbyterian.....Rev. Larry Veinott

New Hope Community Church ....Jim Holt

Christian Fellowship Center .....Jamie Sinclair

United Methodist Church.....Rev. Nancy Hale

Morley Wesleyan Church .....Richard Ladouceur

Student Clubs

Cross Campus .....?

Anointed Voices of Praise .....Lashawanda Ingram (Advisor)

InterVarsity .....?

Newman Club .....Amanda Conklin (Advisor)

### **Mission Statement**

“SUNY Canton is dedicated to providing a progression of accessible, affordable, high-quality applied programs that enable students in the North Country, New York State, and beyond to achieve their highest potential both personally and professionally.”

### **Prayer Request:**

1. Luke 10.2 Jesus said to them: “The harvest is plentiful, but the laborers are few; therefore beseech the Lord of the harvest to send out laborers into His harvest.”
2. Please continue to pray for a revival among the Christians students, faculty, and staff.
3. Pray that the revival will turn into an awakening among the non-Christian student, faculty, and staff.
4. Please pray for the students who may be living on campus. Pray for sexual purity in the dorms and on campus.
5. Please remember to pray for any international students who may be on campus. We are praying that they would be exposed to the gospel and receive Jesus as their savior. Pray for those who make a commitment to Christ, that when they return home, they would stand strong as a witness for Christ.



# SUNY College of Technology at Delhi

## Delhi, NY

President ..... Michael R. Laliberte  
Type ..... 4-year, Public  
Campus Housing ..... Yes  
Student Population ..... 3,077  
Student-to-Faculty Ratio ..... 16 to 1  
International Students (2019) ..... 17 from at least 6 Countries  
China, India, Japan.



### Prayer Request:

1. Luke 10.2 Jesus said to them: “The harvest is plentiful, but the laborers are few; therefore beseech the Lord of the harvest to send out laborers into His harvest.”
2. Please continue to pray for a revival among the Christians students, faculty, and staff.
3. Pray that the revival will turn into an awakening among the non-Christian student, faculty, and staff.
4. Please pray for the students who may be living on campus. Pray for sexual purity in the dorms and on campus.
5. Please remember to pray for any international students who may be on campus. We are praying that they would be exposed to the gospel and receive Jesus as their savior. Pray for those who make a commitment to Christ, that when they return home, they would stand strong as a witness for Christ.



**This Campus Has NOT Been Adopted**  
**Known Christian Groups on Campus:**  
Brothers and Sisters in Christ ..... Joshua Lopez

DAY  
10



### Mission Statement

“Our philosophical anchor supports a student-centered institution where the student is the most important person at SUNY Delhi. SUNY Delhi’s mission catalyzes this belief by: ‘Focusing on grit and determination, SUNY Delhi engages its inclusive community through hands-on teaching and learning.’”



# SUNY Corning Community College

## Corning, NY

President ..... Bill Mullaney  
Type ..... 2-year, Public  
Campus Housing ..... Yes  
Student Population ..... 4,063  
Student-to-Faculty Ratio ..... 18 to 1  
“There are approximately 7 international students at Corning Community College; they make up 0.2% of all total students.”



### Prayer Request:

1. Luke 10.2 Jesus said to them: “The harvest is plentiful, but the laborers are few; therefore beseech the Lord of the harvest to send out laborers into His harvest.”
2. Please continue to pray for a revival among the Christians students, faculty, and staff.
3. Pray that the revival will turn into an awakening among the non-Christian student, faculty, and staff.
4. Please pray for the students who may be living on campus. Pray for sexual purity in the dorms and on campus.
5. Please remember to pray for any international students who may be on campus. We are praying that they would be exposed to the gospel and receive Jesus as their savior. Pray for those who make a commitment to Christ, that when they return home, they would stand strong as a witness for Christ.



**This Campus Has NOT Been Adopted**

**Known Christian Groups on Campus:**

Christian Club..... Kathryn Forland (Advisor)

DAY  
11



### Mission Statement

“Corning Community College serves life-long learners in our region by providing access to high-quality, affordable transfer, career, and workforce development educational opportunities. Our learning environment fosters diversity, empowerment, leadership, and teamwork for academic, professional, and personal success. We collaborate locally and promote global awareness for social, environmental, and economic sustainability.”



# SUNY Cortland

## Cortland, NY

President..... Erik J. Bitterbaum  
Type..... 4-year, Public  
Campus Housing ..... Yes  
Student Population ..... 6,832  
Student-to-Faculty Ratio ..... 16 to 1  
“There are approximately 45 international students at SUNY Cortland; they make up 0.7% of all total students.”



**This Campus Has NOT Been Adopted**

### **Known Christian Groups on Campus:**

CRU..... Peter Rogati  
Gospel Choir ..... Josey Cruz  
Newman Club..... Adriana Garcia

DAY  
12

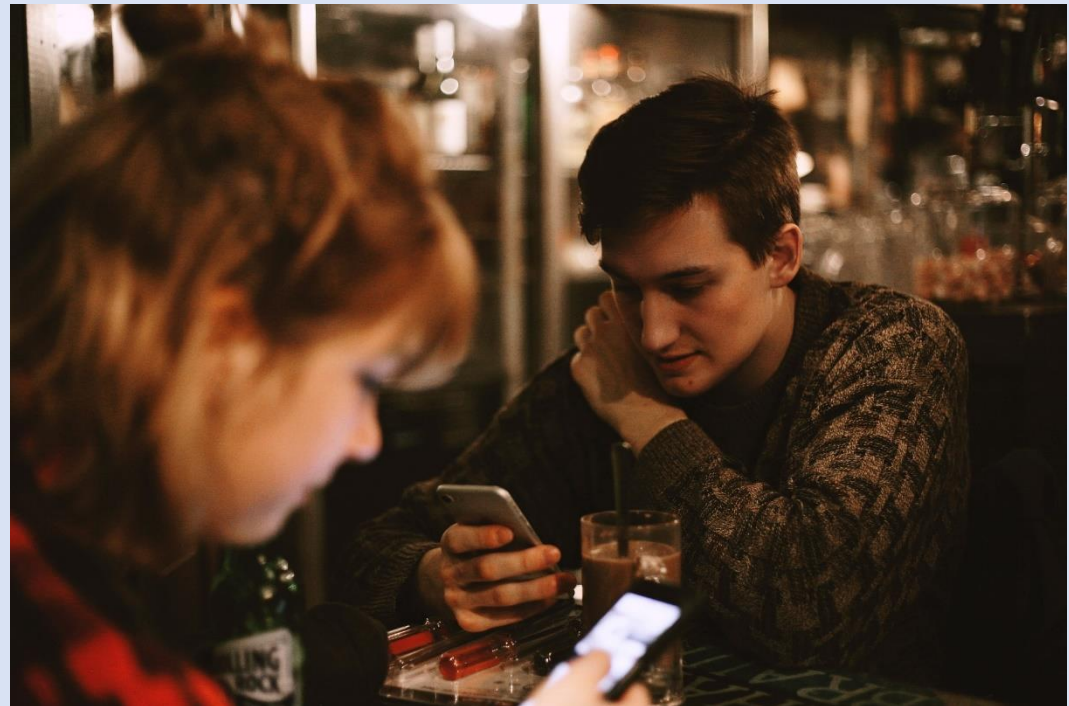


### **Missions Statement**

“SUNY Cortland is an academic community dedicated to diverse learning experiences. Students grow as engaged citizens with a strong social conscience fostered by outstanding teaching, scholarship and service.”

### **Prayer Request:**

1. Luke 10.2 Jesus said to them: “The harvest is plentiful, but the laborers are few; therefore beseech the Lord of the harvest to send out laborers into His harvest.”
2. Please continue to pray for a revival among the Christians students, faculty, and staff.
3. Pray that the revival will turn into an awakening among the non-Christian student, faculty, and staff.
4. Please pray for the students who may be living on campus. Pray for sexual purity in the dorms and on campus.
5. Please remember to pray for any international students who may be on campus. We are praying that they would be exposed to the gospel and receive Jesus as their savior. Pray for those who make a commitment to Christ, that when they return home, they would stand strong as a witness for Christ.



# SUNY Downstate Health Sciences University Brooklyn, NY



**This Campus Has NOT Been Adopted**

**Known Christian Groups on Campus:**

Christian Fellowship ..... ?

DAY  
13

President ..... Wayne J. Riley  
Type ..... 4-year, Public  
Campus Housing ..... Yes  
Student Population ..... 2,118  
Student-to-Faculty Ratio ..... 9 to 1  
“There are approximately 11 international students at SUNY Downstate;  
they make up 0.6% of all total students.”



## **Prayer Request:**

1. Luke 10.2 Jesus said to them: “The harvest is plentiful, but the laborers are few; therefore beseech the Lord of the harvest to send out laborers into His harvest.”
2. Please continue to pray for a revival among the Christians students, faculty, and staff.
3. Pray that the revival will turn into an awakening among the non-Christian student, faculty, and staff.
4. Please pray for the students who may be living on campus. Pray for sexual purity in the dorms and on campus.
5. Please remember to pray for any international students who may be on campus. We are praying that they would be exposed to the gospel and receive Jesus as their savior. Pray for those who make a commitment to Christ, that when they return home, they would stand strong as a witness for Christ.

## **Mission Statement**

- “To provide outstanding education of physicians, scientists, nurses and other healthcare professionals.
- To advance knowledge through cutting edge research and translate it into practice.
- To care for and improve the lives of our globally diverse communities.
- To foster an environment that embraces cultural diversity.”



# SUNY Empire State College

## Saratoga Springs, NY



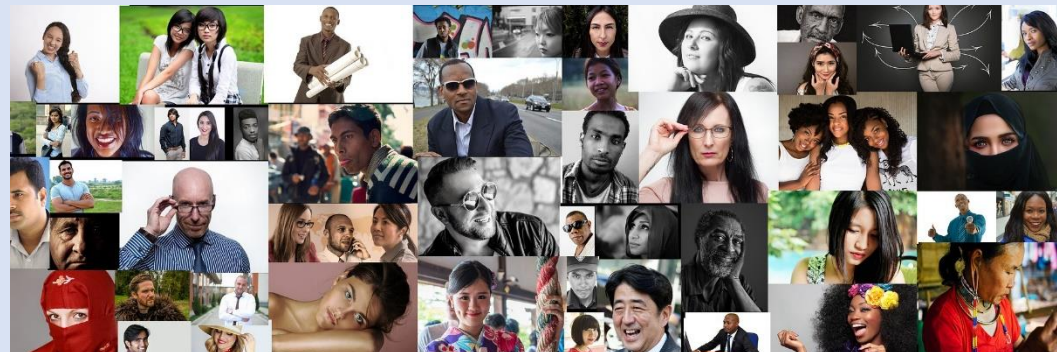
**This Campus Has NOT Been Adopted**

**Known Christian Groups on Campus:**

No Known Gospel Witness

DAY  
14

President..... Nathan Gonyea  
Type..... 4-year, Public  
Campus Housing ..... No  
Student Population ..... 10,724  
Student-to-Faculty Ratio ..... 18 to 1  
“There are approximately 44 international students at SUNY Empire; they make up 0.4% of all total students.”



### **Mission Statement**

“SUNY Empire State College provides motivated adult learners with access to innovative, flexible and quality academic programs that empower people and strengthen communities. We build on the diversity of our students, their work and life experiences and their individual personal and professional goals as the cornerstone for each academic program.”

### **Prayer Request:**

1. Luke 10.2 Jesus said to them: “The harvest is plentiful, but the laborers are few; therefore beseech the Lord of the harvest to send out laborers into His harvest.”
2. Please continue to pray for a revival among the Christians students, faculty, and staff.
3. Pray that the revival will turn into an awakening among the non-Christian student, faculty, and staff.
4. Please pray for the students who may be living on campus. Pray for sexual purity in the dorms and on campus.
5. Please remember to pray for any international students who may be on campus. We are praying that they would be exposed to the gospel and receive Jesus as their savior. Pray for those who make a commitment to Christ, that when they return home, they would stand strong as a witness for Christ.



# SUNY Maritime College

## Throggs Neck, NY



**This Campus Has NOT Been Adopted**

**Known Christian Groups on Campus:**

CRU ..... Maxwell Martin  
Newman Club ..... Jacob Pascarella

DAY  
15

President ..... Rear Adm. Michael Alfultis  
Type ..... 4-year, Public  
Campus Housing ..... Yes  
Student Population ..... 1,671  
Student-to-Faculty Ratio ..... 16 to 1  
“There are approximately 45 international students at SUNY Maritime College; they make up 2.6% of all total students.”



### **Mission Statement**

“First and foremost, Maritime College educates dynamic leaders for the global maritime industry.”

### **Vision Statement**

“Maritime College will be recognized as the leading maritime educational institution.”

### **Prayer Request:**

1. Luke 10.2 Jesus said to them: “The harvest is plentiful, but the laborers are few; therefore beseech the Lord of the harvest to send out laborers into His harvest.”
2. Please continue to pray for a revival among the Christians students, faculty, and staff.
3. Pray that the revival will turn into an awakening among the non-Christian student, faculty, and staff.
4. Please pray for the students who may be living on campus. Pray for sexual purity in the dorms and on campus.
5. Please remember to pray for any international students who may be on campus. We are praying that they would be exposed to the gospel and receive Jesus as their savior. Pray for those who make a commitment to Christ, that when they return home, they would stand strong as a witness for Christ.



# SUNY Morrisville

## Morrisville, NY



**This Campus Has NOT Been Adopted**

**Known Christian Groups on Campus:**

Brothers & Sisters in Christ.....Diane G. Tice (Advisor)  
.....Matthew Rice (Advisor)

DAY  
16

President .....David Rogers  
Type .....4-year, Public  
Campus Housing.....Yes  
Student Population.....2,486  
Student-to-Faculty Ratio.....14 to 1  
International Students (2019) 75 from at least 17 Countries  
Canada, China, Egypt, Germany, India, Indonesia,  
Japan, Jordan, Malaysia, Nigeria, Norway, Pakistan, Saudi  
Arabia, South Korea, Sweden, Taiwan, Vietnam.

### **\*Additional Location:**

Norwich Campus



### **Mission Statement**

“SUNY Morrisville works to offer diverse learning experiences so that graduates may pursue rewarding lives and careers, become engaged citizens, and contribute to our collective future.”



### **Prayer Request:**

1. Luke 10.2 Jesus said to them: “The harvest is plentiful, but the laborers are few; therefore beseech the Lord of the harvest to send out laborers into His harvest.”
2. Please continue to pray for a revival among the Christians students, faculty, and staff.
3. Pray that the revival will turn into an awakening among the non-Christian student, faculty, and staff.
4. Please pray for the students who may be living on campus. Pray for sexual purity in the dorms and on campus.
5. Please remember to pray for any international students who may be on campus. We are praying that they would be exposed to the gospel and receive Jesus as their savior. Pray for those who make a commitment to Christ, that when they return home, they would stand strong as a witness for Christ.



# SUNY Oneonta

## Oneonta, NY



President ..... Alberto J.F. Cardelle  
Type ..... 4-year, Public  
Campus Housing ..... Yes  
Student Population ..... 6,718  
Student-to-Faculty Ratio ..... 16 to 1  
“There are approximately 45 international students at SUNY Oneonta; they make up 0.7% of all total students.”



### **Prayer Request:**

1. Luke 10.2 Jesus said to them: “The harvest is plentiful, but the laborers are few; therefore beseech the Lord of the harvest to send out laborers into His harvest.”
2. Please continue to pray for a revival among the Christians students, faculty, and staff.
3. Pray that the revival will turn into an awakening among the non-Christian student, faculty, and staff.
4. Please pray for the students who may be living on campus. Pray for sexual purity in the dorms and on campus.
5. Please remember to pray for any international students who may be on campus. We are praying that they would be exposed to the gospel and receive Jesus as their savior. Pray for those who make a commitment to Christ, that when they return home, they would stand strong as a witness for Christ.

### **This Campus Has NOT Been Adopted**

#### **Known Christian Groups on Campus:**

Brothers & Sisters in Christ ..... Jessica VanBuren  
Campus Ambassadors Christian Fellowship  
..... Elizabeth Macak  
Newman Club ..... Emmanuella Agyeman Duah



#### **Mission Statement**

“We nurture a community where students grow intellectually, thrive socially and live purposefully.”



# SUNY Polytechnic Institute

## Utica, NY



**This Campus Has NOT Been Adopted**

DAY  
18

**Known Christian Groups on Campus:**

Students of Christ..... Jacques Anthony Bettig

Acting President..... Tod A. Laursen  
Type ..... 4-year, Public  
Campus Housing..... Yes  
Student Population..... 3,044  
Student-to-Faculty Ratio..... 13 to 1  
“There are approximately 153 international students at SUNY Poly;  
they make up 5.1% of all total students.”

**\*Additional Campus:**

Albany, NY



**Vision Statement**

“SUNY Polytechnic Institute is a vibrant community engaged in the pursuit of scholarship, public service, and intellectual and creative endeavors. SUNY Poly is a premier polytechnic institution dedicated to improving society by advancing knowledge—and its application—and promoting entrepreneurship and economic development.”



**Prayer Request:**

1. Luke 10.2 Jesus said to them: “The harvest is plentiful, but the laborers are few; therefore beseech the Lord of the harvest to send out laborers into His harvest.”
2. Please continue to pray for a revival among the Christians students, faculty, and staff.
3. Pray that the revival will turn into an awakening among the non-Christian student, faculty, and staff.
4. Please pray for the students who may be living on campus. Pray for sexual purity in the dorms and on campus.
5. Please remember to pray for any international students who may be on campus. We are praying that they would be exposed to the gospel and receive Jesus as their savior. Pray for those who make a commitment to Christ, that when they return home, they would stand strong as a witness for Christ.

# SUNY Westchester Community College

## Valhalla, NY



**This Campus Has NOT Been Adopted**

**Known Christian Groups on Campus:**

Bible Study Club..... Steven Han (Advisor)

DAY  
19

President .....Belinda S. Miles  
Type .....2-year, Public  
Campus Housing.....No  
Student Population.....10,072  
Student-to-Faculty Ratio.....20 to 1  
“There are approximately 160 international students at SUNY Westchester Community College; they make up 1.4% of all total students.”

### **\*Additional Campuses:**

Ossining Extension Center  
Peekskill Extension Center  
White Plains Education & Training Center  
Yonkers Extension Center



### **Mission Statement**

“Westchester Community College provides accessible, high quality and affordable education to meet the needs of our diverse community. We are committed to student success, academic excellence, workforce development, economic development and lifelong learning.”

### **Prayer Request:**

1. Luke 10.2 Jesus said to them: “The harvest is plentiful, but the laborers are few; therefore beseech the Lord of the harvest to send out laborers into His harvest.”
2. Please continue to pray for a revival among the Christians students, faculty, and staff.
3. Pray that the revival will turn into an awakening among the non-Christian student, faculty, and staff.
4. Please pray for the students who may be living on campus. Pray for sexual purity in the dorms and on campus.
5. Please remember to pray for any international students who may be on campus. We are praying that they would be exposed to the gospel and receive Jesus as their savior. Pray for those who make a commitment to Christ, that when they return home, they would stand strong as a witness for Christ.



# Swedish Institute

## A

### College of Health Sciences

#### New York, NY



**This Campus Has NOT Been Adopted**

**Known Christian Groups on Campus:**

No Known Gospel Witness

DAY  
20

President .....Michael S. Bottrill  
Type .....2-year, Private For-Profit  
Campus Housing.....No  
Student Population.....765  
Student-to-Faculty Ratio.....12 to 1



#### **Mission Statement**

“Swedish Institute educates students to become skilled, ethical, culturally competent and compassionate massage therapists, nurses, and allied health professionals serving the diverse communities of the Greater New York Metropolitan Area.”

#### **Prayer Request:**

1. Luke 10.2 Jesus said to them: “The harvest is plentiful, but the laborers are few; therefore beseech the Lord of the harvest to send out laborers into His harvest.”
2. Please continue to pray for a revival among the Christians students, faculty, and staff.
3. Pray that the revival will turn into an awakening among the non-Christian student, faculty, and staff.
4. Please pray for the students who may be living on campus. Pray for sexual purity in the dorms and on campus.
5. Please remember to pray for any international students who may be on campus. We are praying that they would be exposed to the gospel and receive Jesus as their savior. Pray for those who make a commitment to Christ, that when they return home, they would stand strong as a witness for Christ.



# Syracuse University

## Syracuse, NY



Chancellor & President ..... Kent Syverud  
 Type..... 4-year, Private Non-Profit  
 Campus Housing ..... Yes  
 Student Population ..... 21,322  
 Student-to-Faculty Ratio ..... 15 to 1  
International Students (2019) ..... 4,366 from at least 50 Countries  
 Australia, Bahamas, Bangladesh, Brazil, Canada, China, Colombia,  
 Ecuador, Egypt, France, Germany, Ghana, Greece, Hong Kong, India,  
 Indonesia, Iran, Israel, Italy, Jamaica, Japan, Jordan, Kenya, Kuwait,  
 Malaysia, Mexico, Mongolia, Nepal, Netherlands, Nigeria, Norway,  
 Oman, Pakistan, Peru, Philippines, Russia, Saudi Arabia, South Korea,  
 Spain, Sri Lanka, Sweden, Taiwan, Thailand, Turkey, Ukraine, United  
 Arab Emirates, United Kingdom, Venezuela, Vietnam.



### Prayer Request:

1. Luke 10.2 Jesus said to them: “The harvest is plentiful, but the laborers are few; therefore beseech the Lord of the harvest to send out laborers into His harvest.”
2. Please continue to pray for a revival among the Christians students, faculty, and staff.
3. Pray that the revival will turn into an awakening among the non-Christian student, faculty, and staff.
4. Please pray for the students who may be living on campus. Pray for sexual purity in the dorms and on campus.
5. Please remember to pray for any international students who may be on campus. We are praying that they would be exposed to the gospel and receive Jesus as their savior. Pray for those who make a commitment to Christ, that when they return home, they would stand strong as a witness for Christ.

### This Campus Has NOT Been Adopted

### Known Christian Groups on Campus:

#### Chaplains

Baptist Chaplain ..... Devon Bartholomew  
 Evangelical Christian Chaplain ..... Jay Koshy  
 Historical Black Church Chaplain .... Melvin Baker  
 Lutheran Chaplain ..... Gail Tiina  
 Associate Lutheran Chaplain ..... Jeff Kane  
 Catholic Chaplain ..... Fr. Gerry Waterman  
 Catholic Campus Minister ..... Jeremiah Deep  
 United Methodist Chaplain ..... Rhonda Chester

#### Student Groups

Bible Study Ministries ..... Sheila Xu  
 Brothers & Sisters in Christ ..... Alex Thevaranjan (Advisor)  
 Campus Bible Fellowship ..... Nicholas Magari  
 Catholic Association ..... Peter Tilmont  
 Christian Outreach ..... Joel Barnes  
 CRU ..... Joey Deaton  
 Fellowship of Christian Athletes ..... Rebecca Kantrowitz  
 Glorify God ..... Cameron Gray  
 Hope Christian Student Fellowship .. Amanda Spindler  
 Mustard Seed Fellowship ..... Audrey Lew  
 Orthodox Christian Fellowship ..... Rebecca Kantrowitz  
 The Impact Movement ..... Anita Frasier  
 The Vineyard ..... Rebecca Kantrowitz

### Vision Statement

“Syracuse University aspires to be a pre-eminent and inclusive student-focused research university, preparing engaged citizens, scholars, and leaders for participation in a changing global society.”



# Talmudical Seminary of Bobov Brooklyn, NY



**This Campus Has NOT Been Adopted**

**Known Christian Groups on Campus:**

No Known Gospel Witness

DAY  
22

President.....Not Available  
Type .....4-year, Private Non-Profit  
Campus Housing.....No  
Student Population.....423  
Student-to-Faculty Ratio.....14 to 1



## **Mission Statement**

“Talmudical Seminary of Bobov seeks to train students in the skills required for understanding, studying and mastering the Talmud and the considerable body of traditional Jewish thought. At the same time we are committed to the understanding that knowledge is a means to a larger end. We seek therefore to help students build a world outlook drawn from the ethical and moral concepts of Judaism. If scholarship is to have a significant value it must orient its students to a way of life that, by its own definition, is good and moral.”

## **Prayer Request:**

1. Luke 10.2 Jesus said to them: “The harvest is plentiful, but the laborers are few; therefore beseech the Lord of the harvest to send out laborers into His harvest.”
2. Please continue to pray for a revival among the Christians students, faculty, and staff.
3. Pray that the revival will turn into an awakening among the non-Christian student, faculty, and staff.
4. Please pray for the students who may be living on campus. Pray for sexual purity in the dorms and on campus.
5. Please remember to pray for any international students who may be on campus. We are praying that they would be exposed to the gospel and receive Jesus as their savior. Pray for those who make a commitment to Christ, that when they return home, they would stand strong as a witness for Christ.



# Talmudical Seminary Oholei Torah Brooklyn, NY



**This Campus Has NOT Been Adopted**

**Known Christian Groups on Campus:**

No Known Gospel Witness

DAY  
23

President..... Zalman Chein  
Type..... 4-year, Private Non-Profit  
Campus Housing ..... Yes  
Student Population ..... 331  
Student-to-Faculty Ratio ..... 14 to 1  
“There are approximately 30 [international](#) students at Talmudical Seminary Oholei Torah; they make up 9.7% of all total students.”



## **Mission Statement**

“Talmudical Seminary Oholei Torah seeks to train students in the skills required for understanding, studying and mastering the Talmud and the considerable body of traditional Jewish thought. At the same time we are committed to the understanding that knowledge is a means to a larger end. We seek therefore to help students build a world outlook drawn from the ethical and moral concepts of Judaism. If scholarship is to have a significant value it must orient its students to a way of life that, by its own definition, is good and moral.”



## **Prayer Request:**

1. Luke 10.2 Jesus said to them: “The harvest is plentiful, but the laborers are few; therefore beseech the Lord of the harvest to send out laborers into His harvest.”
2. Please continue to pray for a revival among the Christians students, faculty, and staff.
3. Pray that the revival will turn into an awakening among the non-Christian student, faculty, and staff.
4. Please pray for the students who may be living on campus. Pray for sexual purity in the dorms and on campus.
5. Please remember to pray for any international students who may be on campus. We are praying that they would be exposed to the gospel and receive Jesus as their savior. Pray for those who make a commitment to Christ, that when they return home, they would stand strong as a witness for Christ.



# Teachers College at Columbia University

## New York, NY



**This Campus Has NOT Been Adopted**  
**Known Christian Groups on Campus:**  
No Known Gospel Witness

DAY  
24

President ..... Thomas Bailey  
Type ..... 4-year, Private Non-Profit  
Campus Housing..... Yes  
Student Population..... 4,547  
Student-to-Faculty Ratio..... Unavailable  
“There are approximately 1,050 [international](#) students at Teachers College at Columbia University; they make up 23.1% of all total students.”

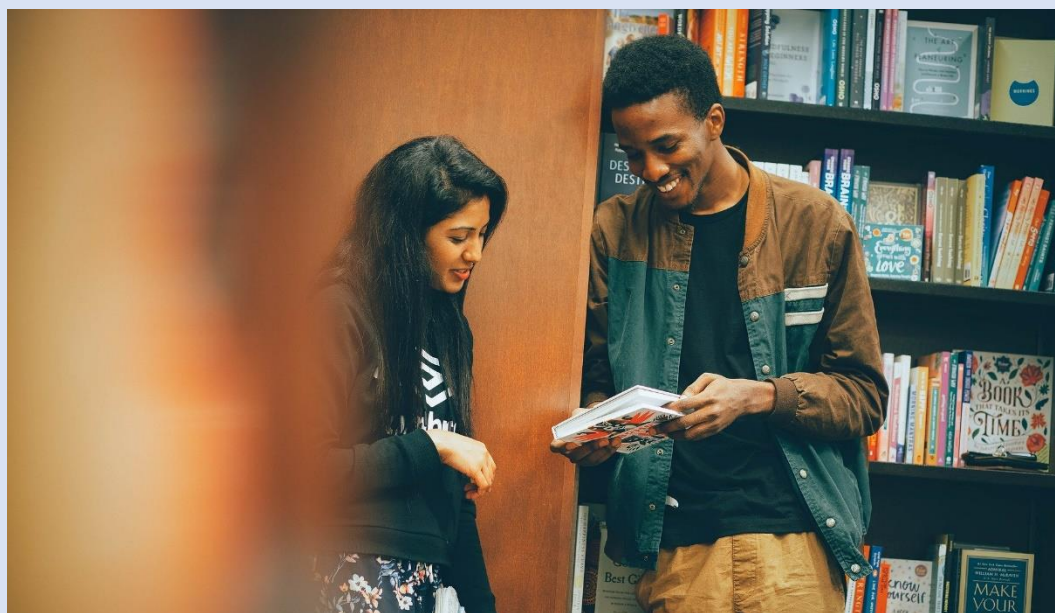


### **Message from the President**

“As President of Teachers College, Columbia University, it’s my pleasure to welcome you to the nation’s first and largest graduate school of education—a place whose founding vision was to bring educational opportunities to all members of society, and whose faculty and students, time and again during more than a century of leadership, have demonstrated the power of ideas to change the world across the disciplines of education, health and psychology....”

### **Prayer Request:**

1. Luke 10.2 Jesus said to them: “The harvest is plentiful, but the laborers are few; therefore beseech the Lord of the harvest to send out laborers into His harvest.”
2. Please continue to pray for a revival among the Christians students, faculty, and staff.
3. Pray that the revival will turn into an awakening among the non-Christian student, faculty, and staff.
4. Please pray for the students who may be living on campus. Pray for sexual purity in the dorms and on campus.
5. Please remember to pray for any international students who may be on campus. We are praying that they would be exposed to the gospel and receive Jesus as their savior. Pray for those who make a commitment to Christ, that when they return home, they would stand strong as a witness for Christ.



# The College of Saint Rose

## Albany, NY



**This Campus Has NOT Been Adopted**

**Known Christian Groups on Campus:**

Director of Spiritual Life .....Joan Horgan  
Director of Community Service and Social Justice  
.....Ken Scott  
Director of Mission Experience.....Sr. Sean Peters  
Brothers & Sisters in Christ.....?  
Catholic Student Organization.....Joan Horgan (Advisor)

DAY  
25

President.....Marcia J. White  
Type .....4-year, Private Non-Profit  
Campus Housing.....Yes  
Student Population.....3,863  
Student-to-Faculty Ratio.....14 to 1  
International Students (2019).....118 from at least 27 Countries  
Australia, Brazil, Canada, China, Colombia, Germany, India,  
Israel, Jamaica, Nepal, Saudi Arabia, United Kingdom, Vietnam.



### **Prayer Request:**

1. Luke 10.2 Jesus said to them: “The harvest is plentiful, but the laborers are few; therefore beseech the Lord of the harvest to send out laborers into His harvest.”
2. Please continue to pray for a revival among the Christians students, faculty, and staff.
3. Pray that the revival will turn into an awakening among the non-Christian student, faculty, and staff.
4. Please pray for the students who may be living on campus. Pray for sexual purity in the dorms and on campus.
5. Please remember to pray for any international students who may be on campus. We are praying that they would be exposed to the gospel and receive Jesus as their savior. Pray for those who make a commitment to Christ, that when they return home, they would stand strong as a witness for Christ.



### **Mission Statement**

“The College of Saint Rose community engages highly motivated undergraduate and graduate students in rigorous educational experiences. In the progressive tradition of the founding Sisters of St. Joseph of Carondelet, we welcome students from all religious and cultural backgrounds. In addition to developing their intellectual capacities, students have the opportunity to cultivate their creative and spiritual gifts in a diverse learning community that fosters integrity, interdependence, and mutual respect. The College delivers distinctive and comprehensive liberal arts and professional programs that inspire our graduates to be productive adults, critical thinkers, and motivated, caring citizens. Our engagement with the urban environment expands the setting for educational opportunities and encourages the Saint Rose community’s energetic involvement and effective leadership in society.”



# The College of Westchester

## White Plains, NY



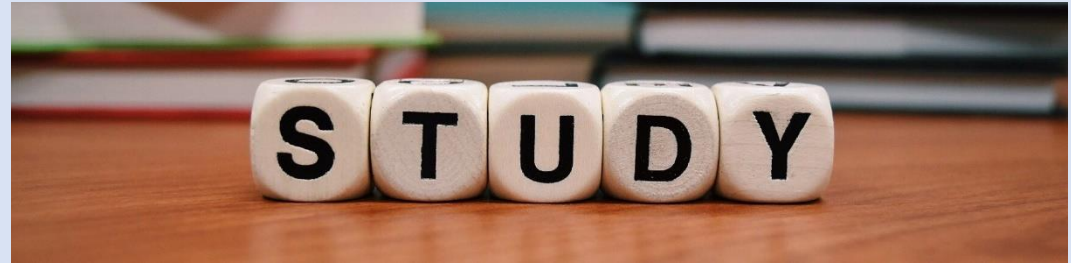
**This Campus Has NOT Been Adopted**

**Known Christian Groups on Campus:**

No Known Gospel Witness

DAY  
26

President ..... Mary Beth Del Balzo  
Type ..... 4-year, Private For-Profit  
Campus Housing ..... No  
Student Population ..... 934  
Student-to-Faculty Ratio ..... 22 to 1



### **Mission Statement**

“The College of Westchester graduates individuals who have completed transformative and purposeful educational experiences leading to careers that foster economic advancement. As an academically student-centered, culturally diverse college, CW is committed to providing the highest quality of education for all career and entrepreneurial-minded students through the delivery of a carefully constructed and focused curriculum, with input from regional employers and other institutional stakeholders. The College supports and encourages academic excellence, career advancement, professional integrity, financial responsibility and good citizenship through a distinctive and highly personal learning environment leading to upward economic mobility.”

### **Prayer Request:**

1. Luke 10.2 Jesus said to them: “The harvest is plentiful, but the laborers are few; therefore beseech the Lord of the harvest to send out laborers into His harvest.”
2. Please continue to pray for a revival among the Christians students, faculty, and staff.
3. Pray that the revival will turn into an awakening among the non-Christian student, faculty, and staff.
4. Please pray for the students who may be living on campus. Pray for sexual purity in the dorms and on campus.
5. Please remember to pray for any international students who may be on campus. We are praying that they would be exposed to the gospel and receive Jesus as their savior. Pray for those who make a commitment to Christ, that when they return home, they would stand strong as a witness for Christ.



# The Juilliard School

## New York, NY



**This Campus Has NOT Been Adopted**

**Known Christian Groups on Campus:**

Julliard Christian Fellowship..... ?

Korean Christian Fellowship..... ?

DAY

27

President .....Damian Woetzel  
Type .....4-year, Private Non-Profit  
Campus Housing..... Yes  
Student Population.....961  
Student-to-Faculty Ratio.....5 to 1  
International Students (2019) .....267 from at least 27 Countries  
Australia, Brazil, Canada, China, Ecuador, France, Germany,  
Greece, Hong Kong, India, Indonesia, Israel, Italy, Japan,  
Netherlands, Norway, Philippines, Russia, Singapore. South Korea,  
Spain, Sweden, Taiwan, Thailand, United Kingdom, Venezuela.



### **Mission Statement**

“The mission of The Juilliard School is to provide the highest caliber of artistic education for gifted musicians, dancers, and actors from around the world, so that they may achieve their fullest potential as artists, leaders, and global citizens.”

### **Prayer Request:**

1. Luke 10.2 Jesus said to them: “The harvest is plentiful, but the laborers are few; therefore beseech the Lord of the harvest to send out laborers into His harvest.”
2. Please continue to pray for a revival among the Christians students, faculty, and staff.
3. Pray that the revival will turn into an awakening among the non-Christian student, faculty, and staff.
4. Please pray for the students who may be living on campus. Pray for sexual purity in the dorms and on campus.
5. Please remember to pray for any international students who may be on campus. We are praying that they would be exposed to the gospel and receive Jesus as their savior. Pray for those who make a commitment to Christ, that when they return home, they would stand strong as a witness for Christ.



# The King's College

## New York, NY



### This Campus Has NOT Been Adopted

#### Known Christian Groups on Campus:

“We aim to help students know Jesus as the defining reality of their lives, capture a vision of God that overcomes competing loyalties, and form a life built upon Scripture and belonging to a local church.”

DAY  
28

President.....Tim Gibson  
Type .....4-year, Private Non-Profit  
Campus Housing.....Yes  
Student Population.....442  
Student-to-Faculty Ratio.....12 to 1  
International Students (2019).....19 from at least 13 Countries  
Canada, China, Germany, Italy, Jamaica, Malaysia, Mongolia,  
Pakistan, Peru, Singapore, Spain, United Kingdom, Vietnam.



#### Mission Statement

“Through its commitment to the truths of Christianity and a biblical worldview, The King's College seeks to transform society by preparing students for careers in which they help to shape and eventually to lead strategic public and private institutions, and by supporting faculty members as they directly engage culture through writing and speaking publicly on critical issues.”

#### Prayer Request:

1. Luke 10.2 Jesus said to them: “The harvest is plentiful, but the laborers are few; therefore beseech the Lord of the harvest to send out laborers into His harvest.”
2. Please continue to pray for a revival among the Christians students, faculty, and staff.
3. Pray that the revival will turn into an awakening among the non-Christian student, faculty, and staff.
4. Please pray for the students who may be living on campus. Pray for sexual purity in the dorms and on campus.
5. Please remember to pray for any international students who may be on campus. We are praying that they would be exposed to the gospel and receive Jesus as their savior. Pray for those who make a commitment to Christ, that when they return home, they would stand strong as a witness for Christ.



# The New School

## New York, NY



**This Campus Has NOT Been Adopted**

**Known Christian Groups on Campus:**  
Unable to This Access Information

DAY  
29

President ..... Dwight A. McBride  
Type..... 4-year, Private Non-Profit  
Campus Housing ..... Yes  
Student Population ..... 9,047  
Student-to-Faculty Ratio ..... 9 to 1  
International Students (2019) ..... 3,589 from at least 48 Countries  
Australia, Bangladesh, Brazil, Canada, China, Colombia, Ecuador,  
Egypt, France, Germany, Ghana, Greece, Hong Kong, India, Indonesia,  
Iran, Israel, Italy, Jamaica, Japan, Jordon, Kenya, Kuwait, Malaysia,  
Mexico, Mongolia, Nepal, Netherlands, Nigeria, Norway, Oman,  
Pakistan, Peru, Philippines, Russia, Saudi Arabia, Singapore, South  
Korea, Spain, Sri Lanka, Sweden, Taiwan, Thailand, Turkey, Ukraine,  
United Kingdom, Venezuela, Vietnam.



### **Prayer Request:**

1. Luke 10.2 Jesus said to them: “The harvest is plentiful, but the laborers are few; therefore beseech the Lord of the harvest to send out laborers into His harvest.”
2. Please continue to pray for a revival among the Christians students, faculty, and staff.
3. Pray that the revival will turn into an awakening among the non-Christian student, faculty, and staff.
4. Please pray for the students who may be living on campus. Pray for sexual purity in the dorms and on campus.
5. Please remember to pray for any international students who may be on campus. We are praying that they would be exposed to the gospel and receive Jesus as their savior. Pray for those who make a commitment to Christ, that when they return home, they would stand strong as a witness for Christ.



### **Mission Statement**

“The New School prepares students to understand, contribute to, and succeed in a rapidly changing society, thus making the world a better and more just place. We will ensure that our students develop both the skills that a sound education provides and the competencies essential for success and leadership in the emerging creative economy. We will also lead in generating practical and theoretical knowledge that enables people to better understand our world and improve conditions for local and global communities.”



# Tompkins Cortland Community College

## Dryden, NY



**This Campus Has NOT Been Adopted**  
**Known Christian Groups on Campus:**  
CRU .....Cathy Christopher

DAY  
30

President..... Paul Reifenheiser  
Type ..... 2-year, Public  
Campus Housing..... Yes  
Student Population ..... 4,764  
Student-to-Faculty Ratio..... 11 to 1  
“There are approximately 65 international students at Tompkins Cortland Community College; they make up 2.7% of all total students.”



### **Mission Statement**

“We serve our community by meeting educational needs, creating an environment for student success, and preparing our students and ourselves for citizenship in a global society.”

### **Prayer Request:**

1. Luke 10.2 Jesus said to them: “The harvest is plentiful, but the laborers are few; therefore beseech the Lord of the harvest to send out laborers into His harvest.”
2. Please continue to pray for a revival among the Christians students, faculty, and staff.
3. Pray that the revival will turn into an awakening among the non-Christian student, faculty, and staff.
4. Please pray for the students who may be living on campus. Pray for sexual purity in the dorms and on campus.
5. Please remember to pray for any international students who may be on campus. We are praying that they would be exposed to the gospel and receive Jesus as their savior. Pray for those who make a commitment to Christ, that when they return home, they would stand strong as a witness for Christ.

