

New York Ministry Network

31 Day Prayer Guide



Volume VI

Dear Friends,

Once again, we want to thank you for your participation in this vital ministry. We know that prayer still changes “things”. God answers prayer! In the past ten years we have seen an increase of over 169% in Chi Alpha workers. That is awesome! But we have much more ground to cover. According to the everycampus.com website more than 2,000 campuses in the USA still have no known Gospel Witness.

This is now the sixth Prayer Guide for the New York Ministry Network. Our simple goal is to do what Jesus asked us to do, pray for laborers: Luke 10.2 *“The harvest is plentiful, but the laborers are few; therefore, plead with the Lord of the harvest to send out laborers into His harvest”* (NASB). We, at Chi Alpha, are asking you to “*plead*” with the Lord of the harvest for laborers. We believe that God wants to send a revival to the campuses of America and we need the workers to be in place! We need your help.

In this guide, like the last, we have tried to find all the Christian organizations on each campus. (It is likely that we missed a few.) Please pray for the student leaders of the Christian groups listed. They are the “soldiers on the front lines”. Some of them may not even know that they are in spiritual warfare. Pray that the Holy Spirit awakens them to that fact. (Some student groups show a question mark instead of a student leader. This happens only when a student leader or advisor could not be located.)

You will notice that several schools have chaplains and ministry staff. We never know where they stand on Christ, Sin, Biblical Authority, etc. Pray that, regardless of where they stand, that God works in them and through them.

This prayer guide was compiled with data from the list found at “The National Center for Education Statistics” ([NCES](http://nces.edu)) and from each school’s own website. For the international student statistics, we used a website called “[College Factual](http://CollegeFactual.com)”. The international statistics are under the “Student Life” tab.

Thank You again for investing time into this next generation. Only eternity will tell what we helped along and what we were able to hinder.

Be Blessed,
Joe and Heidi Barrale
[Assemblies of God U.S. Missionaries](http://AssembliesofGodU.S.Missionaries.org)
[Chi Alpha](http://ChiAlpha.org) / Adopt-A-Campus.org
[Blog at Adopt-A-Campus](http://BlogatAdopt-A-Campus.org)

A List of Schools Included in this Prayer Guide

Day 1 Rockland Community College

Day 2 Russell Sage College

Day 3 Saint Elizabeth College of Nursing

Day 4 Saint John Fisher College

Day 5 Samaritan Hospital School of Nursing

Day 6 Sarah Lawrence College

Day 7 Schenectady County Community College

Day 8 School of Visual Arts

Day 9 Seminar L'moros Bais Yaakov

Day 10 Siena College

Day 11 Skidmore College

Day 12 St Bonaventure University

Day 13 St Francis College

Day 14 St Lawrence University

Day 15 St Paul's School of Nursing-Queens

Day 16 St Paul's School of Nursing-Staten Island

Day 17 St. John's University-New York

Day 18 St. Joseph's College of Nursing

Day 19 St. Joseph's College-New York

Day 20 St. Peter's Hospital College of Nursing

Day 21 St. Thomas Aquinas College

Day 22 State University of New York at New Paltz

Day 23 Suffolk County Community College

Day 24 Sullivan County Community College

Day 25 SUNY Adirondack

Day 26 SUNY at Albany

Day 27 SUNY at Fredonia

Day 28 SUNY at Purchase College

Day 29 SUNY Brockport

Day 30 SUNY Broome Community College

Day 31 SUNY College at Geneseo

Rockland Community College

Suffern, NY



This Campus Has NOT Been Adopted

DAY
1

Known Christian Groups on Campus:

Christian Fellowship Michael and Maureen VerSchneider (Advisors)

President Michael A. Baston
Type 2-year, Public
Campus Housing No
Student Population 5,735
Student-to-Faculty Ratio 20 to 1
“There are approximately 110 international students at Rockland Community College; they make up 1.6% of all total students.”



Mission Statement

“Rockland Community College provides purpose driven educational opportunities and guidance in a diverse, affordable, and accessible environment, empowering individuals to positively transform themselves and their communities.

In the conservatory environment, you will work all day, every day strictly on your craft. Our highly disciplined training programs give you the tools for a successful career as an actor in film, television and musical theater”

Prayer Request:

1. Luke 10.2 Jesus said to them: “The harvest is plentiful, but the laborers are few; therefore beseech the Lord of the harvest to send out laborers into His harvest.”
2. Please continue to pray for a revival among the Christians students, faculty, and staff.
3. Pray that the revival will turn into an awakening among the non-Christian student, faculty, and staff.
4. Please pray for the students who may be living on campus. Pray for sexual purity in the dorms and on campus.
5. Please remember to pray for any international students who may be on campus. We are praying that they would be exposed to the gospel and receive Jesus as their savior. Pray for those who make a commitment to Christ, that when they return home, they would stand strong as a witness for Christ.



Russell Sage College

Troy, NY



This Campus Has NOT Been Adopted

Known Christian Groups on Campus:

Protestant ChaplainDarren Gundrum
InterVarsity?
Newman Club?

DAY
2

PresidentChristopher Ames
Type4-year, Private Non-Profit
Campus Housing.....Yes
Student Population.....2,389
Student-to-Faculty Ratio.....11 to 1
International Students (2019)24 from at least 11 Countries
Bangladesh, China, Hong Kong, India, Kenya, Nepal, Pakistan,
Saudi Arabia, Taiwan, Thailand, Vietnam.

***Additional Campus:**
Albany, NY



Mission Statement

“Russell Sage College is a community of scholars committed to empowering students ...

TO BE: to provide the individual student with the opportunity and means to develop and advance personally and professionally, and thus to be successful in achieving life goals.

TO KNOW: to contribute to the larger society a group of diverse, thoughtful and competent citizen-leaders who continue to be engaged in the pursuit of lifelong learning.

TO DO: to translate learning into action and application, recognizing the obligation of educated persons to lead and to serve their communities.”

Prayer Request:

1. Luke 10.2 Jesus said to them: “The harvest is plentiful, but the laborers are few; therefore beseech the Lord of the harvest to send out laborers into His harvest.”
2. Please continue to pray for a revival among the Christians students, faculty, and staff.
3. Pray that the revival will turn into an awakening among the non-Christian student, faculty, and staff.
4. Please pray for the students who may be living on campus. Pray for sexual purity in the dorms and on campus.
5. Please remember to pray for any international students who may be on campus. We are praying that they would be exposed to the gospel and receive Jesus as their savior. Pray for those who make a commitment to Christ, that when they return home, they would stand strong as a witness for Christ.



Saint Elizabeth College of Nursing Utica, NY



This Campus Has NOT Been Adopted

Known Christian Groups on Campus:

No Known Gospel Witness

DAY
3

President and Dean..... Varinya Sheppard
Type..... 2-year, Private Non-Profit
Campus Housing No
Student Population 155
Student-to-Faculty Ratio 7 to 1
“There are approximately 4 international students at Saint Elizabeth College of Nursing; they make up 2.0% of all total students.”



Prayer Request:

1. Luke 10.2 Jesus said to them: “The harvest is plentiful, but the laborers are few; therefore beseech the Lord of the harvest to send out laborers into His harvest.”
2. Please continue to pray for a revival among the Christians students, faculty, and staff.
3. Pray that the revival will turn into an awakening among the non-Christian student, faculty, and staff.
4. Please pray for the students who may be living on campus. Pray for sexual purity in the dorms and on campus.
5. Please remember to pray for any international students who may be on campus. We are praying that they would be exposed to the gospel and receive Jesus as their savior. Pray for those who make a commitment to Christ, that when they return home, they would stand strong as a witness for Christ.

Mission Statement

“The mission of St. Elizabeth college of nursing is to provide a strong foundation of theory and nursing practice within an environment of academic excellence that promotes active citizenship and a desire for life-long learning.”



Saint John Fisher College

Rochester, NY



President..... Gerard J. Rooney
Type 4-year, Private Non-Profit
Campus Housing..... Yes
Student Population 3,610
Student-to-Faculty Ratio 12 to 1
International Students (2019)..... 7 from at least 4 Countries
Canada, Netherlands, Saudi Arabia, South Korea.



Prayer Request:

1. Luke 10.2 Jesus said to them: “The harvest is plentiful, but the laborers are few; therefore beseech the Lord of the harvest to send out laborers into His harvest.”
2. Please continue to pray for a revival among the Christians students, faculty, and staff.
3. Pray that the revival will turn into an awakening among the non-Christian student, faculty, and staff.
4. Please pray for the students who may be living on campus. Pray for sexual purity in the dorms and on campus.
5. Please remember to pray for any international students who may be on campus. We are praying that they would be exposed to the gospel and receive Jesus as their savior. Pray for those who make a commitment to Christ, that when they return home, they would stand strong as a witness for Christ.

This Campus Has NOT been Adopted

Known Christian Groups on Campus:

Campus Ministry Director..... Fr. Kevin Mannara
Campus Ministry Assistant
..... Sarah Mancini-Goebert
..... Jonathan Schott
Fisher Cru..... ?



Mission Statement

“St. John Fisher College is a collaborative community dedicated to teaching, learning, and scholarship in a student-centered educational environment. The College is guided by its liberal arts tradition and its Catholic heritage, as expressed in the motto of its founders, the Basilian Fathers: “teach me goodness, discipline, and knowledge.” Fisher engages individuals in lives of intellectual inquiry, professional integrity, and civic responsibility, where diversity and service to others are valued and practiced.”



DAY
4

Samaritan Hospital School of Nursing Troy, NY

President James K. Reed
Type 2-year, Private Non-Profit
Campus Housing No
Student Population 152
Student-to-Faculty Ratio 6 to 1



Prayer Request:

1. Luke 10.2 Jesus said to them: “The harvest is plentiful, but the laborers are few; therefore beseech the Lord of the harvest to send out laborers into His harvest.”
2. Please continue to pray for a revival among the Christians students, faculty, and staff.
3. Pray that the revival will turn into an awakening among the non-Christian student, faculty, and staff.
4. Please pray for the students who may be living on campus. Pray for sexual purity in the dorms and on campus.
5. Please remember to pray for any international students who may be on campus. We are praying that they would be exposed to the gospel and receive Jesus as their savior. Pray for those who make a commitment to Christ, that when they return home, they would stand strong as a witness for Christ.



This Campus Has NOT Been Adopted

Known Christian Groups on Campus:

A Catholic Institution: details on the school were hard to find.

DAY
5

Mission Statement

“We, St. Peter's Health Partners and Trinity Health, serve together in the spirit of the gospel as a compassionate and transforming healing presence within our communities.”

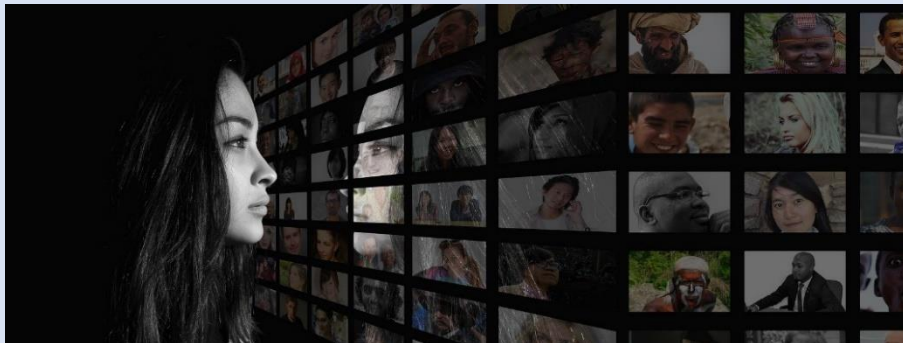


Sarah Lawrence College Bronxville, NY

President.....Cristle Collins Judd
Type4-year, Private Non-Profit
Campus Housing.....Yes
Student Population.....1,506
Student-to-Faculty Ratio.....10 to 1

International Students (2019).....200 from at least 35 Countries

Australia, Bangladesh, Brazil, Canada, China, Colombia, Ecuador, France, Germany, Greece, Hong Kong, India, Indonesia, Italy, Japan, Jordan, Kuwait, Malaysia, Mexico, Netherlands, Nigeria, Pakistan, Philippines, Russia, Singapore, Spain, Sri Lanka, Sweden, Taiwan, Thailand, United Kingdom, Venezuela, Vietnam.



Prayer Request:

1. Luke 10.2 Jesus said to them: “The harvest is plentiful, but the laborers are few; therefore beseech the Lord of the harvest to send out laborers into His harvest.”
2. Please continue to pray for a revival among the Christians students, faculty, and staff.
3. Pray that the revival will turn into an awakening among the non-Christian student, faculty, and staff.
4. Please pray for the students who may be living on campus. Pray for sexual purity in the dorms and on campus.
5. Please remember to pray for any international students who may be on campus. We are praying that they would be exposed to the gospel and receive Jesus as their savior. Pray for those who make a commitment to Christ, that when they return home, they would stand strong as a witness for Christ.



This Campus Has NOT Been Adopted

Known Christian Groups on Campus:

No Known Gospel Witness

Mission Statement

“At Sarah Lawrence College our mission is to graduate world citizens who are diverse in every definition of the word, who take intellectual and creative risks, who cross disciplinary boundaries, and who are able to sustain exceptional academic discipline within a framework of humanistic values and concern for community. Our unique educational practices provide our students with the opportunity to study intensively in small classes, to engage in independent research, and to spend unparalleled amounts of time working one-on-one with an exceptional faculty of scholars and artists, creating a tailored academic program of students' own design. Our goal is to instill a lifelong intellectual curiosity and nimbleness, as well as the confidence

and entrepreneurial spirit to embrace a broad range of personal, professional, and creative pursuits. We thus prepare students to think and act independently so that they will tackle the problems of, and thrive in, a complex and rapidly evolving world.”



DAY

6

Schenectady County Community College

Schenectady, NY



This Campus Has NOT Been Adopted

Known Christian Groups on Campus:

Christian Fellowship?

DAY

7

PresidentSteady Moono
Type2-year, Public
Campus Housing.....No
Student Population.....4,015
Student-to-Faculty Ratio.....18 to 1



Mission Statement

“We are an inclusive, collaborative community—built on a foundation of excellence in teaching and student-support services—which empowers our students and strengthens our communities.”

Prayer Request:

1. Luke 10.2 Jesus said to them: “The harvest is plentiful, but the laborers are few; therefore beseech the Lord of the harvest to send out laborers into His harvest.”
2. Please continue to pray for a revival among the Christians students, faculty, and staff.
3. Pray that the revival will turn into an awakening among the non-Christian student, faculty, and staff.
4. Please pray for the students who may be living on campus. Pray for sexual purity in the dorms and on campus.
5. Please remember to pray for any international students who may be on campus. We are praying that they would be exposed to the gospel and receive Jesus as their savior. Pray for those who make a commitment to Christ, that when they return home, they would stand strong as a witness for Christ.



School of Visual Arts

New York, NY



This Campus Has NOT Been Adopted
Known Christian Groups on Campus:
No Known Gospel Witness

DAY
8

President.....David Rhodes
Type4-year, Private For-Profit
Campus HousingYes
Student Population.....3,692
Student-to-Faculty Ratio.....6 to 1
International Students (2019)2,117 from at least 43 Countries

Australia, Brazil, Canada, China, Colombia, Ecuador, Egypt, France, Germany, Ghana, Greece, Hong Kong, India, Indonesia, Iran, Israel, Italy, Japan, Kenya, Kuwait, Malaysia, Mexico, Mongolia, Netherlands, Nigeria, Norway, Pakistan, Peru, Philippines, Russia, Saudi Arabia, Singapore, South Korea, Spain, Sweden, Taiwan, Thailand, Turkey, Ukraine, United Arab Emirates, United Kingdom, Venezuela, Vietnam.

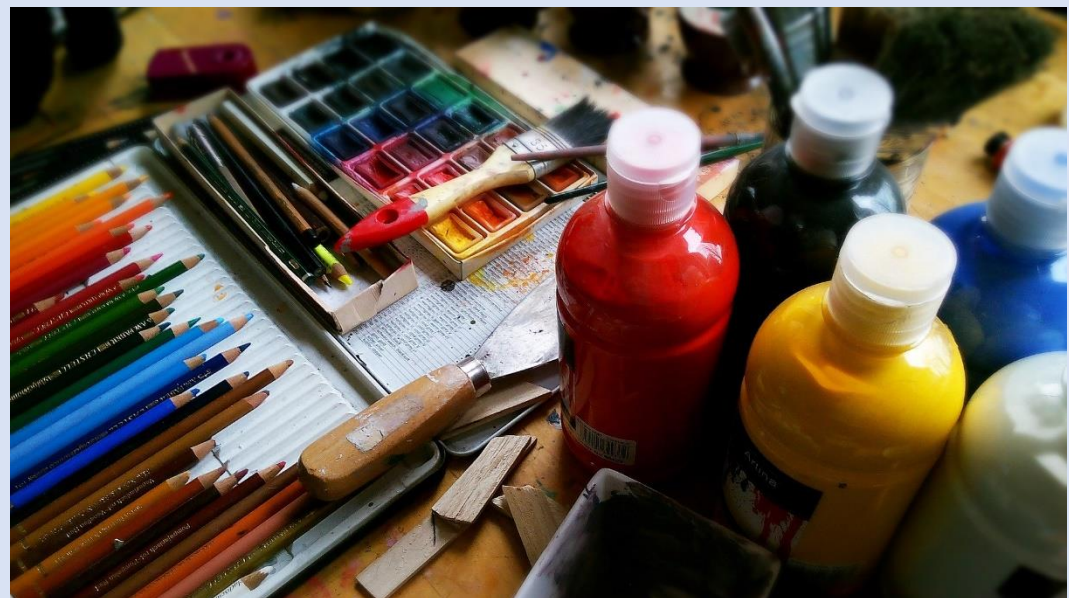


Mission Statement

“To educate future generations of artists, designers and creative professionals.”

Prayer Request:

1. Luke 10.2 Jesus said to them: “The harvest is plentiful, but the laborers are few; therefore beseech the Lord of the harvest to send out laborers into His harvest.”
2. Please continue to pray for a revival among the Christians students, faculty, and staff.
3. Pray that the revival will turn into an awakening among the non-Christian student, faculty, and staff.
4. Please pray for the students who may be living on campus. Pray for sexual purity in the dorms and on campus.
5. Please remember to pray for any international students who may be on campus. We are praying that they would be exposed to the gospel and receive Jesus as their savior. Pray for those who make a commitment to Christ, that when they return home, they would stand strong as a witness for Christ.



Seminar L'moros Bais Yaakov

Brooklyn, NY

PresidentHenry N.Hirsch
Type2-year, Private Non-Profit
Campus Housing.....No
Student Population.....504
Student-to-Faculty Ratio.....27 to 1



Prayer Request:

1. Luke 10.2 Jesus said to them: “The harvest is plentiful, but the laborers are few; therefore beseech the Lord of the harvest to send out laborers into His harvest.”
2. Please continue to pray for a revival among the Christians students, faculty, and staff.
3. Pray that the revival will turn into an awakening among the non-Christian student, faculty, and staff.
4. Please pray for the students who may be living on campus. Pray for sexual purity in the dorms and on campus.
5. Please remember to pray for any international students who may be on campus. We are praying that they would be exposed to the gospel and receive Jesus as their savior. Pray for those who make a commitment to Christ, that when they return home, they would stand strong as a witness for Christ.



This Campus Has NOT Been Adopted

Known Christian Groups on Campus:

No Known Gospel Witness

DAY

9



Mission Statement

“Seminar L'Moros Bais Yaakov provides programs in Judaic studies to prepare students to teach Judaic studies at the preschool and elementary school levels.”



Siena College Loudonville, NY



President Christopher P. Gibson
Type 4-year, Private Non-Profit
Campus Housing..... Yes
Student Population..... 3,425
Student-to-Faculty Ratio..... 13 to 1
International Students (2019) 83 from at least 27 Countries
Australia, Bangladesh, Brazil, Canada, China, Egypt, France,
Germany, Ghana, Greece, India, Italy, Jamaica, Japan, Nepal,
Netherlands, Nigeria, Norway, Pakistan, Peru, Saudi Arabia, Spain,
Sweden, United Kingdom, Vietnam.



Prayer Request:

1. Luke 10.2 Jesus said to them: “The harvest is plentiful, but the laborers are few; therefore beseech the Lord of the harvest to send out laborers into His harvest.”
2. Please continue to pray for a revival among the Christians students, faculty, and staff.
3. Pray that the revival will turn into an awakening among the non-Christian student, faculty, and staff.
4. Please pray for the students who may be living on campus. Pray for sexual purity in the dorms and on campus.
5. Please remember to pray for any international students who may be on campus. We are praying that they would be exposed to the gospel and receive Jesus as their savior. Pray for those who make a commitment to Christ, that when they return home, they would stand strong as a witness for Christ.

This Campus Has NOT Been Adopted

DAY
10

Known Christian Groups on Campus:

Chaplain of the College..... Fr. Lawrence C. Anderson
Assistant Campus Minister Nicholas A. Ascoti
Associate Campus Minister Fr. Roberto Serrano
Music Minister Gabrielle C. Tegiacchi
Cru..... Amanda Quick
Orthodox Christian Student Assoc.... ?
Revival ?



Mission Statement

“Siena College is a learning community advancing the ideals of a liberal arts education, rooted in its identity as a Franciscan and Catholic institution.”



Skidmore College

Saratoga Springs, PA

President Marc C. Conner
Type 4-year, Private Non-Profit
Campus Housing Yes
Student Population 2,582
Student-to-Faculty Ratio 8 to 1
International Students (2019) 302 from at least 36 Countries
Australia, Bahamas, Bangladesh, Brazil, Canada, China, Ecuador, France, Germany, Ghana, Greece, Hong Kong, India, Indonesia, Israel, Jamaica, Japan, Jordan, Kenya, Malaysia, Netherlands, Nigeria, Oman, Pakistan, Peru, Philippines, Russia, Singapore, South Korea, Spain, Sweden, Taiwan, Turkey, United Kingdom, Vietnam.



Prayer Request:

1. Luke 10.2 Jesus said to them: “The harvest is plentiful, but the laborers are few; therefore beseech the Lord of the harvest to send out laborers into His harvest.”
2. Please continue to pray for a revival among the Christians students, faculty, and staff.
3. Pray that the revival will turn into an awakening among the non-Christian student, faculty, and staff.
4. Please pray for the students who may be living on campus. Pray for sexual purity in the dorms and on campus.
5. Please remember to pray for any international students who may be on campus. We are praying that they would be exposed to the gospel and receive Jesus as their savior. Pray for those who make a commitment to Christ, that when they return home, they would stand strong as a witness for Christ.



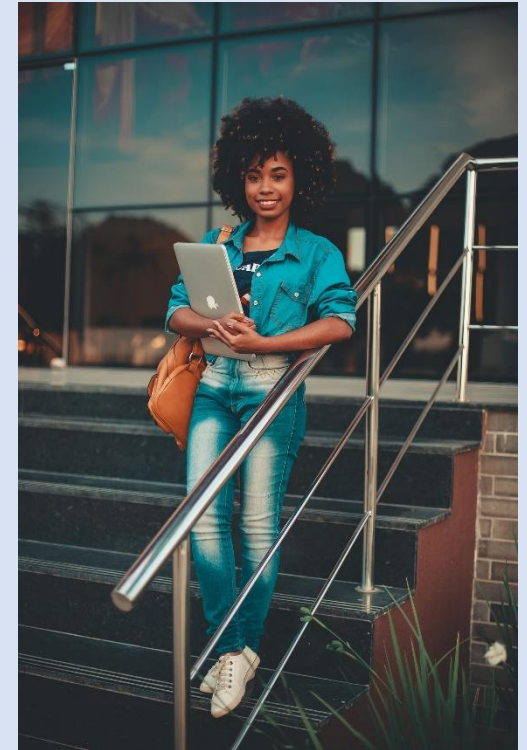
This Campus Has NOT Been Adopted

Known Christian Groups on Campus:

Director of Religious and Spiritual Life...Parker Digory
InterVarsity (Christian Fellowship) .. ?
Lift Every Voice Gospel Choir ?
Newman Club..... ?

Mission Statement

“The principal mission of Skidmore College is the education of predominantly full-time undergraduates, a diverse population of talented students who are eager to engage actively in the learning process. The college seeks to prepare liberally educated graduates to continue their quest for knowledge and to make the choices required of informed, responsible citizens. Skidmore faculty and staff create a challenging yet supportive environment that cultivates students’ intellectual and personal excellence, encouraging them to expand their expectations of themselves while they enrich their academic understanding.”



DAY
11

St Bonaventure University

Saint Bonaventure, NY



This Campus Has NOT Been Adopted

DAY
12

Known Christian Groups on Campus:

University Chaplain Fr. Greg Jakubowicz
Fellowship of Christian Athletes..... ?
InterVarsity ?
Mountain Community Leaders ?
Search Retreat Team ?
Vocation Group..... ?

President Joseph E. Zimmer
Type..... 4-year, Private Not-Profit
Campus Housing Yes
Student Population 2,540
Student-to-Faculty Ratio 12 to 1
International Students (2019) 66 from at least 17 Countries

Bahamas, Brazil, Canada, China, Germany, Ghana, Hong Kong, India, Italy, Japan, Nigeria, Russia, Saudi Arabia, Spain, Sweden, United Kingdom, Vietnam.

Missions Statement

“St. Bonaventure is a Catholic university dedicated to educational excellence as informed by our Franciscan and liberal arts traditions. In the words of our patron, we believe that there should be “no knowledge without love,” and thus seek to transform the lives of our students, inspiring in them a lifelong commitment to service and citizenship.”

“St. Bonaventure embraces students, faculty and staff of all faiths and cultures and strives to bring out the best in every individual through meaningful relationships. As an academic and spiritual community, we endeavor to prepare our students for the challenges they will face in their professional careers and personal lives.”



Prayer Request:

1. Luke 10.2 Jesus said to them: “The harvest is plentiful, but the laborers are few; therefore beseech the Lord of the harvest to send out laborers into His harvest.”
2. Please continue to pray for a revival among the Christians students, faculty, and staff.
3. Pray that the revival will turn into an awakening among the non-Christian student, faculty, and staff.
4. Please pray for the students who may be living on campus. Pray for sexual purity in the dorms and on campus.
5. Please remember to pray for any international students who may be on campus. We are praying that they would be exposed to the gospel and receive Jesus as their savior. Pray for those who make a commitment to Christ, that when they return home, they would stand strong as a witness for Christ.



St Francis College

Brooklyn Heights, NY



President..... Miguel Martinez-Saenz
Type..... 4-year, Private Non-Profit
Campus Housing Yes
Student Population 2,735
Student-to-Faculty Ratio 15 to 1
International Students (2019)..... 192 from at least 26 Countries
Australia, Bangladesh, Brazil, Canada, China, Colombia, France,
Germany, Greece, Hong Kong, India, Italy, Jamaica, Japan, Mexico,
Netherlands, Nigeria, Russia, South Korea, Spain, Sweden,
Thailand, United Kingdom, Venezuela, Vietnam.



Prayer Request:

1. Luke 10.2 Jesus said to them: “The harvest is plentiful, but the laborers are few; therefore beseech the Lord of the harvest to send out laborers into His harvest.”
2. Please continue to pray for a revival among the Christians students, faculty, and staff.
3. Pray that the revival will turn into an awakening among the non-Christian student, faculty, and staff.
4. Please pray for the students who may be living on campus. Pray for sexual purity in the dorms and on campus.
5. Please remember to pray for any international students who may be on campus. We are praying that they would be exposed to the gospel and receive Jesus as their savior. Pray for those who make a commitment to Christ, that when they return home, they would stand strong as a witness for Christ.

This Campus Has NOT Been Adopted

Known Christian Groups on Campus:

Office of Mission, Ministry & Interfaith Dialogue

Director..... Alexandria M. Egler

Assistant Director Timothy Nagy

Chaplain..... Fr. Mark Paul Amatrucola

Safe Haven Bible Club ?

Mission Statement

“St. Francis College is a private, independent, co-educational, urban college whose Franciscan and Catholic traditions underpin its commitment to academic excellence, spiritual and moral values, physical fitness, social responsibility, and life-long learning. We educate the whole person for a full, relational life, developing the students’ talents and abilities to form confident alumni well prepared for graduate study, for meaningful, fulfilling careers, as well as for collaborative, service-oriented leadership...”



St Lawrence University

Canton, NY



This Campus Has NOT Been Adopted

Known Christian Groups on Campus:

University ChaplainShaun Whitehead
Musician in Residence Sondra Goldsmith Proctor
Agape?
The Newman Club?

DAY
14

President..... Kathryn A. Morris
Type..... 4-year, Private Non-Profit
Campus Housing Yes
Student Population 2,319
Student-to-Faculty Ratio 10 to 1

International Students (2019)..... 225 from at least 32 Countries

Australia, Bahamas, Bangladesh, Brazil, Canada, China, Colombia, Ecuador, Germany, Ghana, Greece, India, Iran, Israel, Italy, Jamaica, Japan, Kenya, Mexico, Netherlands, Nigeria, Pakistan, Philippines, Russia, South Korea, Spain, Sri Lanka, Sweden, Turkey, Ukraine, United Kingdom, Vietnam.



Mission Statement

“The mission of St. Lawrence University is to provide an inspiring and demanding undergraduate education in the liberal arts to students selected for their seriousness of purpose and intellectual promise.”

Prayer Request:

1. Luke 10.2 Jesus said to them: “The harvest is plentiful, but the laborers are few; therefore beseech the Lord of the harvest to send out laborers into His harvest.”
2. Please continue to pray for a revival among the Christians students, faculty, and staff.
3. Pray that the revival will turn into an awakening among the non-Christian student, faculty, and staff.
4. Please pray for the students who may be living on campus. Pray for sexual purity in the dorms and on campus.
5. Please remember to pray for any international students who may be on campus. We are praying that they would be exposed to the gospel and receive Jesus as their savior. Pray for those who make a commitment to Christ, that when they return home, they would stand strong as a witness for Christ.



St Paul's School of Nursing-Queens

Rego Park, NY



This Campus Has NOT Been Adopted

Known Christian Groups on Campus:

No Known Gospel Witness

DAY
15

President.....Paul Ferrise
Type2-year, Private For-Profit
Campus Housing.....No
Student Population.....747
Student-to-Faculty Ratio.....24 to 1



Mission Statement

“The mission of the nursing and allied health programs at Saint Paul’s School of Nursing is to serve the needs of the community by offering an excellent education exemplifying the highest standards for nursing practice. Nursing is both an art and a science providing a human service. The core values of respect, integrity, compassion and excellence are embedded throughout the curriculum as the foundation for providing care to all. The mission and purpose of Saint Paul’s School of Nursing guides the planning, implementation, and evaluation of the curriculum and the services provided by the School.”

Prayer Request:

1. Luke 10.2 Jesus said to them: “The harvest is plentiful, but the laborers are few; therefore beseech the Lord of the harvest to send out laborers into His harvest.”
2. Please continue to pray for a revival among the Christians students, faculty, and staff.
3. Pray that the revival will turn into an awakening among the non-Christian student, faculty, and staff.
4. Please pray for the students who may be living on campus. Pray for sexual purity in the dorms and on campus.
5. Please remember to pray for any international students who may be on campus. We are praying that they would be exposed to the gospel and receive Jesus as their savior. Pray for those who make a commitment to Christ, that when they return home, they would stand strong as a witness for Christ.



St Paul's School of Nursing Staten Island Staten Island, NY

President..... David Smith
Type..... 2-year, Private For-Profit
Campus Housing No
Student Population 746
Student-to-Faculty Ratio 17 to 1



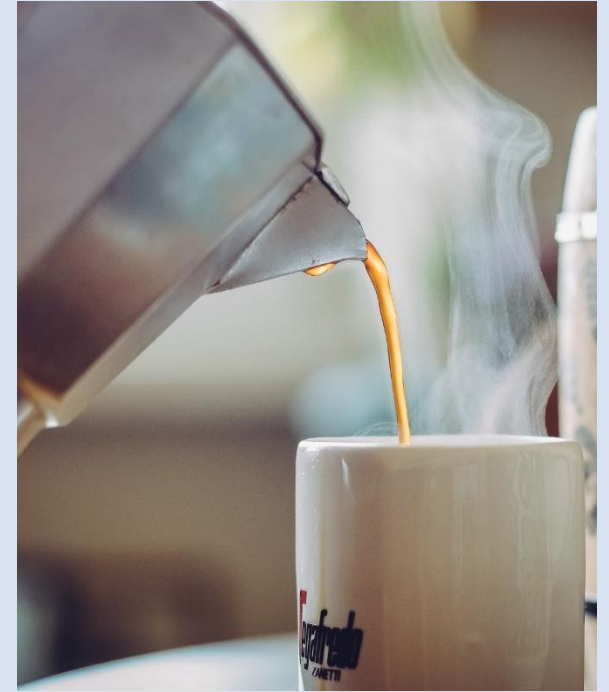
This Campus Has NOT Been Adopted

Known Christian Groups on Campus:

No Known Gospel Witness

Mission Statement

“The mission of the nursing and allied health programs at Saint Paul’s School of Nursing is to serve the needs of the community by offering an excellent education exemplifying the highest standards for nursing practice. Nursing is both an art and a science providing a human service. The core values of respect, integrity, compassion and excellence are embedded throughout the curriculum as the foundation for providing care to all. This mission guides the planning, implementation, and evaluation of the curriculum and the related services provided by the School.”



DAY
16

Prayer Request:

1. Luke 10.2 Jesus said to them: “The harvest is plentiful, but the laborers are few; therefore beseech the Lord of the harvest to send out laborers into His harvest.”
2. Please continue to pray for a revival among the Christians students, faculty, and staff.
3. Pray that the revival will turn into an awakening among the non-Christian student, faculty, and staff.
4. Please pray for the students who may be living on campus. Pray for sexual purity in the dorms and on campus.
5. Please remember to pray for any international students who may be on campus. We are praying that they would be exposed to the gospel and receive Jesus as their savior. Pray for those who make a commitment to Christ, that when they return home, they would stand strong as a witness for Christ.



St. John's University-New York Queens, NY



President..... Fr. Brian J. Shanley
 Type..... 4-year, Private Non-Profit
 Campus Housing Yes
 Student Population 20,143
 Student-to-Faculty Ratio 16 to 1

International Students (2019)..... 1,144 from at least 47 Countries

Australia, Bahamas, Brazil, Canada, China, Colombia, Ecuador, Egypt, France, Germany, Ghana, Greece, Hong Kong, India, Indonesia, Iran, Israel, Italy, Jamaica, Japan, Jordan, Kenya, Malaysia, Mexico, Mongolia, Nepal, Netherlands, Nigeria, Norway, Pakistan, Peru, Philippines, Russia, Saudi Arabia, Singapore, South Korea, Spain, Sri Lanka, Sweden, Taiwan, Thailand, Turkey, Ukraine, United Kingdom, Venezuela, Vietnam.

***Additional Campus**

Staten Island
 Manhattan
 Hauppauge
 Rome
 Paris
 Limerick



Prayer Request:

1. Luke 10.2 Jesus said to them: "The harvest is plentiful, but the laborers are few; therefore beseech the Lord of the harvest to send out laborers into His harvest."
2. Please continue to pray for a revival among the Christians students, faculty, and staff.
3. Pray that the revival will turn into an awakening among the non-Christian student, faculty, and staff.
4. Please pray for the students who may be living on campus. Pray for sexual purity in the dorms and on campus.
5. Please remember to pray for any international students who may be on campus. We are praying that they would be exposed to the gospel and receive Jesus as their savior. Pray for those who make a commitment to Christ, that when they return home, they would stand strong as a witness for Christ.

This Campus Has NOT Been Adopted

DAY
17

Known Christian Groups on Campus:

Campus Ministry Queens Campus

Associate Vice Pres. for U. Ministry
 Tori Santangelo
 Director of Liturgy and Faith Formation
 Dennis Gallagher
 Director of Vincentian Service, Leadership and Social Justice
 Angela Seegel
 Director of Residence Ministry James R. Walters
 Residence Campus Minister..... Rachel Burgos
 Campus Minister for Faith formation and Leadership
 Sis. Pat Evanick
 Campus Minister for Music and faith Formation
 Michael Fontana
 University Chaplain Rev. John Holliday
 Residence Campus Minister..... Victoria O'Keefe
 Campus Minister for Liturgy and Faith Formation
 Andrea Pinnavaia
 Campus Minister for Athletics Rev. Rickard Rock
 Campus Minister for Faith Formation and Leadership
 Br. Mike Sheerin

Student Clubs - Queens

Catholic Student Community ?
 Grace Fellowship ?
 InterVarsity Christian Fellowship ?
 Korea Campus Crusade for Christ..... ?

Campus Ministry Staten Island Campus

Director of Campus Ministry Stephen DeBlasio
 Campus Minister Rev. Tri Duong
 Music Minister Theresa Volastro



Mission Statement

"As a university, we commit ourselves to academic excellence and the pursuit of wisdom, which flows from free inquiry, religious values, and human experience. We strive to preserve and enhance an atmosphere in which scholarly research, imaginative methodology, global awareness, and an enthusiastic quest for truth serve as the basis of a vital teaching-learning process and the development of lifelong learning..."

St. Joseph's College of Nursing Syracuse, NY

Dean Lenore L. Boris
Type..... 2-year, Private Non-Profit
Campus Housing Yes
Student Population 383
Student-to-Faculty Ratio 13 to 1



Prayer Request:

1. Luke 10.2 Jesus said to them: “The harvest is plentiful, but the laborers are few; therefore beseech the Lord of the harvest to send out laborers into His harvest.”
2. Please continue to pray for a revival among the Christians students, faculty, and staff.
3. Pray that the revival will turn into an awakening among the non-Christian student, faculty, and staff.
4. Please pray for the students who may be living on campus. Pray for sexual purity in the dorms and on campus.
5. Please remember to pray for any international students who may be on campus. We are praying that they would be exposed to the gospel and receive Jesus as their savior. Pray for those who make a commitment to Christ, that when they return home, they would stand strong as a witness for Christ.



This Campus Has NOT Been Adopted

Known Christian Groups on Campus:

“Informal group discussions and prayer services are often organized according to the desires of the students.” ([Web](#))



Mission Statement

“The College of Nursing educates and inspires students to become compassionate healers who demonstrate integrity, innovation, caring and excellence.”



DAY
18

St. Joseph's College-New York Brooklyn, NY

PresidentDonald R. Boomgaarden
Type4-year, Private Non-Profit
Campus Housing.....No
Student Population.....5,012
Student-to-Faculty Ratio.....12 to 1

*Additional Campus

Patchogue, Long Island, NY



Prayer Request:

1. Luke 10.2 Jesus said to them: "The harvest is plentiful, but the laborers are few; therefore beseech the Lord of the harvest to send out laborers into His harvest."
2. Please continue to pray for a revival among the Christians students, faculty, and staff.
3. Pray that the revival will turn into an awakening among the non-Christian student, faculty, and staff.
4. Please pray for the students who may be living on campus. Pray for sexual purity in the dorms and on campus.
5. Please remember to pray for any international students who may be on campus. We are praying that they would be exposed to the gospel and receive Jesus as their savior. Pray for those who make a commitment to Christ, that when they return home, they would stand strong as a witness for Christ.



This Campus Has NOT Been Adopted

Known Christian Groups on Campus:

Brooklyn Campus

Campus Ministry and OutreachS. Susan Wilcox

Director of Campus MinistryS. Marie Mackey

Long Island Campus

Brothers and Sister in Christ ?

Director of Campus Ministry Cristian Murphy



Mission Statement

"Founded in 1916 by the Sisters of St. Joseph, the mission of St. Joseph's College is to provide a strong academic and value-oriented education at the undergraduate and graduate levels, rooted in a liberal arts tradition that supports provision for career preparation and enhancement."



St. Peter's Hospital College of Nursing Albany, NY

President and CEO James K. Reed
Type..... 2-year, Private Non-Profit
Campus Housing No
Student Population 135
Student-to-Faculty Ratio 6 to 1



Prayer Request:

1. Luke 10.2 Jesus said to them: "The harvest is plentiful, but the laborers are few; therefore beseech the Lord of the harvest to send out laborers into His harvest."
2. Please continue to pray for a revival among the Christians students, faculty, and staff.
3. Pray that the revival will turn into an awakening among the non-Christian student, faculty, and staff.
4. Please pray for the students who may be living on campus. Pray for sexual purity in the dorms and on campus.
5. Please remember to pray for any international students who may be on campus. We are praying that they would be exposed to the gospel and receive Jesus as their savior. Pray for those who make a commitment to Christ, that when they return home, they would stand strong as a witness for Christ.



This Campus Has NOT Been Adopted

Known Christian Groups on Campus:

No Known Gospel Witness

DAY
20



Mission Statement

"The mission of St. Peter's Hospital College of Nursing is to prepare students for entry into the profession of nursing as competent, caring professionals."



St. Thomas Aquinas College

Sparkill, NY



This Campus Has NOT Been Adopted

Known Christian Groups on Campus:

Director of Campus MinistryDaniel Cummings
Ambassadors for Christ..... ?

DAY
21

President Ken Daly
Type..... 4-year, Private Non-Profit
Campus Housing Yes
Student Population 1,779
Student-to-Faculty Ratio 17 to 1

International Students (2019) 57 from at least 16 Countries

Australia, Bahamas, Brazil, Canada, Colombia, Ecuador,
Germany, Italy, Jamaica, Nepal, Philippines, South Korea, Spain,
Sweden, United Kingdom, Vietnam.



Mission Statement

“St. Thomas Aquinas College seeks to challenge, guide, and energize each student to realize and create their own path to success and commit themselves to making a profound difference in the world.”



Prayer Request:

1. Luke 10.2 Jesus said to them: “The harvest is plentiful, but the laborers are few; therefore beseech the Lord of the harvest to send out laborers into His harvest.”
2. Please continue to pray for a revival among the Christians students, faculty, and staff.
3. Pray that the revival will turn into an awakening among the non-Christian student, faculty, and staff.
4. Please pray for the students who may be living on campus. Pray for sexual purity in the dorms and on campus.
5. Please remember to pray for any international students who may be on campus. We are praying that they would be exposed to the gospel and receive Jesus as their savior. Pray for those who make a commitment to Christ, that when they return home, they would stand strong as a witness for Christ.

State University of New York at New Paltz New Paltz, NY



This Campus Has NOT Been Adopted

DAY
22

Known Christian Groups on Campus:

All 4 Jesus Campus FellowshipFaith de Coteau
Catholic Campus MinistryAndrew Powers
Chinese Christian FellowshipKevin Lin
Episcopal Campus MinistryAllison Moore
ReJOYce in Jesus Campus Fellowship ...Aaron Hines

PresidentDonald P. Christian
Type4-year, Public
Campus Housing.....Yes
Student Population.....7,439
Student-to-Faculty Ratio.....15 to 1
International Students (2019)196 from at least 26 Countries
China, Egypt, India, Japan, Kuwait, Nepal, Pakistan, Saudi Arabia,
South Korea, Taiwan, Thailand, Turkey, Vietnam.



Mission Statement

“In the proud tradition of SUNY, the State University of New York at New Paltz is committed to providing high quality, affordable education to students from all social and economic backgrounds. We are a faculty and campus community dedicated to the construction of a vibrant intellectual/creative public forum which reflects and celebrates the diversity of our society and encourages and supports active participation in scholarly and artistic activity...”



Prayer Request:

1. Luke 10.2 Jesus said to them: “The harvest is plentiful, but the laborers are few; therefore beseech the Lord of the harvest to send out laborers into His harvest.”
2. Please continue to pray for a revival among the Christians students, faculty, and staff.
3. Pray that the revival will turn into an awakening among the non-Christian student, faculty, and staff.
4. Please pray for the students who may be living on campus. Pray for sexual purity in the dorms and on campus.
5. Please remember to pray for any international students who may be on campus. We are praying that they would be exposed to the gospel and receive Jesus as their savior. Pray for those who make a commitment to Christ, that when they return home, they would stand strong as a witness for Christ.



Suffolk County Community College

Selden, NY

President..... Edward T. Bonahue
Type..... 2-year, Public
Campus Housing No
Student Population 22,570
Student-to-Faculty Ratio 26 to 1
“There are approximately 80 international students at Suffolk County Community College; they make up 0.3% of all total students.”

*Additional Campuses

Brentwood, Long Island, New York
Riverhead, Long Island, New York



Prayer Request:

1. Luke 10.2 Jesus said to them: “The harvest is plentiful, but the laborers are few; therefore beseech the Lord of the harvest to send out laborers into His harvest.”
2. Please continue to pray for a revival among the Christians students, faculty, and staff.
3. Pray that the revival will turn into an awakening among the non-Christian student, faculty, and staff.
4. Please pray for the students who may be living on campus. Pray for sexual purity in the dorms and on campus.
5. Please remember to pray for any international students who may be on campus. We are praying that they would be exposed to the gospel and receive Jesus as their savior. Pray for those who make a commitment to Christ, that when they return home, they would stand strong as a witness for Christ.



This Campus Has NOT Been Adopted

Known Christian Groups on Campus:

Brentwood Campus

Catholic Club ?

Christian Faith Fellowship ?

Selden Campus

Suffolk Christian Fellowship ?

DAY
23



Mission Statement

“Suffolk County Community College promotes intellectual discovery, physical development, social and ethical awareness, and economic opportunities for all through an education that transforms lives, builds communities, and improves society.”



Sullivan County Community College

Loch Sheldrake, NY

President Jay Quaintance
Type 2-year, Public
Campus Housing Yes
Student Population 1,701
Student-to-Faculty Ratio 19 to 1
“There are approximately 17 international students at Sullivan County Community College; they make up 1.1% of all total students.”



Prayer Request:

1. Luke 10.2 Jesus said to them: “The harvest is plentiful, but the laborers are few; therefore beseech the Lord of the harvest to send out laborers into His harvest.”
2. Please continue to pray for a revival among the Christians students, faculty, and staff.
3. Pray that the revival will turn into an awakening among the non-Christian student, faculty, and staff.
4. Please pray for the students who may be living on campus. Pray for sexual purity in the dorms and on campus.
5. Please remember to pray for any international students who may be on campus. We are praying that they would be exposed to the gospel and receive Jesus as their savior. Pray for those who make a commitment to Christ, that when they return home, they would stand strong as a witness for Christ.



This Campus Has NOT Been Adopted
Known Christian Groups on Campus:
No Known Gospel Witness

DAY
24



Mission Statement

“SUNY Sullivan is the leader of innovative higher education and a catalyst for workforce development throughout the Sullivan Catskills and beyond. Our diverse community cultivates personal growth and professional advancement, preparing students for success in a sustainable and interconnected world.”



SUNY Adirondack Queensbury, NY



This Campus Has NOT Been Adopted

Known Christian Groups on Campus:

Chi Alpha Bible Study..... Norbert Rawert

DAY
25

President.....Kristine D. Duffy
Type2-year, Public
Campus Housing.....Yes
Student Population.....2,994
Student-to-Faculty Ratio.....15 to 1
“There are approximately 12 [international](#) students at Adirondack Community College; they make up 0.3% of all total students.”



Mission Statement
“SUNY Adirondack enriches and transforms lives and communities through accessible, lifelong educational opportunities.”

Vision Statement
“Through our commitment to innovation, excellence and inclusion, we will be the educational provider of choice and pathway to success for all.”

Prayer Request:

1. Luke 10.2 Jesus said to them: “The harvest is plentiful, but the laborers are few; therefore beseech the Lord of the harvest to send out laborers into His harvest.”
2. Please continue to pray for a revival among the Christians students, faculty, and staff.
3. Pray that the revival will turn into an awakening among the non-Christian student, faculty, and staff.
4. Please pray for the students who may be living on campus. Pray for sexual purity in the dorms and on campus.
5. Please remember to pray for any international students who may be on campus. We are praying that they would be exposed to the gospel and receive Jesus as their savior. Pray for those who make a commitment to Christ, that when they return home, they would stand strong as a witness for Christ.



SUNY at Albany

Albany, NY



President Havidán Rodriguez
 Type 4-year, Public
 Campus Housing Yes
 Student Population 17,688
 Student-to-Faculty Ratio 19 to 1
International Students (2019) 1,534 from at least 47 Countries
 Australia, Bangladesh, Brazil, Canada, China, Colombia, Ecuador,
 Egypt, France, Germany, Ghana, Greece, Hong Kong, India, Indonesia,
 Iran, Israel, Italy, Jamaica, Japan, Jordan, Kenya, Malaysia, Mexico,
 Mongolia, Nepal, Netherlands, Nigeria, Oman, Pakistan, Peru,
 Philippines, Russia, Saudi Arabia, Singapore, South Korea, Spain, Sri
 Lanka, Sweden, Taiwan, Thailand, Turkey, Ukraine, United Arab
 Emirates, United Kingdom, Venezuela, Vietnam.



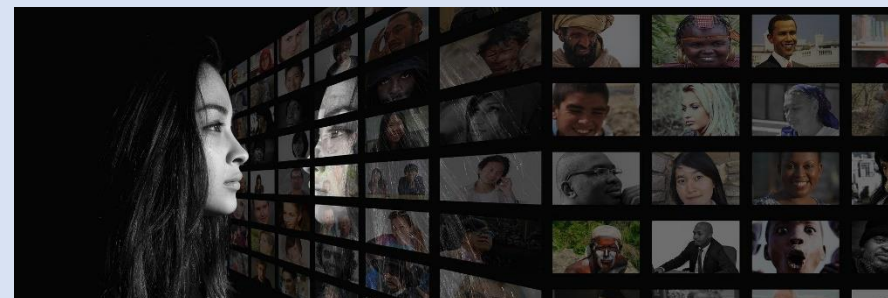
Prayer Request:

1. Luke 10.2 Jesus said to them: “The harvest is plentiful, but the laborers are few; therefore beseech the Lord of the harvest to send out laborers into His harvest.”
2. Please continue to pray for a revival among the Christians students, faculty, and staff.
3. Pray that the revival will turn into an awakening among the non-Christian student, faculty, and staff.
4. Please pray for the students who may be living on campus. Pray for sexual purity in the dorms and on campus.
5. Please remember to pray for any international students who may be on campus. We are praying that they would be exposed to the gospel and receive Jesus as their savior. Pray for those who make a commitment to Christ, that when they return home, they would stand strong as a witness for Christ.

This Campus Has NOT Been Adopted

Known Christian Groups on Campus:

Catholic Newman Association Julie Jasewicz
 Protestant Cornerstone Ministry Luke Morello
 Campus Ambassadors ?
 Cru UAlbany Anthony Roldan
 First Love Church Akos Gyau-Boateng
 Impact Christian Fellowship ?
 Indian Christian Fellowship ?
 Korean Christian Fellowship Tommy Park
 New Life Semhare Louis-Andrew
 PENZA UAlbany Campus Ministry Wunmi Surakat



Mission Statement

“The University at Albany is an engine of opportunity. Fueled by our unique mix of academic excellence, internationally recognized research, and world-class faculty, we relentlessly pursue possibilities, create connections, and open opportunities—locally and globally—with a single-minded purpose: To empower our students, faculty, and campus communities to author their own success. This is the University at Albany.”



SUNY at Fredonia

Fredonia, NY



This Campus Has NOT Been Adopted

Known Christian Groups on Campus:

Catholic Student Fellowship Sam Valentin
InterVarsity Christian Fellowship Kristina Ebert

DAY
27

President Stephen H. Kolison, Jr.
Type 4-year, Public
Campus Housing Yes
Student Population 4,055
Student-to-Faculty Ratio 14 to 1
“There are approximately 123 international students at SUNY Fredonia; they make up 2.6% of all total students.”



Mission Statement

“Fredonia educates, challenges, and inspires students to become skilled, connected, creative, and responsible global citizens and professionals. The university enriches the world through scholarship, artistic expression, community engagement, and entrepreneurship.”

Prayer Request:

1. Luke 10.2 Jesus said to them: “The harvest is plentiful, but the laborers are few; therefore beseech the Lord of the harvest to send out laborers into His harvest.”
2. Please continue to pray for a revival among the Christians students, faculty, and staff.
3. Pray that the revival will turn into an awakening among the non-Christian student, faculty, and staff.
4. Please pray for the students who may be living on campus. Pray for sexual purity in the dorms and on campus.
5. Please remember to pray for any international students who may be on campus. We are praying that they would be exposed to the gospel and receive Jesus as their savior. Pray for those who make a commitment to Christ, that when they return home, they would stand strong as a witness for Christ.



SUNY at Purchase College

Purchase, NY

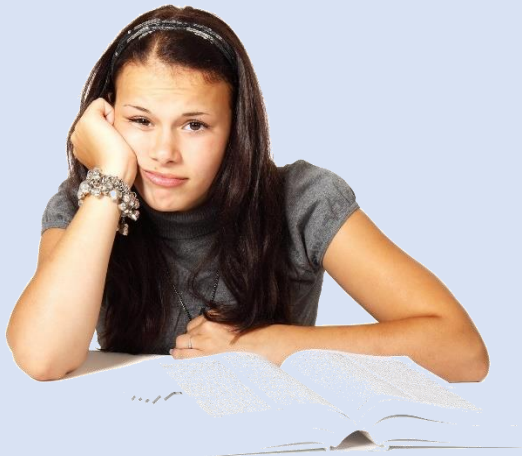


This Campus Has NOT Been Adopted

Known Christian Groups on Campus:
Purchase Christian Fellowship

DAY
28

President.....Milagros “Milly” Peña
Type4-year, Public
Campus Housing.....Yes
Student Population3,685
Student-to-Faculty Ratio.....12 to 1
International Students (2019).....101 from at least 29 Countries
Australia, Brazil, Canada, China, Colombia, France, Greece, India,
Italy, Japan, Mexico, Netherlands, Russia, Singapore, South Korea,
Spain, Sweden, Taiwan, Thailand, United Kingdom, Venezuela.



Prayer Request:

1. Luke 10.2 Jesus said to them: “The harvest is plentiful, but the laborers are few; therefore beseech the Lord of the harvest to send out laborers into His harvest.”
2. Please continue to pray for a revival among the Christians students, faculty, and staff.
3. Pray that the revival will turn into an awakening among the non-Christian student, faculty, and staff.
4. Please pray for the students who may be living on campus. Pray for sexual purity in the dorms and on campus.
5. Please remember to pray for any international students who may be on campus. We are praying that they would be exposed to the gospel and receive Jesus as their savior. Pray for those who make a commitment to Christ, that when they return home, they would stand strong as a witness for Christ.



Mission Statement

“Purchase College, SUNY embraces its public mission by bringing together students in the liberal arts, sciences, and conservatory arts programs in a vibrant, creative community where in-depth knowledge grows from open-minded engagement, questioning boundaries, and inspiring possibility.”



SUNY Brockport

Brockport, NY



This Campus Has NOT Been Adopted

Known Christian Groups on Campus:

Campus One80 Sonya Garcia

DAY
29

President Heidi Macpherson
Type 4-year, Public
Campus Housing Yes
Student Population 7,592
Student-to-Faculty Ratio 16 to 1
“There are approximately 79 international students at SUNY Brockport; they make up 1.0% of all total students.”



Mission Statement

“The State University of New York College at Brockport:

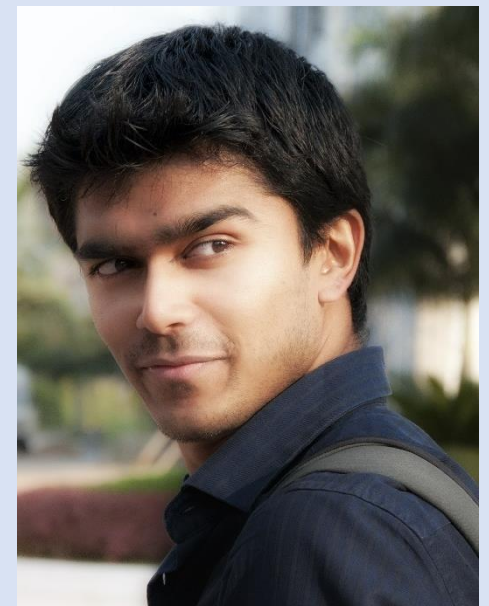
Is committed to providing a liberal arts and professional education - at both the undergraduate and graduate level - for those who have the necessary ability and motivation to benefit from high quality public higher education;

Has the success of its students as its highest priority, emphasizing student learning, and encompassing admission to graduate and professional schools, employment, and civic engagement in a culturally diverse society and in globally interdependent communities; and

Is committed to advancing teaching, scholarship, creative endeavors, and service to the College community and the greater society by supporting the activities of an outstanding faculty and staff.”

Prayer Request:

1. Luke 10.2 Jesus said to them: “The harvest is plentiful, but the laborers are few; therefore beseech the Lord of the harvest to send out laborers into His harvest.”
2. Please continue to pray for a revival among the Christians students, faculty, and staff.
3. Pray that the revival will turn into an awakening among the non-Christian student, faculty, and staff.
4. Please pray for the students who may be living on campus. Pray for sexual purity in the dorms and on campus.
5. Please remember to pray for any international students who may be on campus. We are praying that they would be exposed to the gospel and receive Jesus as their savior. Pray for those who make a commitment to Christ, that when they return home, they would stand strong as a witness for Christ.



SUNY Broome Community College

Binghamton, NY

President Kevin Drumm
Type 2-year, Public
Campus Housing Yes
Student Population 5,386
Student-to-Faculty Ratio 18 to 1
“There are approximately 74 international students at SUNY Broome; they make up 1.1% of all total students.”



Prayer Request:

1. Luke 10.2 Jesus said to them: “The harvest is plentiful, but the laborers are few; therefore beseech the Lord of the harvest to send out laborers into His harvest.”
2. Please continue to pray for a revival among the Christians students, faculty, and staff.
3. Pray that the revival will turn into an awakening among the non-Christian student, faculty, and staff.
4. Please pray for the students who may be living on campus. Pray for sexual purity in the dorms and on campus.
5. Please remember to pray for any international students who may be on campus. We are praying that they would be exposed to the gospel and receive Jesus as their savior. Pray for those who make a commitment to Christ, that when they return home, they would stand strong as a witness for Christ.



This Campus Has NOT Been Adopted

Known Christian Groups on Campus:

Brothers and Sisters in Christ Sara Rose
Campus Bible Fellowship Thomas Jahn



Mission Statement

“SUNY Broome Community College supports all members of the learning community by creating access to inclusive, diverse educational experiences. Success is achieved through the provision of innovative academics, transformative student support, and meaningful civic & community engagement. We realize our mission by fostering an environment that exemplifies the college’s institutional goals to the highest quality.”



SUNY College at Geneseo

Geneseo, NY

PresidentDenise A. Battles
Type4-year, Public
Campus Housing.....Yes
Student Population.....4,911
Student-to-Faculty Ratio.....17 to 1
International Students (2019)100 from at least 21 Countries
Bangladesh, Canada, China, Colombia, Ecuador, Egypt, India,
Iran, Japan, Malaysia, Netherlands, Nigeria, Pakistan, Russia, Sri
Lanka, Turkey, United Kingdom, Venezuela.



Prayer Request:

1. Luke 10.2 Jesus said to them: “The harvest is plentiful, but the laborers are few; therefore beseech the Lord of the harvest to send out laborers into His harvest.”
2. Please continue to pray for a revival among the Christians students, faculty, and staff.
3. Pray that the revival will turn into an awakening among the non-Christian student, faculty, and staff.
4. Please pray for the students who may be living on campus. Pray for sexual purity in the dorms and on campus.
5. Please remember to pray for any international students who may be on campus. We are praying that they would be exposed to the gospel and receive Jesus as their savior. Pray for those who make a commitment to Christ, that when they return home, they would stand strong as a witness for Christ.



This Campus Has NOT Been Adopted

Known Christian Groups on Campus:

InterVarsity Christian Fellowship ?
Brothers and Sisters in Christ..... ?
Wesley Foundation at Geneseo..... ?



Mission Statement

“We are a distinctive public liberal arts college that welcomes and inspires students to develop their knowledge and skills to build a better world. Our supportive, inclusive community is exceptional in cultivating creativity, engagement, and discovery. We find strength in diversity, joy in growth, and fulfillment in lifelong learning.”



DAY
31