

New York Ministry Network

31 Day Prayer Guide



Volume V

Dear Friends,

Thank You for your participation in this vital ministry. We believe that prayer still changes “things”. God answers prayer! Our colleges and universities need prayer now more than ever. That is why we have been putting these prayer guides before you. This is now the fifth in the New York series. Our simple goal is to do what Jesus asked us to do, pray for laborers: Luke 10.2 *“The harvest is plentiful, but the laborers are few; therefore, plead with the Lord of the harvest to send out laborers into His harvest”* (NASB). We, at Chi Alpha, are asking you to “*plead*” with the Lord of the harvest for laborers. We believe that God wants to send a revival to the campuses of America and we need the workers to be in place! We need your help.

The good news is, that we have seen great results. In the past ten years we have seen an increase (169%) in Chi Alpha workers. That is awesome! But we have much ground to cover. According to the everycampus.com website more than 2,000 campuses in the USA still have no known Gospel Witness.

In this guide, like the last, we have tried to find all the Christian organizations on each campus. (It is likely that we missed a few.) Please pray for the student leaders of the Christian groups listed. They are the “soldiers on the front lines”. Some of them may not even know that they are in spiritual warfare. Pray that the Holy Spirit awakens them to that fact. (Some student groups show a question mark instead of a student leader. This happens only when a student leader or advisor could not be located.)

You will notice that several schools have chaplains and ministry staff. We never know where they stand on Christ, Sin, Biblical Authority, etc. Pray that God works in them and through them nevertheless.

We also found the names of some of the student group advisors. These are faculty or staff who are Christians, or at least sympathetic to Christianity, and act in as advocates and liaison to the administration. They too are soldiers on the front line.

An advantage of praying for the advisor is that they are more “stable”. Normally student leaders are voted on every year, whereas advisors, like the chaplains, stay in their position for years at a time. Creating a continuity of ministry.

On another note, this prayer guide was compiled with data from the list found at “The National Center for Education Statistics” ([NCES](http://nces.ed.gov)) and from each school’s own website. For the international student statistics, we used a website called “[College Factual](http://CollegeFactual.com)”. The international statistics are under the “Student Life” tab.

Thank You again for investing time into this next generation. Only eternity will tell what we helped along and what we were able to hinder.

Be Blessed,
Joe and Heidi Barrale
[Assemblies of God U.S. Missionaries](http://AssembliesofGodU.S.Missionaries.org)
[Chi Alpha](http://ChiAlpha.org) / Adopt-A-Campus.org
[Blog at Adopt-A-Campus](http://BlogatAdopt-A-Campus.org)

A List of Schools Included in this Prayer Guide

Day 1 New York Conservatory for Dramatic Arts

Day 2 New York Institute of Technology

Day 3 New York Law School

Day 4 New York Medical College

Day 5 New York School for Medical

and Dental Assistants

Day 6 New York School of Interior Design

Day 7 New York Theological Seminary

Day 8 New York University

Day 9 Niagara County Community College

Day 10 Niagara University

Day 11 North Country Community College

Day 12 Nyack College

Day 13 Ohel Margulia Seminary

Day 14 Onondaga Community College

Day 15 Orange County Community College

Day 16 Pace University

Day 17 Pacific College of Oriental Medicine-New York

Day 18 Paul Smiths College of Arts and Science

Day 19 Phillips School of Nursing at Mount Sinai Beth Israel

Day 20 Plaza College

Day 21 Pomeroy College of Nursing at Crouse Hospital

Day 22 Pratt Institute-Main

Day 23 Rabbinical Academy Mesivta Rabbi Chaim Berlin

Day 24 Rabbinical College Bobover Yeshiva Bnei Zion

Day 25 Rabbinical College of Ohr Shimon Yisroel

Day 26 Rabbinical Seminary of America

Day 27 Relay Graduate School of Education

Day 28 Rensselaer Polytechnic Institute

Day 29 Roberts Wesleyan College

Day 30 Rochester Institute of Technology

Day 31 Rockefeller University

New York Conservatory for Dramatic Arts New York, NY



This Campus Has NOT Been Adopted

Known Christian Groups on Campus:

No Known Gospel Witness

DAY

1

President Richard Omar
Type 2-year, Private For-Profit
Campus Housing No
Student Population 257
Student-to-Faculty Ratio 16 to 1
“There are approximately 34 international students at New York Conservatory for Dramatic Arts; they make up 13.2% of all total students.”



About the New York Conservatory

“We know that deciding how and where to pursue your professional acting career is one of life’s biggest decisions. The New York Conservatory offers small class size and a collaborative learning experience to transform you from a student into an actor who works. We believe the sooner you can start your career, the better.

In the conservatory environment, you will work all day, every day strictly on your craft. Our highly disciplined training programs give you the tools for a successful career as an actor in film, television and musical theater”

Prayer Request:

1. Luke 10.2 Jesus said to them: “The harvest is plentiful, but the laborers are few; therefore beseech the Lord of the harvest to send out laborers into His harvest.”
2. Please continue to pray for a revival among the Christians students, faculty, and staff.
3. Pray that the revival will turn into an awakening among the non-Christian student, faculty, and staff.
4. Please pray for the students who may be living on campus. Pray for sexual purity in the dorms and on campus.
5. Please remember to pray for any international students who may be on campus. We are praying that they would be exposed to the gospel and receive Jesus as their savior. Pray for those who make a commitment to Christ, that when they return home, they would stand strong as a witness for Christ.



New York Institute of Technology Old Westbury, NY



This Campus Has NOT Been Adopted

Known Christian Groups on Campus:
Christian Medical and Dental Association...?

DAY
2

President Henry C. “Hank” Foley
Type 4-year, Private Non-Profit
Campus Housing Yes
Student Population 6,851
Student-to-Faculty Ratio 11 to 1

International Students (2019) 1,422 from at least 47 Countries

Bangladesh, Brazil, Canada, China, Colombia, Egypt, France, Germany, Ghana, Greece, Hong Kong, India, Indonesia, Iran, Italy, Jamaica, Jordan, Kenya, Malaysia, Mexico, Nepal, Norway, Pakistan, Saudi Arabia, Singapore, South Korea, Spain, Sri Lanka, Sweden, Taiwan, Thailand, Turkey, United Arab Emirates, United Kingdom, Vietnam.

***Other Locations**

New York, NY
Jonesboro, AR
Vancouver, Canada
China



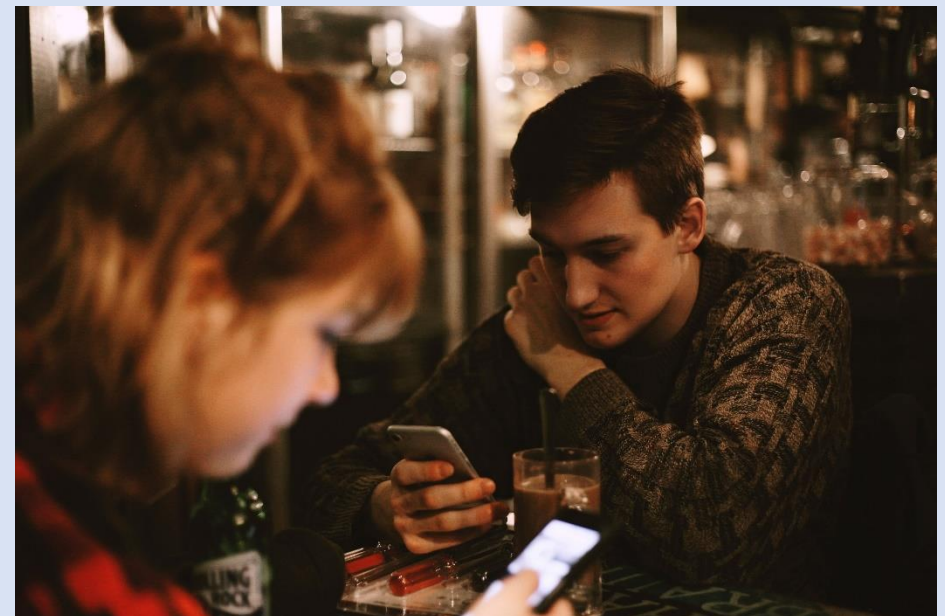
Mission Statement

“Since 1955, New York Tech has pursued its mission to:

- Provide career-oriented professional education
- Give all qualified students access to opportunity
- Support research and scholarship that benefit the larger world”

Prayer Request:

1. Luke 10.2 Jesus said to them: “The harvest is plentiful, but the laborers are few; therefore beseech the Lord of the harvest to send out laborers into His harvest.”
2. Please continue to pray for a revival among the Christians students, faculty, and staff.
3. Pray that the revival will turn into an awakening among the non-Christian student, faculty, and staff.
4. Please pray for the students who may be living on campus. Pray for sexual purity in the dorms and on campus.
5. Please remember to pray for any international students who may be on campus. We are praying that they would be exposed to the gospel and receive Jesus as their savior. Pray for those who make a commitment to Christ, that when they return home, they would stand strong as a witness for Christ.



New York Law School

New York, NY



This Campus Has NOT Been Adopted

DAY
3

Known Christian Groups on Campus:

Christian Legal Society ?

President and Dean..... Anthony W. Crowell
Type..... 4-year, Private Non-Profit
Campus Housing Yes
Student Population 1,076
Student-to-Faculty Ratio Not Available
“There are approximately 26 [international](#) students at New York Law School; they make up 2.5% of all total students.”

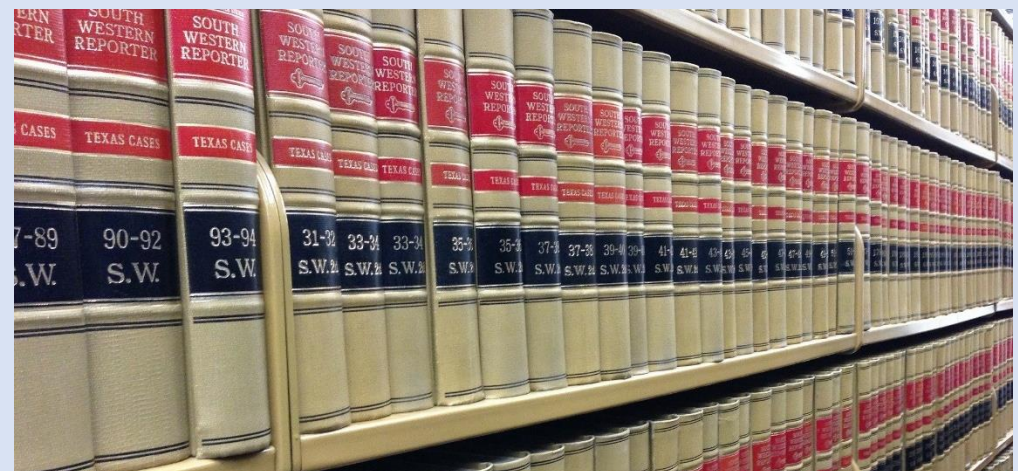


Mission Statement

“To provide an extraordinary and innovative educational experience that embodies the fundamental values of the legal system and creates a bridge from scholarship and service to leadership and practice;
To offer a vibrant, diverse, and forward-thinking center of legal studies where students develop the knowledge, skills, and professional values to serve their clients and have successful careers advancing justice, building the economy, and serving the various needs of modern society; and,
To serve as an incubator of ideas and actions to be emulated throughout New York City, the nation, and the world.”

Prayer Request:

1. Luke 10.2 Jesus said to them: “The harvest is plentiful, but the laborers are few; therefore beseech the Lord of the harvest to send out laborers into His harvest.”
2. Please continue to pray for a revival among the Christians students, faculty, and staff.
3. Pray that the revival will turn into an awakening among the non-Christian student, faculty, and staff.
4. Please pray for the students who may be living on campus. Pray for sexual purity in the dorms and on campus.
5. Please remember to pray for any international students who may be on campus. We are praying that they would be exposed to the gospel and receive Jesus as their savior. Pray for those who make a commitment to Christ, that when they return home, they would stand strong as a witness for Christ.



New York Medical College

Valhalla, NY

President..... Alan Kadish
Type 4-year, Private Non-Profit
Campus Housing..... Yes
Student Population 1,604
Student-to-Faculty Ratio..... Not Available
“There are approximately 42 international students at New York Medical College; they make up 2.9% of all total students.”



Prayer Request:

1. Luke 10.2 Jesus said to them: “The harvest is plentiful, but the laborers are few; therefore beseech the Lord of the harvest to send out laborers into His harvest.”
2. Please continue to pray for a revival among the Christians students, faculty, and staff.
3. Pray that the revival will turn into an awakening among the non-Christian student, faculty, and staff.
4. Please pray for the students who may be living on campus. Pray for sexual purity in the dorms and on campus.
5. Please remember to pray for any international students who may be on campus. We are praying that they would be exposed to the gospel and receive Jesus as their savior. Pray for those who make a commitment to Christ, that when they return home, they would stand strong as a witness for Christ.



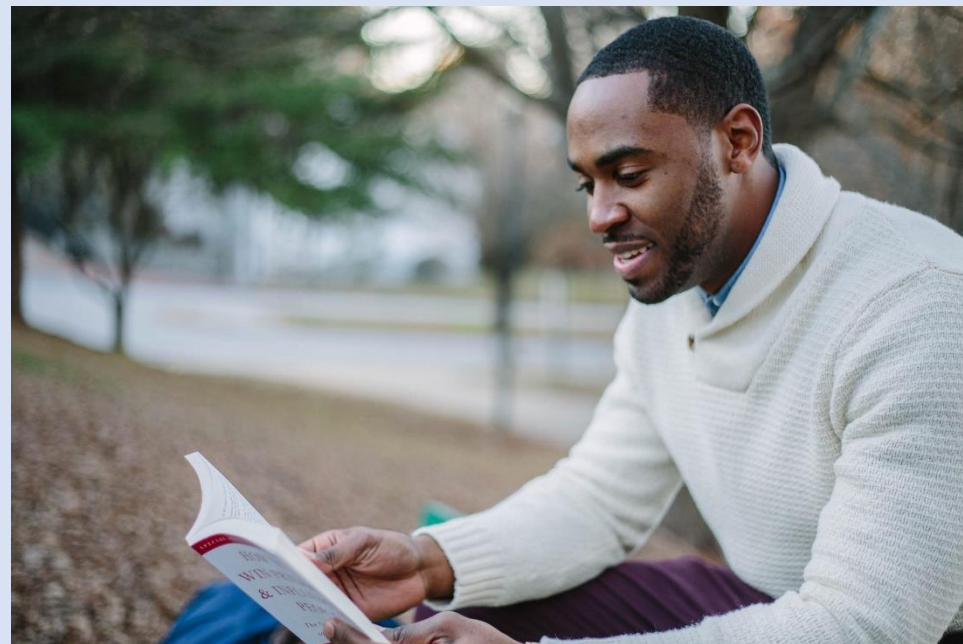
This Campus Has NOT been Adopted

Known Christian Groups on Campus:

Catholic Medical Association?
Christian Medical & Dental Association...?

Mission Statement

“New York Medical College (NYMC), a member of the Touro College and University System, is a health sciences College whose purpose is to educate clinical and public health professionals as well as researchers, to conduct biomedical and population-based research. Through its faculty and affiliated partners, the College engenders a diverse and inclusive community that promotes an atmosphere of excellence, scholarship and professionalism.”



DAY
4

New York School for Medical and Dental Assistants Long Island City, NY

PresidentUnavailable
Type2-year, Private For-Profit
Campus Housing.....No
Student Population.....381
Student-to-Faculty Ratio.....20 to 1



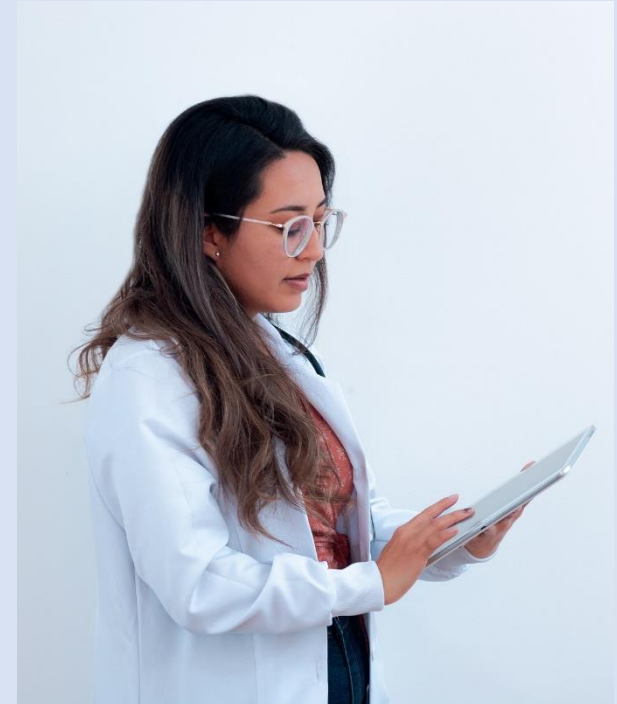
This Campus Has NOT Been Adopted

Known Christian Groups on Campus:
No Known Gospel Witness

DAY
5

Mission Statement

“The New York School for Medical and Dental Assistants is a career-oriented, co-educational institution that believes that the basic purpose of education is to prepare one for the highest degree of self-realization through quality education and training necessary to face the complexities of today's society. The ultimate goal of the institution lies in its responsibility, to both the students and the community, to provide educational opportunities through short-term programs designed to prepare a student for immediate employment in a chosen field of study upon graduation with an emphasis on serving the needs of the community.”



Prayer Request:

1. Luke 10.2 Jesus said to them: “The harvest is plentiful, but the laborers are few; therefore beseech the Lord of the harvest to send out laborers into His harvest.”
2. Please continue to pray for a revival among the Christians students, faculty, and staff.
3. Pray that the revival will turn into an awakening among the non-Christian student, faculty, and staff.
4. Please pray for the students who may be living on campus. Pray for sexual purity in the dorms and on campus.
5. Please remember to pray for any international students who may be on campus. We are praying that they would be exposed to the gospel and receive Jesus as their savior. Pray for those who make a commitment to Christ, that when they return home, they would stand strong as a witness for Christ.



New York School of Interior Design

New York, NY

President David Sprouls
Type 4-year, Private Non-Profit
Campus Housing Yes
Student Population 621
Student-to-Faculty Ratio 11 to 1
“There are approximately 137 international students at New York School of Interior Design; they make up 25.5% of all total students.”



Prayer Request:

1. Luke 10.2 Jesus said to them: “The harvest is plentiful, but the laborers are few; therefore beseech the Lord of the harvest to send out laborers into His harvest.”
2. Please continue to pray for a revival among the Christians students, faculty, and staff.
3. Pray that the revival will turn into an awakening among the non-Christian student, faculty, and staff.
4. Please pray for the students who may be living on campus. Pray for sexual purity in the dorms and on campus.
5. Please remember to pray for any international students who may be on campus. We are praying that they would be exposed to the gospel and receive Jesus as their savior. Pray for those who make a commitment to Christ, that when they return home, they would stand strong as a witness for Christ.



This Campus Has NOT Been Adopted

Known Christian Groups on Campus:

No Known Gospel Witness

DAY

6

Mission Statement

“New York School of Interior Design’s singular focus is to provide the most innovative, immersive, and transformative interior design education in the world.”

Vision Statement

“The most beautiful, inspiring, and human-centered spaces that enable all people to flourish are designed by those who have studied at the New York School of Interior Design.”



New York Theological Seminary

New York, NY



This Campus Has NOT Been Adopted

Known Christian Groups on Campus:

No Known Campus Ministry

DAY

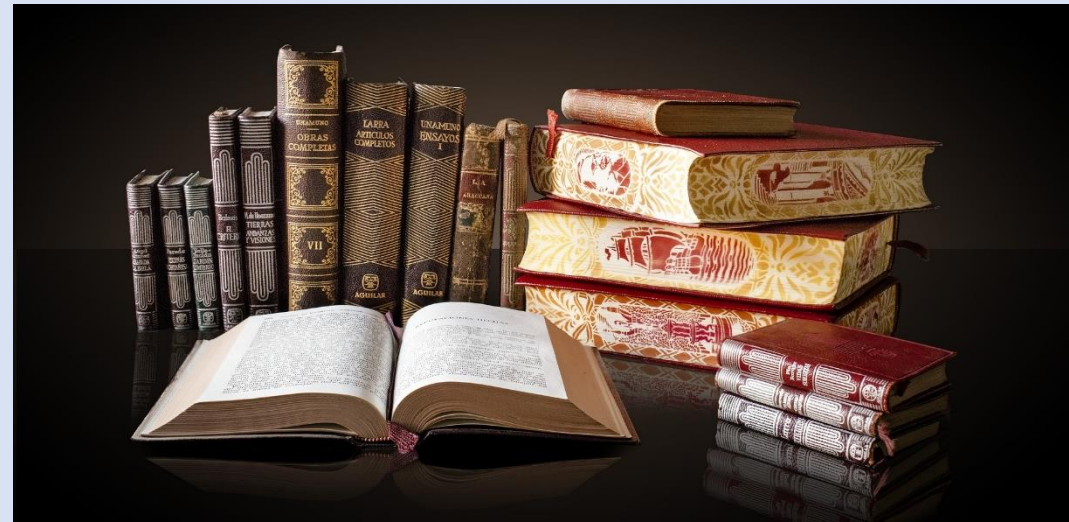
7

President.....LaKeesha Walrond
Type4-year, Private Non-Profit
Campus Housing.....No
Student Population.....272
Student-to-Faculty Ratio.....Unavailable
“There are approximately 29 [international](#) students at New York Theological Seminary; they make up 9.1% of all total students.”



Prayer Request:

1. Luke 10.2 Jesus said to them: “The harvest is plentiful, but the laborers are few; therefore beseech the Lord of the harvest to send out laborers into His harvest.”
2. Please continue to pray for a revival among the Christians students, faculty, and staff.
3. Pray that the revival will turn into an awakening among the non-Christian student, faculty, and staff.
4. Please pray for the students who may be living on campus. Pray for sexual purity in the dorms and on campus.
5. Please remember to pray for any international students who may be on campus. We are praying that they would be exposed to the gospel and receive Jesus as their savior. Pray for those who make a commitment to Christ, that when they return home, they would stand strong as a witness for Christ.



Mission Statement

“Preparing faith and thought leaders to engage relevant, restorative and revolutionary ministry.”

Vision Statement

“We are a diverse and inclusive community of learners providing resources, tools, and strategies for effective leadership, preparing humans to engage in prophetic and transformative ministry and promoting love and respect for creator and creation.”



New York University

New York, NY



President..... Andrew Hamilton
 Type 4-year, Private Non-Profit
 Campus Housing Yes
 Student Population 52,775
 Student-to-Faculty Ratio 8 to 1
International Students (2019) 14,306 from at least 50 Countries

Australia, Bahamas, Bangladesh, Brazil, Canada, China, Colombia, Ecuador, Egypt, France, Germany, Ghana, Greece, Hong Kong, India, Indonesia, Iran, Israel, Italy, Jamaica, Japan, Jordan, Kenya, Kuwait, Malaysia, Mexico, Mongolia, Nepal, Netherlands, Nigeria, Norway, Oman, Pakistan, Peru, Philippines, Russia, Saudi Arabia, Singapore, South Korea, Spain, Sri Lanka, Sweden, Taiwan, Thailand, Turkey, Ukraine, United Arab Emirates, United Kingdom, Venezuela, Vietnam.

*Additional Campuses

Abu Dhabi
 Shanghai

Mission Statement

“New York University’s mission is to be a top quality international center of scholarship, teaching and research. This involves retaining and attracting outstanding faculty who are leaders in their fields, encouraging them to create programs that draw outstanding students, and providing an intellectually rich environment. NYU seeks to take academic and cultural advantage of its location and to embrace diversity among faculty, staff and students to ensure a wide range of perspectives, including international perspectives, in the educational experience.”

Prayer Request:

1. Luke 10.2 Jesus said to them: “The harvest is plentiful, but the laborers are few; therefore beseech the Lord of the harvest to send out laborers into His harvest.”
2. Please continue to pray for a revival among the Christians students, faculty, and staff.
3. Pray that the revival will turn into an awakening among the non-Christian student, faculty, and staff.
4. Please pray for the students who may be living on campus. Pray for sexual purity in the dorms and on campus.
5. Please remember to pray for any international students who may be on campus. We are praying that they would be exposed to the gospel and receive Jesus as their savior. Pray for those who make a commitment to Christ, that when they return home, they would stand strong as a witness for Christ.

This Campus Has NOT Been Adopted

Known Christian Groups on Campus:

Catholic Advisors

..... Fr. John Baptist Hoang
 Elizabeth Hofer
 Darin Howell
 Andres Nieto
 Patricia Vega

Protestant Spiritual Life Advisors

..... William Kim (180 Church)
 Kevin Niemann (Bridges International)
 Michael Henderson (Bridges Int.)
 Jordan Merkle (Bridges International)
 Megan Sanders (Episcopalian)
 Vinny Wong (Compass Koinonia)
 Janell Yoo (Compass Koinonia)
 Chelsea Lo (Compass Koinonia)
 Mona Lee (Compass Koinonia)
 Daniel Lee (Compass Koinonia)
 Michelle Demarest (Cru)
 Brandon Brooks (Cru)
 Lydia Brooks (Cru)
 Sam Gryzwa (Cru)
 Jennifer Kim (Encounter Fellowship)
 Hanna Chung (Encounter Fellowship)
 John Yang (Encounter Fellowship)
 Selene De Los Santos (Every Nation)
 Fernando De Los Santos (Every Nation)
 Canile Jackson (Every Nation)
 Valerie Althouse (International Students)
 Kenny Chau
 Cindy Chau
 Lisa Voth
 Jason Casper
 Cristobal Tong (3Stone)
 Trevor Agatsuma (InterVarsity)
 Ariana Waters (InterVarsity)
 Chelsea Whitfield (InterVarsity)
 Sarah Lin (InterVarsity)
 Kaitlyn Yiu
 Soo Ho Park
 Shing Chung Kwong
 Megan Terrell (RUF)
 Matthew Terrell (RUF)
 Haley Williams (RUF)
 Jonathan Kim
 Caleb Muhn
 F. Romall Smalls
 Melissa Crockett (Navigators)
 Sarah Esselborn (Navigators)
 Jared Parsons (Navigators)
 Brendan Mahar (Navigators)
 Jana Parsons (Navigators)
 Emily Greaves (Navigators)
 Mishhael Ramirez (Navigators)

Student Groups

... 180 Fellowship
 ... Agape Week Planning Committee
 ... Alpha Omega — formerly New York City Church of Christ
 ... Asian American Christian Fellowship
 ... Bridges International
 ... CRU
 ... Christian Inter-Fellowship Council
 ... Christian Legal Fellowship
 ... Christians on Campus aka Zoe Christian Club
 ... City Campus Ministry-Reformed University Fellowship
 ... Compass Koinonia
 ... Every Nation Campus Ministry
 ... Encounter Christian Fellowship
 ... Graduate Christian Fellowship
 ... Health and Grad at Compass Fellowship, NYU Medical, Dental, and Graduate Schools
 ... InterVarsity
 ... International Chinese Christian Fellowship at NYU
 ... International Student, Inc.
 ... J. Reuben Clark Law Society at NYU
 ... Korean Campus Crusade for Christ
 ... Korean Christian Student Association
 ... Orthodox Christian Fellowship
 ... Reformed University Fellowship City Campus at NYU
 ... Navigators
 ... Shine
 ... Student Christian Movement
 ... The Remnant Christian Fellowship
 ... Youth Evangelical Fellowship
 ... All-University Gospel Choir

DAY
 8

Niagara County Community College

Sanborn, NY



This Campus Has NOT Been Adopted

Known Christian Groups on Campus:

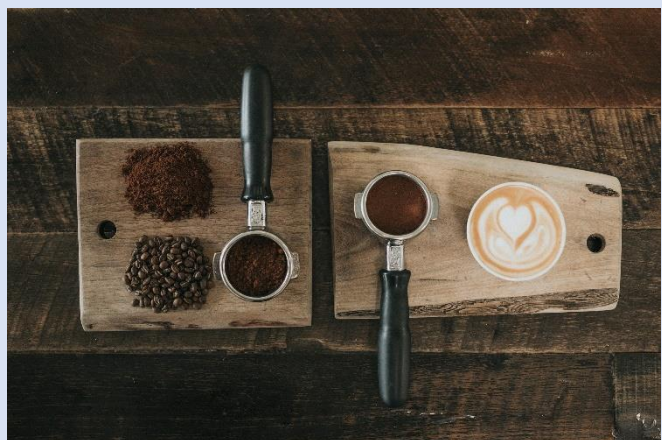
CruJennifer Schwab (Advisor)

DAY
9

President William J. Murabito
Type 2-year, Public
Campus Housing..... Yes
Student Population..... 4,389
Student-to-Faculty Ratio..... 18 to 1
“There are approximately 12 international students at Niagara County Community College; they make up 0.2% of all total students.”

***Other Location**

The Niagara Falls Culinary Institute



Mission Statement

“Niagara County Community College provides flexible teaching and learning environments dedicated to educational excellence and committed to our core values of student centeredness, accessibility, comprehensiveness, collegiality, community partnership, and lifelong learning. Through the liberal arts and sciences as a key component of all academic programs, our College nurtures and empowers students to recognize and to value our common humanity as well as the richness of our diversity. NCCC offers quality academic programs while providing supportive student and academic services. To produce engaged citizens, NCCC provides cultural, social, recreational, athletic, and global experiences. NCCC is a major contributor to economic development through transfer, career and technical education, workforce development, and continuing education. To demonstrate integrity and accountability, NCCC operates through a collegial model of shared governance, which provides for a comprehensive assessment of all aspects of institutional effectiveness.”

Prayer Request:

1. Luke 10.2 Jesus said to them: “The harvest is plentiful, but the laborers are few; therefore beseech the Lord of the harvest to send out laborers into His harvest.”
2. Please continue to pray for a revival among the Christians students, faculty, and staff.
3. Pray that the revival will turn into an awakening among the non-Christian student, faculty, and staff.
4. Please pray for the students who may be living on campus. Pray for sexual purity in the dorms and on campus.
5. Please remember to pray for any international students who may be on campus. We are praying that they would be exposed to the gospel and receive Jesus as their savior. Pray for those who make a commitment to Christ, that when they return home, they would stand strong as a witness for Christ.



Niagara University

Niagara University, NY

President Fr. James J. Maher
Type 4-year, Private Non-Profit
Campus Housing..... Yes
Student Population..... 3,544
Student-to-Faculty Ratio..... 11 to 1
International Students (2019) 656 from at least 30 Countries
Australia, Bahamas, Canada, China, Colombia, Egypt, France,
Germany, Ghana, India, Indonesia, Israel, Italy, Japan, Jordan, Mex-
ico, Netherlands, Peru, Russia, Saudi Arabia, Singapore, South Ko-
rea, Spain, Taiwan, Thailand, Turkey, Ukraine, United Kingdom,
Venezuela, Vietnam.



Prayer Request:

1. Luke 10.2 Jesus said to them: “The harvest is plentiful, but the laborers are few; therefore beseech the Lord of the harvest to send out laborers into His harvest.”
2. Please continue to pray for a revival among the Christians students, faculty, and staff.
3. Pray that the revival will turn into an awakening among the non-Christian student, faculty, and staff.
4. Please pray for the students who may be living on campus. Pray for sexual purity in the dorms and on campus.
5. Please remember to pray for any international students who may be on campus. We are praying that they would be exposed to the gospel and receive Jesus as their savior. Pray for those who make a commitment to Christ, that when they return home, they would stand strong as a witness for Christ.



This Campus Has NOT Been Adopted

Known Christian Groups on Campus:

Campus Ministry Director..... Kristina Daloia
Brothers and Sisters in Christ..... ?
SOAR 40:41 ?

DAY
10



Mission Statement

“NU educates its students and enriches their lives through programs and career preparation, informed by the Catholic and Vincentian traditions.”



North Country Community College

Saranac Lake, NY

President Joe Keegan
Type 2-year, Public
Campus Housing Yes
Student Population 1,602
Student-to-Faculty Ratio 14 to 1
“There are approximately 7 [international](#) students at North Country Community College; they make up 0.4% of all total students.”



Prayer Request:

1. Luke 10.2 Jesus said to them: “The harvest is plentiful, but the laborers are few; therefore beseech the Lord of the harvest to send out laborers into His harvest.”
2. Please continue to pray for a revival among the Christians students, faculty, and staff.
3. Pray that the revival will turn into an awakening among the non-Christian student, faculty, and staff.
4. Please pray for the students who may be living on campus. Pray for sexual purity in the dorms and on campus.
5. Please remember to pray for any international students who may be on campus. We are praying that they would be exposed to the gospel and receive Jesus as their savior. Pray for those who make a commitment to Christ, that when they return home, they would stand strong as a witness for Christ.



This Campus Has NOT Been Adopted
Known Christian Groups on Campus:
No Known Gospel Witness

DAY
11



Mission Statement

“North Country Community College provides open access to high quality academic programs that prepare students for transfer and career success. The College contributes significantly to the enrichment of our communities by cultivating an educated citizenry, a skilled workforce, and opportunities for lifelong learning.”



Nyack College

New York, NY



This Campus Has NOT Been Adopted

Known Christian Groups on Campus:

Chapel..... Charles Hammond

DAY
12

President Rajan S. Mathews
Type 4-year, Private Not-Profit
Campus Housing Yes
Student Population 2,063
Student-to-Faculty Ratio 16 to 1

International Students (2019) 154 from at least 24 Countries

Australia, Brazil, Canada, China, Colombia, Ecuador, France, Germany, Hong Kong, India, Italy, Jamaica, Kenya, Malaysia, Mexico, Netherlands, Nigeria, Pakistan, Philippines, Russia, South Korea, Spain, Taiwan, United Kingdom.



Missions Statement

“Nyack College, a Christian and Missionary Alliance educational institution, through its undergraduate, graduate and seminary programs, pursues its historic mission of preparing men and women to “take the whole Gospel to the whole world.”

Prayer Request:

1. Luke 10.2 Jesus said to them: “The harvest is plentiful, but the laborers are few; therefore beseech the Lord of the harvest to send out laborers into His harvest.”
2. Please continue to pray for a revival among the Christians students, faculty, and staff.
3. Pray that the revival will turn into an awakening among the non-Christian student, faculty, and staff.
4. Please pray for the students who may be living on campus. Pray for sexual purity in the dorms and on campus.
5. Please remember to pray for any international students who may be on campus. We are praying that they would be exposed to the gospel and receive Jesus as their savior. Pray for those who make a commitment to Christ, that when they return home, they would stand strong as a witness for Christ.



Ohel Margulia Seminary

Monsey, NY



This Campus Has NOT Been Adopted

Known Christian Groups on Campus:

No Known Gospel Witness

DAY
13

Chief Executive Officer Rabbi Meyer Rosenfeld
Type..... 2-year, Private Non-Profit
Campus Housing No
Student Population 247
Student-to-Faculty Ratio 15 to 1



Mission Statement

“The mission statement includes, as its goals: 1. To provide students with the education, skills, techniques and methods for transmitting traditional Jewish knowledge as teachers in Jewish schools. 2. To provide students with an appreciation for the Torah perspective, and an understanding of the central role of Torah in Jewish life. 3. To involve students in the creative study of classical Jewish sources. 4. To provide students with a comprehensive Torah ordered world view that will enhance their lives not only professionally but also as parents and responsible members of the greater community.”

Prayer Request:

1. Luke 10.2 Jesus said to them: “The harvest is plentiful, but the laborers are few; therefore beseech the Lord of the harvest to send out laborers into His harvest.”
2. Please continue to pray for a revival among the Christians students, faculty, and staff.
3. Pray that the revival will turn into an awakening among the non-Christian student, faculty, and staff.
4. Please pray for the students who may be living on campus. Pray for sexual purity in the dorms and on campus.
5. Please remember to pray for any international students who may be on campus. We are praying that they would be exposed to the gospel and receive Jesus as their savior. Pray for those who make a commitment to Christ, that when they return home, they would stand strong as a witness for Christ.



Onondaga Community College Syracuse, NY



This Campus Has NOT Been Adopted

Known Christian Groups on Campus:

No Known Gospel Witness

DAY
14

President..... Ms. Casey Crabill
Type 2-year, Public
Campus Housing..... Yes
Student Population 8,545
Student-to-Faculty Ratio..... 19 to 1
“There are approximately 39 international students at Onondaga Community College; they make up 0.4% of all total students.”



Mission Statement

“Onondaga Community College is Central New York’s partner in education for success. Achieving our mission through:

- Student Access, Retention, Completion, Transfer
- Academic Excellence
- Student Engagement and Support
- Career and Workforce Advancement
- Responsible Stewardship of Resources
- Community Engagement”

Prayer Request:

1. Luke 10.2 Jesus said to them: “The harvest is plentiful, but the laborers are few; therefore beseech the Lord of the harvest to send out laborers into His harvest.”
2. Please continue to pray for a revival among the Christians students, faculty, and staff.
3. Pray that the revival will turn into an awakening among the non-Christian student, faculty, and staff.
4. Please pray for the students who may be living on campus. Pray for sexual purity in the dorms and on campus.
5. Please remember to pray for any international students who may be on campus. We are praying that they would be exposed to the gospel and receive Jesus as their savior. Pray for those who make a commitment to Christ, that when they return home, they would stand strong as a witness for Christ.



Orange County Community College

Middletown, NY



This Campus Has NOT Been Adopted

Known Christian Groups on Campus:

All 4 Jesus Matthew Whitson (Advisor)

DAY
15

President..... Kristine Young
Type..... 2-year, Public
Campus Housing No
Student Population 5,862
Student-to-Faculty Ratio 18 to 1
“There are approximately 13 international students at Orange County Community College; they make up 0.2% of all total students.”

***Additional Campuses:**
Newburgh, NY



Mission Statement

“We are a community of learners dedicated to providing high-quality and accessible educational and enrichment opportunities that foster lifelong learning.”

Vision Statement

“Orange County Community College will be an exemplary community college transforming lives through academic excellence, innovation and partnerships.”

Prayer Request:

1. Luke 10.2 Jesus said to them: “The harvest is plentiful, but the laborers are few; therefore beseech the Lord of the harvest to send out laborers into His harvest.”
2. Please continue to pray for a revival among the Christians students, faculty, and staff.
3. Pray that the revival will turn into an awakening among the non-Christian student, faculty, and staff.
4. Please pray for the students who may be living on campus. Pray for sexual purity in the dorms and on campus.
5. Please remember to pray for any international students who may be on campus. We are praying that they would be exposed to the gospel and receive Jesus as their savior. Pray for those who make a commitment to Christ, that when they return home, they would stand strong as a witness for Christ.



Pace University

New York, NY



This Campus Has NOT Been Adopted

DAY
16

Known Christian Groups on Campus:

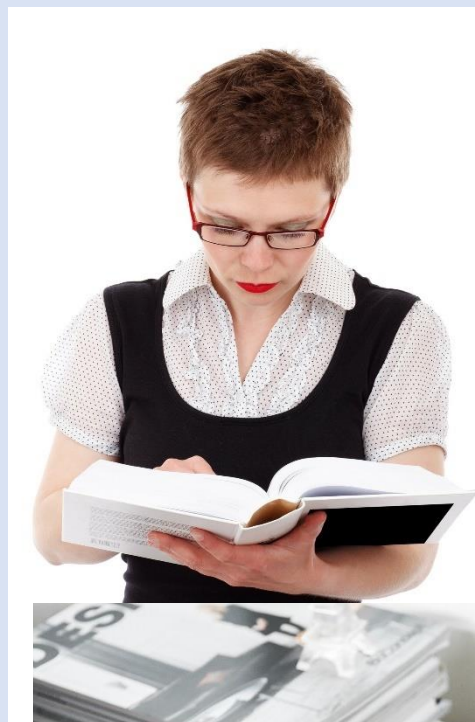
Campus Chaplain.....Sis. Susan Becker
Catholic Student Association.....Christina Little
Christian Fellowship Club?
Cru.....Ryan Oakes
Pensa.....Stephanie Agyemang

President..... Marvin Krislov
Type..... 4-year, Private Non-Profit
Campus Housing Yes
Student Population 12,835
Student-to-Faculty Ratio 14 to 1
International Students (2019)..... 1,905 from at least 48 Countries

Australia, Bahamas, Bangladesh, Brazil, Canada, China, Colombia, Ecuador, Egypt, France, Germany, Ghana, Greece, Hong Kong, India, Indonesia, Israel, Italy, Jamaica, Japan, Jordan, Kuwait, Malaysia, Mexico, Mongolia, Nepal, Netherlands, Nigeria, Norway, Pakistan, Peru, Philippines, Russia, Saudi Arabia, Singapore, South Korea, Spain, Sweden, Taiwan, Thailand, Turkey, Ukraine, United Arab Emirates, United Kingdom, Venezuela, Vietnam.

***Other Campuses:**

Westchester Campus
HAUB Law Campus



Mission Statement

“Pace University transforms lives by combining rigorous academics with real-world experiences. For generations, Pace has launched graduates into career success, and today we’re the country’s number one private, four-year institution for driving upward economic mobility, according to Opportunity Insights. We’re proud to create opportunity for hardworking, ambitious students, regardless of their backgrounds. www.pace.edu/vision-mission.”

Prayer Request:

1. Luke 10.2 Jesus said to them: “The harvest is plentiful, but the laborers are few; therefore beseech the Lord of the harvest to send out laborers into His harvest.”
2. Please continue to pray for a revival among the Christians students, faculty, and staff.
3. Pray that the revival will turn into an awakening among the non-Christian student, faculty, and staff.
4. Please pray for the students who may be living on campus. Pray for sexual purity in the dorms and on campus.
5. Please remember to pray for any international students who may be on campus. We are praying that they would be exposed to the gospel and receive Jesus as their savior. Pray for those who make a commitment to Christ, that when they return home, they would stand strong as a witness for Christ.



Pacific College of Oriental Medicine New York New York, NY

Interim CEO and President Malcolm Youngren
Type..... 4-year, Private For-Profit
Campus Housing No
Student Population 677
Student-to-Faculty Ratio 9 to 1
“There are approximately 4 international students at Pacific College New York; they make up 0.7% of all total students.”

*Additional Campus

San Diego
Chicago



Prayer Request:

1. Luke 10.2 Jesus said to them: “The harvest is plentiful, but the laborers are few; therefore beseech the Lord of the harvest to send out laborers into His harvest.”
2. Please continue to pray for a revival among the Christians students, faculty, and staff.
3. Pray that the revival will turn into an awakening among the non-Christian student, faculty, and staff.
4. Please pray for the students who may be living on campus. Pray for sexual purity in the dorms and on campus.
5. Please remember to pray for any international students who may be on campus. We are praying that they would be exposed to the gospel and receive Jesus as their savior. Pray for those who make a commitment to Christ, that when they return home, they would stand strong as a witness for Christ.



This Campus Has NOT Been Adopted

Known Christian Groups on Campus:

No Known Gospel Witness

DAY
17



Mission Statement

“Pacific College improves lives by educating and inspiring compassionate, skilled leaders of traditional medicine and integrative health sciences.”



Paul Smiths College of Arts and Science

Paul Smiths, NY



This Campus Has NOT Been Adopted

Known Christian Groups on Campus:

InterVarsity..... ?

DAY
18

CEO and President Scott Dalrymple
Type..... 4-year, Private Non-Profit
Campus Housing Yes
Student Population 681
Student-to-Faculty Ratio 12 to 1



Mission Statement

- “To develop career-ready graduates through hands-on, personalized education.
- To educate, research and advocate on issues that improve our planet and the lives of the people that inhabit it.
- To help the Adirondack region be ecologically and economically sustainable.”

Prayer Request:

1. Luke 10.2 Jesus said to them: “The harvest is plentiful, but the laborers are few; therefore beseech the Lord of the harvest to send out laborers into His harvest.”
2. Please continue to pray for a revival among the Christians students, faculty, and staff.
3. Pray that the revival will turn into an awakening among the non-Christian student, faculty, and staff.
4. Please pray for the students who may be living on campus. Pray for sexual purity in the dorms and on campus.
5. Please remember to pray for any international students who may be on campus. We are praying that they would be exposed to the gospel and receive Jesus as their savior. Pray for those who make a commitment to Christ, that when they return home, they would stand strong as a witness for Christ.



Phillips School of Nursing at Mount Sinai Beth Israel New York, NY

Dean..... Todd F. Ambrosia
Type..... 4-year, Private Non-Profit
Campus Housing..... No
Student Population..... 254
Student-to-Faculty Ratio..... 8 to 1



Prayer Request:

1. Luke 10.2 Jesus said to them: “The harvest is plentiful, but the laborers are few; therefore beseech the Lord of the harvest to send out laborers into His harvest.”
2. Please continue to pray for a revival among the Christians students, faculty, and staff.
3. Pray that the revival will turn into an awakening among the non-Christian student, faculty, and staff.
4. Please pray for the students who may be living on campus. Pray for sexual purity in the dorms and on campus.
5. Please remember to pray for any international students who may be on campus. We are praying that they would be exposed to the gospel and receive Jesus as their savior. Pray for those who make a commitment to Christ, that when they return home, they would stand strong as a witness for Christ.



This Campus Has NOT Been Adopted

Known Christian Groups on Campus:

No Known Gospel Witness

DAY
19

About Us:

“Phillips School of Nursing at Mount Sinai Beth Israel (PSN) is proud to be a leader in nursing education, and has been since its inception in 1904. From the beginning, we have offered a progressive nursing curriculum that is continually revised to respond to current health care needs. It should be no surprise that we have twice been designated a Center of Excellence by the National League for Nursing in the category of Creating Environments that Enhance Student Learning and Professional Development, 2014-2023.”



Plaza College Forest Hills, NY

COO and President..... Charles E. Callahan III
Type..... 4-year, Private For-Profit
Campus Housing No
Student Population 948
Student-to-Faculty Ratio 28 to 1



Prayer Request:

1. Luke 10.2 Jesus said to them: “The harvest is plentiful, but the laborers are few; therefore beseech the Lord of the harvest to send out laborers into His harvest.”
2. Please continue to pray for a revival among the Christians students, faculty, and staff.
3. Pray that the revival will turn into an awakening among the non-Christian student, faculty, and staff.
4. Please pray for the students who may be living on campus. Pray for sexual purity in the dorms and on campus.
5. Please remember to pray for any international students who may be on campus. We are praying that they would be exposed to the gospel and receive Jesus as their savior. Pray for those who make a commitment to Christ, that when they return home, they would stand strong as a witness for Christ.



This Campus Has NOT Been Adopted

Known Christian Groups on Campus:

No Known Gospel Witness

DAY
20



Mission Statement

“Plaza College is a career-focused institution with academic programs designed to meet the needs of a diverse population. Rooted in a tradition of excellence, Plaza educates its students to compete and succeed in an ever-changing work-force.”



Pomeroy College of Nursing at Crouse Hospital Syracuse, NY



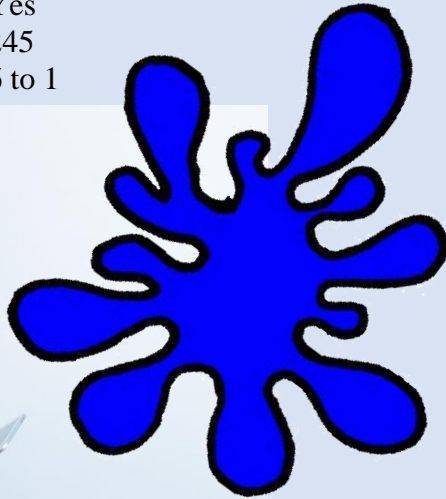
This Campus Has NOT Been Adopted

Known Christian Groups on Campus:

No Known Gospel Witness

DAY
21

Dean Patricia Morgan
Type..... 2-year, Private Non-Profit
Campus Housing Yes
Student Population 245
Student-to-Faculty Ratio 6 to 1



Mission Statement

“The Pomeroy College of Nursing at Crouse Hospital’s mission is to prepare a clinically competent professional nurse for hospital and community practice.”

Prayer Request:

1. Luke 10.2 Jesus said to them: “The harvest is plentiful, but the laborers are few; therefore beseech the Lord of the harvest to send out laborers into His harvest.”
2. Please continue to pray for a revival among the Christians students, faculty, and staff.
3. Pray that the revival will turn into an awakening among the non-Christian student, faculty, and staff.
4. Please pray for the students who may be living on campus. Pray for sexual purity in the dorms and on campus.
5. Please remember to pray for any international students who may be on campus. We are praying that they would be exposed to the gospel and receive Jesus as their savior. Pray for those who make a commitment to Christ, that when they return home, they would stand strong as a witness for Christ.



Pratt Institute-Main Brooklyn, NY



This Campus Has NOT Been Adopted

Known Christian Groups on Campus:
Remnant Christian Fellowship Sarah Tsui

DAY
22

President.....Frances Bronet
Type4-year, Private Non-Profit
Campus Housing.....Yes
Student Population4,353
Student-to-Faculty Ratio.....9 to 1
International Students (2019).....1,844 from at least 44 Countries
Australia, Bahamas, Bangladesh, Brazil, Canada, China, Colombia,
Ecuador, Egypt, France, Germany, Greece, Hong Kong, India, Indone-
sia, Iran, Israel, Italy, Japan, Jordan, Kuwait, Malaysia, Mexico, Mon-
golia, Nepal, Netherlands, Nigeria, Norway, Pakistan, Peru, Philip-
pines, Russia, Saudi Arabia, Singapore, South Korea, Spain, Sweden,
Taiwan, Thailand, Turkey, Ukraine, United Kingdom, Venezuela, Vi-
etnam.

***Other Locations:**

Manhattan Campus
Pratt MWP: Utica, NY



Mission Statement

“The mission of Pratt Institute is to educate artists and creative professionals to be responsible contributors to society. Pratt seeks to instill in all graduates aes-
thetic judgment, professional knowledge, collaborative skills, and technical ex-
pertise. With a firm grounding in the liberal arts and sciences, a Pratt education
blends theory with creative application in preparing graduates to become leaders
in their professions. Pratt enrolls a diverse group of highly talented and dedicated
students, challenging them to achieve their full potential.”

Prayer Request:

1. Luke 10.2 Jesus said to them: “The harvest is plentiful, but the la-
borers are few; therefore beseech the Lord of the harvest to send
out laborers into His harvest.”
2. Please continue to pray for a revival among the Christians stu-
dents, faculty, and staff.
3. Pray that the revival will turn into an awakening among the non-
Christian student, faculty, and staff.
4. Please pray for the students who may be living on campus. Pray
for sexual purity in the dorms and on campus.
5. Please remember to pray for any international students who may
be on campus. We are praying that they would be exposed to the
gospel and receive Jesus as their savior. Pray for those who make a
commitment to Christ, that when they return home, they would
stand strong as a witness for Christ.



Rabbinical Academy Mesivta Rabbi Chaim Berlin Brooklyn, NY



This Campus Has NOT Been Adopted

Known Christian Groups on Campus:

No Known Gospel Witness

DAY
23

President..... Avrohom C. Fruchthandler
Type..... 4-year, Private Non-Profit
Campus Housing Yes
Student Population 336
Student-to-Faculty Ratio 22 to 1
“There are approximately 6 [international](#) students at Rabbinical Academy Mesivta Rabbi Chaim Berlin; they make up 1.9% of all total students.”



Mission Statement

“Rabbinical Academy Mesivta Rabbi Chaim Berlin seeks to train students in the skills required for understanding, studying and mastering the Talmud and the considerable body of traditional Jewish thought. At the same time we are committed to the understanding that knowledge is a means to a larger end. We seek therefore to help students build a world outlook drawn from the ethical and moral concepts of Judaism. If scholarship is to have a significant value it must orient its students to a way of life that, by its own definition, is good and moral.”



Prayer Request:

1. Luke 10.2 Jesus said to them: “The harvest is plentiful, but the laborers are few; therefore beseech the Lord of the harvest to send out laborers into His harvest.”
2. Please continue to pray for a revival among the Christians students, faculty, and staff.
3. Pray that the revival will turn into an awakening among the non-Christian student, faculty, and staff.
4. Please pray for the students who may be living on campus. Pray for sexual purity in the dorms and on campus.
5. Please remember to pray for any international students who may be on campus. We are praying that they would be exposed to the gospel and receive Jesus as their savior. Pray for those who make a commitment to Christ, that when they return home, they would stand strong as a witness for Christ.



Rabbinical College Bobover Yeshiva

Bnei Zion

Brooklyn, NY

President Rabbi Baruch A. Horowitz
Type 4-year, Private Non-Profit
Campus Housing Yes
Student Population 418
Student-to-Faculty Ratio 20 to 1



Prayer Request:

1. Luke 10.2 Jesus said to them: “The harvest is plentiful, but the laborers are few; therefore beseech the Lord of the harvest to send out laborers into His harvest.”
2. Please continue to pray for a revival among the Christians students, faculty, and staff.
3. Pray that the revival will turn into an awakening among the non-Christian student, faculty, and staff.
4. Please pray for the students who may be living on campus. Pray for sexual purity in the dorms and on campus.
5. Please remember to pray for any international students who may be on campus. We are praying that they would be exposed to the gospel and receive Jesus as their savior. Pray for those who make a commitment to Christ, that when they return home, they would stand strong as a witness for Christ.



This Campus Has NOT Been Adopted

Known Christian Groups on Campus:

No Known Gospel Witness

DAY
24

Mission Statement

“The Rabbinical College Bobover Yeshiva aims to carry forward the chain of Jewish learning and career training in an environment where education is personal, but rigorous and challenging. The Yeshiva defines its purpose as teaching students Torah learning skills in order to foster creative scholarship and provide the community with Talmudists, scholars, and well-educated laymen. We identify the following specific mission elements: 1. Train students in the study and analytical interpretation of the classic texts of Judaism. Foster reasoning skills, proficiency in textual analysis, the capacity for legal analysis, and a deftness in the application of advanced logic to methods of argumentation. 2. Prepare students for service careers as Yeshiva teachers, melamdim, mechanchim and maggidei shiur in a wide range of formats. 3. Provide students with the education for pursuing advanced rabbinic degrees that lead to college level teaching or practical rabbinics. 4. Develop in the student a strong moral dimension by fostering an ethical sensibility through the study of Mussar, devotional texts and Talmudic Aggadata. 5. Foster in the student a contemplative spirit, an awareness of the life of the mind and its encouragement. 6. Train those with exceptional gifts for higher research in Talmud.”



Rabbinical College of Ohr Shimon Yisroel Brooklyn, NY



This Campus Has NOT Been Adopted

Known Christian Groups on Campus:

No Known Gospel Witness

DAY
25

PresidentUnavailable
Type4-year, Private Non-Profit
Campus Housing.....Yes
Student Population.....211
Student-to-Faculty Ratio.....15 to 1



Mission Statement

“To produce students who have a firm commitment to their heritage, a strong connection to talmudic scholarship and a dedication to the betterment of their fellow human being and their community.”

Prayer Request:

1. Luke 10.2 Jesus said to them: “The harvest is plentiful, but the laborers are few; therefore beseech the Lord of the harvest to send out laborers into His harvest.”
2. Please continue to pray for a revival among the Christians students, faculty, and staff.
3. Pray that the revival will turn into an awakening among the non-Christian student, faculty, and staff.
4. Please pray for the students who may be living on campus. Pray for sexual purity in the dorms and on campus.
5. Please remember to pray for any international students who may be on campus. We are praying that they would be exposed to the gospel and receive Jesus as their savior. Pray for those who make a commitment to Christ, that when they return home, they would stand strong as a witness for Christ.



Rabbinical Seminary of America

Flushing, NY



This Campus Has NOT Been Adopted

Known Christian Groups on Campus:

No Known Gospel Witness

DAY
26

Dean.....Jason N. Adsit
Type.....4-year, Private Non-Profit
Campus Housing.....Yes
Student Population.....502
Student-to-Faculty Ratio.....35 to 1



Mission Statement

“Since 1933, the Rabbinical Seminary of America has been fulfilling its two-fold objective; to provide young people with an outstanding education of the highest caliber, and to equip them with the training and commitment to serve in leadership positions for communities throughout the New York area and beyond.”

Prayer Request:

1. Luke 10.2 Jesus said to them: “The harvest is plentiful, but the laborers are few; therefore beseech the Lord of the harvest to send out laborers into His harvest.”
2. Please continue to pray for a revival among the Christians students, faculty, and staff.
3. Pray that the revival will turn into an awakening among the non-Christian student, faculty, and staff.
4. Please pray for the students who may be living on campus. Pray for sexual purity in the dorms and on campus.
5. Please remember to pray for any international students who may be on campus. We are praying that they would be exposed to the gospel and receive Jesus as their savior. Pray for those who make a commitment to Christ, that when they return home, they would stand strong as a witness for Christ.



Relay Graduate School of Education New York, NY



This Campus Has NOT Been Adopted

Known Christian Groups on Campus:
No Known Gospel Witness

DAY
27

President Mayme Hostetter
Type 4-year, Private Non-Profit
Campus Housing No
Student Population 3,790
Student-to-Faculty Ratio 35 to 1
“There are approximately 124 international students at Relay Graduate School of Education; they make up 3.1% of all total students.”



Mission Statement

“Relay’s mission is to ensure that all students are taught by outstanding educators. Our vision is to build a more just world where every student has access to outstanding educators and a clear path to a fulfilling life.”

Prayer Request:

1. Luke 10.2 Jesus said to them: “The harvest is plentiful, but the laborers are few; therefore beseech the Lord of the harvest to send out laborers into His harvest.”
2. Please continue to pray for a revival among the Christians students, faculty, and staff.
3. Pray that the revival will turn into an awakening among the non-Christian student, faculty, and staff.
4. Please pray for the students who may be living on campus. Pray for sexual purity in the dorms and on campus.
5. Please remember to pray for any international students who may be on campus. We are praying that they would be exposed to the gospel and receive Jesus as their savior. Pray for those who make a commitment to Christ, that when they return home, they would stand strong as a witness for Christ.



Rensselaer Polytechnic Institute

Troy, NY



President..... Shirley Ann Jackson
Type..... 4-year, Private Non-Profit
Campus Housing Yes
Student Population 7,501
Student-to-Faculty Ratio 17 to 1
International Students (2019)..... 1,625 from at least 43 Countries
Australia, Bahamas, Bangladesh, Brazil, Canada, China, Colombia,
Ecuador, Egypt, France, Germany, Ghana, Greece, Hong Kong, India,
Indonesia, Iran, Israel, Italy, Jamaica, Japan, Jordan, Kuwait, Malaysia,
Mexico, Nepal, Nigeria, Pakistan, Philippines, Russia, Saudi Arabia,
Singapore, South Korea, Spain, Sri Lanka, Sweden, Taiwan, Thailand,
Turkey, Ukraine, United Kingdom, Venezuela, Vietnam.



Prayer Request:

1. Luke 10.2 Jesus said to them: “The harvest is plentiful, but the laborers are few; therefore beseech the Lord of the harvest to send out laborers into His harvest.”
2. Please continue to pray for a revival among the Christians students, faculty, and staff.
3. Pray that the revival will turn into an awakening among the non-Christian student, faculty, and staff.
4. Please pray for the students who may be living on campus. Pray for sexual purity in the dorms and on campus.
5. Please remember to pray for any international students who may be on campus. We are praying that they would be exposed to the gospel and receive Jesus as their savior. Pray for those who make a commitment to Christ, that when they return home, they would stand strong as a witness for Christ.

This Campus Has NOT Been Adopted

Known Christian Groups on Campus:

Catholic Chaplain Fr. Jamie R. Fazio
Cru ?
Rensselaer Christian Association ?
Chinese Christian Fellowship ?
Newman Catholic Fellowship ?

DAY
28



Mission Statement

“Rensselaer educates the leaders of tomorrow for technologically based careers. We celebrate discovery, and the responsible application of technology, to create knowledge and global prosperity.”



Roberts Wesleyan College

Rochester, NY



President Deana L. Porterfield
 Type..... 4-year, Private Non-Profit
 Campus Housing Yes
 Student Population 1,706
 Student-to-Faculty Ratio 13 to 1
International Students (2019) 67 from at least 19 Countries
 Australia, Brazil, Canada, China, Colombia, Egypt, France, India,
 Jamaica, Japan, Malaysia, Mexico, Netherlands, Nigeria, Saudi Ara-
 bia, South Korea, Spain, Sweden, United Kingdom.



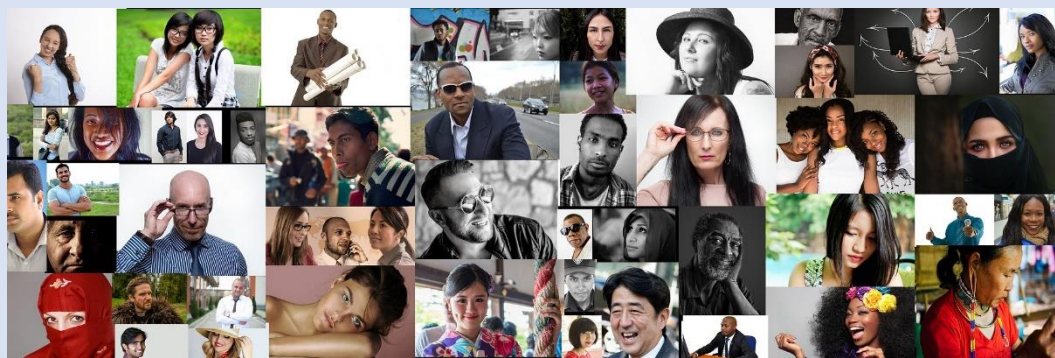
Prayer Request:

1. Luke 10.2 Jesus said to them: "The harvest is plentiful, but the laborers are few; therefore beseech the Lord of the harvest to send out laborers into His harvest."
2. Please continue to pray for a revival among the Christians students, faculty, and staff.
3. Pray that the revival will turn into an awakening among the non-Christian student, faculty, and staff.
4. Please pray for the students who may be living on campus. Pray for sexual purity in the dorms and on campus.
5. Please remember to pray for any international students who may be on campus. We are praying that they would be exposed to the gospel and receive Jesus as their savior. Pray for those who make a commitment to Christ, that when they return home, they would stand strong as a witness for Christ.

This Campus Has NOT Been Adopted

Known Christian Groups on Campus:

Interim VP for Student & Organizational Development Kristen M. Brown
 Campus Pastor..... Gerald Coleman
 Director of Chapel..... Wally Fleming
 Chapel Music Director Anthony Hoisington
 Prayer Partners ?
 Small Groups and Bible Study ?
 Ministry Groups ?



Mission Statement

"As a community of learners committed to historic Christianity, Roberts Wesleyan College seeks to prepare thoughtful, spiritually mature, service-oriented people who will help transform society."



DAY
29

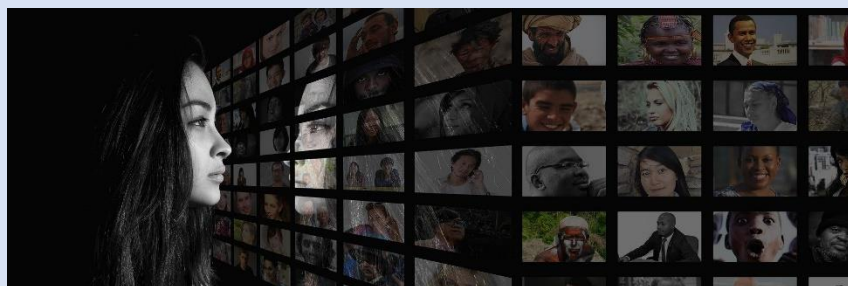
Rochester Institute of Technology

Rochester, NY

President David C. Munson Jr.
 Type..... 4-year, Private Non-Profit
 Campus Housing Yes
 Student Population 16,158
 Student-to-Faculty Ratio 13 to 1

International Students (2019) 2,583 from at least 47 Countries

Australia, Bangladesh, Brazil, Canada, China, Colombia, Ecuador, Egypt, France, Germany, Ghana, Greece, Hong Kong, India, Indonesia, Iran, Israel, Italy, Jamaica, Japan, Jordan, Kenya, Kuwait, Malaysia, Mexico, Mongolia, Nepal, Nigeria, Oman, Pakistan, Philippines, Russia, Saudi Arabia, Singapore, South Korea, Spain, Sri Lanka, Sweden, Taiwan, Thailand, Turkey, Ukraine, United Arab Emirates, United Kingdom, Venezuela, Vietnam.



Prayer Request:

1. Luke 10.2 Jesus said to them: "The harvest is plentiful, but the laborers are few; therefore beseech the Lord of the harvest to send out laborers into His harvest."
2. Please continue to pray for a revival among the Christians students, faculty, and staff.
3. Pray that the revival will turn into an awakening among the non-Christian student, faculty, and staff.
4. Please pray for the students who may be living on campus. Pray for sexual purity in the dorms and on campus.
5. Please remember to pray for any international students who may be on campus. We are praying that they would be exposed to the gospel and receive Jesus as their savior. Pray for those who make a commitment to Christ, that when they return home, they would stand strong as a witness for Christ.



This Campus Has NOT Been Adopted

Known Christian Groups on Campus:

Catholic Chaplain..... Nora Bradbury-Haehl
 Lutheran/Episcopal Campus Ministry Craig Swanson
 Episcopal Chaplain Laurence Wainwright-Marks
 Cru Director Zachary Hanje
 Cru Staff..... Dakota Tiger
 Cru Staff..... Heidi Tiger
 Cru Staff..... Catherine Mast
 Cru Staff..... Daron Ladson
 Cru Staff..... Mercy Gbenjo
 Newman Catholic Campus Minister .. Michael Vernarelli
 Newman Catholic Staff James Miller
 Newman Catholic Staff Kristen Leschhorn
 Glory House International Staff Yolanda Sayres
 Glory House International Staff Kenneth Sayres
 InterVarsity Staff Jileen Herman

DAY
30



Mission Statement

"At Rochester Institute of Technology, we shape the future and improve the world through creativity and innovation. As an engaged, intellectually curious, and socially conscious community, we leverage the power of technology, the arts, and design for the greater good."



Rockefeller University

New York, NY



This Campus Has NOT Been Adopted

Known Christian Groups on Campus:

No Known Gospel Witness

DAY
31

PresidentRichard P. Lifton
Type4-year, Private Non-Profit
Campus Housing.....Yes
Student Population.....225
Student-to-Faculty Ratio.....Not Available
“There are approximately 76 international students at Rockefeller University; they make up 31.8% of all total students.”



Mission Statement

“The mission of the graduate program at The Rockefeller University, a world-renowned center for research and graduate education in the biosciences, is to provide the highest quality education in science for the benefit of humankind. Founded by John D. Rockefeller Sr. in 1901 as the nation's first institute for medical research, the University has a unique laboratory-based structure that encourages interdisciplinary research, which today plays an increasingly critical role in scientific achievement. The rigorous academic training and research environment enables students to develop creativity and discover their own capabilities.”



Prayer Request:

1. Luke 10.2 Jesus said to them: “The harvest is plentiful, but the laborers are few; therefore beseech the Lord of the harvest to send out laborers into His harvest.”
2. Please continue to pray for a revival among the Christians students, faculty, and staff.
3. Pray that the revival will turn into an awakening among the non-Christian student, faculty, and staff.
4. Please pray for the students who may be living on campus. Pray for sexual purity in the dorms and on campus.
5. Please remember to pray for any international students who may be on campus. We are praying that they would be exposed to the gospel and receive Jesus as their savior. Pray for those who make a commitment to Christ, that when they return home, they would stand strong as a witness for Christ.

