

Southern New England Ministry Network

30 Day Prayer Guide



Volume III

Dear Friends of Missions,

Thank you for praying. Thank you for having concern, not only for the future of America, but for the wellbeing of our college students. Thank you for praying for the staff and faculty of these colleges as well. God is still answering prayer.

For the most part campuses are starting to open up. The majority of campuses will hold in-person classes this coming Fall. The catch, however, is that they are requiring everyone to be fully vaccinated. This could cause some unrest among the student bodies of various schools. We will have to wait and see.

This is now the third prayer guide, in a series of five prayer guides for Connecticut, Rhode Island and Massachusetts. It is meant to be a tool to help you pray more specifically and with more information. We are asking people from every Assemblies of God church to pray. We asking people to pray for a revival among the Christian students that will erupt into an awakening among the unsaved students.

We are praying for a move of God to shake our campuses the likes of which we have not seen in our generation. With that in mind we are praying for workers. Jesus told us that *The harvest is plentiful, but the laborers are few; therefore, plead with the Lord of the harvest to send out laborers into His harvest (NASB) Luke 10.2*. We hope you will join us in prayer.

In this prayer guide you will find statistics for each school. Just a little information to make your prayers more precise. Also, in this prayer guide you will find information on the known Christian groups on campus. When possible, I have supplied the names of the individuals who are leading those groups.

Some schools do not show student leader's names. When that happens, we have looked for the group's faculty advisor. That name appears and is so marked. Often, we could not find a contact

person at all. When that happened, we inserted a question mark.

Please take into account that Spring semester recently finished, and with that a change of leadership most likely occurred in many of these groups. Remember to pray for the leader listed as well as future leaders. There may be new leaders of these groups whose names we do not know.

We are always surprised when we see that a school has a chaplain. Some schools have multiple chaplains. We need to pray that these men and women will be sensitive to the leading of the Holy Spirit. The Holy Spirit is not bound by denominations or back grounds. He is able to reach into the seeking heart.

Pray for the students who live in student housing. We have listed the schools which provide on campus housing. A lot of really crazy stuff happens in dorms, especially co-ed dorms!

Finally, we wanted to let you know that this prayer guide was compiled with data from the National Center for Education Statistics ([NCES](#)) as well as each school's individual website.

Additionally, new to this volume, we have added a section on international students. We are using the [College Factual](#) website for all pertinent data.

Thank You again for investing time into this next generation. Only eternity will tell what we helped along and what we were able to hinder.

Be Blessed,
Joe and Heidi Barrale
[Assemblies of God U.S. Missionaries](#)
[Chi Alpha](#) / [Adopt-A-Campus.org](#)

A List of Schools Included in this Prayer Guide

Day 1 Bentley University

Day 2 Berklee College of Music

Day 3 Berkshire Community College

Day 4 Boston Architectural College

Day 5 Boston College

Day 6 Boston Graduate School of Psychoanalysis Inc

Day 7 Brandeis University

Day 8 Bridgewater State University

Day 9 Bristol Community College

Day 10 Bunker Hill Community College

Day 11 Cambridge College

Day 12 Cape Cod Community College

Day 13 Clark University

Day 14 College of Our Lady of the Elms

Day 15 College of the Holy Cross

Day 16 Curry College

Day 17 Dean College

Day 18 Eastern Nazarene College

Day 19 Emerson College

Day 20 Emmanuel College

Day 21 Endicott College

Day 22 FINE Mortuary College

Day 23 Fisher College

Day 24 Fitchburg State University

Day 25 Framingham State University

Day 26 Franklin W Olin College of Engineering

Day 27 Gordon College

Day 28 Gordon-Conwell Theological Seminary

Day 29 Greenfield Community College

Day 30 Hampshire College

Bentley University

Waltham, MA



This Campus Has NOT Been Adopted

DAY
1

Known Christian Groups on Campus:

Office of Spiritual LifeRev. Robin Olson
Bentley Catholic Association.....“Student Led”
Catholic ChaplainFr. Ted Brown
Cru Bentley“Student Led”
Protestant Chaplain InternAlyssa Burleson

President..... E. LaBrent Chrite
Type..... 4-year Private Non-Profit
Campus Housing Yes
Student Population 5,314
Student-to-Faculty Ratio 11 to 1

International Students (2019)..... 1,173 from at least 47 Countries.

Australia, Brazil, Canada, China, Colombia, Ecuador, Egypt, France, Germany, Ghana, Greece, Hong Kong, India, Indonesia, Iran, Israel, Italy, Jamaica, Japan, Jordan, Kenya, Kuwait, Malaysia, Mexico, Mongolia, Nepal, Netherlands, Nigeria, Norway, Oman, Pakistan, Peru, Philippines, Russia, Saudi Arabia, Singapore, South Korea, Spain, Sweden, Taiwan, Thailand, Turkey, Ukraine, United Arab Emirates, United Kingdom, Venezuela, Vietnam.



Prayer Request:

- 1) First and foremost, we are praying Luke 10.2 “*The harvest is plentiful, but the laborers are few; therefore, plead with the Lord of the harvest to send out laborers into His harvest.*” (NASB)
- 2) Pray that this summer God calls people specifically to this school, students, staff and faculty.
- 3) Pray for the student groups. Pray that their summer preparation will go smoothly and that they will be positioned, this fall, to see a harvest.
- 4) Pray for a revival among the Christian students. Pray that the revival will spread to an awakening for the whole campus.
- 5) Pray for the international students. Pray that they will be receptive to the gospel. Pray that they will be Christian Ambassadors to their home country.



Covid-19 Update:

“As of May 12, 2021, all individuals age 12 and older are eligible for the COVID-19 vaccine. As Bentley prepares for a fully open and operational 2021-2022 academic year, consistent with state and federal guidance, all undergraduate and graduate students who will be on campus this fall will be required to be vaccinated against COVID-19 before the start of the fall 2021 semester.”



Berklee College of Music Boston, MA



This Campus Has NOT Been Adopted

DAY
2

Known Christian Groups on Campus:

Berklee Christian Fellowship.....?
Berklee House of Prayer?
Catholic Community at Berklee.....?
InterVarsity?

Covid-19 Update:

“Berklee College of Music and Boston Conservatory at Berklee will plan to fully return to on-campus instruction at their Boston campus facilities starting in September 2021. On-campus offerings for the fall will include classroom learning, private lessons, in-person studio classes, studio recording, ensemble participation, and live performances, creating the vibrancy, connections, and interactions that make the Berklee community a unique place to learn and grow as artists.”

President.....Erica Muhl
Type4-year, Private Non-Profit
Campus Housing.....Yes
Student Population6,999
Student-to-Faculty Ratio.....10 to 1
International Students (2019).....1,983 from at least 44 Countries.

Australia, Bahamas, Bangladesh, Brazil, Canada, China, Colombia, Ecuador, Egypt, France, Germany, Ghana, Greece, Hong Kong, India, Indonesia, Iran, Israel, Italy, Jamaica, Japan, Jordan, Kenya, Malaysia, Mexico, Mongolia, Netherlands, Norway, Pakistan, Peru, Philippines, Russia, Singapore, South Korea, Spain, Sri Lanka, Sweden, Taiwan, Thailand, Turkey, Ukraine, United Kingdom, Venezuela, Vietnam.

***Other Locations:**

Valencia Campus, Spain
NYC Campus, New York



Prayer Request:

- 1) First and foremost, we are praying Luke 10.2 *“The harvest is plentiful, but the laborers are few; therefore, plead with the Lord of the harvest to send out laborers into His harvest.”* (NASB)
- 2) Pray that this summer God calls people specifically to this school, students, staff and faculty.
- 3) Pray for the student groups. Pray that their summer preparation will go smoothly and that they will be positioned, this fall, to see a harvest.
- 4) Pray for a revival among the Christian students. Pray that the revival will spread to an awakening for the whole campus.
- 5) Pray for the international students. Pray that they will be receptive to the gospel. Pray that they will be Christian Ambassadors to their home country.



Berkshire Community College Pittsfield, MA



This Campus Has NOT Been Adopted

Known Christian Groups on Campus:
No Known Gospel Witness

DAY
3

President Ellen Kennedy
Type 2-year, Public
Campus Housing No
Student Population 1,627
Student-to-Faculty Ratio 10 to 1
There are approximately 8 international students at Berkshire Community College; they make up 0.5% of all total students.



Covid-19 Update:

“As of June 3, 2021: Wearing masks on campus is optional, but recommended if you are not vaccinated against COVID-19. ... Club Sports plan to resume outdoor workouts in the late Spring **2021**. We plan for a full resumption of play in **Fall 2021.**”

Prayer Request:

- 1) First and foremost, we are praying Luke 10.2 “*The harvest is plentiful, but the laborers are few; therefore, plead with the Lord of the harvest to send out laborers into His harvest.*” (NASB)
- 2) Pray that this summer God calls people specifically to this school, students, staff and faculty.
- 3) Pray for the student groups. Pray that their summer preparation will go smoothly and that they will be positioned, this fall, to see a harvest.
- 4) Pray for a revival among the Christian students. Pray that the revival will spread to an awakening for the whole campus.
- 5) Pray for the international students. Pray that they will be receptive to the gospel. Pray that they will be Christian Ambassadors to their home country.



Boston Architectural College

Boston, MA



This Campus Has NOT been Adopted

DAY
4

Known Christian Groups on Campus:
No Known Gospel Witness

President..... Mahesh Daas
Type 4-year, Private Non-Profit
Campus Housing..... Yes
Student Population 737
Student-to-Faculty Ratio..... 5 to 1
There are approximately 184 international students at Boston Architectural College; they make up 27.8% of all total students.



Covid-19 Update:

“This fall semester, the BAC plans to offer hybrid learning experiences by reopening the campus buildings and combining in-person and remote learning to provide our students the best of both worlds. So, for those of you who will not be able to move to the Boston region, we will continue to offer remote or fully online learning.”



Prayer Request:

- 1) First and foremost, we are praying Luke 10.2 “*The harvest is plentiful, but the laborers are few; therefore, plead with the Lord of the harvest to send out laborers into His harvest.*” (NASB)
- 2) Pray that this summer God calls people specifically to this school, students, staff and faculty.
- 3) Pray for the student groups. Pray that their summer preparation will go smoothly and that they will be positioned, this fall, to see a harvest.
- 4) Pray for a revival among the Christian students. Pray that the revival will spread to an awakening for the whole campus.
- 5) Pray for the international students. Pray that they will be receptive to the gospel. Pray that they will be Christian Ambassadors to their home country.



Boston College Chestnut Hill, MA



This Campus Has NOT Been Adopted

DAY
5

Known Christian Groups on Campus:

Campus Ministry Director..... Fr. Tony Penna
Campus Ministry Associate Director Chris Darcy
Campus Ministry Associate Director Ryan Heffernan
Campus Minister for “4Boston”..... Carly Anderson
Campus Minister for “Liturgical Arts” ... Meyer Chambers
Campus Minister for “CLC” Christine Cichello
Campus Minister for “Arrupe”..... Emily Egan
Campus Minister for “Multi-Faith Programs”
..... Rev. James Hairston
Campus Minister for “Retreats”..... Kelly Hughes
Campus Minister for “Liturgical Ministries”
..... Billy Kavula
Campus Minister for “Catechesis”..... Ellen Modica
Campus Minister for “Kairos” Marissa Papula
Campus Minister for “Pastoral Counseling”
..... Rick Rossi
Campus Minister Fr. Nathaniel Romano
Asian Baptist Student Koinonia..... ?
Asian Christian Fellowship..... ?
Christian Legal Society, BC Law School ?
Episcopal Eagles..... ?
InterVarsity Christian Fellowship..... ?
Multi-Cultural Christian Fellowship..... ?
Orthodox Christian Fellowship..... ?

President Fr. William P. Leahy
Type..... 4-year, Private Non-Profit
Campus Housing Yes
Student Population 14,747
Student-to-Faculty Ratio 13 to 1

International Students (2019) 1,731 from at least 49 Countries.

Australia, Bahamas, Bangladesh, Brazil, Canada, China, Colombia, Ecuador, Egypt, France, Germany, Ghana, Greece, Hong Kong, India, Indonesia, Iran, Israel, Italy, Jamaica, Japan, Jordan, Kenya, Kuwait, Malaysia, Mexico, Mongolia, Nepal, Netherlands, Nigeria, Norway, Pakistan, Peru, Philippines, Russia, Saudi Arabia, Singapore, South Korea, Spain, Sri Lanka, Sweden, Taiwan, Thailand, Turkey, Ukraine, United Arab Emirates, United Kingdom, Venezuela, Vietnam.



Prayer Request:

- 1) First and foremost, we are praying Luke 10.2 “*The harvest is plentiful, but the laborers are few; therefore, plead with the Lord of the harvest to send out laborers into His harvest.*” (NASB)
- 2) Pray that this summer God calls people specifically to this school, students, staff and faculty.
- 3) Pray for the student groups. Pray that their summer preparation will go smoothly and that they will be positioned, this fall, to see a harvest.
- 4) Pray for a revival among the Christian students. Pray that the revival will spread to an awakening for the whole campus.
- 5) Pray for the international students. Pray that they will be receptive to the gospel. Pray that they will be Christian Ambassadors to their home country.

Covid-19 Update:

“I write to further update you on plans regarding the resumption of regular University operations for the 2021-22 academic year.

With the recent announcements by the Governor of Massachusetts and the Mayor of Boston, effective May 29, 2021, Boston College is no longer subject to occupancy restrictions in offices or classroom facilities. As such, all current capacity limitations on campus classrooms, workspaces, and outdoor areas will be rescinded.”



Boston Graduate School of Psychoanalysis Inc Brookline, MA



This Campus Has NOT Been Adopted

Known Christian Groups on Campus:

No Known Gospel Witness

DAY
6

President..... Jane Snyder
Type..... 4-year, Private Non-Profit
Campus Housing No
Student Population 130
Student-to-Faculty Ratio Unavailable
There are approximately 23 international students at Boston Graduate School of Psychoanalysis; they make up 17.0% of all total students.



Prayer Request:

- 1) First and foremost, we are praying Luke 10.2 *"The harvest is plentiful, but the laborers are few; therefore, plead with the Lord of the harvest to send out laborers into His harvest."* (NASB)
- 2) Pray that this summer God calls people specifically to this school, students, staff and faculty.
- 3) Pray for the student groups. Pray that their summer preparation will go smoothly and that they will be positioned, this fall, to see a harvest.
- 4) Pray for a revival among the Christian students. Pray that the revival will spread to an awakening for the whole campus.
- 5) Pray for the international students. Pray that they will be receptive to the gospel. Pray that they will be Christian Ambassadors to their home country.



Covid-19 Update:
"The One Year Program enriches the work of people who are interested in understanding and working with individuals, families or groups, improving personal relationships, and enhancing their quality of life. ...Classes for the 2021-2022 year will be held online via Zoom videoconferencing on Wednesday evenings, beginning on September 8th. The classes are back-to-back (5:30-7:00 and 7:10-8:40), and meet every other week for 10 weeks/semester. Courses will be taught by Dr. Paula Berman and Dr. Lynn Perlman."



Brandeis University

Waltham, MA



This Campus Has Not Been Adopted

DAY

7

Known Christian Groups on Campus:

Protestant Chaplain..... Rev. Matt Carrier
 Asian Baptist Student Koinonia ?
 Brandeis Graduate Christian Fellowship... ?
 Catholic Student Organization ?
 Cru Brandeis Christian Fellowship ... ?

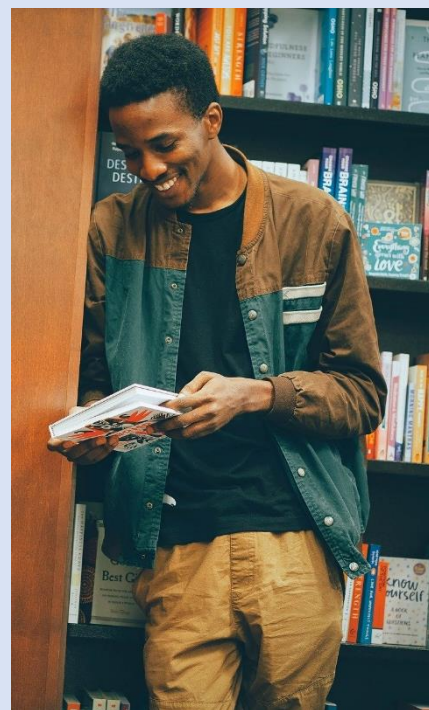
President..... Ronald D. Liebowitz
 Type 4-year, Private Non-Profit
 Campus Housing Yes
 Student Population 5,825
 Student-to-Faculty Ratio 10 to 1
International Students (2019)..... 1,572 from at least 44 Countries.

Australia, Bangladesh, Brazil, Canada, China, Colombia, Ecuador, Egypt, France, Germany, Ghana, Greece, Hong Kong, India, Indonesia, Iran, Israel, Italy, Jamaica, Japan, Jordan, Kenya, Malaysia, Mexico, Mongolia, Nepal, Netherlands, Nigeria, Pakistan, Philippines, Russia, Saudi Arabia, Singapore, South Korea, Spain, Sri Lanka, Sweden, Taiwan, Thailand, Turkey, Ukraine, United Kingdom, Venezuela, Vietnam.



Prayer Request:

- 1) First and foremost, we are praying Luke 10.2 *“The harvest is plentiful, but the laborers are few; therefore, plead with the Lord of the harvest to send out laborers into His harvest.”* (NASB)
- 2) Pray that this summer God calls people specifically to this school, students, staff and faculty.
- 3) Pray for the student groups. Pray that their summer preparation will go smoothly and that they will be positioned, this fall, to see a harvest.
- 4) Pray for a revival among the Christian students. Pray that the revival will spread to an awakening for the whole campus.
- 5) Pray for the international students. Pray that they will be receptive to the gospel. Pray that they will be Christian Ambassadors to their home country.



Covid-19 Update:

“Brandeis has learned a great deal about operating safely during the COVID-19 pandemic from our successful in-person operations in fall 2020 and spring 2021. Our sustained low infection rates, the advent of effective vaccines, and our community’s demonstrated solidarity in embracing public health practices give us the confidence to plan to offer a robust, safe, in-person experience in fall 2021. We have implemented many successful innovations throughout this unprecedented year, and we look forward to incorporating these into our classes and community activities this fall.”



Bridgewater State University

Bridgewater, MA



This Campus Has NOT Been Adopted

DAY
8

Known Christian Groups on Campus:

Christian Fellowship Center ?
InterVarsity Christian Fellowship Kerin Ziegler
Salvation Prayer Youth Ministry Doreen Acheampong

President Frederick W. Clark
Type 4-year Public
Campus Housing Yes
Student Population 10,881
Student-to-Faculty Ratio 19 to 1
International Students (2019) 84 from at least 25 Countries.

Australia, Brazil, Canada, China, Colombia, Germany, Hong Kong, India, Japan, Kenya, Mexico, Nepal, Netherlands, Nigeria, Norway, Philippines, Saudi Arabia, South Korea, Taiwan, Thailand, Turkey, Ukraine, United Kingdom, Venezuela.



Prayer Request:

- 1) First and foremost, we are praying Luke 10.2 *"The harvest is plentiful, but the laborers are few; therefore, plead with the Lord of the harvest to send out laborers into His harvest."* (NASB)
- 2) Pray that this summer God calls people specifically to this school, students, staff and faculty.
- 3) Pray for the student groups. Pray that their summer preparation will go smoothly and that they will be positioned, this fall, to see a harvest.
- 4) Pray for a revival among the Christian students. Pray that the revival will spread to an awakening for the whole campus.
- 5) Pray for the international students. Pray that they will be receptive to the gospel. Pray that they will be Christian Ambassadors to their home country.



Covid-19 Update:

"We know what a challenging year this has been for you. As a result of the pandemic, you were unable to participate in much of the traditional college experience. In the fall, we are planning to be back fully in-person and on-campus. ...

Bridgewater State University will return to a full slate of sports competition for the Fall 2021 season, including men's and women's cross country, field hockey, football, men's golf, men's and women's soccer, and volleyball."



Bristol Community College

Fall River, MA



This Campus Has NOT Been Adopted

Known Christian Groups on Campus:

Catholic Student Association ?

Christian Fellowship ?

DAY
9

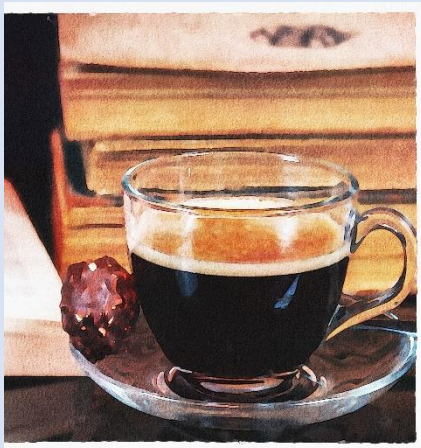
President Laura L. Douglas
Type 2-year, Public
Campus Housing No
Student Population 6,851
Student-to-Faculty Ratio 16 to 1
There are approximately 2 international students at Bristol Community College; they make up 0.0% of all total students.

***Other Locations:**

New Bedford

Taunton

Atrtleboro



Covid-19 Update:

“Bristol Community College is preparing to increase on-campus learning and support services. The process of returning to Bristol has been deliberate and will consist of a phased-in approach over a systematic period of time. As we enter the reopening portion of our plan, we will continue to follow our “Bristol Together” plan and constantly monitor the work of the Massachusetts Department of Public Health (DPH) and Center for Disease Control (CDC) as keeping our campus and community as healthy and safe as possible continues to be our top priority.”

Prayer Request:

- 1) First and foremost, we are praying Luke 10.2 “*The harvest is plentiful, but the laborers are few; therefore, plead with the Lord of the harvest to send out laborers into His harvest.*” (NASB)
- 2) Pray that this summer God calls people specifically to this school, students, staff and faculty.
- 3) Pray for the student groups. Pray that their summer preparation will go smoothly and that they will be positioned, this fall, to see a harvest.
- 4) Pray for a revival among the Christian students. Pray that the revival will spread to an awakening for the whole campus.
- 5) Pray for the international students. Pray that they will be receptive to the gospel. Pray that they will be Christian Ambassadors to their home country.



Bunker Hill Community College

Boston, MA



This Campus Has NOT Been Adopted

Known Christian Groups on Campus:

Christian Fellowship Club

DAY
10

President Pam Eddinger

Type 2-year, Public

Campus Housing No

Student Population 11,352

Student-to-Faculty Ratio 22 to 1

There are approximately 553 international students at Bunker Hill Community College; they make up 4.4% of all total students.

***Other Locations:**

Charlestown

Chelsea



Covid-19 Update:

"Most fall 2021 classes will be taught remotely through the delivery methods outlined in the chart below. Certain courses will be held face-to-face or through a combination of online and face-to-face sessions."

Prayer Request:

- 1) First and foremost, we are praying Luke 10.2 *"The harvest is plentiful, but the laborers are few; therefore, plead with the Lord of the harvest to send out laborers into His harvest."* (NASB)
- 2) Pray that this summer God calls people specifically to this school, students, staff and faculty.
- 3) Pray for the student groups. Pray that their summer preparation will go smoothly and that they will be positioned, this fall, to see a harvest.
- 4) Pray for a revival among the Christian students. Pray that the revival will spread to an awakening for the whole campus.
- 5) Pray for the international students. Pray that they will be receptive to the gospel. Pray that they will be Christian Ambassadors to their home country.



Cambridge College Boston, MA



This Campus Has NOT Been Adopted

Known Christian Groups on Campus:

Unable to locate this information

DAY

11

President..... Deborah C. Jackson
Type..... 4-year, Private Non-Profit
Campus Housing No
Student Population 2,356
Student-to-Faculty Ratio 11 to 1
There are approximately 180 international students at Cambridge College; they make up 8.1% of all total students.

***Other Locations:**

Lawrence
Puerto Rico
Southern California
Springfield



Covid-19 Update:

“Dear Cambridge College community: ... national and local guidance, is to return to campus for the fall semester and we must consider what a return to campus might entail for all ... findings of this summer pilot will guide our planning for a fall return to campus and enable us, in a timely fashion, to prepare the campus ...”

Prayer Request:

- 1) First and foremost, we are praying Luke 10.2 *“The harvest is plentiful, but the laborers are few; therefore, plead with the Lord of the harvest to send out laborers into His harvest.”* (NASB)
- 2) Pray that this summer God calls people specifically to this school, students, staff and faculty.
- 3) Pray for the student groups. Pray that their summer preparation will go smoothly and that they will be positioned, this fall, to see a harvest.
- 4) Pray for a revival among the Christian students. Pray that the revival will spread to an awakening for the whole campus.
- 5) Pray for the international students. Pray that they will be receptive to the gospel. Pray that they will be Christian Ambassadors to their home country.



Cape Cod Community College

West Barnstable, MA



This Campus Has NOT Been Adopted

Known Christian Groups on Campus:
No Known Gospel Witness

DAY
12

President John L. Cox
Type 2-year, Public
Campus Housing No
Student Population 2,907
Student-to-Faculty Ratio 11 to 1



Covid-19 Update:

“4Cs Fall 2021 Class to Be Offered Online, Remote, Hybrid, and Face-to-Face. ... Cape Cod Community College (4Cs) will be expanding face-to-face options for Fall 2021 classes starting in September.”

Prayer Request:

- 1) First and foremost, we are praying Luke 10.2 *“The harvest is plentiful, but the laborers are few; therefore, plead with the Lord of the harvest to send out laborers into His harvest.”* (NASB)
- 2) Pray that this summer God calls people specifically to this school, students, staff and faculty.
- 3) Pray for the student groups. Pray that their summer preparation will go smoothly and that they will be positioned, this fall, to see a harvest.
- 4) Pray for a revival among the Christian students. Pray that the revival will spread to an awakening for the whole campus.
- 5) Pray for the international students. Pray that they will be receptive to the gospel. Pray that they will be Christian Ambassadors to their home country.



Clark University Worcester, MA



This Campus Has NOT Been Adopted

DAY
13

Known Christian Groups on Campus:

Christian Student Fellowship..... Nardin Sayoufi
InterVarsity Christian Fellowship Joseph Teng

President.....David Fithian
Type4-year, Private Non-Profit
Campus Housing.....Yes
Student Population3,498
Student-to-Faculty Ratio.....11 to 1

International Students (2019).....670 from at least 47 Countries.

Australia, Bahamas, Bangladesh, Brazil, Canada, China, Colombia, Ecuador, Egypt, France, Germany, Ghana, Greece, Hong Kong, India, Indonesia, Iran, Israel, Italy, Jamaica, Japan, Kenya, Kuwait, Malaysia, Mexico, Mongolia, Nepal, Netherlands, Nigeria, Norway, Pakistan, Peru, Philippines, Russia, Saudi Arabia, Singapore, South Korea, Spain, Sri Lanka, Sweden, Taiwan, Thailand, Turkey, Ukraine, United Kingdom, Venezuela, Vietnam.



Covid-19 Update:

“Clark University is requiring that all faculty, staff, and students who plan to work, live, or study on campus be fully vaccinated for COVID-19 by July 15. Clark is requiring proof of your vaccination status, which you must upload through our secure portal.”



Prayer Request:

- 1) First and foremost, we are praying Luke 10.2 “*The harvest is plentiful, but the laborers are few; therefore, plead with the Lord of the harvest to send out laborers into His harvest.*” (NASB)
- 2) Pray that this summer God calls people specifically to this school, students, staff and faculty.
- 3) Pray for the student groups. Pray that their summer preparation will go smoothly and that they will be positioned, this fall, to see a harvest.
- 4) Pray for a revival among the Christian students. Pray that the revival will spread to an awakening for the whole campus.
- 5) Pray for the international students. Pray that they will be receptive to the gospel. Pray that they will be Christian Ambassadors to their home country.



College of Our Lady of the Elms Chicopee, MA

President..... Harry E. Dumay
Type..... 4-year, Private Non-Profit
Campus Housing Yes
Student Population 1,495
Student-to-Faculty Ratio 11 to 1
International Students (2019)..... 10 from at least 3 Countries.
Brazil, Japan, Spain.



Prayer Request:

- 1) First and foremost, we are praying Luke 10.2 *“The harvest is plentiful, but the laborers are few; therefore, plead with the Lord of the harvest to send out laborers into His harvest.”* (NASB)
- 2) Pray that this summer God calls people specifically to this school, students, staff and faculty.
- 3) Pray for the student groups. Pray that their summer preparation will go smoothly and that they will be positioned, this fall, to see a harvest.
- 4) Pray for a revival among the Christian students. Pray that the revival will spread to an awakening for the whole campus.
- 5) Pray for the international students. Pray that they will be receptive to the gospel. Pray that they will be Christian Ambassadors to their home country.

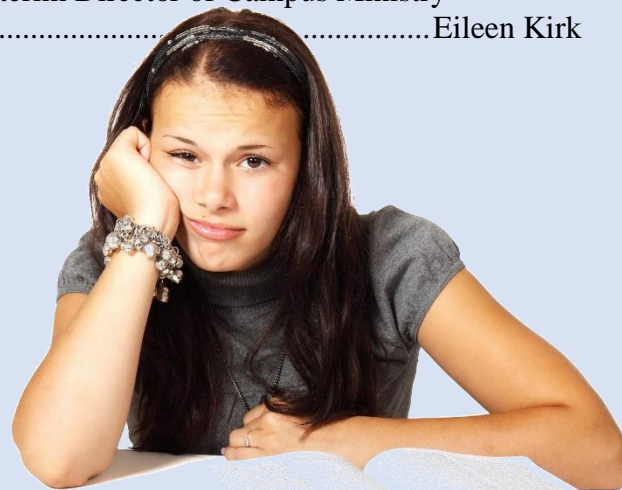


This Campus Has NOT Been Adopted

Known Christian Groups on Campus:

College Chaplain..... Rev. Mark Stelzer
Interim Director of Campus Ministry
..... Eileen Kirk

DAY
14



Covid-19 Update:

“A federally approved COVID-19 vaccine prior to the start of the 2021-2022 academic year will be a prerequisite to participating in in-person classes and campus activities, and to living on campus. If your classes are fully online and do not require you to be on campus, you will be exempt from this requirement. The College will consider exceptions for religious or health exemptions.”



College of the Holy Cross Worcester, MA



This Campus Has NOT Been Adopted

DAY
15

Known Christian Groups on Campus:

President Rev. Philip L. Boroughs
Type 4-year, Private Non-Profit
Campus Housing Yes
Student Population 2,963
Student-to-Faculty Ratio 10 to 1
International Students (2019) 91 from at least 13 Countries.
Brazil, Canada, China, Germany, Greece, Japan, Netherlands, Nigeria,
Norway, Peru, South Korea, Spain, Taiwan.

Director of the Office of the Chaplains

..... Marybeth Kearns-Barrett

Assistant Chaplain of Mission Fr. Jim Hayes

Assistant Chaplain/Director of Retreats

..... Megan Fox-Kelly

Associate Chaplain/Advisor to SPUD

..... Marty Kelly

Assistant Chaplain-Liturgy Fr. Keith Maczkiewicz

Hospitality Coordinator at Campion House

..... Laura Nelson

Assistant Chaplain Andrew A. Omondi

Director of Liturgy and Music Laurence Rosania

Campus Minister/Retreats Director .. JP Manning

Assistant Chaplain of Mission/Director of Domestic Immersion

..... Emily Rauer Davis

Active Bible Study ?

Pax Christi ?

Society of Saints Peter and Paul ?



Prayer Request:

- 1) First and foremost, we are praying Luke 10.2 *"The harvest is plentiful, but the laborers are few; therefore, plead with the Lord of the harvest to send out laborers into His harvest."* (NASB)
- 2) Pray that this summer God calls people specifically to this school, students, staff and faculty.
- 3) Pray for the student groups. Pray that their summer preparation will go smoothly and that they will be positioned, this fall, to see a harvest.
- 4) Pray for a revival among the Christian students. Pray that the revival will spread to an awakening for the whole campus.
- 5) Pray for the international students. Pray that they will be receptive to the gospel. Pray that they will be Christian Ambassadors to their home country.



Covid-19 Update:

"I am happy to announce that we are planning for a return to fully in-person classes and on-campus activities for the fall semester. ... Locally, in Massachusetts and in Worcester, we are seeing transmission rates dropping and easing of restrictions. And while pandemics are never fully predictable, based on current projections, we anticipate that we will not need to socially distance in the fall and therefore will be able to resume our regular in-person classes and activities."

Curry College Milton, MA



This Campus Has NOT Been Adopted

Known Christian Groups on Campus:
No Known Gospel Witness

DAY
16

President Kenneth K. Quigley
Type 4-year, Private Non-Profit
Campus Housing Yes
Student Population 2,519
Student-to-Faculty Ratio 12 to 1
International Students (2019) 45 from at least 18 Countries.
Canada, China, France, Germany, India, Indonesia, Kenya, Mexico,
Nepal, Russia, Saudi Arabia, Spain, Sweden, Taiwan, United Arab Emirates,
United Kingdom, Venezuela, Vietnam.



Prayer Request:

- 1) First and foremost, we are praying Luke 10.2 *“The harvest is plentiful, but the laborers are few; therefore, plead with the Lord of the harvest to send out laborers into His harvest.”* (NASB)
- 2) Pray that this summer God calls people specifically to this school, students, staff and faculty.
- 3) Pray for the student groups. Pray that their summer preparation will go smoothly and that they will be positioned, this fall, to see a harvest.
- 4) Pray for a revival among the Christian students. Pray that the revival will spread to an awakening for the whole campus.
- 5) Pray for the international students. Pray that they will be receptive to the gospel. Pray that they will be Christian Ambassadors to their home country.



Covid-19 Update:

“As we look to the future, we're pleased to share that the College is planning to return to our full on-campus operations for the fall semester, including in-person classes, student activities and support, and athletics. Though we anticipate some safety precautions may remain in place as informed by the then current guidance, we're excited for a traditional 2021-2022 academic year.”



Dean College Franklin, MA



This Campus Has NOT Been Adopted

Known Christian Groups on Campus:
Agape Christian Fellowship ?

DAY
17

President.....Paula M. Rooney
Type4-year, Private Non-Profit
Campus Housing.....Yes
Student Population.....1,320
Student-to-Faculty Ratio.....17 to 1
International Students (2019).....57 from at least 11 Countries.
Bahamas, Canada, China, Hong Kong, Japan, Kenya, Mexico, South
Korea, Sweden, United Kingdom, Vietnam.



Prayer Request:

- 1) First and foremost, we are praying Luke 10.2 *“The harvest is plentiful, but the laborers are few; therefore, plead with the Lord of the harvest to send out laborers into His harvest.”* (NASB)
- 2) Pray that this summer God calls people specifically to this school, students, staff and faculty.
- 3) Pray for the student groups. Pray that their summer preparation will go smoothly and that they will be positioned, this fall, to see a harvest.
- 4) Pray for a revival among the Christian students. Pray that the revival will spread to an awakening for the whole campus.
- 5) Pray for the international students. Pray that they will be receptive to the gospel. Pray that they will be Christian Ambassadors to their home country.



Covid-19 Update:

“The Dean College Mission calls upon us, once again, to reunite our entire community on campus for the Fall 2021 Semester as a residential, teaching and learning community to deliver the holistic collegiate experience that distinguishes our baccalaureate and associate degree preparation. While there are always some academic course offerings available online, there will not be an option for students to be fully virtual. ... We look forward to welcoming our students back for a vibrant in-person living and learning experience with in-person academic course delivery and academic support, over 40 clubs and organizations, evening and weekend social programming, resident and commuter programs, theatre and dance performances, leadership development opportunities, community service, and career readiness events.”



Eastern Nazarene College

Quincy, MA



This Campus Has NOT Been Adopted

DAY
18

Known Christian Groups on Campus:

Spiritual Development Staff:

Dean of the Chapel..... David Young

Assist Dean for Community Life. Keri Lewis

Service and Missions Engagement Coordinator

..... Shelby Robinson

Student Chaplains:

..... Brendan Bollinger

..... Andy Edouard

..... Catelynn Frantz

..... Jenna Nielson

..... Cory Whitley

President Jack Connell
Type 4-year, Private Non-Profit
Campus Housing Yes
Student Population 772
Student-to-Faculty Ratio 10 to 1
International Students (2019) 44 from at least 15 Countries.
Australia, Brazil, Canada, China, Columbia, Germany, India, Jamaica,
Mexico, Nepal, Russia, South Korea, Sri Lanka, United Kingdom,
Venezuela.



Prayer Request:

- 1) First and foremost, we are praying Luke 10.2 *"The harvest is plentiful, but the laborers are few; therefore, plead with the Lord of the harvest to send out laborers into His harvest."* (NASB)
- 2) Pray that this summer God calls people specifically to this school, students, staff and faculty.
- 3) Pray for the student groups. Pray that their summer preparation will go smoothly and that they will be positioned, this fall, to see a harvest.
- 4) Pray for a revival among the Christian students. Pray that the revival will spread to an awakening for the whole campus.
- 5) Pray for the international students. Pray that they will be receptive to the gospel. Pray that they will be Christian Ambassadors to their home country.



Covid-19 Update:

"Beginning in the Fall 2021 Academic Term, all students attending ENC will be expected to be fully vaccinated against COVID-19 by the first day of classes. For students requiring an exemption due to medical or religious reasons, please email healthservices@enc.edu for assistance."



Emerson College Boston, MA



This Campus Has NOT Been Adopted

DAY
19

Known Christian Groups on Campus:

Emerson Christian Fellowship.....Carlee Bronkema
Newman ClubJosephine Finn

Interim President William Gilligan
Type..... 4-year, Private Non-Profit
Campus Housing Yes
Student Population 4,930
Student-to-Faculty Ratio 15 to 1
International Students (2019)..... 570 from at least 40 Countries.

Australia, Bangladesh, Brazil, Canada, China, Colombia, France, Germany, Greece, Hong Kong, India, Indonesia, Iran, Israel, Italy, Japan, Jordan, Kenya, Malaysia, Mexico, Nepal, Netherlands, Nigeria, Pakistan, Peru, Philippines, Russia, Saudi Arabia, Singapore, South Korea, Spain, Sweden, Taiwan, Thailand, Turkey, Ukraine, United Kingdom, Venezuela, Vietnam.

***Other Locations:**

Los Angeles
The Netherlands



Prayer Request:

- 1) First and foremost, we are praying Luke 10.2 *“The harvest is plentiful, but the laborers are few; therefore, plead with the Lord of the harvest to send out laborers into His harvest.”* (NASB)
- 2) Pray that this summer God calls people specifically to this school, students, staff and faculty.
- 3) Pray for the student groups. Pray that their summer preparation will go smoothly and that they will be positioned, this fall, to see a harvest.
- 4) Pray for a revival among the Christian students. Pray that the revival will spread to an awakening for the whole campus.
- 5) Pray for the international students. Pray that they will be receptive to the gospel. Pray that they will be Christian Ambassadors to their home country.



Covid-19 Update:

“Students studying at any of our campuses will be required to be fully vaccinated against COVID-19. Faculty and staff are expected to be fully vaccinated.”



Emmanuel College Boston, MA



This Campus Has NOT Been Adopted

DAY
20

Known Christian Groups on Campus:

Project Manager and Community Service Coordinator
..... Danielle Rose
Chaplain..... Fr. Terrence Devino
Adjunct Campus Minister Sis. Evelyn Ronan

President..... Sis. Janet Eisner
Type 4-year, Private Non-Profit
Campus Housing Yes
Student Population 2,222
Student-to-Faculty Ratio 13 to 1
International Students (2019)..... 30 from at least 17 Countries.

Brazil, China, Germany, Hong Kong, India, Indonesia, Italy, Japan,
Netherlands, Pakistan, Saudi Arabia, South Korea, Spain, Taiwan, Turkey,
Venezuela, Vietnam.



Covid-19 Update:

“As I noted in March, the College is planning for a full resumption of face-to-face classes for the Fall 2021 semester, as well as a full slate of co-curricular activities and events and a return to near-normal capacities in the residence halls. As a critical next step in ensuring the safety and vibrancy of the Emmanuel educational experience, the College today announces that the COVID-19 vaccine will be required for all students enrolled in classes for the 2021-2022 academic year.”

Prayer Request:

- 1) First and foremost, we are praying Luke 10.2 *“The harvest is plentiful, but the laborers are few; therefore, plead with the Lord of the harvest to send out laborers into His harvest.”* (NASB)
- 2) Pray that this summer God calls people specifically to this school, students, staff and faculty.
- 3) Pray for the student groups. Pray that their summer preparation will go smoothly and that they will be positioned, this fall, to see a harvest.
- 4) Pray for a revival among the Christian students. Pray that the revival will spread to an awakening for the whole campus.
- 5) Pray for the international students. Pray that they will be receptive to the gospel. Pray that they will be Christian Ambassadors to their home country.



Endicott College Beverly, MA



This Campus Has NOT Been Adopted

Known Christian Groups on Campus:
Christian Community at Endicott College...?

DAY
21

PresidentSteven R. DiSalvo
Type4-year, Private Non-Profit
Campus Housing.....Yes
Student Population.....4,741
Student-to-Faculty Ratio.....11 to 1

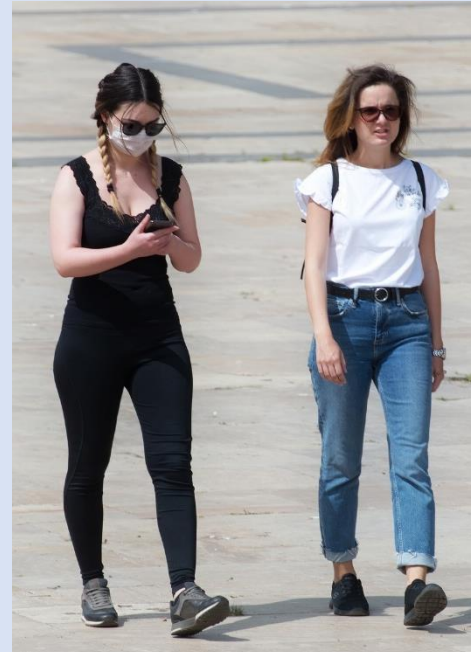
International Students (2019)95 from at least 26 Countries.

Australia, Canada, China, Colombia, France, Germany, Hong Kong, India, Indonesia, Israel, Japan, Mexico, Mongolia, Nepal, Nigeria, Pakistan, Peru, Saudi Arabia, Singapore, South Korea, Spain, Sweden, Taiwan, Turkey, United Kingdom, Venezuela.



Prayer Request:

- 1) First and foremost, we are praying Luke 10.2 *“The harvest is plentiful, but the laborers are few; therefore, plead with the Lord of the harvest to send out laborers into His harvest.”* (NASB)
- 2) Pray that this summer God calls people specifically to this school, students, staff and faculty.
- 3) Pray for the student groups. Pray that their summer preparation will go smoothly and that they will be positioned, this fall, to see a harvest.
- 4) Pray for a revival among the Christian students. Pray that the revival will spread to an awakening for the whole campus.
- 5) Pray for the international students. Pray that they will be receptive to the gospel. Pray that they will be Christian Ambassadors to their home country.



Covid-19 Update:

“Endicott College has announced that it will offer the full range of in-person instruction and on-campus activities for Fall 2021, as the federal government is now predicting that every adult in the U.S. will have access to the COVID-19 vaccine by this summer. The College anticipates that many of the COVID-19 constraints currently in place will likely be relaxed as the pandemic subsides following mass vaccination efforts.”



FINE Mortuary College

Norwood, MA



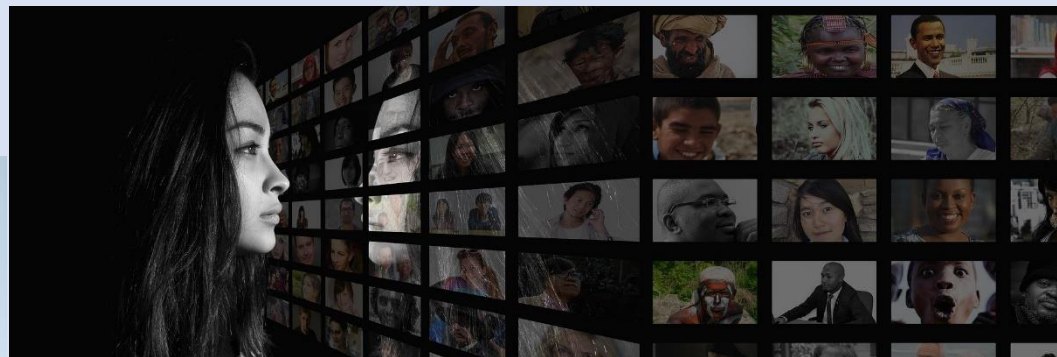
This Campus Has NOT Been Adopted

DAY
22

Known Christian Groups on Campus:

No Known Gospel Witness

President..... Kevin Koch
Type..... 2-year, Private For-Profit
Campus Housing No
Student Population 100
Student-to-Faculty Ratio 9 to 1



Covid-19 Update:

“ATTENTION: Due to the recent outbreak of COVID-19, we have temporarily closed down the campus. The Summer term is 100% online via virtual classroom. Applications for the Fall term are due by July 23rd. We are planning to re-open campus for the Fall term and offer classes virtually as well as on campus.”

Prayer Request:

- 1) First and foremost, we are praying Luke 10.2 *“The harvest is plentiful, but the laborers are few; therefore, plead with the Lord of the harvest to send out laborers into His harvest.”* (NASB)
- 2) Pray that this summer God calls people specifically to this school, students, staff and faculty.
- 3) Pray for the student groups. Pray that their summer preparation will go smoothly and that they will be positioned, this fall, to see a harvest.
- 4) Pray for a revival among the Christian students. Pray that the revival will spread to an awakening for the whole campus.
- 5) Pray for the international students. Pray that they will be receptive to the gospel. Pray that they will be Christian Ambassadors to their home country.



Fisher College Boston, MA



This Campus Has NOT Been Adopted

Known Christian Groups on Campus:

No Known Gospel Witness

DAY
23

President..... Steven Rich
Type..... 4-year, Private Non-Profit
Campus Housing Yes
Student Population 1,628
Student-to-Faculty Ratio 14 to 1
International Students (2019)..... 132 from at least 30 Countries.

Australia, Bangladesh, Brazil, Canada, China, Colombia, France, Germany, Hong Kong, India, Indonesia, Iran, Japan, Jordan, Malaysia, Nepal, Nigeria, Peru, Russia, Saudi Arabia, South Korea, Spain, Sweden, Taiwan, Thailand, Turkey, United Arab Emirates, United Kingdom, Venezuela, Vietnam.

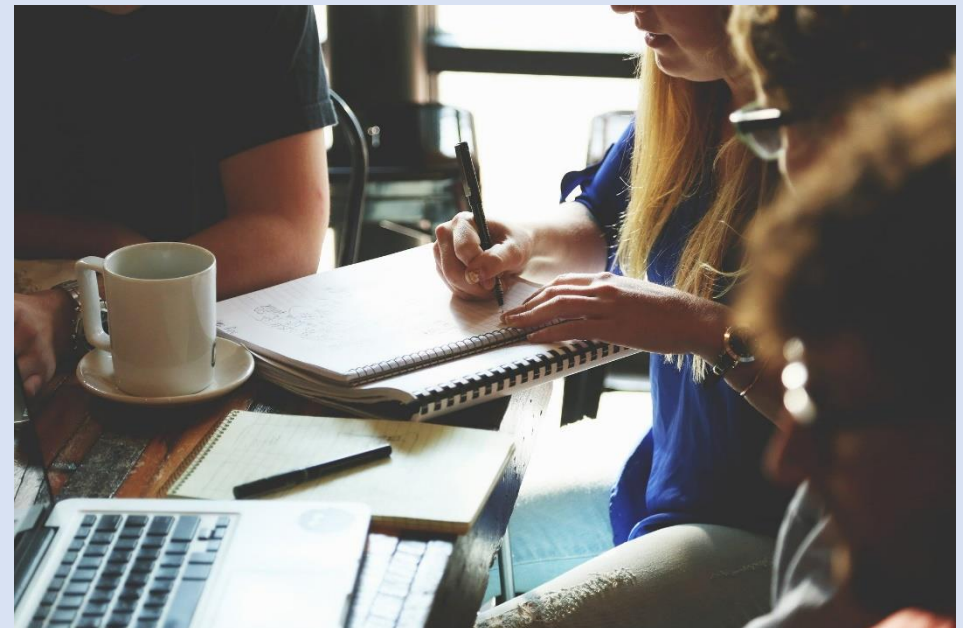


Covid-19 Update:

“Fisher College is pleased to announce plans to have a full return to campus for the Fall 2021 semester while following all mandatory federal, state, and city guidelines and precautions.”

Prayer Request:

- 1) First and foremost, we are praying Luke 10.2 *“The harvest is plentiful, but the laborers are few; therefore, plead with the Lord of the harvest to send out laborers into His harvest.”* (NASB)
- 2) Pray that this summer God calls people specifically to this school, students, staff and faculty.
- 3) Pray for the student groups. Pray that their summer preparation will go smoothly and that they will be positioned, this fall, to see a harvest.
- 4) Pray for a revival among the Christian students. Pray that the revival will spread to an awakening for the whole campus.
- 5) Pray for the international students. Pray that they will be receptive to the gospel. Pray that they will be Christian Ambassadors to their home country.



Fitchburg State University

Fitchburg, MA



This Campus Has NOT Been Adopted

DAY
24

Known Christian Groups on Campus:

Campus Ambassadors Christian Fellowship...Noah Culp

First Love.....Stephanie Amponmaah Boamah

President Richard S. Lapidus
Type 4-year, Public
Campus Housing Yes
Student Population..... 7,251
Student-to-Faculty Ratio 13 to 1
International Students (2019) 81 from at least 18 Countries.

Canada, China, Colombia, Egypt, Germany, Ghana, India, Iran, Italy,
Kenya, Mexico, Nepal, Nigeria, Saudi Arabia, Sweden, Thailand, Turkey,
Vietnam.



Prayer Request:

- 1) First and foremost, we are praying Luke 10.2 *"The harvest is plentiful, but the laborers are few; therefore, plead with the Lord of the harvest to send out laborers into His harvest."* (NASB)
- 2) Pray that this summer God calls people specifically to this school, students, staff and faculty.
- 3) Pray for the student groups. Pray that their summer preparation will go smoothly and that they will be positioned, this fall, to see a harvest.
- 4) Pray for a revival among the Christian students. Pray that the revival will spread to an awakening for the whole campus.
- 5) Pray for the international students. Pray that they will be receptive to the gospel. Pray that they will be Christian Ambassadors to their home country.



Covid-19 Update:

"The Presidents of the nine universities in the system unanimously decided to require undergraduate and graduate students who are attending in-person classes, conducting research on campus, living in residence halls, or participating in campus life activities to become fully inoculated with an approved COVID-19 vaccine prior to the start of the 2021 academic year. The presidents expect that all employees will also be fully vaccinated prior to the start of the fall semester."



Framingham State University

Framingham, MA



This Campus Has NOT Been Adopted

DAY
25

Known Christian Groups on Campus:

Office of Campus Ministry

Catholic Chaplain Kristelle Angelli

Evangelical Chaplain Thomas Cesnut

Christian Fellowship Gabrielle Laurenzano

President F. Javier Cevallos

Type 4-year, Public

Campus Housing Yes

Student Population 5,456

Student-to-Faculty Ratio 13 to 1

International Students (2019) 15 from at least 4 Countries.

Brazil, China, India, Vietnam.



Covid-19 Update:

“The University is aiming for most courses to be held in-person and for residence halls to be filled close to capacity for Fall 2021. The University is also planning for a return to in-person events, activities and campus life, while maintaining safety standards that have allowed FSU to keep its positive COVID-19 test rate far below 1% even during the height of the pandemic.”

Prayer Request:

- 1) First and foremost, we are praying Luke 10.2 *“The harvest is plentiful, but the laborers are few; therefore, plead with the Lord of the harvest to send out laborers into His harvest.”* (NASB)
- 2) Pray that this summer God calls people specifically to this school, students, staff and faculty.
- 3) Pray for the student groups. Pray that their summer preparation will go smoothly and that they will be positioned, this fall, to see a harvest.
- 4) Pray for a revival among the Christian students. Pray that the revival will spread to an awakening for the whole campus.
- 5) Pray for the international students. Pray that they will be receptive to the gospel. Pray that they will be Christian Ambassadors to their home country.



Franklin W Olin College of Engineering Needham, MA



This Campus Has NOT Been Adopted

DAY
26

Known Christian Groups on Campus:

The Babson-Olin Catholic Association...?

The Olin Christian Fellowship ?

President..... Gilda A. Barabino
Type..... 4-year, Private Non-Profit
Campus Housing Yes
Student Population 386
Student-to-Faculty Ratio 8 to 1
International Students (2019)..... 44 from at least 12 Countries.

Canada, China, France, Germany, Greece, India, Mexico, Singapore, South Korea, Sweden, Turkey, Vietnam.



Prayer Request:

- 1) First and foremost, we are praying Luke 10.2 *“The harvest is plentiful, but the laborers are few; therefore, plead with the Lord of the harvest to send out laborers into His harvest.”* (NASB)
- 2) Pray that this summer God calls people specifically to this school, students, staff and faculty.
- 3) Pray for the student groups. Pray that their summer preparation will go smoothly and that they will be positioned, this fall, to see a harvest.
- 4) Pray for a revival among the Christian students. Pray that the revival will spread to an awakening for the whole campus.
- 5) Pray for the international students. Pray that they will be receptive to the gospel. Pray that they will be Christian Ambassadors to their home country.

Covid-19 Update:

“Olin Admission and Financial Aid is pleased to welcome the 92 students of the Class of 2025. While slightly higher than the College’s goal of 86 first year students arriving for Orientation in August, this is a significant cause for celebration after over a year of unusual challenges brought on by the COVID-19 pandemic, including the move to a virtual Candidates’ Week, as well as the first season of test optional admission policies.

...In addition to the U.S., the Class of 2025 will represent five home countries: Japan (2), China, Germany, India and Vietnam. Students hailing from the U.S. will travel to Olin from 25 home states. For the first time in recorded memory, the incoming class will have more students from Massachusetts (19) than from California (18). Other states with the highest representation are NY and TX (7 each), CT and NJ (4 each).”



Gordon College Wenham, MA



This Campus Has NOT Been Adopted

DAY
27

Known Christian Groups on Campus:

“Gordon is a vibrant community of believers, a place where Christian faith frames all aspects of the experience—from residence life to athletics to academics. We want students to think deeply and holistically about how their faith informs their influence in society—now and well into the future. Intentional programming and organic relationships propel students to grow in Christian character and deepen their trust in Jesus.”

President..... Michael Lindsay
Type..... 4-year, Private Non-Profit
Campus Housing Yes
Student Population 1,857
Student-to-Faculty Ratio 11 to 1
International Students (2019)..... 162 from at least 28 Countries.

Bahamas, Brazil, Canada, China, Colombia, Egypt, France, Ghana, Greece, Hong Kong, India, Indonesia, Japan, Kenya, Malaysia, Mexico, Nigeria, Pakistan, Peru, Philippines, Singapore, South Korea, Sri Lanka, Taiwan, Ukraine, United Kingdom, Venezuela, Vietnam.



Prayer Request:

- 1) First and foremost, we are praying Luke 10.2 *“The harvest is plentiful, but the laborers are few; therefore, plead with the Lord of the harvest to send out laborers into His harvest.”* (NASB)
- 2) Pray that this summer God calls people specifically to this school, students, staff and faculty.
- 3) Pray for the student groups. Pray that their summer preparation will go smoothly and that they will be positioned, this fall, to see a harvest.
- 4) Pray for a revival among the Christian students. Pray that the revival will spread to an awakening for the whole campus.
- 5) Pray for the international students. Pray that they will be receptive to the gospel. Pray that they will be Christian Ambassadors to their home country.



Covid-19 Update:

“After a year of successfully navigating COVID-19 with very limited positive cases on campus, Gordon looks forward, with hope and resolve, to restoring near-normal operations for the fall semester (what we’re calling “Phase Four”). Given the current pace of the vaccine roll-out and predictions for herd immunity statewide by the summer, we are planning for the full return of in-person learning and living while maintaining safety measures. As always, we’ll remain agile; with the tools, techniques and technologies we’ve learned over the past year, we will have full capacity to adjust based on unexpected developments, if needed. We look forward to bringing our vibrant, diverse community of believers together in the fall of 2021 for the best that Gordon has to offer.”

Gordon-Conwell Theological Seminary

South Hamilton, MA



This Campus Has NOT Been Adopted

DAY
28

Known Christian Groups on Campus:

“Gordon-Conwell Theological Seminary combines a rich tradition with cutting-edge educational innovation. Rooted in the gospel and God’s Word, the seminary seeks to develop Christian leaders who are thoughtful, globally aware, spiritually mature and ready for a broad array of ministries.”

President.....Scott W. Sunquist
Type4-year, Private Non-Profit
Campus Housing.....Yes
Student Population.....1,660
Student-to-Faculty Ratio.....This Info Not Available
There are approximately 137 [international](#) students at Gordon - Conwell Seminary; they make up 8.1% of all total students.

***Other Locations**

Boston, MA
Charlotte, NC
Jacksonville, FL



Prayer Request:

- 1) First and foremost, we are praying Luke 10.2 “*The harvest is plentiful, but the laborers are few; therefore, plead with the Lord of the harvest to send out laborers into His harvest.*” (NASB)
- 2) Pray that this summer God calls people specifically to this school, students, staff and faculty.
- 3) Pray for the student groups. Pray that their summer preparation will go smoothly and that they will be positioned, this fall, to see a harvest.
- 4) Pray for a revival among the Christian students. Pray that the revival will spread to an awakening for the whole campus.
- 5) Pray for the international students. Pray that they will be receptive to the gospel. Pray that they will be Christian Ambassadors to their home country.



Covid-19 Update:

“Courses taught through Gordon-Conwell are made available through one of three distinct modes: Classroom based, in-person learning with an instructor. Internet-based, remotely guided learning with an instructor. Internet based, live learning with an instructor, from anywhere in the world with a high-speed internet connection.”



Greenfield Community College Greenfield, MA



This Campus Has NOT Been Adopted

Known Christian Groups on Campus:

Ignite Bible Study.....?

DAY
29

President..... Yves Salomon-Fernández
Type..... 2-year, Public
Campus Housing No
Student Population 1,761
Student-to-Faculty Ratio 12 to 1



Covid-19 Update:

“Remote Learning for Summer & Fall 2021”

Prayer Request:

- 1) First and foremost, we are praying Luke 10.2 “*The harvest is plentiful, but the laborers are few; therefore, plead with the Lord of the harvest to send out laborers into His harvest.*” (NASB)
- 2) Pray that this summer God calls people specifically to this school, students, staff and faculty.
- 3) Pray for the student groups. Pray that their summer preparation will go smoothly and that they will be positioned, this fall, to see a harvest.
- 4) Pray for a revival among the Christian students. Pray that the revival will spread to an awakening for the whole campus.
- 5) Pray for the international students. Pray that they will be receptive to the gospel. Pray that they will be Christian Ambassadors to their home country.



Hampshire College Amherst, MA



This Campus Has NOT Been Adopted

Known Christian Groups on Campus:

No Known Gospel Witness

DAY
30

President.....Ed Wingenbach
Type4-year, Private Non-Profit
Campus Housing.....Yes
Student Population.....745
Student-to-Faculty Ratio.....13 to 1
International Students (2019).....73 from at least 21 Countries.
Bangladesh, Canada, China, Colombia, Ecuador, France, Germany,
Ghana, Greece, India, Indonesia, Japan, Malaysia, Nepal, Pakistan, Saudi
Arabia, South Korea, Spain, Taiwan, United Kingdom, Vietnam.



Covid-19 Update:

“Hampshire College requires all students to be fully vaccinated for COVID-19 before arrival for fall semester 2021. “Fully vaccinated” means you should plan to complete one dose of Janssen/Johnson & Johnson or two doses of Pfizer or Moderna vaccines at least two weeks before you arrive on campus. Having a fully vaccinated campus will help create a safe in-person living and learning environment for fall 2021.”

Prayer Request:

- 1) First and foremost, we are praying Luke 10.2 *“The harvest is plentiful, but the laborers are few; therefore, plead with the Lord of the harvest to send out laborers into His harvest.”* (NASB)
- 2) Pray that this summer God calls people specifically to this school, students, staff and faculty.
- 3) Pray for the student groups. Pray that their summer preparation will go smoothly and that they will be positioned, this fall, to see a harvest.
- 4) Pray for a revival among the Christian students. Pray that the revival will spread to an awakening for the whole campus.
- 5) Pray for the international students. Pray that they will be receptive to the gospel. Pray that they will be Christian Ambassadors to their home country.

